

## Product datasheet for **MG217120**

### Kcnh7 (NM\_133207) Mouse Tagged ORF Clone

#### Product data:

Product Type:	Expression Plasmids
Product Name:	Kcnh7 (NM_133207) Mouse Tagged ORF Clone
Tag:	TurboGFP
Symbol:	Kcnh7
Synonyms:	9330137111Rik; erg3; Kv11.3
Mammalian Cell Selection:	Neomycin
Vector:	pCMV6-AC-GFP (PS100010)
E. coli Selection:	Ampicillin (100 ug/mL)
ORF Nucleotide Sequence:	>MG217120 representing NM_133207 Red=Cloning site Blue=ORF Green=Tags(s)

TTTTGTAATACGACTCACTATAGGGCGGCCGGAATTCGTCGACTGGATCCGGTACCGAGGAGATCTGCC  
GCC**CGATCGCC**

ATGCTGTTCGACGGGGCATGTGGCACCGCCAAAACACCTTCCTGGGGACCATCATACGAAAATTTGAAG  
GGCAGAATAAAAAATTTATCATTGCAAATGCCAGAGTGCAGAAGTGTCTATCATCTACTGCAATGATGG  
CTTCTGTGAGATGACGGGTTTCTCCAGGCCAGATGTGATGCAGAAGCCGTGTACCTGTGACTTTCTCCAT  
GGGCTGAGACCAAGAGGCATGATATTGCCAGATTGCCAGGCGCTGCTGGGGTACAGGAGAGGAAAG  
TGGAGGTACCTACTATACAAGAATGGTCCACTTTTATTTGTAACACTCACATAATCCAGTAAAGAA  
CCAAGAGGGTGTGGCTATGATGTTTCATCATTAAATTTGAGTATGTGACAGATGAAGAAAAATGCTGCCACT  
CCAGAGAGGGTCAACCCGATATTACCAGTCAAGACTGTAACCCGAAAACCTTTTTGGGTTCAAATTTCTG  
GACTGAGAGTTCTAACATACAGAAAACAGTCTTGGCCACAGGAAGACCCGGATGTGGTAGTTATTGATTC  
TTCTAAACACAGCGATGACTCTGTGGCCATGAAGCACTTAAAGTCTCCCACGAAAGAAAGTTGCAGTCCC  
TCTGAAGCAGATGATACGAAAGCCTTGATACAGCCTAGCCAGTGTCTCCCTTAGTGAACATATCAGGAC  
CTCTGGACCATTCTCTCCAAAAGACAATGGGACCGCCTCTACCTGACATGCTGCAGTCAAGTCCCA  
ACTAACACACTCCAGGTCAAGGGAGAGCCTCTGTAGCATACGGAGGCATCTTCAGTTCATGATATAGAA  
GGGTTTCAGTGTCCACCCCAAGAACATATTTAGAGATCGACATGCCAGTGAAGACAATGGTCAAATGTCA  
AAGGACCTTTTAAATCATATCAAGTCAAGCCTGCTGGGATCCACATCAGATTCAAACCTCAATAAGTACAG  
CACCATTAACAAGATCCCAACTCACTCTGAATTTCTCAGATGTCAAAACAGAAAAGAAGAATACATCC  
CCTCCTTCTTCAGACAAAATAATTATGACCCAAAGGTTAAAGAAAGGACACACAACGTGACCGAGAAAAG  
TAACCCAGGTTCTTTCTTTGGGAGCAGATGTCTTGCCAGAATAAAGCTGCAGACGCCACGCATCAACAA  
ATTTACAATATTGCACTACAGTCTTTCAAAGCAGTCTGGGATTGGCTTATTTTACTCTTGGTCATTTAT  
ACTGCTATATTCACCCCTACTCTGCAGCATTTCTCCTCAATGACAGAGAGGAACAGAAAAGGCGAGAAT  
GTGGCTATTCTGTAGCCCTTTGAATGTGGTAGACTTGATTGTGGATATTATGTTTATTATAGACATTCT  
AATAAACTTCAGAACACCTATGTAATCAGAATGAAGAAGTGGTAAGTATCCTGCCAAAATAGCAATA



[View online »](#)

CACTACTTCAAAGGCTGGTTCCTGATTGACATGGTTGCAGCCATTCTTTTGACTTGCTGATTTTTGGAT  
CAGGTTCTGATGAGACAACGACACTAATTGGTCTTTTGAAGACTGCACGACTCCTGCGTCTTGTGCGCGT  
AGCCAGGAAACTGGACCGATACTCAGAATATGGTGC GGCTGTTCTAATGCTTTGATGTGCATATTTGCC  
CTGATTGCCACTGGCTGGCTTGCATCTGGTATGCGATTGGGAATGTAGAGAGGCCCTATCTGACTGACA  
AAATTGGATGGTTGGATTCCCTTAGGAACACAAATTGGGAAACGTTACAATGACAGTGACTCGAGTCTGG  
ACCGTCCATTAAGACAAATACGTCACGGCACTTTATTTTACCTTCAGCAGTCTAACCAGTGTAGGATTT  
GGAAATGTGTCTCCTAACACCAATTTCGGAGAAAATCTTTTCCATTTGTGCATGTTGATTGGCTCTCTAA  
TGTATGCCGAGCATTTTTGGGAACGTTTCTGCAATTATTCAAAGACTGACTCAGGAACTGCCAGGTACCA  
CATGCAGATGCTGAGAGTAAAAGAGTTCATTTCGCTTCCACCAAATCCCCAACCCCTTTGAGGCAACGGCTT  
GAGGAGTATTTCCAGCATGCATGGACTTACACTAACGGCATAGACATGAACATGGTCTTAAAGGGATTTT  
CAGAATGTTTACAAGCTGACATTTGCCTGCATCTGAACCAGACTTTGCTACAAAAGTCAAAAGCCTTTTCG  
AGGAGCAAGTAAAGGCTGTCTTAGAGCTCTGGCAATGAAGTTCAAAACCACCCATGCCCTCCAGGAGAC  
ACCCTGGTTCACTGTGGGATGTTCTAACTGCACTGTACTTCTTATCCAGAGGCTCCATTGAAATCTCTCA  
AGGATGATATAGTGGTAGCTATTCTTGGAAAAATGATATCTTTGGGAAATGGTTCATCTTTATGCCAA  
ACCTGGCAAGTCTAATGCAGATGTGAGAGCACTTACGACTGTGACCTGCATAAGATTACGCGAGAAGAT  
TTATTAGAGTCTTGATATGTATCCAGAAATTTCTGATCACTTCTGACAAATCTAGAAGTGCATTTCA  
ACCTGAGACATGAAAGTGCCAAAGTCCCAATCTGTAATGATTCTGAAGGAGACACCGGTAACCTCGGAG  
AAGGCGATTGTCCTTTGAAAGTGAAGGGGAAAAAGATTTTAGCAAAGAAAACAGTGCAAATGACGCTGAC  
GACTCTACAGATAACAATAAGGCGTTACCAGAGTCCAAGAAGCACTTCGAAGAGAGGAAAAGCAGATCGT  
CATCGTTCATCTCCTCCATTGATGATGAGCAAAAAGCCACTCTTCTTAGGAAACAGTAGATTCTACTCCAAG  
AATGGTGAAGCAACCAGACTCCATGGTGAAGAAAACAATGCCACACTCAGGAAGAATTACACAGAAAAA  
AGGAGTCACTCCTGCAGAGATATCACTGATACACACAGCTGGGAAAGAGAGCCTGCCCGGGCTCAACCTG  
AAGAATGTAGTCCCTCAGGACTTCAGAGAGCTGCCTGGGGCGTCTCTGAGACGGAAGCGACCTCACCTA  
TGGGGAAGTGGAGCAAAGATTAGATTTACTTCAAGAGCAACTTAACAGACTTGAATCCCAAATGACAACG  
GACATCCAGGCCATCTTGACAGCTCCTGCAGAAAACAACCACGGTAGTCCCTCCAGCCTACAGCATGGTGA  
CTGCAGGAGCAGAGTACCAGAGGCCATCCTCCGTCTGTTGAGAACCAGTCAACCCAGAGCATCCATTAA  
GACTGACCGGAGTTTCAGCCCCTCCTCACAGTGTCTGAATTTCTCGACCTCGAAAAATCCAAACTCCAA  
TCCAAAGAGTCACTCTCAAGCGGAAGGGCGCTGAACACAGCTTCCGAAGACAACCTGACTTCCCTTTTAA  
AACAAAGACAGTGTGCGTCATCAGAGCTTGACCCTCGGCAAAGGAAAACCTACCTTCATCCCATCCGGCA  
TCCCTCTCTGCCAGACTCCTCCCTAAGCACTGTAGGGATCTTGGGTCTCCATAGGCATGTCTCTGACCC  
GGTCTTCCAGGAAG

ACGCGTACGCGGCCGCTCGAG - GFP Tag - GTTTAA

Protein Sequence: >MG217120 representing NM\_133207  
 Red=Cloning site Green=Tags(s)

MPVRRGHVAPQNTFLGTIIRKFEQNKFFIIANARVQNCAIYCNDGFCENTGFSRPDVMQKPCDFLH  
 GPETKRHDIAQIAQALLGSEERKVEVYHKNSTFICNTHIIPVKNQEGVAMMFIINFEYVTDEENAAAT  
 PERVNPILPVKTVNRKLFGFKFPLRVLTYRKQSLPQEDPDVVVIDSSKHSDDSVAMKHKFSPTKESCSP  
 SEADDTKALIQPSQCSPLVNIISGPLDHSSPKRQWDRLYPDMLQSSSQLTHSRRESLCSIRRASSVHDIE  
 GFSVHPKNI FRDRHASEDN GRNVKGPFNHKSLLGSTSDSNL NKYSTINKIPQLTLNFSVKTEKKNST  
 PPSSDKTIIAPKVKERTHNVTEKVTVQLSLGADVLP EYKLTQPRINKFTILHYS PFKAVWDWILLLVIIY  
 TAIFTPYSA AFLNDREEQKRRECGYSCSPLNVVDLIVDIMFIIDILINFRTTYVNQNEEVVSDPAKIAI  
 HYFKGWF LIDMVA AIPFDLLIFGSGSDETTTLIGLLKTARLLRLVRVARKLD RYSEYGA AVLMLLMCIFA  
 LIAHWLACIWYAIGNVERPYLTDKIGWLDLGTQIGKRYNDS DSSSGPSIKDKYVTALYFTFSSLTSVGF  
 GNVSPNTNSEKIF SICVMLIGSLMYASIFGNVSAIQRLYSGTARYHMQLRVKEFIRFHQIPNPLRQRL  
 EEFYQHAWTYTNGIDMNMVLKGFPECLQADICLHLNQTLLQNCKAFRGASKGCLRALAMKFKTTHAPPGD  
 TLVHCGDVL TALYFLSRGSIEILKDDIVVAILGKNDIFGEMVHL YAKPGKSNADVRALTYCDLHKIQRED  
 LLEVLDMPYEFSDHFLT NLELTFNL RHESAKSQSVNDSEGDTGKLRRRRLSFESEGEKDFSKENSANDAD  
 DSTDTIRRYQSSKHFEEKSRSSSFISSIDDEQKPLFLGTVDSTPRMVKATRLHGEETMPHSGRIHTEK  
 RSHSCRDITDTHSWEREPARAQPEECSPSGLQRAAWGVSETESDLTYGEVEQRLDLLQEQLNRLESQMTT  
 DIQAILQLLQKQTTVVPAYSMVTAGAEYQRPI LRLRLTSHPRASIKTDRSFPSSQCPEFLDLEKSKLQ  
 SKESLSSGRRLNTASEDNL TSLLKQSDASSELDPRQRKTYLHP IRHPSLPDSSLSTVGILGLHRHVS DP  
 GLPGK

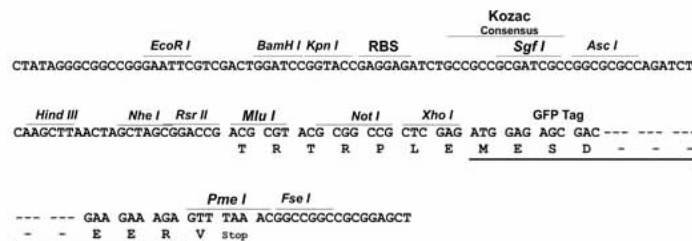
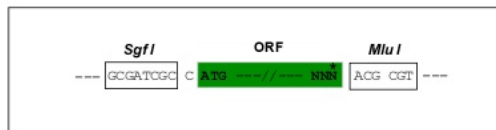
TRTRPLE - GFP Tag - V

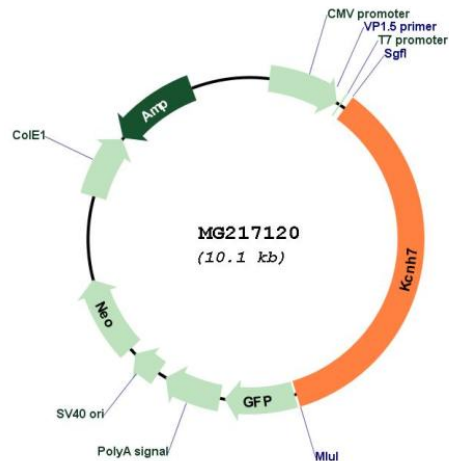
Restriction Sites:

Sgfl-MluI

Cloning Scheme:

Cloning sites used for ORF Shuttling:



**Plasmid Map:**


**ACCN:** NM\_133207

**ORF Size:** 3585 bp

**OTI Disclaimer:** The molecular sequence of this clone aligns with the gene accession number as a point of reference only. However, individual transcript sequences of the same gene can differ through naturally occurring variations (e.g. polymorphisms), each with its own valid existence. This clone is substantially in agreement with the reference, but a complete review of all prevailing variants is recommended prior to use. [More info](#)

**OTI Annotation:** This clone was engineered to express the complete ORF with an expression tag. Expression varies depending on the nature of the gene.

**Components:** The ORF clone is ion-exchange column purified and shipped in a 2D barcoded Matrix tube containing 10ug of transfection-ready, dried plasmid DNA (reconstitute with 100 ul of water).

**Reconstitution Method:**

1. Centrifuge at 5,000xg for 5min.
2. Carefully open the tube and add 100ul of sterile water to dissolve the DNA.
3. Close the tube and incubate for 10 minutes at room temperature.
4. Briefly vortex the tube and then do a quick spin (less than 5000xg) to concentrate the liquid at the bottom.
5. Store the suspended plasmid at -20°C. The DNA is stable for at least one year from date of shipping when stored at -20°C.

**RefSeq:** [NM\\_133207.2](#), [NP\\_573470.2](#)

**RefSeq Size:** 3798 bp

**RefSeq ORF:** 3588 bp

**Locus ID:** 170738

**UniProt ID:** [Q9ER47](#)

**Cytogenetics:** 2 C1.3

**Gene Summary:**

Pore-forming (alpha) subunit of voltage-gated potassium channel (By similarity). Channel properties may be modulated by cAMP and subunit assembly.[UniProtKB/Swiss-Prot Function]