

Product datasheet for **MG217110**

Lrrc8e (NM_028175) Mouse Tagged ORF Clone

Product data:

Product Type:	Expression Plasmids
Tag:	TurboGFP
Symbol:	Lrrc8e
Synonyms:	1810049O03Rik; C87354
Mammalian Cell Selection:	Neomycin
Vector:	pCMV6-AC-GFP (PS100010)
E. coli Selection:	Ampicillin (100 ug/mL)



[View online »](#)

ORF Nucleotide Sequence: >MG217110 representing NM_028175
Red=Cloning site Blue=ORF Green=Tags(s)

TTTTGTAATACGACTCACTATAGGGCGCCGGGAATTCGTGACTGGATCCGGTACCGAGGAGATCTGCC
GCCGCGATCGCC

ATGATCCCAGTGGCGGAGTTCAAGCAGTTCACAGAGCAGCAGCCTGCATTCAAGGTGCTCAAACCTGGT
GGGATGTTCTGGCTGAGTACCTCACCATGGCTATGCTCATGATCGGGGATTTCGGGTGCACCCTCCAGGT
GACACAGGACAAGATCATCTGCTTGCCTAGCCACGAATCTCGTGAGAACATATCGGGGGCTCCATGCCAG
CAGCTTTTGCCTCAAGGAATCTCTGAGCAGATGGGGGTCTCCGAGAGCTCAGTGGCCTCAAAAACAACC
TAGACCTCCAGCAGTATAGCTTTATCAACCAGCTCTGCTATGAGACTGCCCTCCACTGGTATGCCAAATA
CTTCCCCTACTTGGTGGTTATCCATACTCTCATCTTTATGGTCTGTACCAGCTTTTGGTTCAAATCCCT
GGTACCAGCTCAAAAATAGAACACTTCATCTCCATCCTGGGCAAGTGCTTTGATTCTCCATGGACCACTC
GGGCCTTGTCCGAGGTGTCTGGAGAAAATCACAAGGGCCAGCTTCTGGACGGCCATGGTGACCACGGT
AACCACCACAGGGCAGGGTCGGGGAAGTGGGTGAAGGTGAGAAGGAGAAAGTGTCTATTGAGCCCGAA
AAGGTGGTGTCTGAGCCTCCAGTTGTTACTCTGCTGGATAAGAAGGAGGGCGAGCAAGCGAAGGCCCTAT
TCGAGAAGGTCAAAAAGTTCAGAGTGCACGTGGAAGAGGGTGACATCCTCTATTCCATGTACATCCGGCA
GACAGTGTCAAAGTGTGAAGTTTTTGGCCATCCTGGTTTACAACCTGATCTATGTGGAGAAGATCAGC
TTTCTGGTGGCCTGTAGGGTGGAGACATCAGAGATCACGGGGTATGCCAGTTTCTGCTGCAACCACCA
AGGCCACCTCTTTTCTAAGCTGGCCTTCTGCTATATTTCTTTGTGTGTCTATGGCATCACCTGCCT
GTATACACTCTACTGGCTCTTCCATAGGCCCTAAAAGAGTACTCCTTCCGTTCTGTGCGTGAGGAGACA
GGGATGAACGATATCCCGGATGTTAAGAATGACTTTGCCTTATGCTCCACCTATTGACCAGTACGACT
CCCTCTATTCCAACGCTTTGCAGTCTTCTCTCTGAAGTCAAGTCAAGTCAAGTCAAGTCAAGTCAAGT
CAACCATGAGTGGACACCTGAGAAGCTGAGGCAGAAGCTGCAGCGTAACATGCGTGGCCGGCTGGAGCTG
AGCCTCTGCATGCTCCCTGGACTACCTGACACCGTCTTTGAGCTCAGCGAGGTGGAGGCACTCAGGCTGG
AGGCCATCTGTGACATCTCTTTCCCTGGGCTCTCCAGCTTGTGAACCTTCAGGAGCTCAGCTTGTCT
TCACTACCAGCCAGCTGCCCTTTTTCATCACAGATCTTCTGCGAGATCGCTGAAGGTGATCTGTGTT
AAATTCGAGGAGCTCCGAGAGGTACCCCTCTGGGTGTTTGGGCTTCGAGGCTTAGAAGAAGTGCACCTGG
AAGGACTCTTTCCCCAGAAAATGGCTCGGGGTGCCACCTGGAGAGCTCCGGGAGCTTAAACAGCTCAA
GGTACTGTCTCTACGTAGCAATGCAGGGAAGTGCCAGCCAGTGTGACTGATGTGCCGGGCACCTTCAG
CGACTCAGCTGCACAATGATGGGGCTCGTTTGTGCTTGCCTAACAGCCTCAAGAAGCTGGCAGTGTAC
GGGAGCTGGAGCTGGTGGCCTGTGGCTGGAACGTATCCCCATGCAATCTTCAGCCTGGGGGCTCTGCA
GAACTTGACCTTAAGGACAACCACCTTCGGTCTATCGAGGAGATCCTCAGCTTCCAGCACTGTCCGGAAG
CTGGTCACTCTCAGGCTGTGGCACAACCAGATTGCCTATGTGCCGAGCATGTGAGAAAGCTCCGGAGCC
TGGAGCAGCTCTACCTCAGTCAACAAGCTGGAGACTTGCCACCCAGCTGGGCCAGTGTCTTTGGCCT
CCGCTGTGGATTATCCCAACAACGGGCTTCGTTCCCTGCCACCTGAGTTGGGCTTCTCCAGAGCCTC
CAGCATCTAGCCCTCTCTACAACGCACTCGAGAGTCTGCCGATGAATTGTTCTTCTGCCACAAGCTGC
GGACGTTACTCTTGGGCTACGACCACCTAACTCAGCTCTCACCTGACGTGGCTGCCCTCCAGGCCCTCAG
CCGCTGGGGCTCAAGGTAACAGGTTGGAGACTGCCAGAAGAAGTGGTACTGCAAGGGGCTGAAG
AAGTCGGGGCTGTGGCGGAGGACCCCTTATGAGGACTGCCTGCAGAAGTTCGGGAAAAGATGGAGG
AGGAA

ACGCGTACGCGGCCGCTCGAG - GFP Tag - GTTTAA

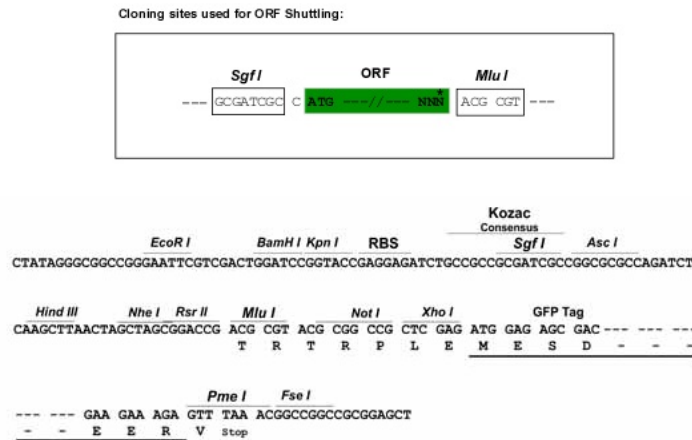
Protein Sequence: >MG217110 representing NM_028175
 Red=Cloning site Green=Tags(s)

MIPVAEFKQFTEQQPAPFKVLKPWVDVLAEYLTAMLMIGVFGCTLQVTQDKIICLPSHESRENISGAPCQ
 QLLPQGISEQMGGREL SGLKNNLDLQQYSFINQLCYETALHWYAKYFPYL VVIHTLIFMVCTSFWFKFP
 GTSSKIEHFISILGKCFDSPWTTTRALSEVSGENHKGPASGRAMVTTVTTTGAGSGKVGEKEKVLIEPE
 KVVSEPPVVTLDDKKEGEQAKALFEKVKKFRVHVEEGDILYSMYIRQTVLKVCKFFAILVYNLIYVEKIS
 FLVACRVETSEITGYASFCCNHTKAHLFSKLAFICYISFVVCYVYGITCLYTLYWL FHRPLKEYSFRS VREET
 GMNDIPDVKNDFAFMLHLIDQYDSL YSKRFAVFLSEVSESRLKQLNLNHEWTP EKL RQKLQRNMRGREL
 SLCMLPGLPDTVFELSEVEALRLEAICDISFP PGLSQLVNLQELSL LHSPARLPFS SQIFLRDR LKVICV
 KFEELREVP LWFGLRGLLEELHLEGLFPPEMARGATLESLRELKQLKVL SLRSNAGKVPASVTDVAGHLQ
 RLSLHNDGARLLALNSLKKLAVLRELELVACGLERIPHAIFSLGALQELDLKDNHLRSIEEILSFQHC RK
 LVTLRLWHNQIAYVPEHVRKLSLEQLYL SHNKLETLPTQLGQCFGLRLDL SHNGLRSLPELGLLQSL
 QHLALSYNAL ESLPDELFFCHKLR TLLGYDHL TQLSPDVAALQAL SRLGLKGNRLETLP EELGDCKGLK
 KSGLLAEDTLYEGLPAEVREKMEEE

TRTRPLE - GFP Tag - V

Restriction Sites: SgfI-MluI

Cloning Scheme:



ACCN: NM_028175

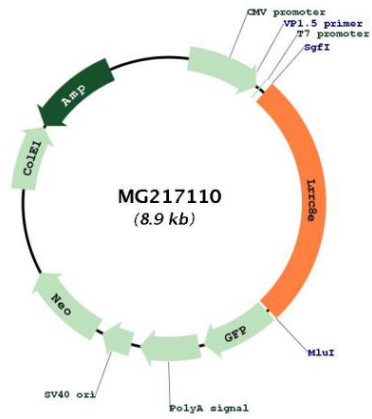
ORF Size: 2385 bp

OTI Disclaimer: The molecular sequence of this clone aligns with the gene accession number as a point of reference only. However, individual transcript sequences of the same gene can differ through naturally occurring variations (e.g. polymorphisms), each with its own valid existence. This clone is substantially in agreement with the reference, but a complete review of all prevailing variants is recommended prior to use. [More info](#)

OTI Annotation: This clone was engineered to express the complete ORF with an expression tag. Expression varies depending on the nature of the gene.

Components:	The ORF clone is ion-exchange column purified and shipped in a 2D barcoded Matrix tube containing 10ug of transfection-ready, dried plasmid DNA (reconstitute with 100 ul of water).
Reconstitution Method:	<ol style="list-style-type: none">1. Centrifuge at 5,000xg for 5min.2. Carefully open the tube and add 100ul of sterile water to dissolve the DNA.3. Close the tube and incubate for 10 minutes at room temperature.4. Briefly vortex the tube and then do a quick spin (less than 5000xg) to concentrate the liquid at the bottom.5. Store the suspended plasmid at -20°C. The DNA is stable for at least one year from date of shipping when stored at -20°C.
Note:	Plasmids are not sterile. For experiments where strict sterility is required, filtration with 0.22um filter is required.
RefSeq:	NM_028175.1
RefSeq Size:	3878 bp
RefSeq ORF:	2388 bp
Locus ID:	72267
UniProt ID:	Q66JT1
Cytogenetics:	8 A1.1
Gene Summary:	Non-essential component of the volume-regulated anion channel (VRAC, also named VSOAC channel), an anion channel required to maintain a constant cell volume in response to extracellular or intracellular osmotic changes. The VRAC channel conducts iodide better than chloride and can also conduct organic osmolytes like taurine. Mediates efflux of amino acids, such as aspartate, in response to osmotic stress. Channel activity requires LRRC8A plus at least one other family member (LRRC8B, LRRC8C, LRRC8D or LRRC8E); channel characteristics depend on the precise subunit composition.[UniProtKB/Swiss-Prot Function]

Product images:



Circular map for MG217110