

## Product datasheet for **MG217080**

### Kcp (NM\_001029985) Mouse Tagged ORF Clone

#### Product data:

Product Type:	Expression Plasmids
Tag:	TurboGFP
Symbol:	Kcp
Synonyms:	AW060220; CRIM-2; Crim2; Gm793; KCP-1
Mammalian Cell Selection:	Neomycin
Vector:	pCMV6-AC-GFP (PS100010)
E. coli Selection:	Ampicillin (100 ug/mL)

**ORF Nucleotide Sequence:** >MG217080 representing NM\_001029985  
Red=Cloning site Blue=ORF Green=Tags(s)

TTTTGTAATACGACTCACTATAGGGCGCCGGGAATTCGTCGACTGGATCCGGTACCGAGGAGATCTGCC  
GCCGCGATCGCC

ATGGCGGGGCTCGGGCGCGTTGCTACCACTGCTCCTGCACCTCGGGAGCCTGGCGCTGGCCGCGCGGG  
GTGGAGAGGCTCCAGAGAGCAGCCTAGGCTTGCTGATGCTATCTCTCAGCAGCAGGCACCCCTCCCACTC  
CTTGGTCCCTGGTGGAGACCCACCAACAGCAGTGGTGCCCTGGAGGAGAGGCTGGAACGGCTGGAGGCA  
GAGGTGACTGACCTCAGAAAGCAGAACAGGGAGCTGCAAGCCAGGGTGGTGCAGCTGGAGTCTGTGAGT  
GCTGGGGGCCAGGTCACACCTGTCCCGAAGGAGCTCGCTGGGAGCCTGATGCCTGCACAGCCTGCGTGTG  
CCGTGATGGAACGGCGCACTGTGGCCCCAGCCCAACCTGCCCACTGCCGTGGCTGCAGCCACAATGGG  
CAGTCTTATGGTCATGGGAGACCTTCTCCCCAGATGCCTGTACCACCTGCCGCTGTCTGGCAGGAACCG  
TGCAGTGCCAGGGCCTTCATGCTCTGAGCTTAACTGTCTGGAGAGCTTATCCCTCCTGGAGAATGTTG  
CCCCATCTGCCGGCCAGGCTGTGAATATGAAGGGCAGCTTACCAGGAAGGGTCTAGTTTCTGTCCAGT  
TCCAACCCATGCCTCCAGTGTCTTGCCTGAGGAGCCTGGTTTCGATGTGTGCCTGTGAAGTCCAGCCAA  
GCCCCGTGCCTCAATCCAGTCCCAGGCTTGGACACTGCTGCCAGTCTGCCAAGCCTCAGGCTGCACAGA  
AGGGAACCTCATAGGGACCATGGCCAAGAGTGGACCACTCCTGGAGACCCCTGCCGATCTGCCAGTGC  
CTGGAGGGCCACATCCAGTGCCGCCAGCGGGAGTGTGCCAGCCTGTGCCATACCCTGCCAGGCCCTTCC  
CGGGCACCTGTTGCCCGGTGTGTGACGGCTGTTTCTAAATGGGCGGGAGCACAGCAGTGGGAGGCCGT  
GGGCTCCCAGGACCCCTGCTCTAGCTGCCGCTGTACCAATGGGAGTGTCCAGTGTGAGCCTCTGCCCTGC  
CCGCTGCACCCTGCAGATACCCGGGCAGGATCCCTGGGCAGTGTGCCCTGTCTGTGATGGCTGTAAT  
ACCAGGGACATGAATATCGGAGCCAGGAGACCTTACCCTCCAAGAGAATGGCCGCTGCCTTCGGTGCCT  
CTGCCAGGCTGGTGAAGTATCCTGTGAAGAACAGGACTGCCAGTCACTCCCTGTGTCCGCTCTGCCTCC  
GGCCCCAGCTCTGCTCCGCTGTGTGCTCAATGGTGGAGGAGTTTGTGAGGGGATCCAGTGGGAGCCAG  
ATGACCAGCCCTGACTTCTGTTCTGCCAAGATGGAGTGCCTGTGTGCAGGGCTGTGCTTGTCTCTCC  
AGTACCCTGCCAACATCCTACCCAGCCACCTGGTGCCTGCTGCCAGTGTGATAGCTGCACCTACCAC  
AGCCTGGTGTATGCTAATGGGCAGAACTTACAGATGTGGACAGCCCTTGCAGACCTGCTACTGCGAGG



ATGGGACTGTGAGGTGTTCAATTGATCAACTGTCCTTTACAACTGTGCCAAGCCCCAGAATGGACCAGG  
CCAGTGCTGCCCTAAGTGCCAGACTGCATCTTGGAGGCACAGGTGTTGTAGATGGGGAGCGCTTCCCT  
CATCCAAGAGACCCCTGCCAGGAGTGTGGTGTGAGGAAGGCCAAGCTCACTGCCAGCTCCGTGCCCTGG  
CCAGCCGCCCTGTGTTACCCTCTGCCAGGCACCTGCTGCAAGAATGACTGCACAGGCTGTGCCTTTGG  
CGGAAAGAGTACCCCAATGGAGCGGACTTCCACATCCCACTGATCCGTGTGCCTGTGTGCTGTCTG  
AGCGGCAACGTACAGTGCCTGGCGCGTGTGTCCGCCACTGTCCTGTCCGAGCCAGTCTCACTCCGG  
GAGACTGCTGCCCCAGTGCCAGATGCCCTGTGACTGCCACAGTCAAGGAATATGGTCCCTGTCCG  
CCACCAGGAGCACTTTTCCAACCGGGAGACCCTTGACGCCGTGCCTCTGCCTGGATGGCTCAGTGTCC  
TGCCAGCGGCTGACCTGCCCTCTGCGCCCTGCGCCACCCACGCCGGGAGCCCTGTTGCCCTCTTGGC  
ACGGCTGCCTGTATCAGGGGAAGGAGTTTGCAGTGGGGAGCGTTTTCCATCACAAACGTTGCGTGCCA  
CGTGTGCCTCTGCTGGGAGGGCAGCGTCAAGTGCAGGCCAGGACTTGTGCCCTGCACAGTGCCTTTT  
CCCAGGGGAAGACTGCTGCCCTGCCTGTGATAGCTGTGATTATCTTGGGTCTCCTATCTGAGCAGCC  
AGGAGTTCCAGACCCCGGGAAGCCTGCAACCTATGCACCTGCCTTGGAGGCTTCTGACTTGCACCCG  
CCGGCCCTGTGAGCCTCCAGCCTGCAGCCATCCACTCATCGTACCCGAGCACTGCTGTCCAACCTGCCAG  
GGATGCCTGTACCATGGATCACTGCTGCCCTGGAGAGACCCTTCTGACCCCTTGACCCACCTGCT  
CCCTCTGCACCTGTGAGGAAGTTCTATGCGCTGCCAAAAGAAGCCATGCCCTCCGGCTCCCTGCCTCA  
CCCGTCTCCAGGCCCTGCTTCTGCCCTGTTTGTGCGAGCTGCCTCTCTCAGGGCCGGGAGCACCAAGAT  
GGGGAGGAGTTGAGGGACCCGAGGGCAGCTGTGAGCGCTGCCGCTGTCTGGCCGGCCAGGTGAGTGC  
CAGAGCTTCACTGCCCCGCTCCCTGCCCTGCTGCACAGGTACAGAACCCAGGGACCTGCTGTCCCTGAT  
CACAGGCTGCCTCGCTCGTGGGAGGAGCATCCTGAAGGGAGTAGCTGGGTGCCAGCGGACAGCCCTGT  
TCTCTGCACTGTGTACAAGGGCATCATCACTTGTGCCAAGTCCAGTGTGTGAGCGCCTGCATCTGGC  
CCCAGGAGGGGCCAGGACTGCTGTCTCAGTGTCTGGCTGTGAGCATGGGGGCAGGAAGTATGAGCC  
TGGGGAGAGCTTCCAGCCTGGGGCAGACCCGTGTAAGTGTGCATCTGCAAGCAGAAGCGTGAAGGGCT  
CCCAGCCTTCACTGTAGTCGGCGGAGTGCACCCAGCCTGGTGGGCTGCCACCAAGCCAGCTTCTTCTC  
CTGGCCCCAGCACTGTGTCCACCTGTGCCAGGCACTGAGTAAGTGCACAGAGGACCTGGTGGGGTCT  
TGAGCTGGTGCCACAGACCCCTGTACACCTGTGAGTGTGAGGATCTGACGTGGCTGTGTACTACCCGG  
GCCTGTCTGAGCTCAGCTGTCCCTGTGGGAGCGTACACAACCCCTGGCAGCTGTGCCCGTGTGTA  
AAGACCTACCCAGTATGCATGCATCAGGGTCTGCTGGGTGGCCTCTGGAGAACAGTGGGCAGTGGATGC  
CTGACCCAGCTGCTCCTGTGTGGCTGGTACTGTGCACTGCCAGACCCAGCGCTGCAGGAAGCTCGCATGT  
AGCCGGGATGAGGTCCCTGCCCTGAGTCCCGGAGCTGCTGTCTCCGCTGTTTGGCCGGCCGGCTTCT  
GCATGGCCTTCGGAGACCCCAATTACCGCACCTTCGATGGCCGCTGTTGCACTTCCAAGGCAGCTGCAG  
CTACGTGCTGGCCAAGGACTGCCACGGCGAGGACTTCAAGTGTGACCGTGAATAATGATGACCGGGCCGG  
AGGGGTGTGGCCTGGACCAAGAGGTAGCAGTGTGTTGGAAACCGTGGCTGTGAGGCTGTGCAGGGCA  
GGACAGTCAATGGTGGACAGCACACAGTACCTTGCCCTTCTCCGGGAGCCACTGCTGTACATTGAGCT  
TCGTGGTCACTGTGATCCTGCATGCCAGCCTGGGCTTCAAGTGTGTTGGGACGGCAATCCCAGGTG  
GAGGTGAGAGTCCAGCTCCTACCGGGCCAGACTTGTGGTCTCTGTGGGAACCTCAATGGCTTTGCC  
AGGATGATCTGAGGGTCCGGATGGGAGGCTCCTGCCACAGAGGCTTCGTTTGGGAACAGCTGGAAGGT  
CCCCAAGGGGCTGGGCTGGCCGGCGTGTCTGCAGGCCAGAGGTGGACCCGTGCCGGGAGCAGGC  
TACCGTGCCAGGCTGAGGCCAATGCCCGTGCGGATCCTGAAGACTTACCGTTCAGTCAATGCCATG  
CTGTGGTGGCCCGGAACCTTCTTTGCTGCCTGTGTGACGACTTGTGTGCTTGTGGTCCAGGCTCCTC  
CTCTGACACCTGTCTGTGATGCCCTGAAGCCTACGCTAGCCACTGTGCCAGGCAGGGGTGACTCCT  
GTCTGGAGGGGCTTCACTCTGTGTGGTGGGCTGCCCTGTGGACCGTGGCTTGTGTGTTGATGAGTGTG  
GACCACCTTGTCCCGTACCTGTTTCAACCGGCACATACCCCTAGGGGAAGTGGCAGCCACTGTGTGAG  
ACCCGTGTTCCAGGCTGCCAGTGTCTGCAAGGCTGGTGAACATGAAGGCCATTGCATCTCACCTGAG  
GTCTGCCACCAAGTCTGCTTACTGGCGAC

ACCGGTACGGGCGGCTCGAG - GFP Tag - GTTTAA

**Protein Sequence:**

>MG217080 representing NM\_001029985  
 Red=Cloning site Green=Tags(s)

MAGARAALLPLLLHLGSLALAARGGEVSREQPRLADAISSQQAPSHSLVPGETHQQQWCPLEERLERLEA  
 EVTDLRKQNLRELQARVVQLESCECWGPGHTCPEGARWEPDACTACVCRDGTACGPGQPNLPHCRGCSHNG  
 QSYGHGETFSPDACTTCRCLAGTVQCQGPSCSELNCLSEFIPPGECCPICRPGCEYEGQLHQEGSSFLSS  
 SNPCLQCSCLRSLVRCVPVKCQPPSCLNPVPRLGHCPCVQASGCTEGNSHRDHQEWTTTPGDPCRICQC  
 LEGHIQCRQRECALCPYPARPLPGTCCPVCDGCFLNGREHSSGEPVGSQDPCSSCRCTNGSVQCEPLPC  
 PPAPCRYPGRIPGQCCPVCDGCKYQGHEYSQETFTLQENGRCLRCVCQAGEVSCCEEQDCPVTPCVRAS  
 GPQLCSACVLNGEEFAEAGIQWEPDDQPTSCSCQDGPVPCRAVLCSPVPCQHPTQPPGACPCSDSCTYH  
 SLVYANGQNF TDVDSPCQTCYCEDGTVRCSLINCPFTTCAKPQNGPGQCCPKPCDILEAQVFVDGERFP  
 HPRDPQCEWCQEGQAHCQLRACPSAPCVHPLPGTCCKNDCTGCAFGGKEYPNGADFPHPTDPCRCLCRCL  
 SGNVQCLARRCPPLSCPQPVLPDGDCCPQCPDAPADCPQSGNMVVRHQEHFFQPGDPCSRCLCLDGSVS  
 CQRLTCPPAPCAHPRRDACCPSCDGLYQKKEFASGERFPPSPNVACHVCLCWESVSKCEPRTCAPAQCPF  
 PTREDCCPACDSCDYLVSYLSSQEFDPREACNLCTCLGGFVTCRRPCEPPACSHPLIVPEHCCTCQ  
 GCLYHGITAALGETLPDPLDPTCSLCTCEEGSMRCQKKPCPPAPCAHPSGPGFCFVPCRSCLSQGREHQD  
 GEEFEGPEGSCERCRLAGQVSTRQLQCPSLPCLHQVTEPGTCCPRCTGCLARGEHEHPEGSSWVPADSPC  
 SSCMCHKGIITCAVQVCVSIWQEGPSDCCPQCSGCEHGGRKYEPGESFQPGADPCEVCICKQKREGP  
 PSLHCSRRCPSLVGCPPSOLLPPGPQHCCPTCAQALSNCTEDLVGSELVPPDPCYTCQCQDLTWLCTHR  
 ACEPLSCPLWERHTTPGSCCPVCKDPTQSCMHQGRWVASGEQWAVDACTSCSCVAGTVHCQTQRCRKLAC  
 SRDEVPALSPGSCCLRCLPRPASCMAFGDPHYRTFDGRLLHFQGSYVLAKDCHGEDFSVHVTNDRGR  
 RGVAWTQEVAVLLGTVAVRLQLGRTVMVDQHTVTL PFLREPLLYIELRGHTVILHAQPLQVLWDGQSQV  
 EVRVPSYRGQTCGLCGNFNGFAQDDLQPGDGRLLPTEASFNSWKVPKGLGPRPCSAGREVDPCRAAG  
 YRARREANARCGILKTSFPHCHAVVPPEPFFAACVYDLACGPGSSSDTCLCDALEYASHCRQAGVTP  
 VWRGPTLCVVGCPVDRGFVDECGPPCPRTCFNRHIPLGELAAHCVRPCVPGCQCPAGLVEHEGHCSPE  
 VCPPVLLTGD

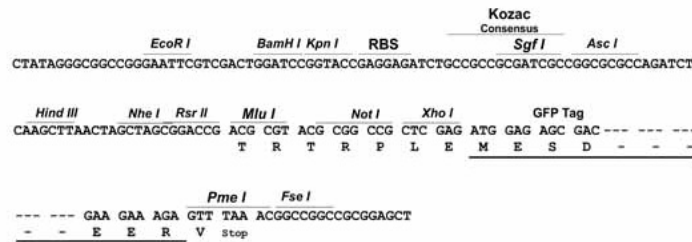
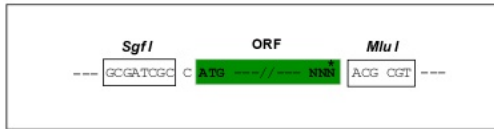
TRTRPLE - GFP Tag - V

**Restriction Sites:**

SgfI-MluI

**Cloning Scheme:**

Cloning sites used for ORF Shuttling:



**ACCN:**

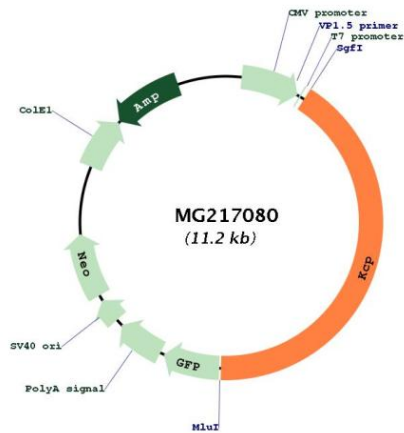
NM\_001029985

**ORF Size:**

4650 bp

<b>OTI Disclaimer:</b>	The molecular sequence of this clone aligns with the gene accession number as a point of reference only. However, individual transcript sequences of the same gene can differ through naturally occurring variations (e.g. polymorphisms), each with its own valid existence. This clone is substantially in agreement with the reference, but a complete review of all prevailing variants is recommended prior to use. <a href="#">More info</a>
<b>OTI Annotation:</b>	This clone was engineered to express the complete ORF with an expression tag. Expression varies depending on the nature of the gene.
<b>Components:</b>	The ORF clone is ion-exchange column purified and shipped in a 2D barcoded Matrix tube containing 10ug of transfection-ready, dried plasmid DNA (reconstitute with 100 ul of water).
<b>Reconstitution Method:</b>	<ol style="list-style-type: none"><li>1. Centrifuge at 5,000xg for 5min.</li><li>2. Carefully open the tube and add 100ul of sterile water to dissolve the DNA.</li><li>3. Close the tube and incubate for 10 minutes at room temperature.</li><li>4. Briefly vortex the tube and then do a quick spin (less than 5000xg) to concentrate the liquid at the bottom.</li><li>5. Store the suspended plasmid at -20°C. The DNA is stable for at least one year from date of shipping when stored at -20°C.</li></ol>
<b>Note:</b>	Plasmids are not sterile. For experiments where strict sterility is required, filtration with 0.22um filter is required.
<b>RefSeq:</b>	<a href="#">NM_001029985.4</a> , <a href="#">NP_001025156.3</a>
<b>RefSeq Size:</b>	4884 bp
<b>RefSeq ORF:</b>	4653 bp
<b>Locus ID:</b>	333088
<b>UniProt ID:</b>	<a href="#">Q3U492</a>
<b>Cytogenetics:</b>	6 A3.3
<b>Gene Summary:</b>	Enhances bone morphogenetic protein (BMP) signaling in a paracrine manner. In contrast, it inhibits both the activin-A and TGFBI-mediated signaling pathways.[UniProtKB/Swiss-Prot Function]

Product images:



Circular map for MG217080