

Product datasheet for **MG217045**

Zscan26 (NM_001013786) Mouse Tagged ORF Clone

Product data:

Product Type:	Expression Plasmids
Product Name:	Zscan26 (NM_001013786) Mouse Tagged ORF Clone
Tag:	TurboGFP
Symbol:	Zscan26
Synonyms:	BC068174; Zfp187; Znf187
Mammalian Cell Selection:	Neomycin
Vector:	pCMV6-AC-GFP (PS100010)
E. coli Selection:	Ampicillin (100 ug/mL)
ORF Nucleotide Sequence:	>MG217045 representing NM_001013786 Red=Cloning site Blue=ORF Green=Tags(s)

TTTTGTAATACGACTCACTATAGGGCGGCCGGAATTCGTCGACTGGATCCGGTACCGAGGAGATCTGCC
GCC**CGATCGCC**

ATGGCACTGGCCTTGGACTCAGCCCAAAGAAGCAGACCAACGGTGTGGTTGGCGAGCCAGCCCCTCGCA
GGGAAGCACGGGAGCAGCCTGGGTGTGCGCTTCCTCAGAAGCCTGAGGAGAGAGGTAAAGAGACAAGGAG
TGAGAAATGGGAATCTCATTGCAGGGACAGACTCTGTGGAAGAATGGAATCATCTGTACCATGACTGAA
CCCATTGAGGCCAGTGTGAGGACCTGAGCTTGAAAAAGAATCCAGCCATGCCAAAGGAAAAAACTAACA
GCCAATGCTTGGAACTAAGGAGAGACTTGTTCAAGACTCAGGCCTGATTGAACATGACAGGGCACATAC
AGGAGAAATGTCTGGGAATCTGTAGGATCTCAGAGTTCTGTTGCTGCTGACCATCAGGAAATCTCTAAA
GACAAAGGTCATCCCTGCCAAGAGTGTGGGAAAGTCTTTCAGAGAAGTTCACACCTCATCAGACATCAGA
AAATCCATCTTGGGAGAAAGCCTTACCAGTGCAAAGAGTGTGGAAAAGTCTTTAGCCAGAATGCAGGTCT
TTTGGAGCATCTCAGGATCCATACTGGAGAAAAACCCTATCTGTGTATCCATTGTGGAAAGAACTTCAGG
CGAAGCTCTCATCTTAATCGACACCAAAAAATTCACAGTCAGGATGAGCCCCGAGAATGCAAGGAGTGTG
GGAAAACCTTTAGTCGGGCCCTCCTCCTCACCCACCATCAGAGAGTCCATGGTCGTTCCAAAAGACATCA
CTGTAATGAGTGTGGGAAAGCCTTCAGCTTGACCTCCGACCTTATTCGACATCATAGGATTCACACTGGA
GAAAAACCTTTCAAATGTAATGTGTGTCAGAAAGCTTTCCGCTAAATTCACACTTAGATCAGCATGTTA
GAATCCACAATGAAGAAAAACCCTACAAGTGCAAGTGAATGCAATGAAGCCTTCAGGCAGAAGTCTGGTCT
CTTTCAGCATCAGAGACATCACCATAAAAGCAAAGTGGCT

ACGCGTACGCGGCCGCTCGAG - GFP Tag - GTTTAA



[View online »](#)

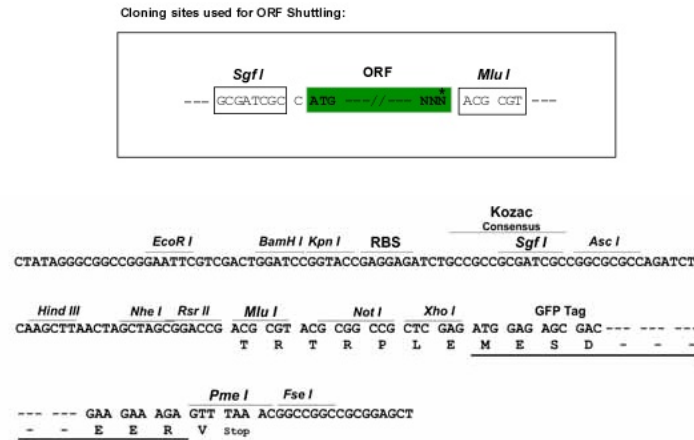
Protein Sequence: >MG217045 representing NM_001013786
 Red=Cloning site Green=Tags(s)

MALALDSAQRSRPTVLVGEPAPRREAREQPGCALPQKPEERGKETRSENGNLIAGTDSGRMESSCTMTE
 PIEAQCEDLSLKKNPAMPKEKTN SQCLETKERLVQNSGLIEHDRAHTGEMSWESVGSQSSVAADHQEISK
 DKGHPCQECGKVFQRSSHLIRHQKIHLGEKPYQCKEKGKVFVSNAGLLEHLRIHTGEKPYLCIHCCKNFR
 RSSHLNRHQKIHSQDEPRECKECKTFSRALLLTHHQRVHGRSKRHHHCNECGKAFSLTSDLIRHHRHTG
 EKPFKCNVCQKAFRLNSHLDQHVRIHNEEKPYKCECNEAFRQKSGLFQHQRHHHHSKLA

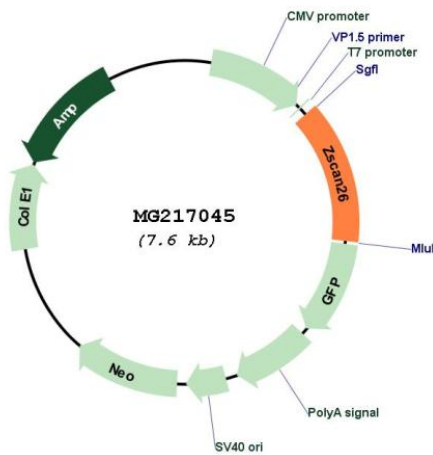
TRTRPLE - GFP Tag - V

Restriction Sites: SgfI-MluI

Cloning Scheme:



Plasmid Map:



ACCN: NM_001013786

ORF Size: 1020 bp

OTI Disclaimer:	The molecular sequence of this clone aligns with the gene accession number as a point of reference only. However, individual transcript sequences of the same gene can differ through naturally occurring variations (e.g. polymorphisms), each with its own valid existence. This clone is substantially in agreement with the reference, but a complete review of all prevailing variants is recommended prior to use. More info
OTI Annotation:	This clone was engineered to express the complete ORF with an expression tag. Expression varies depending on the nature of the gene.
Components:	The ORF clone is ion-exchange column purified and shipped in a 2D barcoded Matrix tube containing 10ug of transfection-ready, dried plasmid DNA (reconstitute with 100 ul of water).
Reconstitution Method:	<ol style="list-style-type: none">1. Centrifuge at 5,000xg for 5min.2. Carefully open the tube and add 100ul of sterile water to dissolve the DNA.3. Close the tube and incubate for 10 minutes at room temperature.4. Briefly vortex the tube and then do a quick spin (less than 5000xg) to concentrate the liquid at the bottom.5. Store the suspended plasmid at -20°C. The DNA is stable for at least one year from date of shipping when stored at -20°C.
RefSeq:	NM_001013786.3
RefSeq Size:	3990 bp
RefSeq ORF:	1023 bp
Locus ID:	432731
UniProt ID:	Q5RJ54
Cytogenetics:	13 A3.1
Gene Summary:	May be involved in transcriptional regulation.[UniProtKB/Swiss-Prot Function]