

## Product datasheet for **MG217044**

### Tns3 (NM\_001083587) Mouse Tagged ORF Clone

#### Product data:

|                                  |                                      |
|----------------------------------|--------------------------------------|
| <b>Product Type:</b>             | Expression Plasmids                  |
| <b>Tag:</b>                      | TurboGFP                             |
| <b>Symbol:</b>                   | Tns3                                 |
| <b>Synonyms:</b>                 | BC023928; F830010I22Rik; TEM6; Tens1 |
| <b>Mammalian Cell Selection:</b> | Neomycin                             |
| <b>Vector:</b>                   | pCMV6-AC-GFP (PS100010)              |
| <b>E. coli Selection:</b>        | Ampicillin (100 ug/mL)               |

**ORF Nucleotide Sequence:** >MG217044 representing NM\_001083587  
Red=Cloning site Blue=ORF Green=Tags(s)

TTTTGTAATACGACTCACTATAGGGCGGCCGGGAATTCGTCGACTGGATCCGGTACCGAGGAGATCTGCC  
GCCGCGATCGCC

ATGGAGGACAGCCACGAACTGGACCTTACGTATGTCACCGAGCGTATCATCGCAGTGTCTTCCCTGCCA  
GTTGTTTCAGAGGAGTCTACTTGCACAGCCTGCAGGAAGTCACACGCATGCTCAAGTGAAGCATGGAGA  
CAACTACCTGGTATTAACCTTTTCAGAGAAGAGATATGACCTTACAAGCTTAATCCAAAGATCATGGAT  
GTGGGCTGGCCGAGCTGCATGCACCTCCTTTGACAAGATGTGCACTATATGTAAGGCTCAGGAGTCT  
GGCTGAACAACGACCCCAAGCATGTGGTCGTCATCCACTGCAGGGTGGTAAAGGACGCATTGGAGTGGT  
CATATCGTCTACATGCACTTACCAACGTCTCAGCCAGTGTGACCAGGCACTGGACAGGTTTGAATG  
AAGAAGTTTATGATGACAAAATTTTCAGCTTTAATGGAGCCCTCCAGAAGCGGTACGTGCAGTTTCTCA  
GCGGGCTACTGTCTGGAGCCATGAAGATGAACACCTCACCTCTGTTCTACACTTCGTCATCATGCATGG  
TGTCGCCAGCTTTGACACTGGAGGAGCTTGCCGGCCCTTTCTGAAGCTCTACCAAGCTATGCAGCCTGTG  
TACACATCTGGAATCTACAATGTCCGCTCTGAAAACCCAGCAGGATCCGCATCGCCATTGAGCCGGCCC  
AGCTGTGAAGGTTGACATCATGGTGAATGTATCACAAGAAGTCCGCTCGGCCACCCGTGATGTCAT  
TTTCCGCTGCAGTCCACACCGGAGCTGTGCAGGGCTACGGGCTTCTGTTGGAAAGGAAGAAGTGGAC  
AGCGCCTGCAAAGATGACCGCTTTCCTGACTATGGCAAGATTGAGTTGGTCTTCTCGGCCACACCTGAGA  
AGATTCAAGGATCGGAGCATCTGTACAGCAGCAGGAGTACCCTGGACTATAACACAGCAGACCCGCT  
GATTCGATGGGACTCCTATGAGAACATGAGTGCAGGATGGAGAAGTGTACACACACAGGGGCCAGTGGAT  
GGCAGCCTGTATGCCAAGGTGAGGAAGAAGAGTGCCTCAGATACTGGCATCCCTAGTAGCCCCAGGGCA  
TGCCAGCCACTAGCAGTCCAGACCAGGAGACCACACCTGTGAGTGCAGCAGGACTCAGGTCATTCTAC  
TGCCCTCCGCCAGGACTGATAAGACAGAAGAGCGCTGACCCCGGAGCAGCAAGAGGCTGAGCCCTCAG  
GAGAAGGCTGAGCTGGACAGCTGCTCAGTGGATTTGGCTGGAAGACTCTGCAAGCTCCCAAAAGACA  
TGACTGATATGCCAGCAAGTACAGTGGGACACGGCATGTGGTACCAGCCAGGTCATGTGAATGGAGA  
TGCTGCCCTAAAGGACCGGAGACTGACATTCTAGATGATGAGATGCCCATCATGATCTTCACAGTGTG  
GACAGCCTGGTACTCTTCTCCTCTGAAGGGCCCCAGTCCACCCACCTGGGTCTTTCACCTGTCTCA



AGAGCAGCCAGAACTCTCTCCTGTCTGATGGCTTTGGCAATGGTGTGCTGAAGATCATAATGGTGTCTCT  
TTCTCCAGACCTGGGCCTTGGTGTAGACACCCCTTACGATCGGGAGCGGATGTGTGGGGCCGAGAGCAA  
AAACCGCTGCAGCCCTGTTGAGGAAGCCCTCTGCACCCACCCAGTGCAGGCCTATGGGCAAAGTAACT  
ATTCCACCCAGACTTGGGTACGTACGACAGCAGATGGTGGCTCTCACCAGTACAGCTTTGCCTCAGATGG  
GGAGGCCAGGCTTGGCAGCCGACGACAGTGGACAATACTGGCCTTGCCAGCCCCACCCACATCCCA  
GTTACTCCCAACCGTGGAGCCAGCAGCAGAGTGGCTGTTGAGAGGCATCAGCAATGGGCCAAATCCCC  
CCGACACACAGCAGCTGTCTGTAAAGCTCTCCAGCCAGATTTCAAGATGACAGAGTACAGATGG  
AGTCCATCAGGAGCCGAACACTGGCTCCTCCCCAGGCTCTCTACTCTGGATATTGATCAGTCCATTGAG  
CAACTCAACAGGCTGATCCTGGAGCTGGACCCACCTTTGAGCCATCCCCACACACCTGAATGCCCTTG  
GCATCTCAGCTGTGTCTGACCGTGTGGGAAGTGGGCTCCGGTGTAGTGGCCGGCTGGACTCTGTGGA  
TGGCCCTGGCCGGAGCCCTGGCCGGCAAGTGTGACCCCATTTGGGGACGGCTTCGTAAGCTGAGCATG  
GGCAGTATGACAATGATGCTCGAGCCAGGTGACCTTCTCTAAGTGTGGATGGGGAAAGGCTGGAGTGG  
ACCCAGCCCCAAGCCTGGGATCATTTTCTCTCCTGAAGACATCAAAGAGACGGTGTACTGCATATCC  
CTCTGACCTCAATATGATCGATGGCAGGATTTCAAACAGCAAGGAGTCACTATGTGTCTGACCCCATCA  
TTCCCTGTGTCTCCGGAACACCATATGTGAAAACATCGCCACGCTACCCTCCGTTCCAGTCCACCTGAGC  
CCCAGCTGAGCAGCCAGCCAGTTTGCACAAAGTTCGAGAACCACGAGGCTGCCAGAGATTATTAGCCA  
CACTGTGGGGATGTGAGAGAGCCCCGTTGGACCCAAACCCACCATGCTTCGGGCTGATATGCCTGCAACA  
CCCACTTTTCCAGCAGGTGTTTGCATCATCTGCACGGTTTCAAGCAATGGCCCTGGCCAGAGGAGAGAGA  
GCCCGCCTTCTGCAGAACGCCAGTGGTGTAGAGAGCAGCCGAAGTCCACCCTCACCTACTGGGGAACAG  
CCACCTTCTGAAAGTCCCTCGGCACTCATGAGTTCTGTAGCTCTGGTAAGGACTCACAGGGCTGCC  
TGCTTCCAGTCTCAGAGCTCCAGGCTCTTTCCACAGCCATGAGCTGTCCATGTGAGGCTCAGGGT  
CTTTGCCTCCTGCGGGCAGCCAAACCTTCTTAGGTTTCAACACAGTAACCACAGCAACAAGTGTCTTCC  
ACCTGGTGAGGACGCTGGCACCTTGTGGTCAATTTCCATGGAACATCACAGCTCCTGGAACCCCTCTG  
CTGACGACAGGGGCTGTGACAACGGCTTTCTGCCCCACAACCTTTCTCACGGTGTACCCCGGAGCCAGCA  
GCCACCACAGTCCAGGCTGCAGAACCAGAACGTGAGCCTGCCTGGGCAGCCACCCCTCCCGGAGAGAA  
GAGAGCGTCGGAGGGTATCGTTCTTTGGGCTCAGTCTCCCATCATCCAGTGGCTTCTCCAGCCCCAC  
AGTGGCAGCACCATGAGCATCCCTTCCGAATGTCTTCCAGACTTCTGCAAGCCTTCAGAAGTGGCCT  
CACCTTTGCCAGATAGCCCAAATGATAAACTCGTGATTGTGAAATTTGTTCAAGACACTTCGAAGTTCTG  
GTACAAGGCAGACATCTCAAGAGAACAAGCCATTGCCATGCTGAAGGACAAAGCCCCGGGTCATTCATC  
GTGAGGGACAGTCACTCCTTCCGAGGGCCTACGGCTGGCCATGAAGGTGGCCACACCTCCTCCGTCGT  
TCCTGCACCTCAACAAGAAAGCTGGAGATTTGTCCAATGAACCTGTCCGGCATTTCCTGATTGAGGTAC  
CCCAAAGGGAGTGGGTTGAAAGGGTGTCAAATGAACCATATTTGGGAGCCTGACGGCTTTGGTGTGC  
CAGATTCCATTACGCCCTTGGCTTTACCTGCAAGCTGTCTATTCCGGAGAGAGATCCACTGGAGGAAA  
TAGCAGAAAACCTCTCCCGACAGCAGCCAACTCTGCAGCCGAGCTGTGAAGCAGGGAGCAGCCTGCAA  
TGTTTGGTACTTAACTCTGTGAAATGGAGTCCCTCACTGGTACCAGGCAGTCCAGAAGGCCCTGAGT  
ATGACCTTGGTTCAAGAACCTCTCCAGTGTCTACAGTGGTACACTTCAAGGTGTGAGCCAGGGCATCA  
CCCTGACTGACAATCAGAGAAAGCTCTTCTCCGGAGGCATTACCCGGTCCAGTGTGATTTTCTGTGC  
TTTGGATCCACAAGACAGGAAGTGGATCAAAGATGGCCCTTCTTAAAGTCTTTGGATTTGTGGCCGG  
AAACAGGGCAGTGTACAGACAACGTATGCCACCTGTTTGCAGAGCATGACCCCGAGCAACCTGCCAGT  
CCATTGCAACTTTGTGTCAAAGTCAATGATTGGCTCCCTAAGAAGATC

ACGGTACGGGCCGCTCGAG - GFP Tag - GTTAA

**Protein Sequence:**

>MG217044 representing NM\_001083587

Red=Cloning site Green=Tags(s)

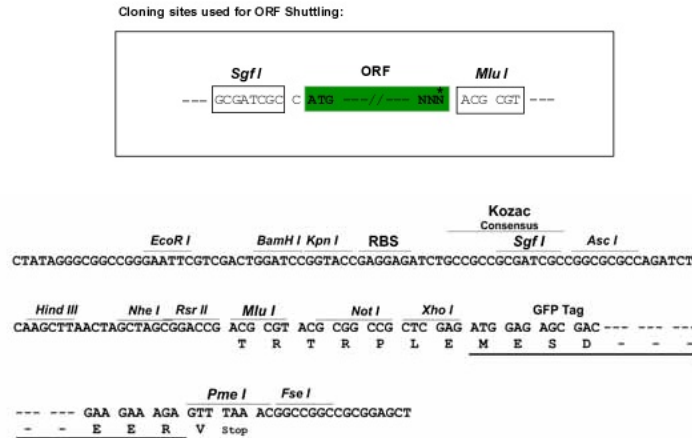
MEDSHELDLTYVTERIIAVSFPASCSEESYLHSLQEVTRMLKCKHGDNYLVNLSEKRYDLTKLNPKIMD  
 VGWPELHAPPLDKMCTICKAQESWLNNDPQHVVIHCRGGKGRIGVVISSMHFTNVSASADQALDRFAM  
 KKFYDDKISALMEPSQKRYVQFLSGLL SGAMKMNTPSPLFLHFVIMHGVPSTDTGGACRPFLKLYQAMQPV  
 YTSGIYVNGSENPSRIRIAIEPAQLLKGDIMVKCYHKKFRSATRDVIFRLQFHTGAVQGYGLLFGKEELD  
 SACKDDRFDPYGKIELVFSATPEKIQGSEHLYSDQGVTVDYNTADPLIRWDSYENMSADGEVLHTQGPVD  
 GSLEYAKVRKKSASDTGIPSSPQGMATSSPDHGDHTLSVSSDSGHSTASARTDKTEERLTPGARRGLSPQ  
 EKAELDQLLSGFLEDSASSHKDMTDMRSKYSSTRHVVAQVHVNGDAALKDRETDILDDDEMPHDLHSV  
 DSLGTLSSSEGPQSTHLGPFTCLKSSQNSLLSDGFNGVAEDHNGVLSDDLGLGVDTLYDRERMCGGREQ  
 KPLQPLL RKP SAPTPVQAYGQSNYSTQTWVRQQMVAHQYSFASDGEARL GSRSTVDNTGLAQPPHIP  
 VTPNRGASSRVAVQRGINSGNPDDTQQLCPGKALQPRFQDDRVTNGVHQEPNTGSSSPGSPTLDIDQSIE  
 QLNRLILELDPTEPIPTHNLALGISAVCPDGVGSLRCSGRLDSVDGPRSPGRQGGDDPIGGRLRKL SI  
 GQYDNDAAASQVTF SKCGWGKAGVDPAPSLGSFSSPEDIKETVITAYPSDLNMIDGRIPNSKESMCLTPS  
 FVPVSPETPYVKTSPRYPPFSPPEPQLSSPASHKGREPRGCP EII SHTVMSESPVGPKPTMLRADMPAT  
 PNFQVQVFASSCTVSSNGPQRRESPPSAERQWVESPSPKSTLTLLGNSHPSESPLGTHEFCSSGKDSPLP  
 CFQSSSELQASFHSHELSMSEPQALPPAGSQTF LGFNTVTTATSVLPPGEDAGTLLVNSHGTSPAPGTP  
 LTTGAADNGFLPHNFLT VSPGASSHHSPGLQNQNVSLPGQPPLPEKKRASEGDRSLGSVSPSSSGFSSPH  
 SGTMSIPFPNVLPDFCKPSEVASPLPDSPNDKLVIKVFQDTSKFWYKADISREQAIAMLKDKAPGSFI  
 VRDSSHFRGAYGLAMKVATPPPSVLHLNKKAGDLSNELVRHFLEICTPKGVRLKGCNEPYFGSLTALVC  
 QHSITPLALPCKLLIPERDPLEEIAENSPQTAANSAEELKQGAACNVWYLSNVEMESLTGHQAVQKALS  
 MTLVQEPVVSTVVFHKSVAQGITLTDNRKLFRRHYVPVSSVIFCALDPQDRKWIKDGPSSKVFGFVAR  
 KQGSATDNVCHLFAEHDPEQPASAI VNFVSKVMIGSPKKI

TRTRPLE - GFP Tag - V

**Restriction Sites:**

SgfI-MluI

**Cloning Scheme:**



**ACCN:**

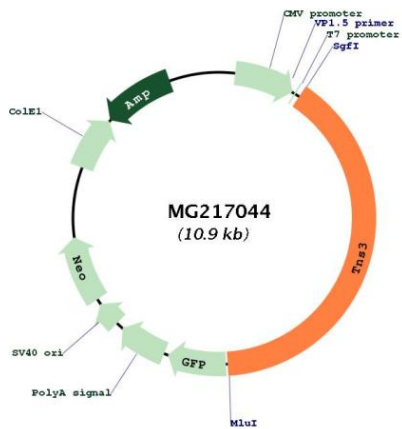
NM\_001083587

**ORF Size:**

4320 bp

|                               |   |
|-------------------------------|---|
| <b>OTI Disclaimer:</b>        | The molecular sequence of this clone aligns with the gene accession number as a point of reference only. However, individual transcript sequences of the same gene can differ through naturally occurring variations (e.g. polymorphisms), each with its own valid existence. This clone is substantially in agreement with the reference, but a complete review of all prevailing variants is recommended prior to use. <a href="#">More info</a>  |
| <b>OTI Annotation:</b>        | This clone was engineered to express the complete ORF with an expression tag. Expression varies depending on the nature of the gene.  |
| <b>Components:</b>            | The ORF clone is ion-exchange column purified and shipped in a 2D barcoded Matrix tube containing 10ug of transfection-ready, dried plasmid DNA (reconstitute with 100 ul of water).  |
| <b>Reconstitution Method:</b> | <ol style="list-style-type: none"><li>1. Centrifuge at 5,000xg for 5min.</li><li>2. Carefully open the tube and add 100ul of sterile water to dissolve the DNA.</li><li>3. Close the tube and incubate for 10 minutes at room temperature.</li><li>4. Briefly vortex the tube and then do a quick spin (less than 5000xg) to concentrate the liquid at the bottom.</li><li>5. Store the suspended plasmid at -20°C. The DNA is stable for at least one year from date of shipping when stored at -20°C.</li></ol> |
| <b>Note:</b>                  | Plasmids are not sterile. For experiments where strict sterility is required, filtration with 0.22um filter is required.  |
| <b>RefSeq:</b>                | <a href="#">NM_001083587.1</a> , <a href="#">NP_001077056.1</a>   |
| <b>RefSeq Size:</b>           | 7483 bp   |
| <b>RefSeq ORF:</b>            | 4323 bp   |
| <b>Locus ID:</b>              | 319939  |
| <b>UniProt ID:</b>            | <a href="#">Q5SSZ5</a>  |
| <b>Cytogenetics:</b>          | 11 A1   |
| <b>Gene Summary:</b>          | May play a role in actin remodeling. Involved in the dissociation of the integrin-tensin-actin complex. EGF activates TNS4 and down-regulates TNS3 which results in capping the tail of ITGB1. Seems to be involved in mammary cell migration (By similarity). May be involved in cell migration and bone development.[UniProtKB/Swiss-Prot Function]   |

Product images:



Circular map for MG217044