

Product datasheet for **MG217041**

Prss57 (NM_001042710) Mouse Tagged ORF Clone

Product data:

Product Type:	Expression Plasmids
Product Name:	Prss57 (NM_001042710) Mouse Tagged ORF Clone
Tag:	TurboGFP
Symbol:	Prss57
Synonyms:	2900092M14Rik; GLGL782; NSP4; Prssl1; UNQ782
Mammalian Cell Selection:	Neomycin
Vector:	pCMV6-AC-GFP (PS100010)
E. coli Selection:	Ampicillin (100 ug/mL)
ORF Nucleotide Sequence:	>MG217041 representing NM_001042710 Red=Cloning site Blue=ORF Green=Tags(s)

TTTTGTAATACGACTCACTATAGGGCGGCCGGAATTCGTCGACTGGATCCGGTACCGAGGAGATCTGCC
GCC**CGATCGCC**

ATGCCATCCTCTACAGCTATGGTGCCTGGGACAAGAGGAGGCTGGCACTGTCTGGTGTGACTACAGCAG
CTGCCCTGACCCAGCTCATGTGGCTCCCTGGTTGCTGTGGGTCCACATTGTTGGAGGCCATGAGGTAAC
GCCACATCCCGGCCCTATATGGCCTCTGTGAGCTTCGAGGGCCATCACTACTGTGGAGGCTTCCTGATT
CATACCCATTGGGTGGTGTGAGCTGCCATTGCTTCAGTGACAGGGACCCCTCCATGGGGCTGGTGGTGC
TGGGGGCCACGCACTGCTCGCCCAGAGCCACACAGCAGACATTTAGCATTGCAGCTGCTGTCAGCCA
TCCTGATTTCCAGCCTGCCACACAGGCCAACGATATCTGCCTGCTAAGGTTGAACGGCTCTGCTGTCTCTG
GGCCCCGCTGTGAGGCTATTACGATTGCCTCGGAGAAATGCTAAGCCACCTGCTGCGGGCACGCGTTGCC
ATGTATCCGGCTGGGGCTTCGTGTCTGACTTTGAGGAGCCTCCGCTGGACTGATGGAAGTCGAGGTGCG
CATACTGGATCTGAGTGTCTGCAACAGCTCCTGGCAGGGCCAGCTGAATCCTGCCATGCTCTGCACTCAC
AGTGGGGACCGCCGGCGGCGTGGTTTCTGCTCGGCAGATTCTGGGGACCCCTGGTCTGTGGAAGACGGG
CCCATGGTCTTGTATCTTCTCAGGCCTCTGGTGTGGTGACCCCAAGACTCCGGATGTCTACACTCAAGT
GTCAGCGTTTGTGACCTGGATCTGGGATGTGGTTCGGGCAAGTTCATCCCTGGTCTACTGGACGCTCT
GTGAGGGCTGTT

AG**CGGACCG**ACGCGTACGCGGCCGCTCGAG - GFP Tag - GTTTAA



[View online »](#)

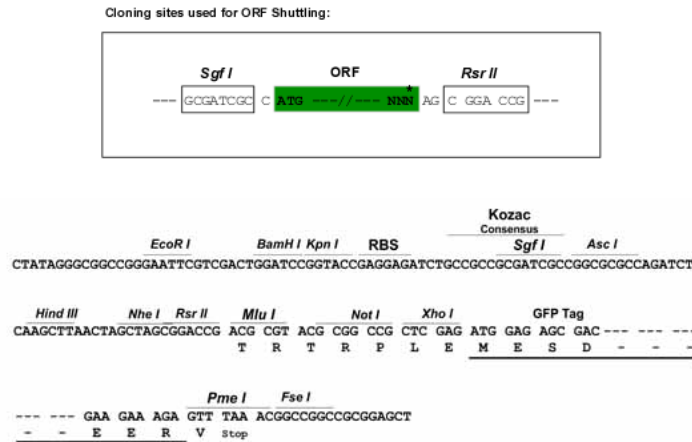
Protein Sequence: >MG217041 representing NM_001042710
 Red=Cloning site Green=Tags(s)

MPSSTAMVPGTRGGWHCLVLTAAALTQLMWLPGCCGSYIVGGHEVTPHSRPYMASVSFEGHHYCGGFLI
 HTHWVVSAAHCFSDRDPSMGLVVLGAHALLAPEPTQQTFSIAAAVSHPDFQPATQANDICLLRLNGSAVL
 GPAVRLRLRPRNAKPPAAGTRCHVSGWGFVSDFEPPPLMEVEVRILDLSVCNSSWQQLNPAMLCTH
 SGDRRRRGFCADSGGPLVCGRRRAHGLVSFSGLWCGDPKTPDVYTQVSAFVTWIWDVVRASSSPGSTGRS
 VRAV

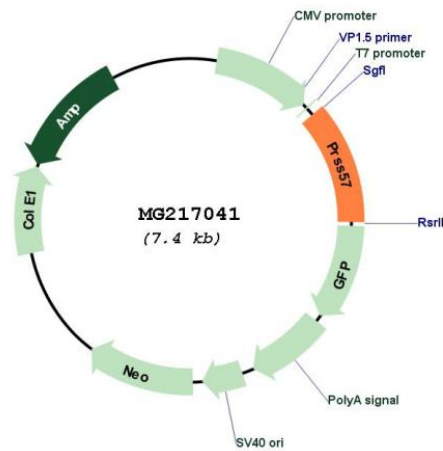
SGPTRRRLE - GFP Tag - V

Restriction Sites: SgfI-RsrII

Cloning Scheme:



Plasmid Map:



ACCN: NM_001042710

ORF Size: 852 bp

OTI Disclaimer:	The molecular sequence of this clone aligns with the gene accession number as a point of reference only. However, individual transcript sequences of the same gene can differ through naturally occurring variations (e.g. polymorphisms), each with its own valid existence. This clone is substantially in agreement with the reference, but a complete review of all prevailing variants is recommended prior to use. More info
OTI Annotation:	This clone was engineered to express the complete ORF with an expression tag. Expression varies depending on the nature of the gene.
Components:	The ORF clone is ion-exchange column purified and shipped in a 2D barcoded Matrix tube containing 10ug of transfection-ready, dried plasmid DNA (reconstitute with 100 ul of water).
Reconstitution Method:	<ol style="list-style-type: none">1. Centrifuge at 5,000xg for 5min.2. Carefully open the tube and add 100ul of sterile water to dissolve the DNA.3. Close the tube and incubate for 10 minutes at room temperature.4. Briefly vortex the tube and then do a quick spin (less than 5000xg) to concentrate the liquid at the bottom.5. Store the suspended plasmid at -20°C. The DNA is stable for at least one year from date of shipping when stored at -20°C.
RefSeq:	NM_001042710.1 , NP_001036175.1
RefSeq Size:	2693 bp
RefSeq ORF:	855 bp
Locus ID:	73106
UniProt ID:	Q14B24
Cytogenetics:	10 C1
Gene Summary:	Serine protease that cleaves preferentially after Arg residues. Can also cleave after citrulline (deimidated arginine) and methylarginine residues.[UniProtKB/Swiss-Prot Function]