

Product datasheet for **MG217034**

Wdr43 (NM_175639) Mouse Tagged ORF Clone

Product data:

Product Type:	Expression Plasmids
Product Name:	Wdr43 (NM_175639) Mouse Tagged ORF Clone
Tag:	TurboGFP
Symbol:	Wdr43
Synonyms:	2610318G08Rik; AU020887; AV024208; mKIAA0007; Wrd43
Mammalian Cell Selection:	Neomycin
Vector:	pCMV6-AC-GFP (PS100010)
E. coli Selection:	Ampicillin (100 ug/mL)



[View online »](#)

ORF Nucleotide Sequence:

>MG217034 representing NM_175639
 Red=Cloning site Blue=ORF Green=Tags(s)

TTTTGTAATACGACTCACTATAGGGCGGCCGGGAATTCGTCGACTGGATCCGGTACCGAGGAGATCTGCC
 GCC**CGGATCGCC**

ATGGCGGCCGGAGCGCGGTAGCTACGACCCCTTGGCCCGCGGGGGTCCCCTGCGCCTTCTCGCCGG
 ACAGTCAAGCCTACTTCGCTTTAGCCTCTAGTGACGGTCAGCTGCGAGTATGGGAGACCGCAACAACCG
 GCTGCACCAGGAGTACGTGCCTTCGCGCACCTCAGCGGTACCTGCACCTGCCTGGCCTGGGCGCCAGCA
 CGGCTGCAGGCCAAGGAAAGTCATCAAAGGAAAAAGGAAATCGGAAGTTACAGGAACAAAGGACCAGG
 CTGACCTGTTGGCTCTTGGCAGGCAGTTGGTAGCATTATTATTGTATAGTACAGTAAGAGGAGAGTTGCA
 CAGTAAATTAACAAGTGGTGGGCATGAAAAAGAGTGAATTGCATACAGTGGCATCAAGACAATGACTGC
 TTATATAGTTGTTAGATGATAAGTATATTGTGGAGTGGAGTACACAGACATGCAAAGTAAAGTGAACAT
 GAAAGGAGACAATAGCAGCGTCAGTCCCTGTGTATCAGCCAGATGAAAGATGTTACTTTTCAGCTGG
 TCGAACAATCAAATATGGGTTTTGGAGACCAAGAAGTCTACAGACACTTCACAGGACATGCGACACCT
 GTTTCGTCGCTTAGGTTACGACCATCAGACCTAATGAGAGCCAGCCTTCTGATGGGATTACAGGCCTTT
 ATTTCTTGCTGGAGCCGTACACGACCGATTACTTAATGTCTGGCAGGTCGGGTACAGAGAACAAGGAGAA
 GAGTGCAGTGTGCTTTTACAGTCACAGACGAGCCTGTCTATGTTGACTTGACTTTGTCAGAAAACAAA
 GAAGAGCCTGTCAAGTTAGCTGTTGTTTGCAGAGATGGTCAAGTTCATCTTTTTGAACACATATTAATG
 GACATTGCAAAAAGCCCTTGACTTCAAATTCACAATCCAGATCGCAACACCTGGAAAGGGCAAGAAAGT
 AACACCAAAACCCATCCCTATTCTAGCAGCTAGCTTTTGCTTAGACAAAATGTCCTTATTGCTGGTGTAT
 GGAATTTGGTTTCAGCCTACCATTGAGCGAGTGGCTTTGAACTCCAAGATACTCATATATGTTTGGAAA
 GAGATATTTCAAATGCTGGGCTCCAACAGTAGAACTGCTATAACCAAGGTAACCAACACAGTAAATGAA
 TTCTGAAGCAAAAAGTTTTGGTGCCTGGGATTCTGGACATCATGCGCCAATCAAGCTGCCGCCCGCCAG
 CCCAAGGAGGCCGAGAACAAGAGGAAATTTGGCAGTACTGAGGCTACCATCGAGGAGCGCCTTGGTGCCA
 TGGACCTAGATAGAAAAGGAAGGAGGACGACCTCAGACAAACAGCTTTGCAGTCCTCCTTACACAGGG
 CTTAGAAAGCAATGATTTTGAATATTAACAAAGTGCTTCAAACCTAAGAATGTAACCTAATAAAGAGG
 ACTGTGCTGAGGATACCGTTGCGTGTGTTATTCCACTGTTGCAAGAGCTTACGAAGAGGTTACAGGGAC
 ATCCCAATAGTGTGCTTAATGATTCACTGGCTGAAGTGTGTGCTGACGATCCATGCATCATACTATC
 TACGTTGCCTGACCTAGTAGAGCAGCTGGGAACACTCTACCAGCTGATGGAAAGCAGAGTCAAACTTTC
 CAGAACTCTCAAACCTGCATGGAACACTATTCTTCTCGTCACGCAAGTTACAGCATCAGAAAAATCGA
 AAAAAATGACCTCTCCCGACAGAAGGCAAAATTTGGTGTATGAAGAAGAGTCTTCTGAGGAGGAGTCTGA
 CGATGAGGTTCCAGAGAAGGATTCTGATGATAATTTGGGACGAAGATGAAGACAAAGACAGTGAAAAAGAT
 GAGGGCGTTGATGAAGACAATGAGGAGGAAGATGAGGACATGGAAGACAAAGAAGAGAATGAGGAGGACA
 GAGAAGTGTCAAGTGA AAAAGAATTAATGGAGATTTCGGATTTAGATCCTGAAAACGAGAGTGAAGAAGA
 A

ACGCGTACGCGGCCGCTCGAG – GFP Tag – GTTTAA

Protein Sequence: >MG217034 representing NM_175639
 Red=Cloning site Green=Tags(s)

```

MAAGGGGSYDPLAPAGVPCAFSPDSQAYFALASSDGLRVWETANNRLHQEYVPSAHLSGTCTCLAWAPA
RLQAKESHQRKKRKSEVTGTDQADLLALGTAVGSILLYSTVRGELHSKLTSGGHENRVNCIQWHQDND
LYSCSDDKIYIVWSTQTCKVKCKWKGDNSVSSLCISPDGKMLLSAGRTIKLWVLETKEVYRHFTGHATP
VSSLRFTTIRPNESQPSDGIITGLYFLSGAVHDLNWNVQVRSENKEKSAVMSFTVTDEPVYVDLTLSENK
EFPVKLAVVCRDQVHLFEHILNGHCKKPLTSNCTIQIATPGKGGKVTPKPIILAASFCLDKMSLLLVY
GNWFQPTIERNVALNSKDTHICLERDISNCWAPTIVETAITKVKTPVMNSEAKVLPVGPVGHAPIKLPAPQ
PKEAENKRLKGSTEAIEERLGAMDLDKGRKDDLQTNFAVLLTQGLSNDFEILNKVLQTKNVNLIK
TVLRIPLRVVPIPLLQELTKRLQGHNSAALMIQWLKCVLTIHASYLSTLPDLVEQLGTLYQLMESRVKTF
QKLSNLHGKLIILLVTQVTASEKSKMTSPGQAKLVYEEESSEESDDEVPEKSDDNWDEDEDKDKSEK
EGVDEDNEEDEDMEDKEENEEDREVSSEKELNGSDLDLPENEESEE
  
```

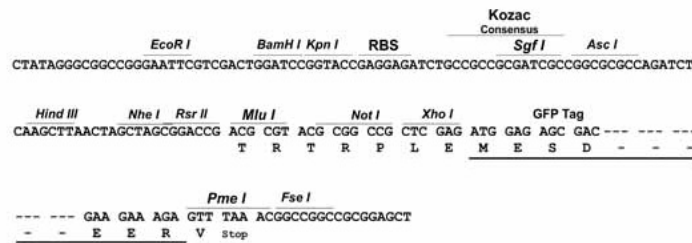
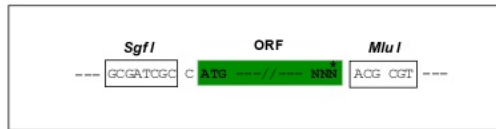
TRTRPLE - GFP Tag - V

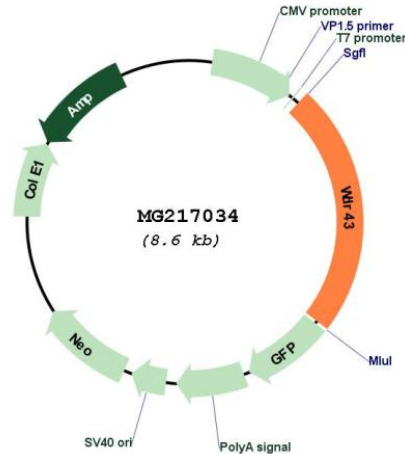
Restriction Sites:

Sgfl-MluI

Cloning Scheme:

Cloning sites used for ORF Shuttling:



Plasmid Map:


ACCN: NM_175639

ORF Size: 2031 bp

OTI Disclaimer: The molecular sequence of this clone aligns with the gene accession number as a point of reference only. However, individual transcript sequences of the same gene can differ through naturally occurring variations (e.g. polymorphisms), each with its own valid existence. This clone is substantially in agreement with the reference, but a complete review of all prevailing variants is recommended prior to use. [More info](#)

OTI Annotation: This clone was engineered to express the complete ORF with an expression tag. Expression varies depending on the nature of the gene.

Components: The ORF clone is ion-exchange column purified and shipped in a 2D barcoded Matrix tube containing 10ug of transfection-ready, dried plasmid DNA (reconstitute with 100 ul of water).

Reconstitution Method:

1. Centrifuge at 5,000xg for 5min.
2. Carefully open the tube and add 100ul of sterile water to dissolve the DNA.
3. Close the tube and incubate for 10 minutes at room temperature.
4. Briefly vortex the tube and then do a quick spin (less than 5000xg) to concentrate the liquid at the bottom.
5. Store the suspended plasmid at -20°C. The DNA is stable for at least one year from date of shipping when stored at -20°C.

RefSeq: [NM_175639.1](#), [NP_783570.1](#)

RefSeq Size: 3450 bp

RefSeq ORF:	2034 bp
Locus ID:	72515
UniProt ID:	<u>Q6ZQL4</u>
Cytogenetics:	17 E1.3
Gene Summary:	Ribosome biogenesis factor. Involved in nucleolar processing of pre-18S ribosomal RNA. Required for optimal pre-ribosomal RNA transcription by RNA polymerase I.[UniProtKB/Swiss-Prot Function]