

Product datasheet for **MG217003**

Ccbe1 (NM_178793) Mouse Tagged ORF Clone

Product data:

Product Type:	Expression Plasmids
Tag:	TurboGFP
Symbol:	Ccbe1
Synonyms:	4933426F18Rik; 9430093N24Rik; mKIAA1983
Mammalian Cell	Neomycin
Selection:	
Vector:	pCMV6-AC-GFP (PS100010)
E. coli Selection:	Ampicillin (100 ug/mL)

ORF Nucleotide Sequence: >MG217003 representing NM_178793
Red=Cloning site Blue=ORF Green=Tags(s)

TTTTGTAATACGACTACTATAGGGCGCCGGGAATTCGTCGACTGGATCCGGTACCGAGGAGATCTGCC
GCCGCGATCGCC

ATGGTGCCGCCCTCTCCGAGCCGGGAGGAGCAGCCAAGAGGCAGCTGGGCAAGAGCCTGGGGCCGC
TGCTGCTACTCCTGGCGTGGGACACACGTGGACCTACCGAGAGGAACCGAGGACCGCAGAGAGGT
GTGCTCTGAAAACAAGATCACCACGACCAAATACCCATGTCTGAAGTCTTCGGGCGAGCTCACCACGTGC
TTCAGGAAAAAATGCTGCAAAGGATATAAATTTGTTCTTGGACAGTGTATTCCAGAAGATTATGACATTT
GTGCCCAAGCTCCCTGTGAACAGCAGTGCACGGATAACTTCGGCCGTGTGCTGTGCAGTGCCTACCCGGG
ATACCGATATGACCGCAGAGACACCAAAAGCGGGAGAGACCGTACTGTCTGGATATCGATGAATGTGCC
ACCAGCAATACCACTCTGTGCACATATCTGCATCAACACCATGGGCAGCTACCACTGTGAGTGTCCGG
AGGGCTACATCCTTGAGGACGATGGGAGGACCTGCACAAGGGGAGACAAATACCCCAATGACTGGGCA
TGAAGAGAAGTCCGAGAATGAGGTGAAAGCCGGGACCTGCTGCGCCACATGCAAAGAGTTCTCCAGATG
AAGCAGACCGTGTGACGCTGAAACAGAAGATGGCGTGTCTCCCAACAATGCCGCTGAACTGGGCAAGT
ATGTCAATGGTGACAAGGTACTGGCCTCAAACGCCTACCTTCAGGACCTCCTGGCCTGCCTGGGGACA
GGGCCACCAAGGCTCACCAGGACCAAGGGGAGCCCTGGATTCCCCGGTATGCCAGGCCTTCCTGGACAG
CCAGGCCACGGGCTCAATGGGACCTATGGGACCTTCCCCTGACCTGTCTCATATTAAGCAAGGCCGGA
GGGGCCCCGTGGGCCACCAAGGAGCACCAGGAAGACACGGCTCCAAGGGGAGAGAGGAGCACCAGGACC
CCCGGGTCTCCGGGACCCCAAGTTCTTTTCGACTTCTGCTGTGTGCTGGCGGACATTCGAAATGAC
ATCGCAGAGCTGCAGGAGAAGGTGTTGGACACCGGACTACTCTCCGCCGAGGACTTCCCCTACCTC
AGGAATTCTCCAGTACCCAGAGACGCTGGACTTTGGCTCTGGAGATGACTACTCCAGAAGAACTGAAGC
AAGGGACCCCGAGGCCCAAGAAATTTTATCCA

ACGCGTACGCGCCGCTCGAG - GFP Tag - GTTTAA



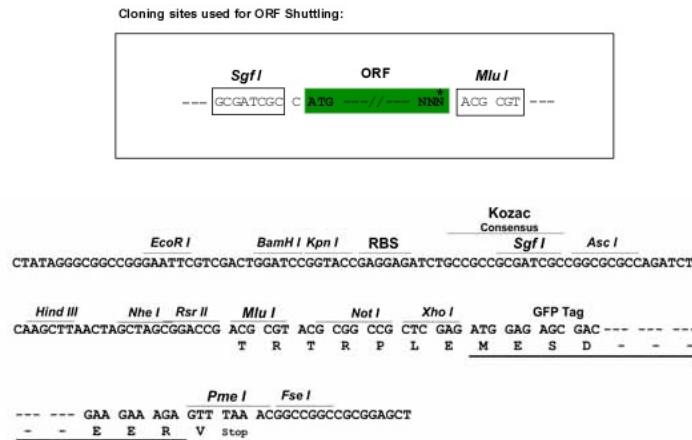
Protein Sequence: >MG217003 representing NM_178793
 Red=Cloning site Green=Tags(s)

MVPPPLPSRGGAAKRQLGKSLGPLLLLLALGHTWTYREEPEDRDREVCSENKITTTKYPCLKSSGELTTC
 FRKKCKGKYKFLVGLQCIPEDYDICAQAPCEQQCTDNFGRVLCTCYPGYRDRERHQKRPYCLDIDECA
 TSNTTLCIAHICINTMGSYHCECREGYILEDDGRTCTRGDKYPNDTGHEEKSENEVKAGTCCATCKEFSQM
 KQTVLQLKQKALLPNNAELGKYVNGDKVLASNAYLPGPPGLPGGQPPGSPGKSPGFPGMPGLPGQ
 PGRGSMGPMGSPDLSHIKQGRGPVGGPAPGRHGSKGERGAPGPPGSPGPFDFLLLVLADIRND
 IAELQEKVFGHRTHSSAEDFLPQEFSSYPETLDFGSGDDYSRRTEARDPEAPRNFYP

TRTRPLE - GFP Tag - V

Restriction Sites: SgfI-MluI

Cloning Scheme:



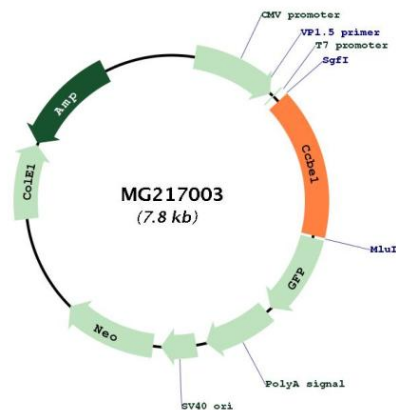
ACCN: NM_178793

ORF Size: 1224 bp

OTI Disclaimer: Due to the inherent nature of this plasmid, standard methods to replicate additional amounts of DNA in E. coli are highly likely to result in mutations and/or rearrangements. Therefore, OriGene does not guarantee the capability to replicate this plasmid DNA. Additional amounts of DNA can be purchased from OriGene with batch-specific, full-sequence verification at a reduced cost. Please contact our customer care team at custsupport@origene.com or by calling 301.340.3188 option 3 for pricing and delivery.

The molecular sequence of this clone aligns with the gene accession number as a point of reference only. However, individual transcript sequences of the same gene can differ through naturally occurring variations (e.g. polymorphisms), each with its own valid existence. This clone is substantially in agreement with the reference, but a complete review of all prevailing variants is recommended prior to use. [More info](#)

OTI Annotation:	This clone was engineered to express the complete ORF with an expression tag. Expression varies depending on the nature of the gene.
Components:	The ORF clone is ion-exchange column purified and shipped in a 2D barcoded Matrix tube containing 10ug of transfection-ready, dried plasmid DNA (reconstitute with 100 ul of water).
Reconstitution Method:	<ol style="list-style-type: none">1. Centrifuge at 5,000xg for 5min.2. Carefully open the tube and add 100ul of sterile water to dissolve the DNA.3. Close the tube and incubate for 10 minutes at room temperature.4. Briefly vortex the tube and then do a quick spin (less than 5000xg) to concentrate the liquid at the bottom.5. Store the suspended plasmid at -20°C. The DNA is stable for at least one year from date of shipping when stored at -20°C.
Note:	Plasmids are not sterile. For experiments where strict sterility is required, filtration with 0.22um filter is required.
RefSeq:	NM_178793.4 , NP_848908.1
RefSeq Size:	5742 bp
RefSeq ORF:	1227 bp
Locus ID:	320924
UniProt ID:	Q3MI99
Cytogenetics:	18 E1
Gene Summary:	Required for lymphangioblast budding and angiogenic sprouting from venous endothelium during embryogenesis.[UniProtKB/Swiss-Prot Function]

Product images:

Circular map for MG217003