

Product datasheet for **MG216998**

Zfp628 (NM_170759) Mouse Tagged ORF Clone

Product data:

Product Type:	Expression Plasmids
Tag:	TurboGFP
Symbol:	Zfp628
Synonyms:	Zec; Znf628
Mammalian Cell Selection:	Neomycin
Vector:	pCMV6-AC-GFP (PS100010)
E. coli Selection:	Ampicillin (100 ug/mL)



ORF Nucleotide Sequence: >MG216998 representing NM_170759
Red=Cloning site Blue=ORF Green=Tags(s)

TTTTGTAATACGACTCACTATAGGGCGCCGGGAATTCGTGACTGGATCCGGTACCGAGGAGATCTGCC
GCCGCGATCGCC

ATGCCCGCTCCCACGTGGACATGGCGCCAGCTTCCACCACCGAGGGAAGTGGGAAAAGCCAGGGCCCA
CTGCGCCAGCACCCACCCAGCTGCTCAGTATGAGTGTGGGAATGCGGCAAGTCTTCAGGTGGTCATC
TCGGCTCCTGCACCATCAGCGCACTCACACAGGTGAACGGCCCTATAAATGCCCGGACTGCCCAAAGCC
TTCAAGGGTTCCTCAGCCCTCTCTACCACCAGCGGGGCCATACAGGCGAGCGGCCCTATCAGTGCCAG
ACTGCCCAAAGCCTTCAAGCGCTCTCTCTGTCAGATCCACCAGTGTGCACACAGGCTGCGGGC
CTTCACTGCGGCGCAGTGTGGTCTGGCCTTCAAGTGGTCAATCCATTACCAATACCATTGAGACAGCAT
ACCGGTGAGCGGCCCTACCCGTGCCCTGACTGCCCAAGGCCTTCAAGAACTCTCCAGCTTGGCGCGCC
ACCGGCATGTGCACACAGGAGAAGCCCTTACACCTGTGCATTTGTGGGAAGAGCTTTACTCAGAGCAC
CAATCTGCGGCAGCACAGCGGTGCACACGGGCGAGCGCCCTTCCGTTGCCACTCTGCCCAAAGACC
TTCACACACTCCTCCAACCTGCTGCTGCACCACCGCACCCACGGCCCTGCCCGCGCCCGCCCTGCC
CCGCCCCCAGGGGAGACCAGCAGAGCTGACACCAAGGTTCTGGTCTCTGATGCCTACTTGACGCCCGG
TAGCCCGCTGAGCCTCAGCCCCACACCCAGCCCGCCCGTGGTGGCCGAGCTTTTTTTGGCTGCT
GCTGAGACTACAGTGGAGCTAGTGTACCCTGCGATGGCTGCGAGCAGGGCTTCCAGCAGGAGGACTCC
TCTTGAGACACCAGCCATGCCCGGGGCCCTGTAGCCACCCAGTCCCAGGATGTGCCTGCCGAGCTGCC
CCAGGTGACTCCGCCCTACCACAGCCCCACCTGCCACTCCAGGCCCTCCTAACTTTGCTTGTCTTCT
TGTGGGAAGTCTTCCGGACGGTGGCTGGCTGTCCCGTACCAGCACAGCCATGGTGGCCAGTGGAC
AGGCCTTTCGCTGTGGCAGCTGTGATGGTGCCTTCCACAAGTGGCCAGCCTTGGCTCACCAGCAGTG
TCAGTGGAGGAGCGGACGCCGAGCGCCACCTCCCAAGCTGAGGTTGCGGAGGTACCTGTCCCCAG
GAACCTGTAGCCCCAGCCACTCTGCCCAACCCCTCTCTCCACCTGCCCGGTGGTTTCTGCAGAGC
GGCCCTACAAGTGTGCCGAGTGTGGGAAGGCCTTCAAGGGTCTTCCGGCTGCGCTACCACCTTCCGGG
CCACACAGGTGAGCGGCCCTACCAGTGTGGGAGTGGGCAAGCCTTCAAACGCTCTCCTCTGCTGGC
ATCCACAGCGTGTGCACACAGGCCTGCGAGCCTTCACTGCGGCCAGTGTGGCCTCACCTTCAAGTGGT
CGTCCCACTATCAGTACCATCTGCGACTTCACTCGGGTGGAGCGGCCCTATGCCTGCACTGAGTGTGGAA
AGCCTTCCGTAACACTTCTGCTGCTGCGGCCACCGGCATGTGCACACCGGTGAGCGGCCCACTCATGT
AGTGTGTGTGGCAAGAGCTTCGCACAGACTCCAAGTGTGGCAGCAGCCAGCGGTGCACACGGGCGAGC
GCCCTTCCGTTGCCCGCTCTGCCCAAGACCTTCCACACTCCTCCAACCTGCTGCTGCACCAGCGCAC
TCATTCTGCCGAGCGCCCTTTTGCCTGCCCAATTTGTGGCCGTGGCTTTGTTATGGTGCCTACCTGCAG
CGGCATCTGAGGACGCACACCCAGCCACCAACTTCCGGCACCACCGGCTCTGCTGTAGCATCGCAGC
CCCCTGCCCATTTGGTGCAGCTCCAAGTGTGGTGCCTCAAGATGTTACAGTACTCCCTAACCTACA
GGCCACACTTTCATTGAAGTGTGGGGAACAGCCAGCCTACGCCCGCCAGGCCCGGCTGCTCCCACT
TCTCAAACATTTCTCCTGGTACAGACTGCCAGGGCCTCCAGCTGATTCCAAGCAGTGTCCAATCCCTA
CTCCTCCACCCCGCCTCCACCCCTAAAGTATTCTGCTGCTCCTGCCAGTGTGGAGGTCCGGGCGAG
TGGTGTGCAAGGCCAGGCCCTCGGTCTGTGGGAAAGCTGGACAGGGGACAGGGGTGGTGTGGTTCCA
GGCCAGGTGGTCTGGGGCTGCAAGGAGGGCCAAATGCAAGGGCTAGCGGGGAGGGCAGAGCCTATTG
TTCTGCAGAATGTAGGGAGTGGGGAGACAGGACCACAGGAAGTGTGGGGTCCAGCTTCCAGCCAGCACA
GGAAGTGGCCACGGTACAAGTACAGCCTGCACAGGAAGTACTACAGTCCAGCTACAACCAGCACAGGAG
GTGACTACGGTCCAGCTCCAGCCCCGACAGGCCAAGTCTCCAATTCTAATGGAGGAGCTGGCAGTACAG
AAGCTCCAAACCTGCTGCTGGTTACAGAGTGGGCAACTGAAGAGTTGCTGACCGGCCCTGGGCCCGGGG
AGTGGGAGACAGTGGGCGGTGCTGGTGTGGTCCAGGACGTCCTGTTGAGACACTGCAGACAGATGAG
GGGCTGCAGAGTGTGCTGGTGTGAGTGGGCGGATGGTGGCAGACTAGGCTCTGCGTGCAGGAGGTGG
AAACGCTTTCCCGGTCTGGCGGAGCCAGCGGCCACTGGCCCATCAGGACAGAACTCCTTATCATTCCG
TAGCGCCAGCTACTGATCTGCTAGAAAATAGCAGGTTGCAGGAGGCCACCAACTGCAACTCCTG
GCCCGTGCAGCCTGGCCGGTCTCTGCCCTGTGGGGTGGCCGTAGCTCCCGCTCCAGATGGTAC
AAGTGGTCCCGCAGTGGCTGGACCAGGGTGTGGCTCCCGAAGTGGCCCTCCATCCAGATTGTGCA
GACTTCTCTGCAGTCCAAGTGTACACAGTTT

ACGCGTACGCGGCCGCTCGAG - GFP Tag - GTTTAA

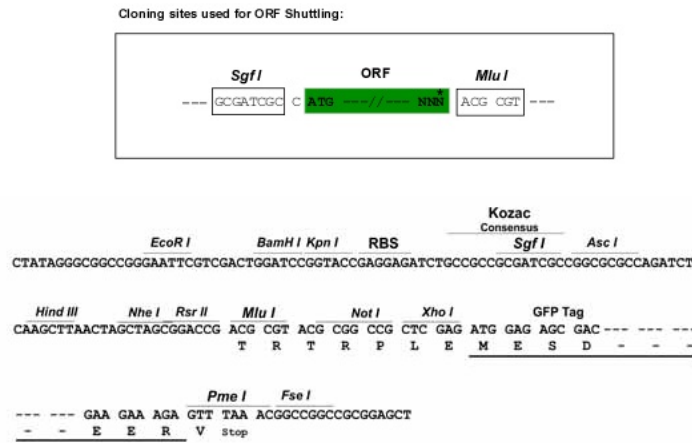
Protein Sequence: >MG216998 representing NM_170759
 Red=Cloning site Green=Tags(s)

MAGSHVDMAPASTTEGTGEKPGPTAPAPTPAAQYECGECGKSFWRSSRLHHQRTHHTGERPYKCPDCPKA
 FKGSSALLYHQRGHTGERPYQCPDCPKAFKRSSLLQIHRVHTGLRAFTCGQCGLAFKWSSHYQYHLRQH
 TGERPYPCDCPKAFKNSSSLRRHRHVHTGERPYTCGICGKSFTQSTNLRQHQRVHTGERPFRCLCPKT
 FTHSSNLLLHHRTHGPA GPAPAPAPPGETSRADTKVLVSDAYLQPRSPPEPPAPPQPPVPELFLAA
 AETTVELVYRCDGCEQGFSSSELLLEHQPCGPPVATQSDVPAELPQADSALPQPPATPQPPNFACLP
 CGKSFRFTVAGLSRHQSHGAASGQAFRCGSCDGAFFQLASLLAHQQCHVEEAAAAGRPPPQAEVAEVTCPQ
 EPVAPATPAPPPPPPPAPVVAERPYKCAECGKAFKGSGLRYHLRDHTGERPYQCGECGKAFKRSSLLA
 IHQRVHTGLRAFTCGQCGLTFKWSSHYQYHLRLHSGERPACTEKGAFRNTSCLRRHRHVHTGERPHSC
 SVCGKSAQTSNLRQHQRVHTGERPFRCLCPKTFTHSSNLLLHQRTHSAERPFACPICGRGFVMAAYLQ
 RHLRHTHPATTTSGTTGSAVASQPPAPLAAAPTPLAAQDVHVLNPLQATLSLEVAGGTAQTPPPGPAAPS
 SQTFLLVQTAQGLQLIPSSVQSPTPPPPPPPKVILLPPASAGGPGSGAARPGPRSVGKAGQGTGVVWFP
 GPGGLGLQGGANAGASGGGQSLIVLQNVGSGETGPQEVSGVQLQPAQEVATVQLQPAQEVTVQLQPAQE
 VTTVQLQPLTGQVNSNGGAGTTEAPNLLLQVSGATEELLTGPGPGEVGDSEAGAGVVQDVLFETLQTD
 GLQSVLVLSGADGEQTRL CVQEVELSPGLAEPAAATGSPGQKLLIIRSAPATDLLENSVAGGTTTLQLL
 APSAPGPVSAPVGPVAPPSQMVQVPAVAGPGVMAPQNLPSIQIVQTLPAVQLVHTF

TRTRPLE - GFP Tag - V

Restriction Sites: SgfI-MluI

Cloning Scheme:

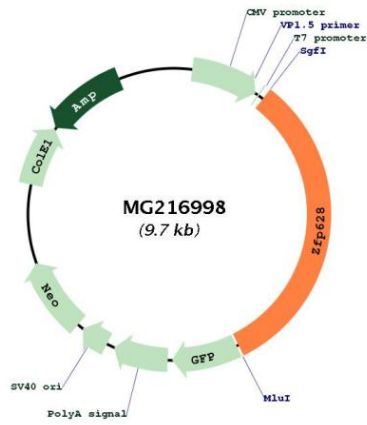


ACCN: NM_170759

ORF Size: 3114 bp

OTI Disclaimer:	The molecular sequence of this clone aligns with the gene accession number as a point of reference only. However, individual transcript sequences of the same gene can differ through naturally occurring variations (e.g. polymorphisms), each with its own valid existence. This clone is substantially in agreement with the reference, but a complete review of all prevailing variants is recommended prior to use. More info
OTI Annotation:	This clone was engineered to express the complete ORF with an expression tag. Expression varies depending on the nature of the gene.
Components:	The ORF clone is ion-exchange column purified and shipped in a 2D barcoded Matrix tube containing 10ug of transfection-ready, dried plasmid DNA (reconstitute with 100 ul of water).
Reconstitution Method:	<ol style="list-style-type: none">1. Centrifuge at 5,000xg for 5min.2. Carefully open the tube and add 100ul of sterile water to dissolve the DNA.3. Close the tube and incubate for 10 minutes at room temperature.4. Briefly vortex the tube and then do a quick spin (less than 5000xg) to concentrate the liquid at the bottom.5. Store the suspended plasmid at -20°C. The DNA is stable for at least one year from date of shipping when stored at -20°C.
Note:	Plasmids are not sterile. For experiments where strict sterility is required, filtration with 0.22um filter is required.
RefSeq:	NM_170759.2 , NP_739565.2
RefSeq Size:	3544 bp
RefSeq ORF:	3117 bp
Locus ID:	232816
UniProt ID:	Q8CJ78
Cytogenetics:	7 A1
Gene Summary:	Transcription activator. Binds DNA on GT-box consensus sequence 5'-TTGGTT-3'. [UniProtKB/Swiss-Prot Function]

Product images:



Circular map for MG216998