

Product datasheet for **MG216974**

Amdhd1 (NM_027908) Mouse Tagged ORF Clone

Product data:

Product Type: Expression Plasmids
Product Name: Amdhd1 (NM_027908) Mouse Tagged ORF Clone
Tag: TurboGFP
Symbol: Amdhd1
Synonyms: 1300019J08Rik
Mammalian Cell Selection: Neomycin
Vector: pCMV6-AC-GFP (PS100010)
E. coli Selection: Ampicillin (100 ug/mL)
ORF Nucleotide Sequence: >MG216974 representing NM_027908
 Red=Cloning site Blue=ORF Green=Tags(s)

TTTTGTAATACGACTCACTATAGGGCGGCCGGAATTCGTCGACTGGATCCGGTACCGAGGAGATCTGCC
 GCC**CGATCGCC**

ATGACTAGCAGCCACCGCCTCTGCTGGAGAACGCACAGCAAGTGGTGTGTGCCCGCGGCGAGC
 GCTTCTGACCGGTCTGCGCTGCGCAGCCTGGCGGTGCTGGAGGGGCCAGCGTGGTGGGCGACTGA
 CGGGCTTATAAAAGCTGTTGGCCCTGCTGCTGTTATCCAAAACAGTTTTCCGGAGAACTTTTGAAGAA
 AGAATTGATTGCTCTGGAAATGCGTCTTGCCAGGTTTGGTGGACGCACACACATCCGGTGTGGCGCG
 GTGAAAGAGTCCACGAGTTTGAATGAAGTTGGCAGGGGCCACGTACATGGACATTCACCAGGCTGGAGG
 AGGGATCAACTTCACGGTGGAGCACACCCGCCAGGCCTCGGAGGAGGAACTGTTCTGCTCCTCCAGCAG
 CGGCTGCAGTGATGATGAGGGCTGGCACCACGCTGGTGGAGTGCAAGAGCGGATATGGCCTCAACCTGG
 AGACAGAGCTCAAGATGCTGCGGTAATCGAGCGGCCAGGCGGGAGCTGCACCTCAGCCTCTCTGCCAC
 TTACTGCGGGGCTCACTCAGTACCCAAAGGGAAAAGTGGCGGTGGAAGCTGCTGATGACATCATCAGTCAC
 CACCTGCCAAGGCTGAAGGAACTCAGCAGAAATGGGGACCTGCATGTTGACAACATAGATGTTCTGTG
 AGAAGGGTGTCTTTGATCTGGATACCACCAGAAGGATTCTGGAAGGTGAAAAAAGATGGGCTTACAGAT
 CAACTTCCATGGGGATGAACTCCACCCGATGAAGGCTGCCGAGCTTGGGGCCAACTGGGAGCACAGGCT
 ATCAGCCACCTAGAGGAAGTCAGTGACGAAGCATTGCTGCCATGGCTGCGGCTCGTTGTTCTGCTGTCC
 TCCTGCCACCACAGCCTACATGCTGAGGCTGAAGCAGCCTCGAGCCAGAAAGATGTTAGACGAGGGTGT
 CATAGTTGCTCTGGGCAGCGATTTCAACCCCAATGCGTACTGCTTTTCCATGCCGATGGTCATGCACCTG
 GCCTGTGTGAACATGAGAATGTCCATGCCGAGGCCTTGGCCGCTGCCACCATCAACGCGCTTATGCGC
 TGGGAAAATCTCACACCCACGGATCTTTGGAAGTTGGCAAGCAGGGGGACGCCATCATCAATGCATC
 CAGATGGGAACATTTGATTTACCAGTTTGGAGGCCATCATGAATTAATTGATTATGTTATAACTAAAGGA
 AAAGTCATCTACAAGAAG

AGCGGACCGACGCGTACGCGGCCGCTCGAG - GFP Tag - GTTTAA



[View online »](#)

Protein Sequence: >MG216974 representing NM_027908
Red=Cloning site Green=Tags(s)

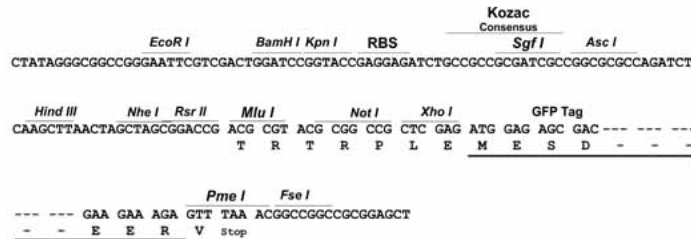
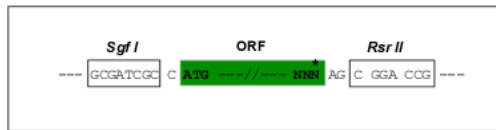
MTSSHRLLENAQQVVLVCARGERFLTGSALRSLAVLEGASVVVGTDGLIKAVGPAAVIQKQFSGETFEE
 RIDCSGKCVLPGLVDAHTHPVWAGERVHEFAMKLAGATYMDIHQAGGGINFTVEHTRQASEEELFCSFQQ
 RLQCMRAGTTLVECKSGYGLNLETELKMLRVIERARRELHLSL SATYCGAHSVPGKTAVEAADDIISH
 HLPRLKELSRNGDLHVDNIDVFCEKGVFDLDTTRRILEGGKMGQLQINFHGDELHPMKAELGAELGAQA
 ISHLEEVSDGIAAMAAAARCSAVLLPTTAYMLRLKQPRARKMLDEGVIVALGSDFPNPAYCF SMPMMHL
 ACVNMRMSPEALAAATINAAYALGKSHTHGSLEVGKQGD AII INASRWEHLIYQFGGHHELIDYVITKG
 KVIYKK

SGPTRRRLE - GFP Tag - V

Restriction Sites: SgfI-RsrII

Cloning Scheme:

Cloning sites used for ORF Shuttling:



ACCN: NM_027908

ORF Size: 1278 bp

OTI Disclaimer: The molecular sequence of this clone aligns with the gene accession number as a point of reference only. However, individual transcript sequences of the same gene can differ through naturally occurring variations (e.g. polymorphisms), each with its own valid existence. This clone is substantially in agreement with the reference, but a complete review of all prevailing variants is recommended prior to use. [More info](#)

OTI Annotation: This clone was engineered to express the complete ORF with an expression tag. Expression varies depending on the nature of the gene.

Components: The ORF clone is ion-exchange column purified and shipped in a 2D barcoded Matrix tube containing 10ug of transfection-ready, dried plasmid DNA (reconstitute with 100 ul of water).

Reconstitution Method:

1. Centrifuge at 5,000xg for 5min.
2. Carefully open the tube and add 100ul of sterile water to dissolve the DNA.
3. Close the tube and incubate for 10 minutes at room temperature.
4. Briefly vortex the tube and then do a quick spin (less than 5000xg) to concentrate the liquid at the bottom.
5. Store the suspended plasmid at -20°C. The DNA is stable for at least one year from date of shipping when stored at -20°C.

RefSeq: [NM_027908.1](#), [NP_082184.1](#)

RefSeq Size: 2421 bp

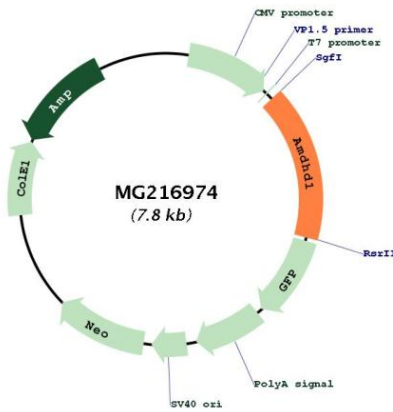
RefSeq ORF: 1281 bp

Locus ID: 71761

UniProt ID: [Q9DBA8](#)

Cytogenetics: 10 C2

Product images:



Circular map for MG216974