

Product datasheet for **MG216965**

Rhd (NM_011270) Mouse Tagged ORF Clone

Product data:

Product Type: Expression Plasmids
Product Name: Rhd (NM_011270) Mouse Tagged ORF Clone
Tag: TurboGFP
Symbol: Rhd
Synonyms: Rh; Rhced; Rh1
Mammalian Cell Selection: Neomycin
Vector: pCMV6-AC-GFP (PS100010)
E. coli Selection: Ampicillin (100 ug/mL)
ORF Nucleotide Sequence: >MG216965 representing NM_011270
 Red=Cloning site Blue=ORF Green=Tags(s)

TTTTGTAATACGACTCACTATAGGGCGGCCGGAATTCGTCGACTGGATCCGGTACCGAGGAGATCTGCC
 GCC**CGATCGCC**

ATGGGCTCTAAGTACCCACGGTCCCTCCGCTGCTGCCCTGTGGCCTTGGAGCTACAGACAGCTT
 TTAGTCTCCTCTTCTGTTTTTCATCCCCACGACACAGCCAGGTGGATCACAGGTTTCATGGCGAGCTA
 TCAAGTCTCCGGAATTTGACCCTCATGGCAGCCTTGGGCTTCGGCTTCTGTCTCGCTTTTCGGAGA
 CACAGCTGGAGCAGTGTGGCCTCAACCTCTTCATGTTGGCCCTCGGGTGCAGGGAACAATCTTGCTGG
 ACCATTTCTGGCCAGGTCCTCAATGGAACAAGATCAACAATCTGTCCAGCATCCAGATAGCTACCAT
 GAGCACCTTACCTGTGCTGATCTCAGCGGGCGCTGCTGGGGAAGGTCAACCTGGTGCAGCTGACCGTG
 ATGGTGTGATGGAGGAATGGCCTTTGGTGCCATCAGATTTGCCGACGAGAAGGTCTTCAAATGACAG
 AACACATCATGATGCACGGGCACGTGTTGGGGCCTATTTGGGCTAACTGTGGCTTGGTGGCTTTC
 CAGATCTCTGCCAGGAGAGTGGGTGAGAACGCCAGACAGAGAAGGTTCAAATGGCTACGAGCTCCAGT
 CTGTTGGCCATGCTGGGCACCCTCTTCTGTGGATATTCTGGCCAGCTATCAACTCTGCTCTCTGGAAG
 GGACAAAGAAAAGGAATGCTGTGTTCAACACCTACTACGCCCTGGCAGTGAGCGCAGTGACAGCCACCTC
 CATGTACGCCCTGAGTCAACCCTCAAGGGAAGATCAACATGGTTCCATCCACAATGCAGTGTGGCAGGG
 GGCGTGGCCGTGGGCGCCCGGGTTCCTGATTTCTTACCTTGGATTTCATGGTCCATGGGCTCATAG
 CTGGTTGATCTCCATCTGGGGAGCCAAGTGTCCACGGGCGTGTGTAACCACATGCTGCAGAATCCAG
 TGGGATCCACTACACCTTCGGCTTGCCGGTCTGCTGGGAGCACTTACCTACTACTGCCTTCAGATAGTG
 ACAGAGCCCAAGTCTCGGATCTCTGGATCATCCCCAGACGGTCACTCACATTGGGGCTCTCAGCTTCG
 CTGTGGCGATGGGTATGGTGACTGGACTCCTCACAGGTTGTCTCCTAAGTGTGAGAGTGTGGAGGGCTCC
 CCATGCGCCAAGTATTTTGATGATCAGACTTTCTGGGAGTTCACACTTGGCGTTGGATTT

ACGCGTACGCGGCCGCTCGAG - GFP Tag - GTTTAA



[View online >](#)

Protein Sequence: >MG216965 representing NM_011270
Red=Cloning site Green=Tags(s)

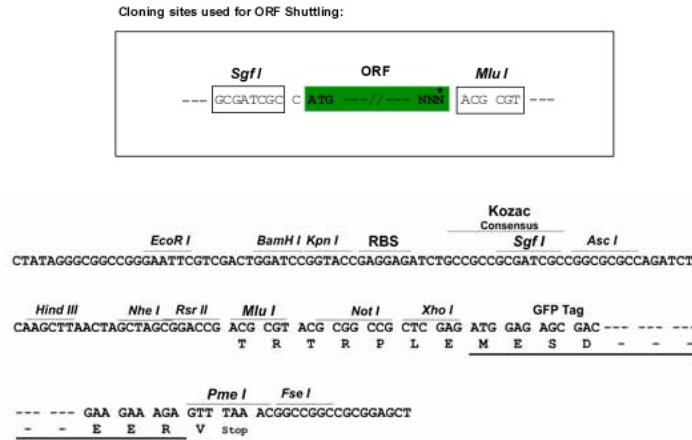
MGSKYPRSLRCLPLWALELQTAFSLLFCFFIPHDTAQVDHRFMASYQVLRNLTLMALGFGFLSSSFRR
 HSWSSVAFNLFMLALGVQGTILLDFLQVQLQWNKINNLSIQIATMSTLPVLISAGAVLGKVNLVQLTV
 MVLMEAMAFGAIRFADEKVFKMTEHIIMMHGHVFGAYFGLTVAWWLSRSLPRRVGENAQTEKVQMATSSS
 LFAMLGTLFLWIFWPAINSALLEGTTKRNVAVENTYYALAVSAVTATSMSALSHPQKINMVHIHNAVLAG
 GVAVGAPGCLISSPWISMLGLIAGLISIWGAKCPRACLNHMLQNSSGIHYTFGLPGLLGALTYCLQIV
 TEPKSSDLWIITQTVTHIGALSFAVAMGMVTGLLTGCLLSVRVWRAPHAACYFDDQTFWEFPHLAVGF

TRTRPLE - GFP Tag - V

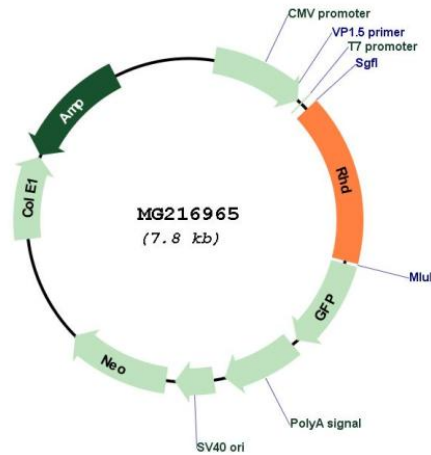
Restriction Sites:

SgfI-MluI

Cloning Scheme:



Plasmid Map:



ACCN:

NM_011270

ORF Size:	1254 bp
OTI Disclaimer:	The molecular sequence of this clone aligns with the gene accession number as a point of reference only. However, individual transcript sequences of the same gene can differ through naturally occurring variations (e.g. polymorphisms), each with its own valid existence. This clone is substantially in agreement with the reference, but a complete review of all prevailing variants is recommended prior to use. More info
OTI Annotation:	This clone was engineered to express the complete ORF with an expression tag. Expression varies depending on the nature of the gene.
Components:	The ORF clone is ion-exchange column purified and shipped in a 2D barcoded Matrix tube containing 10ug of transfection-ready, dried plasmid DNA (reconstitute with 100 ul of water).
Reconstitution Method:	<ol style="list-style-type: none">1. Centrifuge at 5,000xg for 5min.2. Carefully open the tube and add 100ul of sterile water to dissolve the DNA.3. Close the tube and incubate for 10 minutes at room temperature.4. Briefly vortex the tube and then do a quick spin (less than 5000xg) to concentrate the liquid at the bottom.5. Store the suspended plasmid at -20°C. The DNA is stable for at least one year from date of shipping when stored at -20°C.
RefSeq:	NM_011270.3 , NP_035400.3
RefSeq Size:	1530 bp
RefSeq ORF:	1257 bp
Locus ID:	19746
UniProt ID:	Q8CF94
Cytogenetics:	4 67.13 cM
Gene Summary:	May be part of an oligomeric complex which is likely to have a transport or channel function in the erythrocyte membrane.[UniProtKB/Swiss-Prot Function]