

Product datasheet for **MG216947**

Rpl9 (NM_011292) Mouse Tagged ORF Clone

Product data:

Product Type: Expression Plasmids
Product Name: Rpl9 (NM_011292) Mouse Tagged ORF Clone
Tag: TurboGFP
Symbol: Rpl9
Synonyms: MGC102393
Mammalian Cell Selection: Neomycin
Vector: pCMV6-AC-GFP (PS100010)
E. coli Selection: Ampicillin (100 ug/mL)
ORF Nucleotide Sequence: >MG216947 representing NM_011292
 Red=Cloning site Blue=ORF Green=Tags(s)

TTTTGTAATACGACTCACTATAGGGCGGCCGGAATTCGTCGACTGGATCCGGTACCGAGGAGATCTGCC
 GCC**CGATCGCC**

ATGAAGACCATTCTCAGCAATCAGACTGTGGACATTCAGAGAATGACGAAATCACTCTGAAGGGCGCA
 CAGTCATTGTGAAGGGCCCCAGGGGACTCTGCGGAGGGACTTCAATCACATCAACGTGGAGCTGAGTCT
 TCTTGGGAAGAAGAAGAAAAGGCTCCGGGTTGACAAATGGTGGGTAACAGAAAGGAACTGGCCACCGTC
 AGGACCATCTGCAGTCATGTTCAGAACATGATCAAGGGTGTACGCTGGGCTTCCGATACAAGATGCGGT
 CTGTGTACGCTCACTTCCCCATCAACGTGTCATCCAGGAGAATGGCTCTTTGGTTGAAATCCGAAATTT
 CTTGGGTGAAAAATACATCCGCAGGGTTTGGATGAGGACAGGTGTGGCTTGTCTCTCAAGCCAG
 AAGGATGAGTTAATCCTTGAAGGAAATGACATTGAACTTGTTCAAATTCAGCTGCCCTGATTCGGCAAG
 CCACAACAGTTAAAAACAAGGATATCAGGAAGTTTTGGACGGCATCTATGTGTCTGAGAAGGGAAGTGT
 GCAGCAGGCTGACGAG

ACGCGTACGCGGCCGCTCGAG - GFP Tag - GTTTAA

Protein Sequence: >MG216947 representing NM_011292
 Red=Cloning site Green=Tags(s)

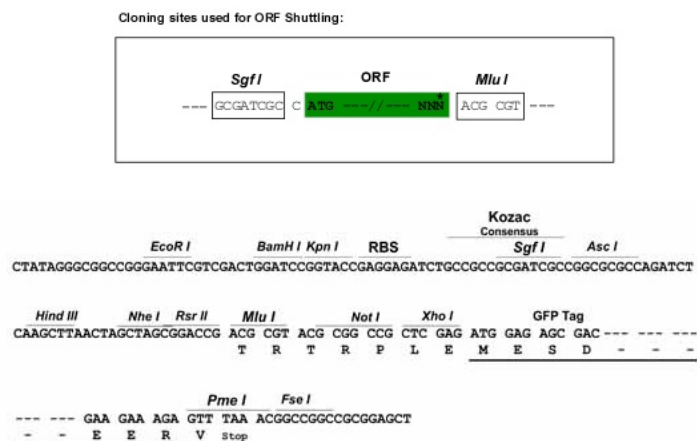
MKTILSNQTVDIPENDEITLKGRTVIVKGRGTLRRDFNHINVELSLGKKKRLRVDKWWGNRRELATV
 RTICSHVQNMIVKGLFRYKMRVYAHFPINVVIQENGLVEIRNFLGEKYIRRVWVRTGVACSVSQAQ
 KDELILEGNDIELVNSAALIRQATTVKNKDIRKFLDGIYVSEKGTVQQADE

TRTRPLE - GFP Tag - V

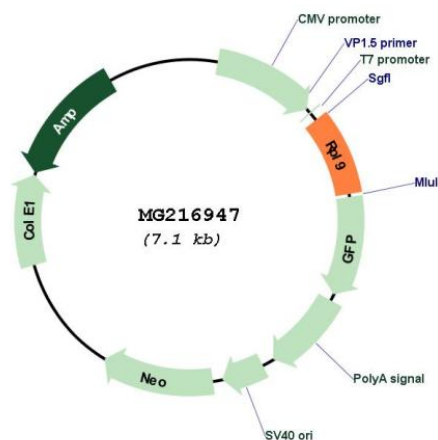
Restriction Sites: SgfI-MluI



Cloning Scheme:



Plasmid Map:



ACCN: NM_011292

ORF Size: 576 bp

OTI Disclaimer: The molecular sequence of this clone aligns with the gene accession number as a point of reference only. However, individual transcript sequences of the same gene can differ through naturally occurring variations (e.g. polymorphisms), each with its own valid existence. This clone is substantially in agreement with the reference, but a complete review of all prevailing variants is recommended prior to use. [More info](#)

OTI Annotation: This clone was engineered to express the complete ORF with an expression tag. Expression varies depending on the nature of the gene.

Components: The ORF clone is ion-exchange column purified and shipped in a 2D barcoded Matrix tube containing 10ug of transfection-ready, dried plasmid DNA (reconstitute with 100 ul of water).

Reconstitution Method:

1. Centrifuge at 5,000xg for 5min.
2. Carefully open the tube and add 100ul of sterile water to dissolve the DNA.
3. Close the tube and incubate for 10 minutes at room temperature.
4. Briefly vortex the tube and then do a quick spin (less than 5000xg) to concentrate the liquid at the bottom.
5. Store the suspended plasmid at -20°C. The DNA is stable for at least one year from date of shipping when stored at -20°C.

RefSeq: [NM_011292.2](#), [NP_035422.1](#)

RefSeq Size: 737 bp

RefSeq ORF: 579 bp

Locus ID: 20005

UniProt ID: [P51410](#)

Cytogenetics: 5 C3.1