

Product datasheet for **MG216942**

Med15 (NM_033609) Mouse Tagged ORF Clone

Product data:

Product Type:	Expression Plasmids
Product Name:	Med15 (NM_033609) Mouse Tagged ORF Clone
Tag:	TurboGFP
Symbol:	Med15
Synonyms:	A230074L19Rik; AW536074; mPcqap; Pcqap
Mammalian Cell Selection:	Neomycin
Vector:	pCMV6-AC-GFP (PS100010)
E. coli Selection:	Ampicillin (100 ug/mL)



[View online »](#)

ORF Nucleotide
Sequence:

>MG216942 representing NM_033609
Red=Cloning site Blue=ORF Green=Tags(s)

TTTTGTAATACGACTCACTATAGGGCGGCCGGGAATTCGTCGACTGGATCCGGTACCGAGGAGATCTGCC
GCCGCGATCGCC

ATGGACGTTTTCGGGCAGGAGACCGACTGGCGTAGCGCCGCTTTTCGGCAGAAGCTGGTCAGCCAAATTG
AGGATGCCATGAGGAAAGCTGGTGTGGCCACAGTAAATCTAGCAAGGATATGGAGAGTCATGTGTTCTT
GAAGGCCAAGACCCGGGATGAGTATCTTTCCCTTGTGGCCGACTCATTATCCATTTCCGAGATATTCAT
AACAGAATAATCCCAAGCTTCTGTGACTGACCCCATGAATGCACTGCAGAGCCTTACTGGTGGACCCACCC
CAGGAGCAGCTGGGATTGGCATGCCTCTCGGGGCCAGGACAGTCCCTGGTGGGATGGTGGCCTTGG
CGCTATGGGACAACCACTGCCCTCTCCGGGAACCAACCCCTGGAACCTCTGGAATGGCCCTCATGGC
ATGGCTGTGGTGTCTACAGCACTCCACAGACTCAGCTGCAGCTCCAGCAAGTGGCATTGCAGCAACAGC
AGCAGCAGCAACAACAACAGCAATTCAGCAACAGCAGGCAGCAGTGCAGCAACAGCAGCAACAGCAGCA
GCAGCAACAGCAGCAACAGCAGTTCAGGCACAACAGAATGCCATGCAGCAACAGTTCGAAGCAGTAGTG
CAGCAGCAGCAGCTTCAGCAGCAGCAGCAGCAGCAGCACCTGATTAAGTTGCATCATCAAAGCCAGCAAC
AACAGATACAACAGCAGCAACTGCAGAGGATGGCAGATTGCAGCTGCAGCAACAGCAACAGCAGCAACA
GCAGCAGGCTTTGCAGGCCAGCCACCAATGCAGCAGCCATCAATGCAGCAGCCACAGCCTCCCCCTTCT
CAGGCCCTACCCAGCAGCTGTACAGCTGCATCATCCACAGCATCACCAGCCACCACCTCAGGCTCAGC
AGTCCCCATTGCTCAAAACCAACCACCACAGATCCCACCACAGTCACAGAGCCAGCCTTTGGTGTCA
AGCACAAGCCCTTCTGGACCGATGCTGTATGCTGCCAACAGCAGCTGAAATTTGTCGGTGTCCGATG
GTGGTCCAGCAGCCGCAAGTGCAGCCCAAGTGCAGCAGGTGCAGCCCAAGTGCAGCCGAGCCAGCAGC
TGCAGGCAGCACAGTCTGCCAGATGGTAGCTCCCGCGTCCAGATGATTGCTGAAGCTTGGCCCAAGG
CGGGATGCACGTAAGAGCCCGTTCCCGCCACCTCCACCATGTCTGCTGGCCCGTCAAGCTCCATCTCT
TTGGGCGGACAGCCACAACACAGGTGACGCCAAAGCAGCCTCACCATGCTGTCTCACCGTCACCAGGCC
AGCAGGTGCAGACCCACAGTCGATGCCACCTCCCCACAGCCGTCCCCACAACCTGGCTCACAGCCCAA
CTCTAATGTCAGCTCCGGCCCTGCCCATCTCCAGCAGCTTCTGCCTAGCCCTTACCACAGCCTTCT
CAGAGCCAGTGACAGCAGCAGCCACAGAACTTCAGCGTTCCTTCCCTGGACCTTTAAACACCCCTG
TGAACCCAGCTCTGTCATGAGCCAGCTGGCTTAGCCAGGCTGAGGAGCAGCAGTACCTGGACAAGCT
GAAGCAATTGTCCAAGTACATCGAGCCCTGCGACGCATGATCAACAAGATCGACAAGAATGAAGACAGA
AAAAGGACTTAAGTAAGATGAAGAGCCTGCTGGACATCCTCACCAGCCCTCGAAGAGGTGCCCCTGA
AGACCCTGCAAAAGTGTGAGATTGCGCTGGAGAAGCTCAAGAATGACATGGCAGTGCCACACCCCCACC
ACCCCCAGTTCTTCAACCAAAACAGCAGGACCTGTGCCAACCACTCCTAGATGCAGTCTGGCCAACATC
CGTTACCTGTCTTCAACCATCCCTGTACCGCACATTTGTGCCAGCCATGATGGCCATCCATGGCCAC
CTATCGTGTGCCAGTGGTGTGTTCCCGGAAGCGCCGTTTGGAGGAGATGAGCGGCAGAGCATAACCAA
TGTGCTGCAAGGTGAAGTGGCAAGGCTGGATCCCAAGTTCCTGGTGAACCTGGACCTTCTCACTGCAGC
ACAACGGTACTGTCCACCTGATCTGCAAGCTGGATGATAAGGACCTCCCTAGTGTGCCACCACTGGAGC
TCAGTGTGCTGCTGACTACCTGCCAGAGCCCAATGTGGATCGACCGTCAGTGGAATATGATGCCAA
CCCCTTTCTGCAGTCAGTGACCGGTGCATGACCTCAAGGCTGCTGCAGTCCCTGACAAGCACTCGGTC
ACAGCGCTGCTCAACACCTGGGCCAGAGCATCCACCAGGCTGCCTCTCAGCTGCC

ACGCGTACGCGGCCGCTCGAG - GFP Tag - GTTTAA

Protein Sequence: >MG216942 representing NM_033609
 Red=Cloning site Green=Tags(s)

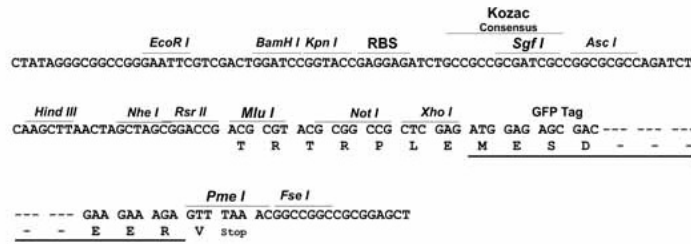
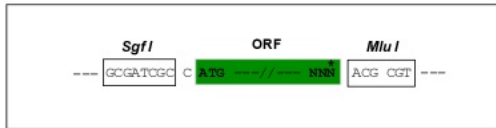
```
MDVSGQETDWRSAAFRQKLVSQIEDAMRKAGVAHSSKSKDMESHVFLKAKTRDEYLSLVARLIIHFRDIH
NKKSQASVSDPMNALQSLTGGPTPGAAGIGMPPRGPGQSLGGMGGLGAMGQPLPLSGQPPPSTSGMAPHG
MAVVSTATPQTQLQLQQVALQQQQQQQQQQFQQQQAALQQQQQQQQQQQQQFQAQQNAMQQQFQAVV
QQQQLQQQQQQHLIKLHHQSQQQIQQQQLQRMAQLQLQQQQQQQQQALQAQPPMQQPSPMQQPSPPS
QALPQQLSQLHHPQHHPQPPQAQQSPIAQNPPQIPPSQSQPLVSQAQALPGPMLYAAQQQLKFRAPM
YVQQPQVQPQVQVQPQVQAAVQAAQSAQMVAPGVQMIAEALAQGMHVRARFPPTSTMSAGPSSSIS
LGGQPTTVQSQSSLTMLSPPSPGQVQTPQSMPPPPQSPQPGSQPNSNVSSGPAPSPSSFLPSPSPQPS
QSPVTARTPQNFVSPSPGLNTPVNPSSVMSPAGSSQAEQQYLDKLKQLSKYIEPLRRMINKIDKNEDR
KKDL SKMKSLLDILDTPSKRCPLKTLQKCEIALEKLNDAVPTPPPPVLPKQQDL CQPLLDVLANI
RSPVFNHSLYRTFVPAMMAIHGPPIVSPVCSRRRFEEDERQSIPNVLQGEVARLDPKFLVNLDP SHCS
NNGTVHLICKLDDKDLPSVPPEL SVPADYPAQSPMWIDRQWQYDANPFLQSVHRCMTSRLQLPDKHSV
TALLNTWAQSIHQACLSAA
```

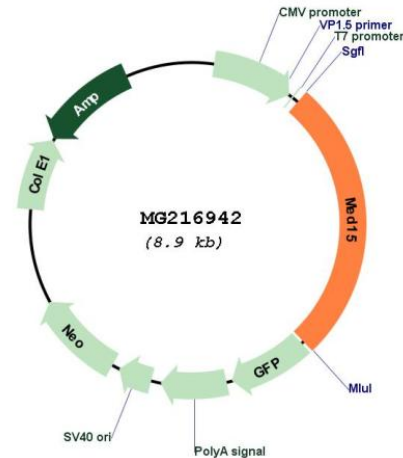
TRTRPLE - GFP Tag - V

Restriction Sites: SgfI-MluI

Cloning Scheme:

Cloning sites used for ORF Shuttling:



Plasmid Map:


ACCN: NM_033609

ORF Size: 2367 bp

OTI Disclaimer: The molecular sequence of this clone aligns with the gene accession number as a point of reference only. However, individual transcript sequences of the same gene can differ through naturally occurring variations (e.g. polymorphisms), each with its own valid existence. This clone is substantially in agreement with the reference, but a complete review of all prevailing variants is recommended prior to use. [More info](#)

OTI Annotation: This clone was engineered to express the complete ORF with an expression tag. Expression varies depending on the nature of the gene.

Components: The ORF clone is ion-exchange column purified and shipped in a 2D barcoded Matrix tube containing 10ug of transfection-ready, dried plasmid DNA (reconstitute with 100 ul of water).

Reconstitution Method:

1. Centrifuge at 5,000xg for 5min.
2. Carefully open the tube and add 100ul of sterile water to dissolve the DNA.
3. Close the tube and incubate for 10 minutes at room temperature.
4. Briefly vortex the tube and then do a quick spin (less than 5000xg) to concentrate the liquid at the bottom.
5. Store the suspended plasmid at -20°C. The DNA is stable for at least one year from date of shipping when stored at -20°C.

RefSeq: [NM_033609.3](#)

RefSeq Size: 3383 bp

RefSeq ORF: 2370 bp

Locus ID: 94112

UniProt ID: [Q924H2](#)

Cytogenetics: 16 10.94 cM

Gene Summary:

Component of the Mediator complex, a coactivator involved in the regulated transcription of nearly all RNA polymerase II-dependent genes. Mediator functions as a bridge to convey information from gene-specific regulatory proteins to the basal RNA polymerase II transcription machinery. Mediator is recruited to promoters by direct interactions with regulatory proteins and serves as a scaffold for the assembly of a functional preinitiation complex with RNA polymerase II and the general transcription factors. Required for cholesterol-dependent gene regulation. Positively regulates the Nodal signaling pathway (By similarity).[UniProtKB/Swiss-Prot Function]