

Product datasheet for **MG216934**

Clmn (NM_001040682) Mouse Tagged ORF Clone

Product data:

Product Type:	Expression Plasmids
Product Name:	Clmn (NM_001040682) Mouse Tagged ORF Clone
Tag:	TurboGFP
Symbol:	Clmn
Synonyms:	9330188N17Rik; AI428889; AI788815; mKIAA1188
Mammalian Cell Selection:	Neomycin
Vector:	pCMV6-AC-GFP (PS100010)
E. coli Selection:	Ampicillin (100 ug/mL)
ORF Nucleotide Sequence:	>MG216934 representing NM_001040682 Red=Cloning site Blue=ORF Green=Tags(s)

TTTTGTAATACGACTCACTATAGGGCGGCCGGAATTCGTCGACTGGATCCGGTACCGAGGAGATCTGCC
GCC**CGATCGCC**

ATGGCTGCTCAGGAGTGGGACTGGTTCCAGCGCAGGAGCTCATCGGGCAGATCAGCGACATCCGTGTGC
AAAACCTGCAAGTGGAGAGGGAAAACGTGCAGAAGAGGACTTTCACACGATGGATAAACCTACACCTCGA
AAAGTGTGACCCACCTCTAGAAGTTACGGACCTGTTTGTGATATTCAAGATGGCAAATCCTAATGGCT
CTGTTAGAAGTCCTCTGGGCGAAATCTGCTGCATGAATACAAATCCTCATCACATCGTATTTTTCGGT
TGAACAACATAGCGAAAGCACTCAAGTTTCTGGAAGATAGCAATGTCAAGCTGGTTAGCATCGATGCAGC
GGAATAGCGGACGGCAACCCCTCGCTGGTTCTCGGGCTGATATGGAACATCATTCTCTTCCAGATA
AAGGAGCTCACGGCAACCTCAGCAGGAGTTCTCCATCTTCCAGCTTGTCAACCGGCTCTGGGGCACCG
ACTCCGACTCTTCTACCCACCCACCCACCAGAGAGGAGTGTGGCAGTGGCAGTGAAAGACCAGAG
GAAGGCCATCAAGACCCTGCTGTCATGGGTGCAGAGGAAAACCAGGAAGTATGGTGTGGCAGTCCAAGAC
TTTGCAGGCAGCTGGAGGAGTGGCTGGCTTCTGGCTGTCAAAAGCTATTGACCCAGCCTTGTAG
ACATGAAGCAGGCTCTGGAAGATTCCACCCGGGACAATCTGAAAAGGCCTTCAGATTGCCATGATTC
CCTGCATATCCCAGGCTCCTGGAGCCGGAAGACATCATGGTTGACATGCCAGATGAGCAGTCCATTGTG
ACATACGTGGCCAGTTTCTAGAGCGCTTCCAGAGTTGGAGCCTGAAGATTTTGTGAATCCGGACAAAG
AAGCCCCATCGAGTCCACCTTGTCCGATCAAAGAAAAGCCCTCTGAGCAGGGGAGCAGAGTCCCTCCT
CCTCAGCGAGAACGGAGAGCGGGCTACTGTCAACCAGGAAAACCAGCTACCCGCCCTGACAAGGTC
TTCGTCTGTGACCAGCTTGTGAGTCCGACTGGCTTCTGTCTGGATAGTGCTCCAGCCACAACTGTGAG
ACAGCTCCACAGAGTTTATGCATGAGATTATTGACCAAGTCCAGGGGAGCACGGGGAAGACTGGCTC
CATCGCAGAGCCAACTCCAGAGTCGTCATTTTGTCAACCAGAAAAGGACGGCAGGAGGTCCAACCTTTG
CCTGTCAAGAAAACCGTCCACTTCGAGGCAGACTTGCACAAGGATGCCTCGTGTAGTAAGGACCCCTTCT
ATAGCTGACTTCCGCTTCGAGGGGAGCCCCAAGGCAACCAAGGAGCTGTCAAAGCAGGACGGCCATGT
CTCACTGGCTGAGGTGTCCAAGGAAAAGAAGTCAAGAACAGGAAGCCAGGCTAGTGTGGAAGCTGCC



[View online >](#)

TCAGACAAGGTCCTCCGAAAGCACGGTCGATGGTCTGGATGCTGTGCCCAAGATGCTCAGCCTTCCCAGG
 ACTCCTCCTTCTGTAACGGCACTGTAGAGAGCCCATCCAGCCAAGGTGAGAAAGGCCCTCCTCCATCATC
 CCCTGGAGATCATACTCTCTGGCACTCCACTGAGCTCAAGGTTACAGTGTGACCGTTGAGCCTATG
 GACAAGGAAGACTACTTTGAATGCATCCCACTAAAAGCTTCAAAGTTAACAGGGACCTAGTGGATTTG
 CCTCCACCAGCCAGGCTTTTGGTGGAGTCTTTCGTCCCACGAGAAGACCCGTGGGGAGGAAGAGGGTTC
 TGAAATCACGCTGAGAAACCAGGAAAAGGAAATCAAAGTCTCCCGTCGAGAAAACAGAGGCCCGCGAG
 TCCAGATTGGAGCCCAAGAAGCTCGAGCCTCTCCCAAGGATCCCGAACAAGAAGCAAGGCCACGCTT
 TGCCCCCGGAAACCCCTGCAGACAAAAAGCCAAAGTGTATGAAAAGGCCAAGAGAAAGTCCACTCGTCA
 TCACAGCGAGGAAGAAGGAGAAGCAGAAAAGTGGCTTCTCTGCAGTCTGTGAAAGAAGAAATACCATCCGC
 CCTCCCAGCACCAGCGTCAGCCTGGAAACCCTCAGGAGTCACAGCGAAGAAGGTTTGGATTTCAAACCTT
 CGCCGCCGCTCTCGAAGATCTCTGTCTATCCCCACGACCTGTTCTACTACCCTCACTACGAAGTGCCCT
 GGCCGCTGTGCTGGAGGCTTACGCGGAAGGCGGGGAGGATTTGAAAAGTGAAGACACAGACCTAGAGCAT
 CCAGAGGACAGCTATCTGCAGGACTCCAGGGAGGAGGAGCCGACGAGGACGAGGAGGAGGCCAGAGCT
 CTAAGCAGCTGCAGTTTCTCCTTGCCTGTTGACAACAGCTACCCAGCGTCAGTGAGCATGTGTCCCA
 TGTCGATGGGAGTCTGAGGGACCCACGTCAGCCTTGGGACCTGGCTCTCCACCCTCTCATGAGGACCAC
 CAGCCAAAGGAAACCAAGAGAAATGGCCCTGTGGAAGGCCAGCAGTCCCAAGAACCCCAAAACCCGGAAC
 TGCCACAAAGCCATTAGAAGAAAAGTTAACGGAAGCCTCAACTAGCAGTAAAAAGAAGGAAAAACGGAA
 ACACATGGACCACGTAGAAAGCTCATTATTTATAGCCCTGGGACGGTCCGCTCCTCAGACGACCTTGA
 GAAAATCCAGCGAACACAAGGTCCTTCCAGGAATAGTCACAGTGACTCCAGCATTTACATTGGCGAC
 AACTAATAGGCTTTTGGAAATGGACATTTTAGCTATGTTCAATTGAGGAACGCAGCTGATCTGGATGA
 CAGGAGAAACAGAGTGTTAAACAGGACTGGCACAACCTCTGAGAGAAGCTGTGCCCTGGGAACCCAG
 AGCCCGCCCAACGACTCTCTGACGAGTTGTACAGCAGCCGACGATATATTTTATTCTCTTCTCTCT
 GGCTCTCGTTTACTGCTTACTGCTCTTCCACAGCTTGTATGTCAGCCGGCTC

ACGCGTACGCGGCCGCTCGAG - GFP Tag - GTTTAA

Protein Sequence:

>MG216934 representing NM_001040682
 Red=Cloning site Green=Tags(s)

MAAQEWDWFQREELIGQISDIRVQNLQVERENVQKRTFTRWINLHLEKCDPPLEVTDLFVDIQDGKILMA
 LLEVLSGRNLLHEYKSSSHRIFRLNNIKALKFLEDSNVKLVSIDAAEIADGNPSLVLGLIWNIIILFFQI
 KELTGNLRSRSPSSSLSPGSGTDSYPPPTTTERSVAVAVKDQRKAIKTLLSWVQRKTRKYGVAVQD
 FAGSWRSLAFLAVIKAIDPSLVDMKQALEDSTRDNLKAFSIAHDSLHPRLLPEPIMVDMPEQSI
 TYVAQFLERFPELEPEDFVNPDKAPIESTFVRIKESPEQGSRVLLLSENGERAYTVNQETSYP
 PPKDV FVCDQLESPTGFCLDSAPSHKLSDSSTEFMHEIIDQVLQGSTGKTGSIAEPTPESSILSTRKDGRRNSL
 PVKKTVHFEADLHKDASCSDPFYSSDFRFEKSPKATKELSKQDGHVSLAEVSKEKKKSEQEARLVLEAA
 SDKVPESTVDGLDAVPQDAQPSQDSSFCNGTVESSQGEKGGPPSSPGDHTLLANSTELKVQLLTV
 EPM DKEDYFECIPLKASKFNRLVDFASTSQAFGEDPSSHEKTRGEEEGSENHAEKPKRKS
 SPRAETAAE SRLEPKKLEPPPKDPEQEDQGHALPPETPADKKPKVYEKAKRKSTRHHSEEEGE
 AESGFSAVCEEEIPSA PPSTVSLETLRSHSEGLDFKPSPLSKISVIPHDLFYYPHYE
 VPLAAVLEAYAEAGGEDLKSEDTLEH PEDSYLQDSREEEADEDEEEAQSQSSCSFSLP
 VDNSYPSVSEHVSHVDSSEGPTSALGPGSPSHEDH QPKETKENGVPESQSQEPPNPEL
 PTKPLEEKLTEASTSSKKKEKRMHMDHVESLFIAPGTVRSDLE ENSSEHKVPSRNSHSD
 SSIYIRRHTNRSLELDHFSYVQLRNAADLDRRNRVLRNRTGNTSSGEAVPLGNQ
 SPPNDSL TQFVQQPDVIYFILFLWLLVYCLLLFPQLDVSRL

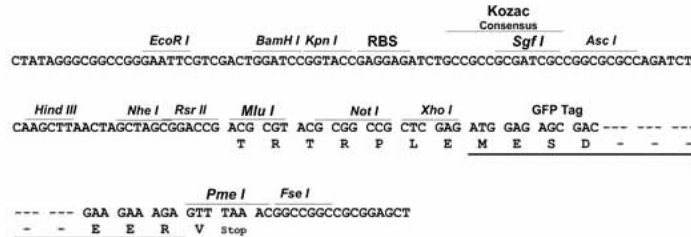
TRTRPLE - GFP Tag - V

Restriction Sites:

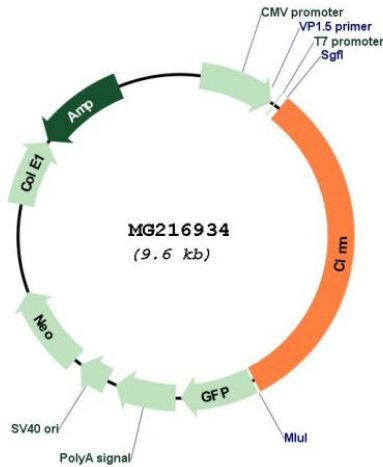
Sgfl-MluI

Cloning Scheme:

Cloning sites used for ORF Shutting:



Plasmid Map:



ACCN: NM_001040682

ORF Size: 3063 bp

OTI Disclaimer: The molecular sequence of this clone aligns with the gene accession number as a point of reference only. However, individual transcript sequences of the same gene can differ through naturally occurring variations (e.g. polymorphisms), each with its own valid existence. This clone is substantially in agreement with the reference, but a complete review of all prevailing variants is recommended prior to use. [More info](#)

OTI Annotation:	This clone was engineered to express the complete ORF with an expression tag. Expression varies depending on the nature of the gene.
Components:	The ORF clone is ion-exchange column purified and shipped in a 2D barcoded Matrix tube containing 10ug of transfection-ready, dried plasmid DNA (reconstitute with 100 ul of water).
Reconstitution Method:	<ol style="list-style-type: none">1. Centrifuge at 5,000xg for 5min.2. Carefully open the tube and add 100ul of sterile water to dissolve the DNA.3. Close the tube and incubate for 10 minutes at room temperature.4. Briefly vortex the tube and then do a quick spin (less than 5000xg) to concentrate the liquid at the bottom.5. Store the suspended plasmid at -20°C. The DNA is stable for at least one year from date of shipping when stored at -20°C.
RefSeq:	<u>NM_001040682.1</u> , <u>NP_001035772.1</u>
RefSeq Size:	11869 bp
RefSeq ORF:	3066 bp
Locus ID:	94040
UniProt ID:	<u>Q8C5W0</u>
Cytogenetics:	12 E