

Product datasheet for **MG216915**

Sytl2 (NM_001040088) Mouse Tagged ORF Clone

Product data:

Product Type:	Expression Plasmids
Product Name:	Sytl2 (NM_001040088) Mouse Tagged ORF Clone
Tag:	TurboGFP
Symbol:	Sytl2
Synonyms:	A1266830; mKIAA1597; SIp2
Mammalian Cell Selection:	Neomycin
Vector:	pCMV6-AC-GFP (PS100010)
E. coli Selection:	Ampicillin (100 ug/mL)



[View online »](#)

ORF Nucleotide
Sequence:

>MG216915 representing NM_001040088
Red=Cloning site Blue=ORF Green=Tags(s)

TTTTGTAATACGACTCACTATAGGGCGGCCGGAATTCGTCGACTGGATCCGGTACCGAGGAGATCTGCC
GCCCGCATCGCC

ATGATCGACTTAAGTTTCTGACAGAGGAGGAGCAAGACGCCATCTTAAGGTTCTGCAGAGGGATGCTG
CCCTGAAGAGGGCTGAAGAGGAGAGAGTCAACATCTGCCTGAAAAAATTAAGGATGACCAACAATAAA
GAATATGAGTGGCCAATGGTTTTATGAAGCTAAGGCAAAAAGACACAGGGACAAAATCCACGGTGTGAC
ATCATCAGAGCATCCATGAGAAGGAAGAAGCTCCAGCGGCAGCTGAGCAGAATAAGGACACAGCAATGA
GGGCAAAGGAGAGCTGGGTGAATAATGTTAACAAAGATGCTGTCTTCTCCAGAGATAGCTGTTGTGGA
AGAGCCAGAAGATGACACAGATCCCGCAGGCCAAAGTCCAGTTTGGTGGATCCAGCTTCCAGTGTGATT
GATATGTCCAGAAAGTACGAGGACTCCAGCTGTGTCTCTGCCAAGCAAAGGAAGAATCCATTCAACA
GCCCAAGCTGCCGAAGATCACTCCTTGCAACAAACCAACCCGAGCAGTCAAAAAGTGGAAAAGCTGG
TTTATTTAGATTTCAAAGAGGGTGTGTTGTGCAAGTCAAAGAAAAGTCACTATCCAGATATGCCA
CGTCAGCAGTTAGAGAAACCAAAGCAAACCTGTATCCACAGAGCCTGAAAAATGCGTCTCATACCAAAGCTC
CAATCCCCAAAGCCAGAAAACCTGATCTACAAATCAAATGACTTAGAGAAAAGATGATAACCAAGTCTTTTCC
CAGACAACGGAGGGACTCCCTGAATGCGAGAGGGGCTCCAAGAGGGATCCATAAGCGCAACTCCAGTTCC
AGCAGCACGGACTCAGAGACCCTCCGTTTAAATTAACAACCTTGATCCGAAAAGCAAAAATCCTATCACCTG
GCCTAACCATCCACGAGAGAATCTCTGAGAAGGAATTTCTTTAGAAAGCAGACTCTTCCACAAGCTCACT
AGAGCCGTTAAGCACGTGAGATTCTCTGCCGTGAAGAATGAGCTTCCACAAAGTCTAGACCCGTCCTT
GGCCAGGAAGTGGGAGAAATTTACTGTTTGAATCTGACCAGTTGCAAAAAGTGAAGTGAAGTGCAGGGG
ACATAGAGGAGTTTCAAGTACCCAGAGCTCTCCACAAAACACCTTTGTCTCATTATCAGTTAGTGTC
AAGCCCAAGCGATTCAGGAAGGGAAAGAGAACAGCTGATGTCTTCTGGGTCTGCTCAAGAGATGAGATC
CCTTGTCATTAGACATTCTACCCACAGACCTCAGTGTGTTGAGAGTTCATCCGTCATCAATGGGAAC
AAGAGAAATCATCACATTTTACAAAGCTTCCATCAGAATTGTCCAAAAGCCCTTCCGATGAACTGACTCA
GTGTGGTGTGAGCCTGAGCCATCACAGACAGCAGACCACAGTTTTAGAGACCATCGGCAAGGTTCAGAAGAA
GAGCACAGCCCTGTTTTGAAAACCTTGGAAAGAAGAGCTGCTAGGAAATGCTTCCAAAAGTCTAGAAG
ACATTCATCAGATTCATCAAATCAAGCAAAAGTAGATAATCTGCCTGAAGAATTAGTGCATGAGTGTGA
AGATGATCAAAAAGCCGACCAAGAACCAGATACAAATGAATGTATACCAGGAATTTCCACAGTGCCTTCA
CTGCCTGATAATCAGTTTTCCACCCCTGACAAACTCAAAGGATGAGCAAGTCCGTGCCAGCATTCTTTC
AAGATGAGGCGAGTGGCAGTGTGATGAGCGTTTACAGTGGAGACTTTGGCAACCTAGAAGTGAAGGAAG
CGTGACGTTTGCCTCGACTACGTGGAGTCCCTGAAAGAGCTGCATGTGTTTGTGGCCAGTGTAAAGGAT
TTAGCAGCAGCAGATGTTAAGAAACAGCGCTCAGATCCGTATGTAAGACCTATCTGCTACCAGACAAAAG
GCAAAAATGGGCAAGAAGAAGACACTCGTAGTGAAGAAGACCTTGAATCCTGTATACAACGAGATATTGCG
GTATAAAATGAAAGGCAATCTTAAAGACGCAGAAGTTGAACCTGTCCGTTTGGCATCGGGATACATTT
AAGCGCAACAGCTTTCTGGGGGAGGTGGAGCTCGACCTGGAAACGTGGGATTGGGACAGCAAAACAGAA
AACAGCTGAAGTGGTACCACTGAAGAGGAAGACAGCACCAGTTGCCCTCGAGACAGAAAACAGAGGTGA
AATGAAACTAGCTCTCCAGTATGTTCCGGAACCAAGCCCTGGCAAAAAGCTTCTACAACCTGGAGAAGT
CACATCTGGGTGAAGGAATGCCTTGACCTCCCACTGTTGAGGGGACGCCACCTAAATCTTTTGTAAAT
GTACCATCCTTCCAGATACCAGTAGAAAAAGTCCGCAAGACAAGAGCTGTAGGAAAACCAACCAACCC
CGTCTTCAACCATACCATGGTGTATGATGGGTTGAGGCTGAAGATCTGATGGAAGCCTGTGTAGAACTC
ACAGTCTGGGACCATTATAAACTAACCAACCAAGTTTCTGGGAGGTCTCCGGATCGGCTTTGGAACAGGAA
AAAGCTACGGGACTGAAGTGGATTGGATGGATTCTACTTCTGAGGAAGTTGCTCTCTGGGAGAAGATGGT
AAACTCTCCCAACTTGGGTTGAAGCGACGCTGCCCTCCGGATGCTTCTGATTGCCAAGCTTTCCAAG

ACGCGTACGCGGCCGCTCGAG - GFP Tag - GTTTAA

Protein Sequence: >MG216915 representing NM_001040088
 Red=Cloning site Green=Tags(s)

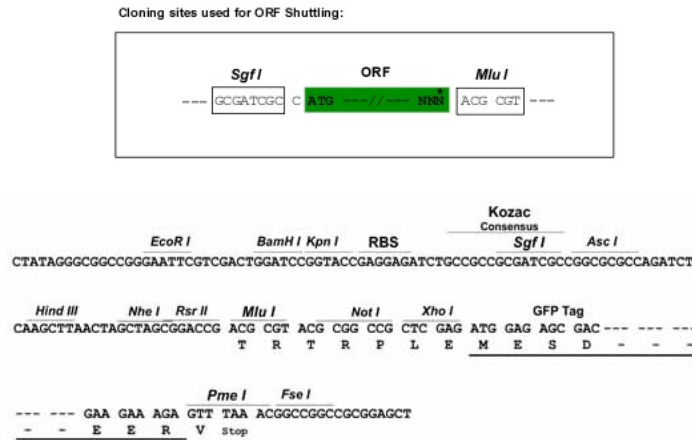
MIDL SFL TEEEQDA I LKVLQRDAALKRAEEERVH LPEKIKDDQQLKNMSGQWFYEAKAKRHRDKIHGAD
 IIRASMRKRLPAAAEQNKDTAMRAKESWVNNVNDKAVLPPEIAVVEEPEDDTPAGPSSSLVDPASSVI
 DMSQESTRTPAVSLPKQRKNPFNSPKLPEDHSLQQTKEQSKTGKAGLFQISKEGELSESKEKSSIPDMP
 RQQLLEKPKQTVSTEPENASHTKAPIPKARKLIYKSNLEKDDNQSFPRQRDSL NARGAPRGILKRNSSS
 SSTDSETLRLNLYNLDPKSKILSPGLTIHERISEKEFSLEDDSSSLEPLKHVRFSAVKNELPQSPRPVL
 GQEVGEFTVLESQQLQNGTEDAGDIEEFQNHPELSHKTPLSHYQLVSSPDSGREREQLMSSGSAPRDEI
 PCHSDILPTGPQCVESSSVINGQQEKSSHFTKLPSSELSKSPSDEL TQCGEPEPSQTADHSFRDHRQGSEE
 EHSPVLKTLERRAARKLPSKSLEDIPSDSSNQAKVDNLPEELVRS AEDDQKADQEPDTNECIPGISTVPS
 LPDNQFSPDKLKRMSKSVPAFLQDEASGSVMVSYSGDFGNLEVKGSVQFALDYVESLKELVHVAQCKD
 LAAADVKKQRSDPYVKT YLLPDKGKMGKKKTLVVKKTLNVPVYNEILRYKIERQFLKTQKLNLSVWHRDTF
 KRNSFLGEVELDLETWDWDSKQNKQLKWYPLKRKTAPVALETENR GEMKLALQYVPEPSGKKLPTTGEV
 HIWVKECLDPLLRGSHLNSFVKCTILPDTSRKSRQKTRAVGKTTNPVFNHTMVYDGF RPEDLMEACVEL
 TVWDHYKLTNQFLGGLRIGFGTGKSYGTEVDWMDSTSEEVALWEKMNVPNTWVEATLPLRMLLI AKLSK

TRTRPLE - GFP Tag - V

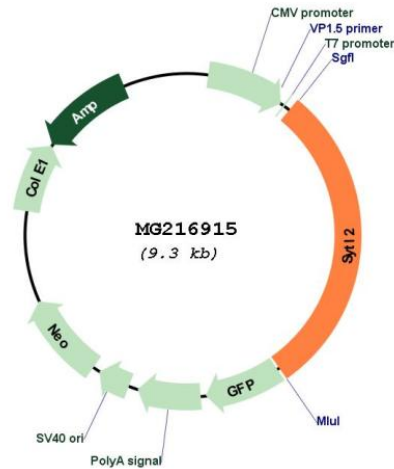
Restriction Sites:

SgfI-MluI

Cloning Scheme:



Plasmid Map:



ACCN: NM_001040088

ORF Size: 1008 bp

OTI Disclaimer: The molecular sequence of this clone aligns with the gene accession number as a point of reference only. However, individual transcript sequences of the same gene can differ through naturally occurring variations (e.g. polymorphisms), each with its own valid existence. This clone is substantially in agreement with the reference, but a complete review of all prevailing variants is recommended prior to use. [More info](#)

OTI Annotation: This clone was engineered to express the complete ORF with an expression tag. Expression varies depending on the nature of the gene.

Components: The ORF clone is ion-exchange column purified and shipped in a 2D barcoded Matrix tube containing 10ug of transfection-ready, dried plasmid DNA (reconstitute with 100 ul of water).

Reconstitution Method:

1. Centrifuge at 5,000xg for 5min.
2. Carefully open the tube and add 100ul of sterile water to dissolve the DNA.
3. Close the tube and incubate for 10 minutes at room temperature.
4. Briefly vortex the tube and then do a quick spin (less than 5000xg) to concentrate the liquid at the bottom.
5. Store the suspended plasmid at -20°C. The DNA is stable for at least one year from date of shipping when stored at -20°C.

RefSeq: [NM_001040088.1](#), [NP_001035177.1](#)

RefSeq Size: 2586 bp

RefSeq ORF: 1011 bp

Locus ID: 83671

UniProt ID: [Q99N50](#)

Cytogenetics: 7 E1

Gene Summary:

Isoform 11 acts as a RAB27A effector protein and plays a role in cytotoxic granule exocytosis in lymphocytes. Required for cytotoxic granule docking at the immunologic synapse. Isoform 1 may play a role in melanosome transport and vesicle trafficking. It controls melanosome distribution in the cell periphery and regulates melanocyte morphology. Isoform 1 acts as a positive mediator of mucus secretion by the surface mucus cells of the stomach. Mediates basal mucus secretion by gastric surface cells by promoting the proper granule biogenesis and docking of mucus granules with the apical plasma membrane.[UniProtKB/Swiss-Prot Function]