

## Product datasheet for **MG216900**

### **Fbxl13 (NM\_177076) Mouse Tagged ORF Clone**

#### **Product data:**

<b>Product Type:</b>	Expression Plasmids
<b>Tag:</b>	TurboGFP
<b>Symbol:</b>	Fbxl13
<b>Synonyms:</b>	4921539K22Rik
<b>Mammalian Cell Selection:</b>	Neomycin
<b>Vector:</b>	pCMV6-AC-GFP (PS100010)
<b>E. coli Selection:</b>	Ampicillin (100 ug/mL)



ORF Nucleotide Sequence: >MG216900 representing NM\_177076  
Red=Cloning site Blue=ORF Green=Tags(s)

TTTTGTAATACGACTCACTATAGGGCGCCGGGAATTCGTGCGACTGGATCCGGTACCGAGGAGATCTGCC  
GCCGCGATCGCC

ATGGCTTCACTACGCAGTGCCACCCCCAGGCTAAGGAGCTACTTCAGGGACAAGTACATTCCTCAATCT  
GTGAGGCGCTGTTATGTGGTTACTTGTGACATGTCCTGAGGACCCACTGAAATATTTAGAGCACATGAT  
CCTAGCTATCATAAAAAGAGGTCTGGAAAACCTTCTTTGGGACACGTGCATCCATCCACTGAAGTCA  
AGAGTTCGAAGACTGTCTGAACTTACTTGGATGAACTTTTTGGACTGGATGACCAGCTGGTGAATCCAG  
AGTTGATGATAAAGCATGCACATTTTACTGGACATTTAGTAAAGACACATTTCACTGGTTGGAAAAA  
AGTTGCAATACCTCGTGCAAAATCAAGAGGAGATCATGGCTGAAAAAATGGACAAGGCAATAGCACATGAC  
AATTTTAGATGCCAAAAATACATTTTAAATCGCTGGTTCGCCTACACGGTTATGAGTAGAGAAAAGACTTA  
TAACTACACTGCTTCGGTTCGACATTTGTTCTATATGCAAAGACAAGAATTATACTAGCAAAAATGGAA  
GGAGAGAGCCAGACACAAGAGTAAAAACAAGAGAAGACGACTTGATTTCAAACATGAACTTCAGTTGAAA  
AAATGGAAAGTTCAAGTTAGGGAAGCCGATTAGCCTTGAGGGGAGCCTCTCTGACATCGCTGTTGAGAACA  
GGCGCATAGCATTTGACATTTCACTGCTACCGGAGCAAGCAATACTCCAGATTTTCTGTACCTCACCTT  
TAAAGACATGATGGCGTGCAGTCAACCGCTCCTGGATGGCGATGATTCAGAGAGGCTCCTTGTGG  
AACTCTATTGATTTTCCACAGTAAAAACATTGCAGATAAATGTGTGGTGACCACTTACAAAAGTGGC  
GGCTAAACGTGCTGCGTTTAACTTCCGAGGCTGCGACTTCCGAACAAAAACCTTGAAGCTGTCAGCCA  
CTGTAAAAAATTGCAAGAGTTGAACGCTCTGACTGCCAGTCTTTCACAGATGAATCCATGAGGCACATT  
TCTGAGGGCTGCTCGGGTCTGTATCTCAATCTATCCAACACAACCATCACCAACAGGACCATGCGAC  
TCCTACCCAGTACTTCCACAACCTACAGAACCTCAGTCTGGCTTACTGCCGAAAGTTCACCGACAAAGG  
CTTACAGTACTGAACTTGGGGAACGGATGCCACAAGCTCATCTATCTGGACCTTCCGGCTGCACCCAG  
GTTTTGGTTGAGAAGTGTCCCGTATTTTCGTGCGTGGTTTTAATTGGTTCACCACACATCTCTGACTCTG  
CTTTCAAAGCTCTTTCCTCCTGCGACCTCAAAAAGATTCGATTTGAAGGAAACAAAAGGATTTCTGATGC  
GTGCTTTAAGTCGATAGACAGGAATTATCCAGGCATCAATCACATTTACATGGTGGACTGCAAAAGGGCTA  
ACAGACAGCAGCCTCAAGTCACTTTCACTTTTGAAGCAATTGACAGTGTGAACTTGACAAATTCATAA  
GGATTGGTGATATCGGCCTGAAGCATTTTTTTGATGGTCTGCGAGTATCAGGCTAAGAGAGCTCAATTT  
GACTAACTGCTCACTGCTGGGCGATTCTCTGTCATCAGACTGTCAGAGCGTTCGCCAATTTACTACTAC  
TTGAATTTACGAAATTGTGAACATCTGACTGACTTGGAATTTGAATATATTGCAAGCATGTTATCCTTGA  
TATCAGTAGATCTTCTGGAACACTCATCTCAAATGAGGGCATGACCATACTTCCAGACACAGAAAACCT  
GAGGGAAGTTTCTGTGCTGACTGTGTCAACATCACTGACTTTGGAATTCGGGCATACTGCAAAAACCTCG  
CTGTTGTTGGAACACTTGAGCTCTCCTACTGCTCCCAACTGACAGATGACATCATAAAGACTATAGCCA  
TTTTCTGACTCGAATTACATCTCTTAACATCGCTGGATGCCAAAAGATTACCGATGCAGGGATGGAGAT  
ATTATCTGCAAGGTGCCATTATCTGCACATTTTGGATATCTCTGGCTGTATCCAACCTTACAGACCAGATC  
ATTCAGGACCTTCAAATAGGCTGCAAAACAACCTCCGGATCCTCAAGATGCAATTCGCAAGTCCATCTCTC  
CGGCAGCGCTCAGAAAATGTCCTCTGTGGTCCAGCATCAGGAATACAACCTCCGACAACCTCCACATTG  
GTTTGGCTACGACTCTGAAGGCAACCTCTTGACAAGATTCATAGTCGAGTACAACCTAGAATTTACTCA  
AAACTGATAGTCAAAGGCCATTGACATCGACGAGGAGGATCCAGACTCCAAACACCAA

ACGCGTACGCGGCCGCTCGAG - GFP Tag - GTTTAA

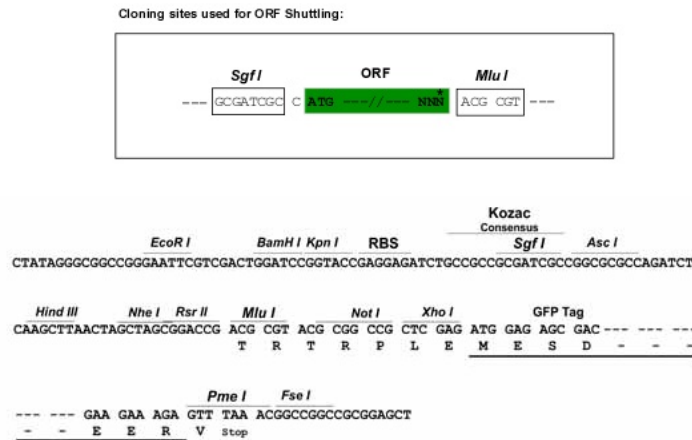
**Protein Sequence:** >MG216900 representing NM\_177076  
 Red=Cloning site Green=Tags(s)

MASLRSATPRLRSYFRDKYIPQICEALLCGLLVTCPEPLKYLEHMILAIKRGLLENLLWDTCIHPSLKS  
 RVRRLSEYLDLDELFLGDDQLVPELMIKACTFYTGHLVKTHFSGWKKVAIPRANQEEI MAEKMDKAI AHD  
 NFRQCQKYIFNRWFAYTVMSRERLITLLRLRHLFYMQRQRIILAKWKERARHKSKTREDDLISKHELQLK  
 KWKFKLGKPI SLEGLSDIAVENRRIA FDISVLPEQAILQIFLYLTFKDMMACSRVNRSWMAMIQRGSLW  
 NSIDFSTVKNIADKCVVTTLQKWRLNVLRLNFRGCDFRKTLKAVSHCKNLQELNVSDCQSF TDESMRHI  
 SEGCPGVLYLNLSTTTITNRTMRLLPYFHNLQNL SLAYCRKFTDKGLQVNLNGGCHKLIYDLDSGCTQ  
 VLVEKCPRISSVVLIGSPHISDSAFKALSSCDLKKIRFEGNKRISDACFKSIDRNYPGINHIYMVDCKGL  
 TDSSLSKLSLLKQLTVLNLNCRIRIGDIGLKHFFDGPASIRLRELNLNCSLLGDSSVIRL SERCPNLHY  
 LNLRNCEHLTDLAIEYIASMLSLISVDLSGTLISNEGMTILSRHRKLREVSVSDCVNITDFGIRAYCKTS  
 LLLLEHLDVSYCSQLTDDIIKTI AIFCTRITSLNIAGCPKITDAGMEILSARCHYLHILDISGCIQLTDQI  
 IQDLQIGCKQLRILKMQFCKSISPAAAQKMSSVQHQEYNSDNPPHWFQYDSEGNPLDKIHSRVQLRTYS  
 KLIVKEPFSIDEEDPDSKHQ

TRTRPLE - GFP Tag - V

**Restriction Sites:** SgfI-MluI

**Cloning Scheme:**



**ACCN:** NM\_177076

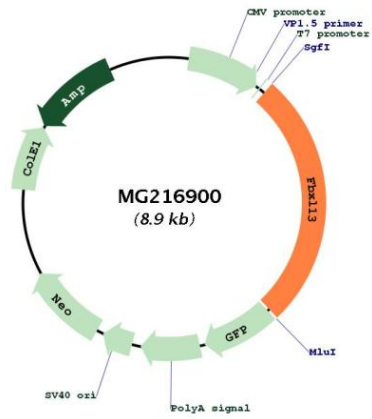
**ORF Size:** 2370 bp

**OTI Disclaimer:** The molecular sequence of this clone aligns with the gene accession number as a point of reference only. However, individual transcript sequences of the same gene can differ through naturally occurring variations (e.g. polymorphisms), each with its own valid existence. This clone is substantially in agreement with the reference, but a complete review of all prevailing variants is recommended prior to use. [More info](#)

**OTI Annotation:** This clone was engineered to express the complete ORF with an expression tag. Expression varies depending on the nature of the gene.

<b>Components:</b>	The ORF clone is ion-exchange column purified and shipped in a 2D barcoded Matrix tube containing 10ug of transfection-ready, dried plasmid DNA (reconstitute with 100 ul of water).
<b>Reconstitution Method:</b>	<ol style="list-style-type: none"><li>1. Centrifuge at 5,000xg for 5min.</li><li>2. Carefully open the tube and add 100ul of sterile water to dissolve the DNA.</li><li>3. Close the tube and incubate for 10 minutes at room temperature.</li><li>4. Briefly vortex the tube and then do a quick spin (less than 5000xg) to concentrate the liquid at the bottom.</li><li>5. Store the suspended plasmid at -20°C. The DNA is stable for at least one year from date of shipping when stored at -20°C.</li></ol>
<b>Note:</b>	Plasmids are not sterile. For experiments where strict sterility is required, filtration with 0.22um filter is required.
<b>RefSeq:</b>	<a href="#">NM_177076.4</a> , <a href="#">NP_796050.2</a>
<b>RefSeq Size:</b>	2556 bp
<b>RefSeq ORF:</b>	2373 bp
<b>Locus ID:</b>	320118
<b>UniProt ID:</b>	<a href="#">Q8CDU4</a>
<b>Cytogenetics:</b>	5 A3
<b>Gene Summary:</b>	Component of the nexin-dynein regulatory complex (N-DRC), a key regulator of ciliary/flagellar motility which maintains the alignment and integrity of the distal axoneme and regulates microtubule sliding in motile axonemes. Substrate-recognition component of the SCF (SKP1-CUL1-F-box protein)-type E3 ubiquitin ligase complex.[UniProtKB/Swiss-Prot Function]

Product images:



Circular map for MG216900