

Product datasheet for **MG216898**

Phf7 (NM_027949) Mouse Tagged ORF Clone

Product data:

Product Type: Expression Plasmids
 Product Name: Phf7 (NM_027949) Mouse Tagged ORF Clone
 Tag: TurboGFP
 Symbol: Phf7
 Synonyms: 1700006H01Rik; 1700010P14Rik; AI427892; AW555949
 Mammalian Cell Selection: Neomycin
 Vector: pCMV6-AC-GFP (PS100010)
 E. coli Selection: Ampicillin (100 ug/mL)
 ORF Nucleotide Sequence: >MG216898 representing NM_027949
 Red=Cloning site Blue=ORF Green=Tags(s)

TTTTGTAATACGACTCACTATAGGGCGGCCGGAATTCGTCGACTGGATCCGGTACCGAGGAGATCTGCC
 GCC**CGATCGCC**

ATGAAGACTTTAAAAGAAAAAACAACATCCAAGATTGAGAAAACTATCAGGACTAAGAAGGTAACAC
 AGAGGAAGCTGTCTTCAAGTCTGTTTGCCTTCTATGCCTTCAAGAACCTGGTGATCCTGAAAACTAGG
 AGAATTTCTTCAGAAAGACAATCTTTGTGTCCATTATTTCTGTCTTATCCTGTCTAGCAGACTGCCTCAG
 AAGGGCAACCCAACAGAGGTCTCCATGGATTTATGCCTGAAGACATCAAAGGGAGGCAGTACGGGCTT
 CTAAGAAGATCTGCTTTGTATGCAAGAAAAAGGAGCTGCTATCAGATGCCAGAATGATCAGTGTGTCCA
 GAACTTCCATCTGCCTTGTGGCCAAGAAAGGGTTCCTTTTACAGTTTTTTGGAGAGTACAAATCATAT
 TGTAGAAAAATCGACCAACACAGAATCCACCAGGGGAGTTTGGGGGAGGAAAGCTGTGTCTTGTGTT
 GCGAAAAATTTATCCCGAACAAAGTGTGAGAACATCCAGAGCCCATGCTGTAGTCAAGCTATCTATCACCG
 CAAGTGTATCCAGAAATATGCCACACATCAGCAAAGCACTTCTTCAAGTGTCCCGAGTGAACAACCGA
 GAAGAGTTCACAGGAGATGCTGAGGATGGGGATCCACATCCCAGACAGAGATGCTGCCTGGGAACTCG
 AGCCAGGGGCTTCTCCGAGTTGTATCAGCGCTATCGGCATTGTGATGCCCCATCTGTCTGTATGAGCA
 AGGCAGAGACAGCTTTGAGGATGAAGGACGGTGGCGCCTCATTTTGTGTGCTACGTGTGGATCCCATGGA
 ACCCACCAGGACTGCTCCTCTTAGACCAACAGCAAGAAATGGGAATGTAATGAGTGTTCCTGCTT
 CAACCACGAGT

ACGCGTACGCGGCCGCTCGAG - GFP Tag - GTTTAA



[View online »](#)

Protein Sequence: >MG216898 representing NM_027949
 Red=Cloning site Green=Tags(s)

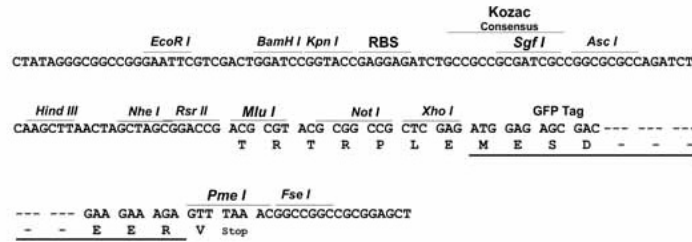
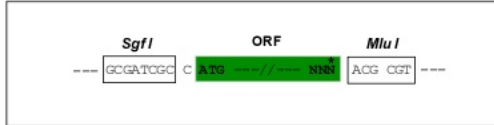
MKTLKEKNKHPRLRKTIRTKKVTQRKLS SSPVCLLCLQEPGDPEKLGFLQKDNLCVHYFCLILSSRLPQ
 KGQPNRGLHGFMPEDIKREAVRASKKICFVCKKKGAAIRCQNDQCVQNFHPCGQERGCLSQFFGEYKSY
 CRKHRPTQNIHQGSLGEESEVLCENL SRTSVENIQSPCCSQAIYHRKCIQKYAHTSAKHFFKCPQCNNR
 EEFPQEMLRMGIHIPDRDAAWELEPGAFSELYQRYRHCDAPICLYEQGRDSFEDEGRWRLILCATCGSHG
 THRDCCSLRPNSKKWECNECLPASTTS

TRTRPLE - GFP Tag - V

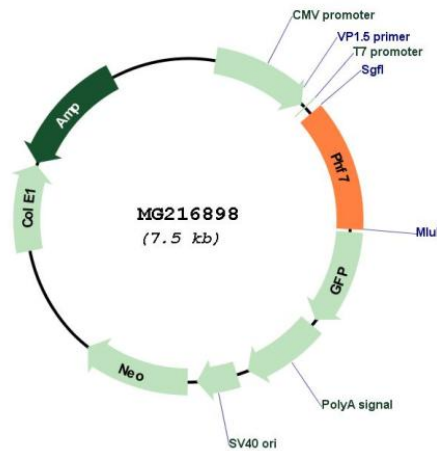
Restriction Sites: SgfI-MluI

Cloning Scheme:

Cloning sites used for ORF Shuttling:



Plasmid Map:



ACCN: NM_027949

ORF Size: 921 bp

OTI Disclaimer:	The molecular sequence of this clone aligns with the gene accession number as a point of reference only. However, individual transcript sequences of the same gene can differ through naturally occurring variations (e.g. polymorphisms), each with its own valid existence. This clone is substantially in agreement with the reference, but a complete review of all prevailing variants is recommended prior to use. More info
OTI Annotation:	This clone was engineered to express the complete ORF with an expression tag. Expression varies depending on the nature of the gene.
Components:	The ORF clone is ion-exchange column purified and shipped in a 2D barcoded Matrix tube containing 10ug of transfection-ready, dried plasmid DNA (reconstitute with 100 ul of water).
Reconstitution Method:	<ol style="list-style-type: none">1. Centrifuge at 5,000xg for 5min.2. Carefully open the tube and add 100ul of sterile water to dissolve the DNA.3. Close the tube and incubate for 10 minutes at room temperature.4. Briefly vortex the tube and then do a quick spin (less than 5000xg) to concentrate the liquid at the bottom.5. Store the suspended plasmid at -20°C. The DNA is stable for at least one year from date of shipping when stored at -20°C.
RefSeq:	NM_027949.2
RefSeq Size:	1984 bp
RefSeq ORF:	924 bp
Locus ID:	71838
UniProt ID:	Q9DAG9
Cytogenetics:	14 B
Gene Summary:	May play a role in spermatogenesis.[UniProtKB/Swiss-Prot Function]