

## Product datasheet for **MG216888**

### Med23 (NM\_001166416) Mouse Tagged ORF Clone

#### Product data:

**Product Type:** Expression Plasmids  
**Product Name:** Med23 (NM\_001166416) Mouse Tagged ORF Clone  
**Tag:** TurboGFP  
**Symbol:** Med23  
**Synonyms:** 130kDa; 3000002A17Rik; Crsp3; ESTM7; mKIAA1216; Sur2; X83317  
**Mammalian Cell Selection:** Neomycin  
**Vector:** pCMV6-AC-GFP (PS100010)  
**E. coli Selection:** Ampicillin (100 ug/mL)  
**ORF Nucleotide Sequence:** >MG216888 representing NM\_001166416  
Red=Cloning site Blue=ORF Green=Tags(s)

TTTTGTAATACGACTCACTATAGGGCGCCGGGAATTCGTCGACTGGATCCGGTACCGAGGAGATCTGCC  
GCC**CGATCGCC**

ATGGTACCGATGGAGACGCAACTGCAGAGCATTTTCGAGGAGGTGGTAAAAACAGAAATTATAGAAGAGG  
CCTTCCCAGGAATGTTTATGGATACCCCGAGGATGAAAAACAAAATAATTAGCTGCTTGGCGCCTT  
CCGGCAGTTTTGGAGTGGACTTTCTCAGGAGTCTCATGAACAGTGTGTTTCAGTGGATTGTTAAATTTATT  
CATGGCCAACACAGCCCCAAAAGAATTTCTTCCCTCTATGACTGCTTAGCAATGGCAGTTGAGACTGGTC  
TCCTTCCACCCAGGATGGTTTGTGAATCTTTGATAAACTCTGACTCTCTTGAATGGGAAAGAACACAGCT  
TTGGGCCTTAACATTTAAGCTGGTTCGGAAAATCATTGGAGGAGTGGATTACAAGGGTGTTCGAGACCTT  
CTCAAAGCGATTTTGGAGAAAATCTTGACAATCCCAAATACAGTGAAGCTCTGCTGTTGTCCAGCAGCTTC  
TGGCAGCAAGAGAGGTTATAGCTTATATCTTAGAACGAAATGCCTGCCTATTGCCGGCCTACTTTGCAGT  
CACAGAGATCAGAAAATATATCCTGAGGGAAAATCCACACTGGTTACTAGGAAAATTTGGTATCAGAC  
TTTGTGGATACCTTCAGGCCACAGCAAGGATTAATCCATTTGTGGCCGATGCAGTCTTCTGCCAGTTG  
TGAACAACTCGGGAGCCATCTGTAATCATGAAAATGGACCTGCAACTCTGCGATTTCTTTGAAAGG  
CCTTTTCCATATGATAAGGATCTGTTTGAACCGCAGACTGCTTTGTTGAGATATGACTGGAGCAACCT  
TATCCAGGGATATGGTCTGCAATATGCTAGTTTAAATAAGCAGACCTTGAACATTGCTCAGCACAAGC  
AGCGCTGCCCTGTGCTGGAGACCAGTTGGTGGACCTGGTGGTGTACGCCATGGAGAGGTCAGAGACCGA  
GGAGAAGTTTGCAGATGGGGAAACCAGCCAGCTCCTGTGGCAGCACCTTTCCAGCCAGCTCATTTTCTTT  
GTGCTTTTCCAGTTTCCAGTTTCCACATATGGTCTCTCTCCACCAGAAGTTAGCAGGGCGAGGAC  
TGATTAAGGGCGAGACCATCTGATGTGGGTGCTGCTGCAGTTTCTTCTGGAAGTATTCAGAAAAATGC  
CCTCGTACTTCTCCCTGTCTGAAGCTCTTTGACCTGCTGTACCCGGAGAAGGAGTGTATCCCAGTT  
CCTGATATTAACAAACCCAGTCAACGCACGCCTTTGCAATGACTTGTATTTGGATTATCTTAATAGAA  
AAGCTCAAATGGCGACTCCACGCTCCAGATCCCAATACCCATTCCCTGAAGCTGCACCATGAGTTCCT  
CCAGCAGAGTCTGAGAAATAAAGCTTACAGATGAATGACTATAAGATTGCCCTGCTATGTAACGCGTAT



[View online >](#)

TCCACAACTCAGAGTGTTCACGTTACCTATGGGAGCTCTGGTAGAACTATTTATGGAATGGAATTA  
TGAGAGTGCCCTCCCTGGAACGAGCTGTTTGGCCTCAGCATCAGTGACTCCCTACCGATGAACCTCCT  
GGATTCAGTGACGGTGCATGCCAAGATGAGCCTTATTCACAGCATTGCAACCAGAGTGATAAACTGGCT  
CATACGAAATCCAGTGTTCGCGTGGCTCCAGCCCTAGTGGAACTTACAGCCGTTTACTGGTCTACATGG  
AAATTGAGTCTTTGGGCATCAAAGGATTTATCAGTCAGCTCCTGCCACTGTCTCAAGTCCCACGCCTG  
GGGCATCCTGCACACACTGCTGGAGATGTTTCAGCCACCGAATGCACCACATTAGCCCACTACCGAGTT  
CAGTCCCTGAGCCATCTCCACACACTGGCTGCAGTCGACACAGACCAACCAGAACCAGCTCCATCTGTGTG  
TGGAGAGCACTGCAGTGGGCTCATCACAGCCCTGGGAAGCTCAGAGTCCAGCCGAGTTCACGGTTTT  
CCTCAATGATCCCAAAACAGTGCTGTCCGCCAATCTGAAGAGCTGAACCGAGCCTTGATCCTGACCTTA  
GCCAGAGCAACCCACGTACAGATTTTTTACAGGATCTGATTCAATACAGGAACTTGGTGAAAGATA  
TCCTTCAGACCATCATGAACTTTACTCCTATAACTGGGCTTCACATACCCTTAGCTGTTTTCCAGCCCC  
TCTGCAGGCTTTCTTCAAGCAAATAACGTGCCCAAGAAAGCCGTTTTAATCTGAAGAAGATGTGGAA  
GAAGAGTACAGGAAGTGAAGTCAATGACTGATGAAAACGAGATCATACCCAGTTCTCTGTGCAGGGCT  
TCCCTCCACTTCTCTGTCTCCTCTGGAAGATGCTCCTGGAGACGGATCATATTAGTCAGATCGGCTA  
CAAGGTCTGGAGAGATTGGGGCCAGGCCCTGGTGGCCATGTGAGAACATTTGCAGATTTCTGGTG  
TATGAGTTCTCTACGTACAGCAGGAGTACAGCAACTCAATAAGTGCAATTGAAATTCACACGACATGGTGT  
GGAAGTACAACATTGTCACGCTGGACAGACTCATTCTCTGCCTGGCTATGCGTAGTCATGAAGGAATGA  
AGCCCAGGTTTGTATTTATAATTGAGTTGCTGTTGCTCAAACCAAATGACTTCAGAAACCGAGTAAGT  
GACTTTGTGAAGGAGAATCCCCAGAGCACTGGCTCCAGAGTACTGGCACACCAAGCACATGAGCTACC  
ACAAGAAATATCCCGAGAAGCTGTATTTGAAGGCCTGGCAGAGCAGGTTGACCCCTGTACCAATCCA  
GTCCCCCTATCTGCCATCTACTTTGAAAATGTGTGCTCCGGTTCCTCCAGTATTTGATATAGTAATC  
CACAGGTTTTAGAGTTGCTTCCAGTGTCCAAATCACTAGAGACTCTCCTGGATCACCTAGGGGGCTTAT  
ATAAATCCATGACCGCCAGTACTTATCTGTATAACTTTGCACTATTATGAAATGTGCTGAGAAA  
CCGTGACCATCTCAAACGAAAACCTGTCCATGCAATCATTGGCTCCCTCAAAGATAACCGCCACAGGGC  
TGGTGTCTCAGTGATACCTACCTGAAGCATGCTATGAATGCACGGGAGGACAACCCTGGGTTCCGGAGG  
ACTCCTACTACTGCAAGCTGATTGGCCGACTGGTAGACACCATGGCGGGCAAGTCTCCAGGACCCTCCC  
AAACTGTGACTGGAGATTCAATGAGTTTCCAACCCCGCTGCCACGCTCTGCATGTGACGTGTGTGGAA  
CTCATGGCCTTGGCGGTTCCAGGCAAAGATGTGGGGAATGCCCTTCTCAATGTCGCTCTGAAAAGCCAGC  
CCTTAGTGCCAAAGGAGAACATTACAGCGTGGATGAATGCAATTTGGTCTGATCATCACGGCCCTCCAGA  
GCCGTAAGTGGATTGTGCTTCATGACCGAATTGTGAATGTGATCAGCAGTTCTAGCCTGACGTGAGAGACA  
GAGTGGGTCGGTTACCCGTTCCGCTCTTCGACTTCACCGCTTGTACCAGTCTACTCGGAGATGAGCT  
GCAGCTATACGTTAGCTTAGCCATGCCGTGTGGCACCCTCCAGCATCGGGCAGCTCTCGCTTATCCC  
AAAGTTTCTCACTGAGGCGCTTCTCCCGTGGTGAAGACTGAGTTCCAGTTGCTCTACGTGTACCATCTT  
GTGGGGCCATTTCTACAGAGGTTCCAACAGGAGAGAACCCTGGTGCATGATTGAGATTGGCGTGGCATT  
ATGACATGCTGTTGAATGTAGACCAGTGCAGCAGCACTTAAATACATGGACCCCATCTGCGACTTCT  
GTATCATATGAAGTATATGTTTACTGGTGACAGTGTGAAAAGAGCAAGTAGAGAAGATTATCTGTAATTTA  
AAGCCGGCTTTAAAGCTTCGCTTCGATTATCACGCACATTAGCAAGATGGAGCCGGCAGTGCCACCCC  
AGGCCCTCAACAGCGGGTCTCCAGCACCTCAGTCTAACAGGTGCCAGCATCTCTGCCGGTGACTCAG

AGCGGACCGACGCGTACGCGGCCGCTCGAG - GFP Tag - GTTTAA

**Protein Sequence:** >MG216888 representing NM\_001166416  
 Red=Cloning site Green=Tags(s)

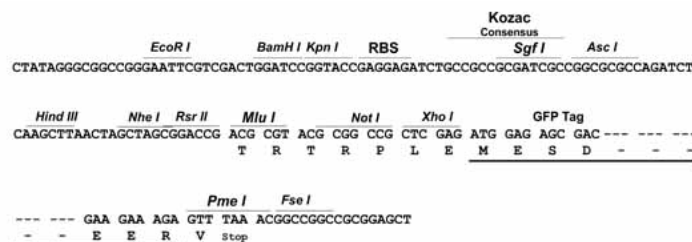
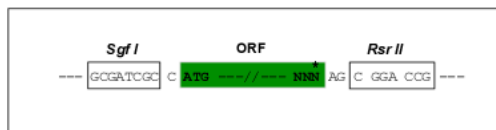
MVPMETQLQSIFEEVVKTEIIEEAFFPGMFMDTPEDEKTKLISCLAARQFWSGLSQESHEQCQVQWIVKFI  
 HGQHSPKRISFLYDCLAMAVETGLLPPRMVCELSINSDSLEWERTQLWALTFKLRKLIIGGVYKGVDRDL  
 LKAILEKILTIPTVSSAVVQQLLAAREVIAYILERNACLIPAYFAVTEIRKLYPEGKLPHWLLGNLVSD  
 FVDTRPTARINISICGRCSLLPVVNNSGAICNSWKLDPATLRFPLKGLLPYDKDLFEPQTALLRYVLEQP  
 YSRDMVCNMLGLENKQTLNIAQHKQRCPVLEDQLVDLVVYAMERSETEEFDDGGTSQLLWQHLSSQLIFF  
 VLFQFASFPHMVLSLHQKLAGRGLIKGRDHLMWVLLQFISGSIQKNALADFLPVMKLFDLLYPEKECIPV  
 PDINKPQSTHAFAMTCIWIHLNRKAQNGDSTLQIPIPHSLKLHHEFLQQSLRNKSLQMNDYKIALLCNAY  
 STNSECFITLPMGALVETIYNGIMRVPLPGTSCLASASVTPLPMNLLDSLTVHAKMSLIHSIATRVIKLA  
 HTKSSVALAPALVETYSRLLVYMEIESLGIKGFISQLLPTVFKSHAWGILHTLLEMFSHRMHHIQPHYRV  
 QLLSHLHTLAAVAQTNQNLHLCEVESTALRLITALGSSEVQPQFTRFLNDPKTVLSAESEELNRALILTL  
 ARATHVTDFFTGSDSIQGTWCKDILQTIMNFTPHNWAHTLSCFPAPLQAFFKQNNVPQESRNLKKNVE  
 EERYKWKSMTDENEIITQFSVQGFPPFLCCLLWKMLLETDHISQIGYKVLERIGARALVAHVRTFADFLV  
 YEFSTASAGGQQLNKCIETLNDMWKYNIVTLDRILCLAMRSHEGNEAQVCYFIIQLLLLKPNDFRNRVS  
 DFKENSPEHWLQSDWHTKMSYHKYPEKLYFEGLAEQVDPVPIQSPYLPYIFGNVCLRFLPVFDIVI  
 HRFLELLPVSKSLETLLDHLGGLYKFHDRPVTYLYNTLHYEMCLRNRDHLKRKLVAHAIIGSLKDNRPQG  
 WCLSDTYLKHAMNAREDNPWPEDSYCKLIGRLVDTMAGKSPGPFPCDWRNFEPNPAHALHVTCVE  
 LMAVAVPGKDVGNALLNVVLKSQPLVPRENITAWMNAIGLIITALPEPYIVLHDRVVNVISSSSLTSET  
 EWVGYPFRLDFDTACHQSYSEMCSYTLALAHAVWHSSIGQLSLIPKFLTEALLPVVKEQTEFQLLYVYHL  
 VGPFLQRFQQRTRCMIEIGVAFYDMLLNVDQCSTHLNMDPICDFLYHMKYMF TGD SVKEQVEKII CNL  
 KPALKLRFRFITHISKMEPAVPPQALNSGSPAPQSNQVPASLPVTQ

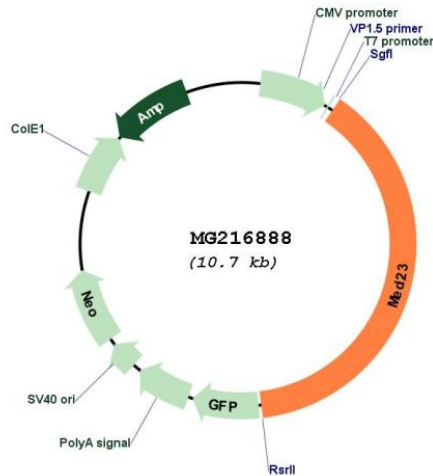
SGPTRRRLE - GFP Tag - V

**Restriction Sites:** SgfI-RsrII

**Cloning Scheme:**

Cloning sites used for ORF Shuttling:



**Plasmid Map:**


**ACCN:** NM\_001166416

**ORF Size:** 4128 bp

**OTI Disclaimer:** The molecular sequence of this clone aligns with the gene accession number as a point of reference only. However, individual transcript sequences of the same gene can differ through naturally occurring variations (e.g. polymorphisms), each with its own valid existence. This clone is substantially in agreement with the reference, but a complete review of all prevailing variants is recommended prior to use. [More info](#)

**OTI Annotation:** This clone was engineered to express the complete ORF with an expression tag. Expression varies depending on the nature of the gene.

**Components:** The ORF clone is ion-exchange column purified and shipped in a 2D barcoded Matrix tube containing 10ug of transfection-ready, dried plasmid DNA (reconstitute with 100 ul of water).

**Reconstitution Method:**

1. Centrifuge at 5,000xg for 5min.
2. Carefully open the tube and add 100ul of sterile water to dissolve the DNA.
3. Close the tube and incubate for 10 minutes at room temperature.
4. Briefly vortex the tube and then do a quick spin (less than 5000xg) to concentrate the liquid at the bottom.
5. Store the suspended plasmid at -20°C. The DNA is stable for at least one year from date of shipping when stored at -20°C.

**RefSeq:** [NM\\_001166416.1](#), [NP\\_001159888.1](#)

**RefSeq Size:** 4946 bp

**RefSeq ORF:** 4131 bp

**Locus ID:** 70208

**UniProt ID:** [Q80YQ2](#)

**Cytogenetics:** 10

**Gene Summary:**

Component of the Mediator complex, a coactivator involved in the regulated transcription of nearly all RNA polymerase II-dependent genes. Mediator functions as a bridge to convey information from gene-specific regulatory proteins to the basal RNA polymerase II transcription machinery. Mediator is recruited to promoters by direct interactions with regulatory proteins and serves as a scaffold for the assembly of a functional pre-initiation complex with RNA polymerase II and the general transcription factors (By similarity). Also required for transcriptional activation subsequent to the assembly of the pre-initiation complex. Required for transcriptional activation by adenovirus E1A protein. Required for ELK1-dependent transcriptional activation in response to activated Ras signaling. [UniProtKB/Swiss-Prot Function]