

Product datasheet for **MG216881**

Diexf (NM_145415) Mouse Tagged ORF Clone

Product data:

Product Type:	Expression Plasmids
Tag:	TurboGFP
Symbol:	Diexf
Synonyms:	AA408296; AW045375; Def
Mammalian Cell Selection:	Neomycin
Vector:	pCMV6-AC-GFP (PS100010)
E. coli Selection:	Ampicillin (100 ug/mL)



[View online »](#)

ORF Nucleotide Sequence: >MG216881 representing NM_145415
Red=Cloning site Blue=ORF Green=Tags(s)

TTTTGTAATACGACTCACTATAGGGCGCCGGGAATTCGTGACTGGATCCGGTACCGAGGAGATCTGCC
GCCGCGATCGCC

ATGGGCAAACGCCGAACCGGGCCGAGCCAGATGCTCAGCACCATGACCAAGAAGCAGAAGAAGCACC
TCCGCGACTTCGGCGAGGAGCACCCCTTCTACGACAGGTTTCCAAGAAGGAAGCCAAGCCGAGATTTG
TCAGCTGCCAGAGATTCAGATTCTTACATTCTGAAAGTGAATCAGAGAGTGAACAAGAGCACGTTTCA
GGGTACCACAGACTGCTTGCTACATTAAGAATGTTTCTGAGGAAGAGGAAGAGGAGGAGGAGGAGG
AGGAGGAGGAGGAGGAGGAAGAGGAAGAGGAAGATGACAGTGTGTAGGTGATGCAGAAATGAATGAGGA
AGCTGGCAGTGAGGATGGCAGTGTGGGAGAAGCTGCTGTCTCGGAGGCTGCTGAGGAGGCTGCTGAGACA
CAGGAACATATGTCTCTAGCTGACAACTCAAAAAGAAAAGATGGTGAAGAGCCACCTGGTGTATCACAGA
AATCCTCAGAGGATTCACAGATGTGAAACACGAGTCACTGTTGAGCCTGGAACTAATTTTCTAGAAGA
GGATAGCGGGGCGAGTTGTTCCAGAGGCCATCCCAAGATCCGTTTCAACAACATGTCAACAAGAAGT
AAAGAGAAGGAAATTCAGCTGCTGCTCCAGCCCTCAGCTACCCAGCAACTGAAATGGCCAGTCTGG
GACATCTTGTCTTTTATCAAAGTTCAGAAAGCAGGAAACATTTAAACCTCAAAGGATATTGACCTAAA
GTTACTTATCTTTCAGAAAGCTCTAGAATCCACCTGGGCAAAAACCAATAGCCAATTTCTATCTGGACCT
CAAAAATCAATAGCTCCTTACCCCGCTCCAGAAAGAGCTGTTCTTAATTATGAATCTTACCGGGACC
TGTTCACCCCTGAGAGGACTGCCCTGAAGAATGGAGAAGAAGTCCGCCATGTATACTGCCTGATGCCAT
AAACCATGTCTCAAAGCCAATGCTCAGGTGCTGGCTAACAACAGTAGGCGCCGAGGCCAGAAAATTGGG
GTGGGTGAAGATGATGACTTCAGGGACCAAGGGCTCACCAGGCCTAAGTACTTATAGTGGTGCCCTTCC
GGGAAGCTGCCCTTCGGGTGGTCCAGCTTTCATCAGCCTCCTTGAAGGGGACAGCAAGAAGAAAATCAT
TGTAAGCAATAAAAAGCGGTTTCAGGGGAGTATGGATCTGATCCTGAGGAGAGACCTCCCAACCTGAAG
AGGCCTGAGGATTATGAAGCTGTGTCGTGGGCAATATTGATGACCACTTCAGGATTGGAGTGGCAATAC
TTCAGAGGAGCATCCGCTCTACGCCCGTTTTACTCCTCCGACATCCTCATTGCCCTCCCCCTGGGCTT
GAGGACCATCATTGGTGGTGAAGGAGAGAAGAAGAGATTTGACTTCCTGTCTTCCGTTGAGCTGCTC
ATCATTGACCAGGCTGACATTTACCTGATGCAGAAGTGGGAACATGCTTGCATTTGATGAACACATGA
ACCTGTGCCCTTGGACTCACACGGGGTGGACTTCTCGAGAGTCCGAATGTGGAGCCTCAATAACTGGTC
CAAGTACTACCGACAGACACTGCTCTTTGGTGCCTGCAGGATGCCAGATCAACTCTGTGTTCAACAAG
CACTGCATCAATGCTCAAGGCCAGGTGGCTGTGAGGAATGTCCCATGACGGGCTCCATCAGTCATGTT
TGGTGCAGTCCCTCACGTCTTCCAGAGAATGGAAGCACAAGACCTATCTTCACTGATCGATGCCAGGTT
TCACTTTTTATAAACAAGATTTTGCCTCAGTACCGGGATGCTGTGATGCTCACACACTCATCTATGTC
CCCTCTACTTTGACTTTGTGCGTCTCCGAAATTACTTCAAGAAAGAAGAGCTGAACTTCACACACATCT
GCGAGTATACGAGAAGTCTGGGATCTCCAGGGCTCGACACTTCTTCTGCAAGGAGAGAAGCAGTTTCT
GCTCCTCACAGAACGCTTCCATTTCTACAAAAGGTACACAATAAAAAGGCATCAGGAACCTGATATTCTAT
GAACTGCCAACGTACCCTCACTTCTACAGTGAAGTCTGTAACATGCTGAGAGCCACCAGCAGAGGAGAGG
AGGCCACGTGGACGTGCACCGTGTGATTCCAAGTATGATGCCAGAGGCTGGCGGCTGTGTTGGTGT
GGAGCGGGCGGCACAGATGCTCGAGTCTCAAAGAATGTCCACCTTTCGTACCGGAGAAAA

ACGCGTACGCGGCCGCTCGAG - GFP Tag - GTTTAA

Protein Sequence: >MG216881 representing NM_145415
 Red=Cloning site Green=Tags(s)

MGKRRNRGRSQMLSTMTKKQKKHLRDFGEEHPFYDRVSKKEAKPQICQLPESSDSSHSESESESEQEHVS
 GYHRLLATLKNVSEEEEEEEEEEEEEEEEEEDDSAVGDAEMNEEAGSEDSVGEAAVSEAAEEAAET
 QEHMSLADNSKEKDGEPPGVSGKSSEEF TDVKHESLFSLETNFEEDSGGSCSQRPSQDPFQQHVNKEL
 KEKEIQAAAASPPATQQLKWPVLGHLVFSKFQKTETFKPPKDIDLKLLHLQKPLESTWAKTNSQFLSGP
 QKSNSSTPLQKELFLIMNSYRDLFYPERTALKNGEEVRHVYCLHAINHVLKANAQVLANNRRRSQKLG
 VGEDDDFRDQGLTRPKVLIVVPFREAAALRVVQLFISLLEGDSSKKIIVSNKKRFQGEYGS DPEERPPNLK
 RPEDYEA VFGNI DDHFRIGVA I LQRSIRLYAPFYSSDILIASPLGLRTIIGGEGEKKRDFDLSSVELL
 IIDQADIYLMQNWEHVLHLMNHMNLPLDSHGVD FSRVRMWSLNNWSKYRQTLLFGALQDAQINSVFNK
 HCINAQGQAVVRNVPMTGSISHVLVQLPHVFQRMEAQDLSSVIDARFHFFINKILPQYRDVMSHTLIYV
 PSYFDFVRLRNYFKKEELNFTHICEYTKSGISRARHFFLQGEKQFLLLTERFHFYKRYTIKIRNLIFY
 ELPTYPHFYSEVCNMLRATSRGEEATWCTVLYSKYDAQRLAAVGVVERAAQMLQSPKNVHLFVTGEK

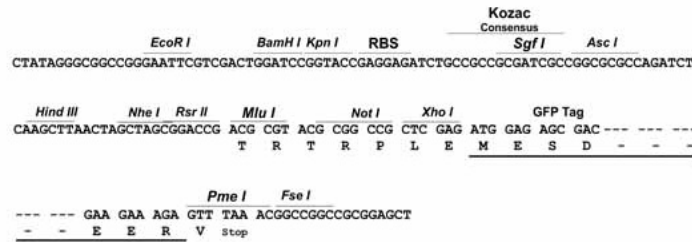
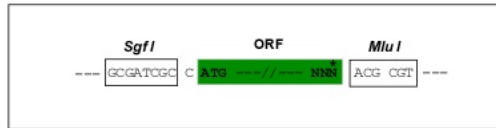
TRTRPLE - GFP Tag - V

Chromatograms: https://cdn.origene.com/chromatograms/ja1804_b02.zip

Restriction Sites: SgfI-MluI

Cloning Scheme:

Cloning sites used for ORF Shutting:

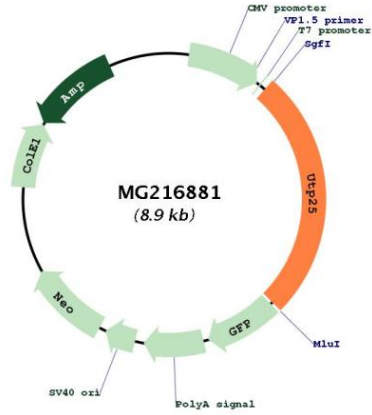


ACCN: NM_145415

ORF Size: 2304 bp

OTI Disclaimer:	<p>Due to the inherent nature of this plasmid, standard methods to replicate additional amounts of DNA in E. coli are highly likely to result in mutations and/or rearrangements. Therefore, OriGene does not guarantee the capability to replicate this plasmid DNA. Additional amounts of DNA can be purchased from OriGene with batch-specific, full-sequence verification at a reduced cost. Please contact our customer care team at custsupport@origene.com or by calling 301.340.3188 option 3 for pricing and delivery.</p> <p>The molecular sequence of this clone aligns with the gene accession number as a point of reference only. However, individual transcript sequences of the same gene can differ through naturally occurring variations (e.g. polymorphisms), each with its own valid existence. This clone is substantially in agreement with the reference, but a complete review of all prevailing variants is recommended prior to use. More info</p>
OTI Annotation:	<p>This clone was engineered to express the complete ORF with an expression tag. Expression varies depending on the nature of the gene.</p>
Components:	<p>The ORF clone is ion-exchange column purified and shipped in a 2D barcoded Matrix tube containing 10ug of transfection-ready, dried plasmid DNA (reconstitute with 100 ul of water).</p>
Reconstitution Method:	<ol style="list-style-type: none">1. Centrifuge at 5,000xg for 5min.2. Carefully open the tube and add 100ul of sterile water to dissolve the DNA.3. Close the tube and incubate for 10 minutes at room temperature.4. Briefly vortex the tube and then do a quick spin (less than 5000xg) to concentrate the liquid at the bottom.5. Store the suspended plasmid at -20°C. The DNA is stable for at least one year from date of shipping when stored at -20°C.
Note:	<p>Plasmids are not sterile. For experiments where strict sterility is required, filtration with 0.22um filter is required.</p>
RefSeq:	<p>NM_145415.2, NP_663390.2</p>
RefSeq Size:	<p>5548 bp</p>
RefSeq ORF:	<p>2307 bp</p>
Locus ID:	<p>215193</p>
UniProt ID:	<p>Q8BTT6</p>
Cytogenetics:	<p>1 H6</p>
Gene Summary:	<p>Regulates the p53 pathway to control the expansion growth of digestive organs. [UniProtKB/Swiss-Prot Function]</p>

Product images:



Circular map for MG216881