

Product datasheet for **MG216879**

Def6 (NM_027185) Mouse Tagged ORF Clone

Product data:

Product Type:	Expression Plasmids
Product Name:	Def6 (NM_027185) Mouse Tagged ORF Clone
Tag:	TurboGFP
Symbol:	Def6
Synonyms:	2410003F05Rik; 6430538D02Rik; AV094905; Ibp; Slat; Slat2; Slat6
Mammalian Cell Selection:	Neomycin
Vector:	pCMV6-AC-GFP (PS100010)
E. coli Selection:	Ampicillin (100 ug/mL)



[View online »](#)

ORF Nucleotide Sequence:

>MG216879 representing NM_027185
 Red=Cloning site Blue=ORF Green=Tags(s)

TTTTGTAATACGACTCACTATAGGGCGGCCGGAATTCGTCGACTGGATCCGGTACCGAGGAGATCTGCC
 GCC**CGCATCGCC**

ATGGCCCTGCGCAAGGAGCTGCTCAAGTCTATCTGGTACGCCCTTCACTGCACTGGACGTGGAGAAGAGCG
 GCAAGGTCTCCAAGTCCCAACTCAAGGTGCTGTCCACAACTGTACACTGTCTGAACATCCCCATGA
 CCCCCTGGCCCTGGAGGAGCACTTCCGGGATGACGATGATGGCCCGGTGTCCAGTCAAGTTACATGCC
 TACCTCAACAAGTACATCCTAGACAAGGTGGAGGAGGAGCTTTCGTTAAGGAGCACTTCGATGAGTTGT
 GCTGGACCCTGACTGCCAAGAAGAACTACAGGGCAGATGGCATCGGGAGCAGCCACTCTCTAATCAGGA
 TGCTTCCGCTCTATGGTGCCTCTCAACTTCTGTCTGAGGACAAGTACCCGCTGATCATGGTTCCCGAT
 GAGGTAGAGTATCTGCTGAAGAAGCTCCTTGGCAGCCTGAGTTTGGAGATGGGCCTGGGCAAGCTGGAGG
 AGCTGCTGGCCAGGACGCCAGTACGCCAGACCGCCGTGGGGCTCAGCGTCTGGCAGTTTCTGAACT
 CTTCAACTCAGGCCGCTGCCTTCGGGGTGTGGGCGCGACTCCCTCAGCATGGCCATCCAAGAAGTCTAC
 CAGGAGCTCATCCAAGAGCTCCTGAAGCAGGGCTATCTGTGGAAGCGAGGGCACCTGCGGAGGAACTGGG
 CCGAGCGCTGTTCCAGCTGCAACCCAGCAGCCTCTGCTACTTTGGGAGTGAGGAATGCAAGGAGAAACG
 AGGCACCATTCCTGGATGCTCACTGCTGTGTGGAGGTGCTTCCGACCGCGAAGGAAAGCGCTGCATG
 TTTTGTGTGAAGACTGCCAGCCGACCTATGAGATGAGCGCCTCAGACACCCGCCAGCGCCAGGAGTGGA
 CGGCCGCCATCCAGACTGCGATCCGGCTGCAGGCGGAGGGGAAGACGTCGCTGCACAAGGACCTGAAACA
 GAAGCGGCGGGAGCAGCGGGAACAGCGCAGGACGCGCCGGCAGCCAAGGAGGAGGAGCTGCTGCGACTG
 CAGCAGCTGCAGGAGGAGAAGGAGAGGAAGTCAAGAAGTGGAGCTGCTGAGGAGGCTCAGCGGCAGG
 CCGAGCGCTGCTGCAGGAAGAGGAGGAGCGCCCGTAGCCAGCACAAGGAGCTGCAGCAGGCTCTGGA
 GGGCAGCTGCGGGAGGCGGAGCAGGCCCGGCCCTCTATGCAGGCTGAGATGGAGCTGAAGAAGGAAGAG
 GCGGCCCGGCAACGCGCAGCGCATCGCTGAACTGGAGGAGATGCAGGAGCGGCTGCAGGAAGCTCTGCAAC
 TAGAGGTGAAAGCTAGGCGGGATGAGGAGGCCGTGCGCCTCGCCAGACCAGGCTGCTGGAGGAGGAGGA
 GGAGAAGCTGAAGCAGCTGATGCATCTGAAGGAGGAGCAAGAGCGCTACATCGAGCGAGCGCAGCAGGAG
 AAGCAGGAGCTCCAGCAGGAGATGGCGCTGCAGAGCCGTTCCCTGCAGCACGCCAGCAGCAGCTGGAGG
 AAGTGCAGCAGAACCGGAGAGGCGAGCAGGACGTGGAGGCTGCCAGAGGAAGTTGCCCGAGGCCAG
 CACCAACGTGAAACTGGAATGTCAGATGAACAGGCTCATGCATCCGATCGAGCCAGGAGATAAGCGA
 CCCACCACGACAGCTCCTTACGGGCTCCAGCCCCCTCGCTTCCCGCCGGGACTCCTCTCTAAGC
 GCCTGACCCGCTGGGGTTCCAAGGTAACAGAACCCTCTCAGTCAATAGCAGCGAACAGAAGTCCCTCAA
 TGTTGGAGATGAGACTCCCATCCTAGCTTTGGCCTCTCAGGAAGAAAACTGGATCCAGCACCAGGGAAT

ACGCGTACGCGGCCGCTCGAG – GFP Tag – GTTTAA

Protein Sequence:

>MG216879 representing NM_027185
 Red=Cloning site Green=Tags(s)

MALRKELLKSIWYAFTALDVEKSGKVSQSLKVLSHNLYTVLNIPHDPVALEEHRDDDDGPVSSQGYMP
 YLNKYILDKVEEGAFVKEHFDELWTLTAKKNYRADGIGSSPLSNQDAFRLWCLFNFLSEDKYPLIMVPD
 EVEYLLKLLGSLSEMLGKLEELLAQDAQSAQTAVGLSVWQFLELFNSGRCLRGVGRDSLMAIQEVY
 QELIQDVLKQGYLWKRGLRRNWAERWFQLQPSSLCYFGSECKEKRGTIPLDAHCCVEVLPDREGKRCM
 FCVKTASRTYEMSASDRQRQEWTAIIQTAIRLQAEKTSLHKDLKQKRREQREQRRRAAKEEELLRL
 QQLQEEKERKLQELELLQEAQRQAERLLQEEEEERRRSQHKELQQALEGQLREAEQARASMQAEMELKKEE
 AARQRQRIAELEEMQERLQALQLEVKARRDEEAVRLAQTRLLEEEEEKLQQLMHLKEEQERYIERAQQE
 KQELQEMALQSRSLQHAQQLEEVQRNQRADEDVAAQRKLRQASTNVKHNVMNRLMHPIEPGDKR
 PTTSSSFTGFQPPLARRDSSLKRLTRWGSQGNRTLSVNSSEQKSLNGGDETPILALASQEEKLDPAPGN

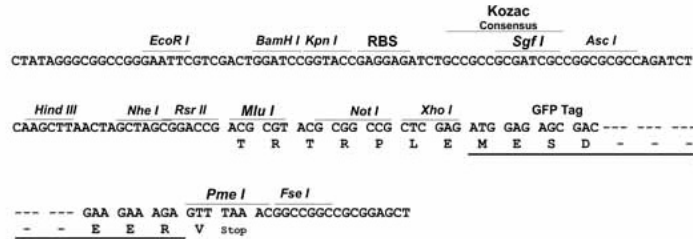
TRTRPLE – GFP Tag – V

Restriction Sites:

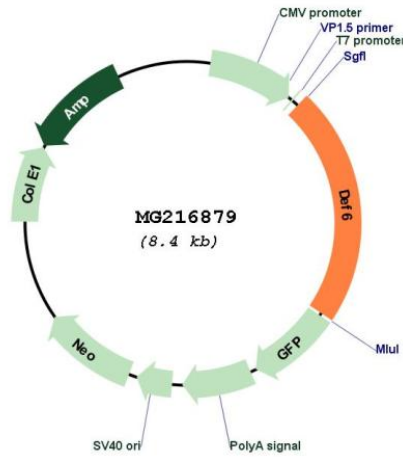
SgfI-MluI

Cloning Scheme:

Cloning sites used for ORF Shutting:



Plasmid Map:



ACCN: NM_027185
 ORF Size: 1890 bp

OTI Disclaimer:	<p>Due to the inherent nature of this plasmid, standard methods to replicate additional amounts of DNA in E. coli are highly likely to result in mutations and/or rearrangements. Therefore, OriGene does not guarantee the capability to replicate this plasmid DNA. Additional amounts of DNA can be purchased from OriGene with batch-specific, full-sequence verification at a reduced cost. Please contact our customer care team at custsupport@origene.com or by calling 301.340.3188 option 3 for pricing and delivery.</p> <p>The molecular sequence of this clone aligns with the gene accession number as a point of reference only. However, individual transcript sequences of the same gene can differ through naturally occurring variations (e.g. polymorphisms), each with its own valid existence. This clone is substantially in agreement with the reference, but a complete review of all prevailing variants is recommended prior to use. More info</p>
OTI Annotation:	<p>This clone was engineered to express the complete ORF with an expression tag. Expression varies depending on the nature of the gene.</p>
Components:	<p>The ORF clone is ion-exchange column purified and shipped in a 2D barcoded Matrix tube containing 10ug of transfection-ready, dried plasmid DNA (reconstitute with 100 ul of water).</p>
Reconstitution Method:	<ol style="list-style-type: none">1. Centrifuge at 5,000xg for 5min.2. Carefully open the tube and add 100ul of sterile water to dissolve the DNA.3. Close the tube and incubate for 10 minutes at room temperature.4. Briefly vortex the tube and then do a quick spin (less than 5000xg) to concentrate the liquid at the bottom.5. Store the suspended plasmid at -20°C. The DNA is stable for at least one year from date of shipping when stored at -20°C.
RefSeq:	<p>NM_027185.3, NP_081461.2</p>
RefSeq Size:	<p>2294 bp</p>
RefSeq ORF:	<p>1893 bp</p>
Locus ID:	<p>23853</p>
UniProt ID:	<p>Q8C2K1</p>
Cytogenetics:	<p>17 A3.3</p>
Gene Summary:	<p>Phosphatidylinositol 3,4,5-trisphosphate-dependent guanine nucleotide exchange factor (GEF) which plays a role in the activation of Rho GTPases RAC1, RhoA and CDC42. Can regulate cell morphology in cooperation with activated RAC1. Plays a role in Th2 (T helper cells) development and/or activation, perhaps by interfering with ZAP70 signaling. Required for optimal T-cell effector function, lymphocyte homeostasis and the prevention of systemic autoimmunity (By similarity).[UniProtKB/Swiss-Prot Function]</p>