

Product datasheet for **MG216842**

Prkd3 (NM_001171005) Mouse Tagged ORF Clone

Product data:

Product Type:	Expression Plasmids
Product Name:	Prkd3 (NM_001171005) Mouse Tagged ORF Clone
Tag:	TurboGFP
Symbol:	Prkd3
Synonyms:	4930557O20Rik; 5730497N19Rik; Pkcnu; PKD3; Prkcn
Mammalian Cell Selection:	Neomycin
Vector:	pCMV6-AC-GFP (PS100010)
E. coli Selection:	Ampicillin (100 ug/mL)



[View online »](#)

ORF Nucleotide Sequence:

>MG216842 representing NM_001171005
 Red=Cloning site Blue=ORF Green=Tags(s)

TTTTGTAATACGACTCACTATAGGGCGGCCGGAATTCGTCGACTGGATCCGGTACCGAGGAGATCTGCC
 GCC**CGCATCGCC**

ATGTTTCCAGAGTGTGGATTCTTTGGCATGTATGATAAAATTCTTCTCTTCGCCACGACATGAAGTCAAG
 AAAACATTTTGCAGCTGATTACCTCAGCAGATGAAATACATGAAGGGGACCTGGTAGAAGTTGTCCTGTC
 AGCTTTGGCCACAGTGAAGACTTCCAGATCCGCCCTCACGCTCTCTATGTACATTCTTACAAGACCT
 ACTTTTTGTGATTACTGTGGTAAATGCTCTGGGGACTGGTACGTCAAGGATTAAGTGAAGGCTGTG
 GATTAATATCATAAACGATGTGCCTTCAAGATTCCAAATAACTGCAGTGGAGTAAGAAAGAGACGCTCT
 GTCAAATGTATCTCTGCCAGGACCTGGCCTCTCAGTTCGAAGACCCCTGCAGCCTGAGTGTGTGCCCTT
 CTCAGTGAAGAGTCACATACTACCAAGAGCCAGTAAGAGAATCCCGTCGTGGAGTGGTCGTCCGATCT
 GGATGGAAAAGATGGTAATGTGCAGGGTCAAAGTCCCTCACACATTTGCTGTCCACTCTTATGGCCGCC
 GACCATATGCCAGTACTGCAAGCGCCTGCTGAAAGGCCTTTCGCCAAGGGATGCAGTGTAAAGATTGC
 AAATTCAACTGCCATAAACGCTGTGCATCCAAAGTACCAAGAGACTGCCTTGGCGAAGTTACTTTCAATG
 GAGAGCCGTGCAGCGTGGGGACTGATGCAGACATGCCATGGATATTGACAGTAGTGATGTGAACAGTGA
 TGGCAGTAGGGGCTTGGATGACTCAGAGGAGCCGTCGCCGCCGAAGACAAGATGTTCTTCTCGACCCG
 ACTGATCTCGACGTGGAGCGAGATGAGGAGACTGTTAAGACAATCAGTCCATCCACCAGCAATAATACC
 CGTGATGAGGGTGGTGCAGTCCATCAAGCACAAAAGAGGAGGAGCAGCACAGTTGTGAAGGAAGGGTG
 GATGGTCCACTACACCAGCAGGGACAACCTGAGAAAGAGACATTATTGGAGACTTGACAGTAAATGTCTA
 ACATTTTCAAATGAATCTGGATCAAAGTATTATAAGGAAATCCACTTTGAAAATCATCCCGATAC
 CTTCCCGCAAGATTTCCACCAGCATTTCAAGCAGTAACCCACACTGTTTTGAAAATCATCCCGATAC
 CGTGGTATACTTTGTTGGTGAGAACAATGGGAGCAGCTCTATAATCCTGTTCTCGCTGCCACTGGAGTG
 GGACTAGATGTGGCGCAGAGCTGGGAAAAGCAATTCGCCAGGCCCTCATGCCTGCACTCCTCAAGCAA
 GTGTTTGCACCTTCTCCGGGGCAAGGGAAGGACCACAAAGATCTGGCTACCAGTATCTCCGTGTCTAACTG
 TCAGGTTCCAGGAGAATGTCGACATCAGCAGCGTTTACCAGATCTTTGCGGACGAGGTGCTTGGTTCTGGC
 CAGTTTGGCATTGTTTATGGAGGAAAACACAGAAAGACGGGAAGGGATGTGGCTATTAAAGTATTGATA
 AAATGAGGTTCCCAACAAAGCAAGAGAGTCAGCTCCGGAACGAAGTGGCCATTTTACAGAATCTGCACCA
 TCCTGGGATTGTAACCTGGAGTGTATGTTTGAACCCCAAGAGTCTTCGTGGTGTGAAAAGGCTC
 CATGGAGATATGTTGAAATGATTCTGTCCAGTAAAAGAGTTCGACTTCCAGAACGGATTACCAAATTC
 TGGTCACACAGATACTTGTTCCTTGGAGAAATTTACATTTCAAGAATATTGTGCACTGTGATTTAAAGCC
 CGAAAATGTGCTGCTTGCATCCGCAGAGCCATTTCTCAGGTGAAGCTGTGTGACTTTGGGTTTGGCCGC
 ATCATTGGTGAGAAGTCGTTCCGGAGGTGAGTGGTAGGAACTCCAGCCTACTTAGCCCTGAGGTTCTCA
 GGAGCAAAGGCTACAACCGTTCTTAGACATGTGGTGGTGGCGTCATCGTTTATGTGAGCCTCAGTGG
 CACATTTCCATTCAATGAAGATGAAGATATAAATGACCAAATCCAAAACGCTGCGTTTATGTACCCACCA
 AATCCATGGCGAGAAATTTCCAGTGAAGCAATTGACTTGATAAACAACCTGCTTCAAGTGAAGATGAGAA
 AACGATACAGTGTGACAAATCTCTCAGTCATCCTTGGCTACAGGATTATCAGACTTGGCTTGACCTCAG
 AGAATTTGAAACTCGCATTGGAGAACGTTACATTACACACGAAAGTGTGATGCTCGCTGGGAAATACAC
 GCATACACGCACAATCTGGAATACCCAAAGCATTTCATTATGGCCCCAACCCAGACGACATGGAGGAGG
 ATCCT

ACGCGTACGCGGCCGCTCGAG - GFP Tag - GTTTAA

Protein Sequence: >MG216842 representing NM_001171005
 Red=Cloning site Green=Tags(s)

```

MFPECGFFGMYDKILLFRHDMNSENILQLITSADEIHEGDLVEVVL SALATVEDFQIRPHALYVHSYKAP
TFCDYCGEMLWGLVRQGLKCEGCGLNYHKRCAFKIPNNCSGVRKRRLSNVSLPGPGLSVPRPLQPECVPL
LSEESHTEQEPSKRIPSWSGRPIWMEKMVMCRVKVPHTFAVHSYGRPTICQYCKRLLKGLFRQGMQCKDC
KFNCHKRCASKVPRDCLGEVTFNGEPCSVGTDADMPMDIDSSDVNSDGSRLDDSEEPSPPEDKMFFLDP
TDLDVERDEETVKTISPSTSNNIPLMRVVQSIKHTKRRSSTVVKEGMMVHYTSRDNLKRHYWRLDSKCL
TLFQNESGSKYYKEIPLSEILRVSSPQDFTSISQGSNPHCFEIIITDVTVVYFVGENNGSSSHNPVLAATGV
GLDVAQSWEKAIRQALMPVTPQASVCTSPGQGDHKLATSISVSNQVQENVDISSVYQIFADEVLGSG
QFGIVYGGKHKRKTGRDVAIKVIDKMRFPKQESQLRNEVAILQNLHHPGIVNLECMFETPERVFVMEKL
HGDMLEMILSSEKSRLPERITKFMVTQILVALRNLHFKNIVHCDLKPENVLLASAEPFPQVKLCDFGFAR
IIGEKSFRRSVVGTTPAYLAPEVLRSKGYNRSLDMWSVGIIVYVSLSGTFPFNEDEDINDQIQNAAFMYPP
NPWREISSEAIIDLINLLQVKMRKRYSDKSLSHPWLQDYQTLWDLREFETRIGERYITHESDDARWEIH
AYTHNLEYPKHFIMAPNPDDMEEDP
  
```

TRTRPLE - GFP Tag - V

Restriction Sites: Sgfl-MluI

Cloning Scheme:



ACCN: NM_001171005

ORF Size: 2385 bp

OTI Disclaimer: The molecular sequence of this clone aligns with the gene accession number as a point of reference only. However, individual transcript sequences of the same gene can differ through naturally occurring variations (e.g. polymorphisms), each with its own valid existence. This clone is substantially in agreement with the reference, but a complete review of all prevailing variants is recommended prior to use. [More info](#)

OTI Annotation: This clone was engineered to express the complete ORF with an expression tag. Expression varies depending on the nature of the gene.

Components: The ORF clone is ion-exchange column purified and shipped in a 2D barcoded Matrix tube containing 10ug of transfection-ready, dried plasmid DNA (reconstitute with 100 ul of water).

Reconstitution Method:

1. Centrifuge at 5,000xg for 5min.
2. Carefully open the tube and add 100ul of sterile water to dissolve the DNA.
3. Close the tube and incubate for 10 minutes at room temperature.
4. Briefly vortex the tube and then do a quick spin (less than 5000xg) to concentrate the liquid at the bottom.
5. Store the suspended plasmid at -20°C. The DNA is stable for at least one year from date of shipping when stored at -20°C.

RefSeq: [NM_001171005.1](#), [NP_001164476.1](#)

RefSeq Size: 5083 bp

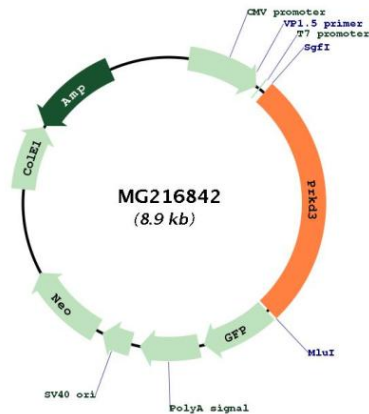
RefSeq ORF: 2388 bp

Locus ID: 75292

Cytogenetics: 17 E3

Gene Summary: Converts transient diacylglycerol (DAG) signals into prolonged physiological effects, downstream of PKC. Involved in resistance to oxidative stress (By similarity).
[UniProtKB/Swiss-Prot Function]

Product images:



Circular map for MG216842