

Product datasheet for **MG216820**

Slc22a3 (NM_011395) Mouse Tagged ORF Clone

Product data:

Product Type:	Expression Plasmids
Product Name:	Slc22a3 (NM_011395) Mouse Tagged ORF Clone
Tag:	TurboGFP
Symbol:	Slc22a3
Synonyms:	EMT; Oct3; Orct3; Slca22a3
Mammalian Cell Selection:	Neomycin
Vector:	pCMV6-AC-GFP (PS100010)
E. coli Selection:	Ampicillin (100 ug/mL)



[View online »](#)

ORF Nucleotide Sequence:

>MG216820 representing NM_011395
 Red=Cloning site Blue=ORF Green=Tags(s)

TTTTGTAATACGACTCACTATAGGGCGGCCGGGAATTCGTCGACTGGATCCGGTACCGAGGAGATCTGCC
 GCC**CGGATCGCC**

ATGCCACGTTTCGACCAGGCACTGAGGAAGCGGGCGAGTTCGGGCGCTCCAGCGGCGCGTGTTCCTGC
 TGCTGTGCTGACGGGTGCACCTTCGCCCTCCTCTTCGTCGGTGTGGTCTTCCTGGGCAGCCAGCCGA
 CTAATAATTGGTGTGCGGGCCGCGGCCACCGCGCTGGCCGAGCGCTGCGCCTGGAGCCCGAGGAGGAG
 TGGAACTCACCACACCGGAGCTCCACGTCCCAGCTGAGCGCCGCGGCCAAGGCCACTGCCACCGTACC
 TGCTGGAAGCCACTAATACCAGCTCAGAGCTCAGCTGCGACCCACTACTGCCTTCCCAACCGCTCCGC
 GCCTCTGGTGTCTGCAGCGGTGACTGGCGCTATGTGGAGACCCACTCTACCATCGTCAGCCAGTTTAC
 CTTGTCTGCAGCAATGCCTGGATGTTGGACCTCACCAAGCCATCCTGAACCTTGGCTTCTGGCTGGG
 CTTTTACCTTGGCTATGCAGCGGACAGATATGCGAGGCTCATCATTTACTTAATATCCTGTTTCGGCGT
 TGGCATCACAGGAGTCGTGGTGGCATTTCGCCAAATTTTCTGTGTTTGTGATTTCCGCTTCTACAA
 GGAGTGTGGAAAGGGGCGCTGGATGACTTGGCTTCGTGATCGTGACAGAAATAGTTGGTTCAAAACAAA
 GGAGGATTGTGGGAATCGTGATCCAGATGTTCTTACCCTCGGGATCATTATTCTTCTGGGATTGCCTA
 CTTACGCCAGCTGGCAGGGCATCCAGCTAGCCATCTCTGCCCAGCTTCTCTTCTCTCTATTAC
 TGGGTGGTCCCTGAGTCTCCCGCTGGCTGATCACCCGGAAGCAAGGAGAGAAAGCCTTGCAGATCCTGA
 GCGCGTGGCTAAGTGAATGAAAACACCTCTCATCAAATTACTCAGAGATCACAGTTACAGATGAAGA
 AGTCAGTAACCCATCCTGTTTAGACCTTGTGAGAACTCCCAATGAGGAAATGCACGCTCATCCTATG
 TTTGCTTGGTTACGAGCGCCGTTGGTGTACCAAGGACTTGTATGCGCCTGGGACTTATCGGAGGCAACC
 TCTACATAGACTTCTTTATCTCTGGGCTGTGGAGCTGCCCGGAGCTCTTAACTCTTGACCATTTGA
 GCGCCTTGGACGACGCTTCCCTTTGCGGCAAGCAATATAGTGGCAGGGGTGCTGTCTGGTCACTGCA
 TTTTTACCAGAAGGGATACCGTGGCTGAGGACCACAGTCGCTACCCTGGGAAGACTAGGGATAACCATGG
 CCTTCGAAATTGTTATTTGGTAAATTCAGAGTTGTACCCAACGACATTACGGAACCTTGGGGTTTCACT
 CTGCTCAGGCTTGTGACTTTGGGGGATTATAGCCCGTTTCTGCTTTTCGGCTGGCAGCTATATGG
 TTAGAAGTGCCTCTGATCATCTTTGGGATCCTGGCGTCTGTCTGTGGTGGCCTCGTGATGCTTTGCCTG
 AAACGAAGGGCATTGCCTTGGCGGAGACGGTGAAGACGTAGAAAAGCTTGGCAGTTCACAGTTGCATCA
 GTGTGGCAGAAAAAGAAAACCCAGTTTCTACTTCTGATGTC

ACGCGTACGCGGCCGCTCGAG - GFP Tag - GTTTAA

Protein Sequence:

>MG216820 representing NM_011395
 Red=Cloning site Green=Tags(s)

MPTFDQALRKAGEFGRFQRRVFLLLCLTGVTF AFLFVGVVFLGSPDYWCRGPRATALAERCAWSPEEE
 WNLTPPELVPAERRGQGHCHRYLLEATNTSSELSCDPLTAFPNRSAPLVSCSGDWRYVETHSTIVSQFD
 LVCSNAWMLDLTQAILNLGFLAGFTLGYAADRYRLIIYLISCFVGTGTVVAFAPNFSVFVIFRFLQ
 GVFGKAWMTCFVIVTEIVGSKQRRIVGIVIQMFFTLGIIILPGIAYFTPSWQGIQLAISLPSFLFLYY
 WVPESPRWLITRKQGEKALQILRRVAKCNGKHLSSNYSEITVTDEEVSNPCLDLVTRTPQMRKCTILM
 FAWFTSAVVYQGLVMRLGLIGGNLYIDFFISGLVELPGALLILLTIERLRRLPFAASNIVAGVSLVTA
 FLPEGIPWLRRTVATLGRIGITMAFEIVLVNSELYPTTLRNFGVSLCSGLCDFGGIAPFLLFRLAAIW
 LELPLIIFGILASVCGGLVMLLPETKGIAPETVEDVEKLGSSQLHQCGRKKKTQVSTSDV

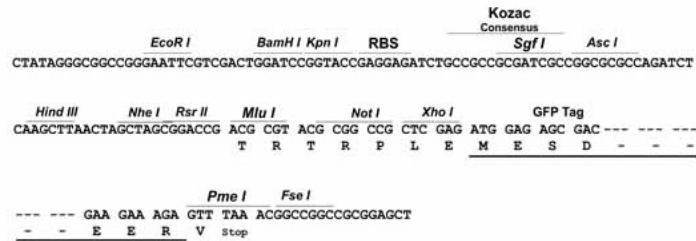
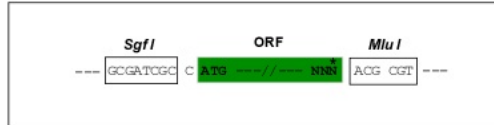
TRTRPLE - GFP Tag - V

Restriction Sites:

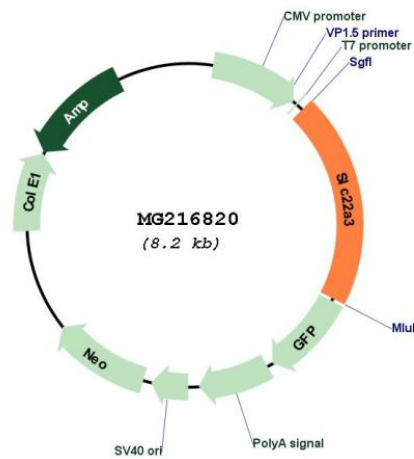
Sgfl-MluI

Cloning Scheme:

Cloning sites used for ORF Shutting:



Plasmid Map:



ACCN:	NM_011395
ORF Size:	1653 bp
OTI Disclaimer:	The molecular sequence of this clone aligns with the gene accession number as a point of reference only. However, individual transcript sequences of the same gene can differ through naturally occurring variations (e.g. polymorphisms), each with its own valid existence. This clone is substantially in agreement with the reference, but a complete review of all prevailing variants is recommended prior to use. More info
OTI Annotation:	This clone was engineered to express the complete ORF with an expression tag. Expression varies depending on the nature of the gene.
Components:	The ORF clone is ion-exchange column purified and shipped in a 2D barcoded Matrix tube containing 10ug of transfection-ready, dried plasmid DNA (reconstitute with 100 ul of water).
Reconstitution Method:	<ol style="list-style-type: none">1. Centrifuge at 5,000xg for 5min.2. Carefully open the tube and add 100ul of sterile water to dissolve the DNA.3. Close the tube and incubate for 10 minutes at room temperature.4. Briefly vortex the tube and then do a quick spin (less than 5000xg) to concentrate the liquid at the bottom.5. Store the suspended plasmid at -20°C. The DNA is stable for at least one year from date of shipping when stored at -20°C.
RefSeq:	NM_011395.1
RefSeq Size:	3501 bp
RefSeq ORF:	1656 bp
Locus ID:	20519
UniProt ID:	Q9WTW5
Cytogenetics:	17 8.52 cM
Gene Summary:	Mediates potential-dependent transport of a variety of organic cations. May play a significant role in the disposition of cationic neurotoxins and neurotransmitters in the brain. [UniProtKB/Swiss-Prot Function]