

Product datasheet for **MG216819**

Als2cl (NM_146228) Mouse Tagged ORF Clone

Product data:

Product Type:	Expression Plasmids
Tag:	TurboGFP
Symbol:	Als2cl
Synonyms:	79H19D; 79H19E; BC022645; D930044G19Rik; mRn.49018
Mammalian Cell Selection:	Neomycin
Vector:	pCMV6-AC-GFP (PS100010)
E. coli Selection:	Ampicillin (100 ug/mL)



[View online »](#)

ORF Nucleotide Sequence: >MG216819 representing NM_146228
Red=Cloning site Blue=ORF Green=Tags(s)

TTTTGTAATACGACTCACTATAGGGCGCCGGGAATTCGTGCGACTGGATCCGGTACCGAGGAGATCTGCC
GCCGCGATCGCC

ATGTCTAGCTCTGAGGAGGCAGACCTGCTCCGGCTGGAGGAGTCTTCTCAACGACTCTTGCTCGAACCA
TCAGTCTCATCCTGCAGCCTCTGCTCTTAGCTGACCCGGAGCCCTCAGATCCTTGTTGGCAAAGAGTGCCT
TCGGCTTCTGCAGCAGCTGCATGAGAGTGCCAGCGTTGTGGTATGTGACAGAGCAAAGCCTGCTTTCC
CTGCGGCAGAGGCTATACCACCCACCTTCCAAGGGTCTGGAGGCGTGTGTTACTGAGCAATGCTGACC
ATGTCCTACAAGCCACATGGAATACATCAAGTCTACTGATTGCGTGGTGGCCAAAGCCTTTTCAGAA
GGTCTCAAAGAAAGAGGAGTGAATTCGGAGGAGCCAGCGCAAGGCACTGAGGCAGCTACTGCTCCTGGG
AGCTCTGAGGGCTCTGTGGCACCACGATGTGCCAGGCCCTCCGCCAGCCACTCTCCAGCAGCTGCAGA
AATACTTGTCTCTGCTGAGCCTCAGGGACACCTTGATGAGAGCCACCCGGCCAGGAGCTGGTGAT
GCATGTATACCCCTGTTTGGAAACCTGCAGTCTTTCATGGGACAGGCCCTGGACCAAGCTGTGGCCACA
CAGGCCCTGTGGCACAGCCTCAGCAGCCGGCTGAGGGATGTGCTCTGCAGCCCTGCTCACCAGCTTTGC
AGGACAGCCAGGACATCCCGTGGTGGTCACTCCACTGCGGGCTGAGCGGTGCTGCTTTGATGACTC
GCTTGTCTGTTGCAGGGCCACAATACCCACACGTTTGACCTGAAGTTGGTGTGGTAAAACCCGGCCAA
GACAAGTGTGTGCTTATATCTCACTCCTGAAGAAGAGATCTCCTCTGCACCAGAGACCCCAAGGGCC
AGGTTGTCTGGCAGTGGAAAGTGAACCCAGGCTGTGTGCCAGGCCCTCTGTGGCAAGAAGGACTTCCCTGT
GCTGGGATCAGGCCGGGAGACGCTGTGCCTCCTGAATGTCGCTGTGTGGCCTATACCTTCTGCCGAGAG
GGGCGGCTCTGCCAGGCTACCTATGATGGCGAGTGGTGTGAGCTAAGCCCATGGCAAGGGAACCTGA
AGTGGCCAGATGGCCGAACACGTTGGGACTTTTTACCAGGGCTTGGAGCATGGCTTTGGCATCTGCCT
GGTGCACCAGGCCCTCTGAGGACAAGTTGACTGTTACAAGTGCCACTGGCGGGAAAGGAGGATGTGTGAG
TACGGCATCTGTGAGTATGGCACTGACGAGGTGTACAAGGGCTATTTTCAGGCCGGTCTGCCGCAGGGT
TTGGCATCCTCGAGAGTCCCCACAGGCTCCCCAGCCCTCAGGTACACGGGCCACTGGGAGAGAGGGCA
GAGGAGTGGCTACGGCATCGAGGAGGACAGGGACAGGGCGAGCGCTACATTGGCATGTGGCAGGCTGAC
CAGCGTCATGGCCCTGGGGTCTGGTCAACCCAGGACAGCGCTGTGCTATCAGGGCACATTTCCAAGGGGACA
AGATGGCTGGCCAGGCATCCTGCTCTGCCAGGACGACTCTCTGTACGAAGGTACTTTTACCAGGGACCT
GACACTCCTAGGGAAGGCAAGGTCACCTTCCCAATGGTTTTACCTTGGATGGTCTTTTCAGTAGTGGG
ACAGATAAAGGACTGTACACACAGGAGTGTGGACACGGCTGCCCTCCACCTGACCCAAGCAGCACAC
GCAAGAGACAGCTGGGACTGGGCACCTTCCCTGTGGAGAGCCGCTGGCAGGGAGTCTACAGCCCTTCCG
GGACTTCTTGCCTTAGGCTGTCTGGGGAACAGCAGGAAGCCCTCCTGGGCTTCCACACGAGAGCTCC
AGGGAGCTACGCAAGTCCCAGGAGTGCCTGTGTGTGAGAGAGCCACCCGAGGACTGTGTGGGACGCA
TGAAGATACCTGAAGGAGCTGCTGCAGCACCCCAAGCCCAAGGCCCTGCAGCAGTACCTCAGGAAGGC
TCTGAGCAATTCGACACCCCTGGGGCAGCTGCTCCGACCCCTGATGCTGACCTTCCAGGCCACATAT
TCAGGCATCGGGGCAACAAACACCTGCAGGAGATGGCCAGGAGGAGTGAAGCAGCATGCCCGGGAGC
TTTGGGCTGCCTACAGGGTCTACTGAAGTTGCCTTGCAGCACAGGGCCAGACCTGGAGGAGGAGAA
CATGGAGACCAGGACCTGCAGGTGCACGGTTGCTCTTGCCCTCATCTGCCAGCTTCTACTCAGAG
CTCTTTCACACTGTACCTGCTTCTCCATGAGAGAGAGGATGGGCTGTACAGCCGGGGCATACCAACCTCA
GCCTCTTCCCTGACACCAAGCTGCTGGAGTTCTTGGATGTGACAGAAGCATCTGTGGCCCTCAAGGACCT
CAAGCTGACAAGCAATCAGAGATATTTCTGTTCCGGGACAAGTGTTCCTGACGGCCACTGAGTGTCTG
CAGAAGATCATCACCACAGTGCACCTCGGGAGAAGCTGGAGTACTTGAGAAGACCTATGGGGAAATTG
AGGCCACGGTGTACGGGTGCTGGGCTGCAAAACAAACTGCCATGGATGACCTATTGCCACTGCTTAT
CTATGTGGTGTCCGAGCTCGAATTCAGCATCTGGGAGCTGAGATCCACCTGATCCGTGACATGATGGAT
CCCGTCCACACAGGTGGCCTCCATGACTTCTGCTGACAGCTTTAGAGTCTGTTATGAGCACATCCAGA
AGGAAGACATGAGGCCGACCATCTGCCCGGCACTGGGACGCTAGAGATCTCTGG

ACGCGTACGCGGCCGCTCGAG - GFP Tag - GTTTAA

Protein Sequence:

>MG216819 representing NM_146228
 Red=Cloning site Green=Tags(s)

MSSSEEADLLRLEEVSFTTLARTISLILQPLLLADPEPSDPCGKECLRLQLHESAQRLWYVTEQSLLS
 LRQRLYHPPSKGLEAVLLL SNADHVLQAHMEYIKSYTDCVVAQAFQKVKRSEFWRSQRKALRQLSSG
 SSEGSVGTTCQALRQPLSQHVQKYL LLLSLRDTLDESHAQELVMHAITLFGNLQSFMGQALDQAVAT
 QALWHSLSRRLRDVLCSPAHRLLQDSQDIPVVVTP LRAERVL LFDDSL VLLQGHNTHTFDLKL VVWKPGQ
 DKCVLHILTPEEEISFCTRDPQGVVWQWKVTQAVCQALCGKKDFPVLGSGRET SVPPPECRCVAYTFCRE
 GRLCQATYDGEWCRAKPHGKGT LKWPDGRNHVGT FYQGLEHGFICLVPQASEDKFDCYKCHWREGRMCE
 YGICEYGTDEVYKGYFQAGLRHGF GILESAPQAPQPFRTYGHWERGQSRSGYIEEDRDRGERYIGMWQAD
 QRHGPVVVVTQAGVCYQGT FQGDKMAGP GILLCEDDSL YEGTFTRDL TLLGKGKVTFPNGFTLDGSFSSG
 TDKGLYTGVLDTAALPPDPSSTRKRQLGLGTFPVESRWQGVYSPFRDFLRLGCPGEQQEALLGFHTQSS
 RELRKSQECLCCERSHPEDCVGSMEDTLKELLQHRKPKALQQYLKALSNRHLPLGQLLRLMLTFQATY
 SGIGANKHLQEMAQEEVKQHARELWAA YRGLLKV ALQHQQTLEENMETRDLQVHGLLLPLILPSFYSE
 LFTLYLLLHEREDGLYSRGITNLSLFPDTKLLFLDVQKHLWPLKDLKLT SNQRYSLVRDKCFLTATECL
 QKIITTVHPREKLEVLKTYGIEEATVSRVLGCKYKLPMDLLPLLIYVVRARIQHLGAEIHLIRDMMD
 PVHTGGLHDFLLTALESCYEHIQKEDMRPHHLPGHWDARDLW

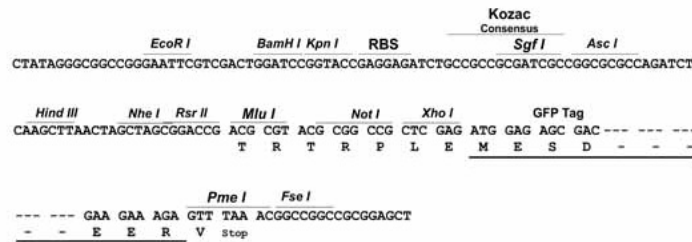
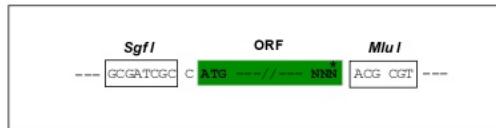
TRTRPLE - GFP Tag - V

Restriction Sites:

SgfI-MluI

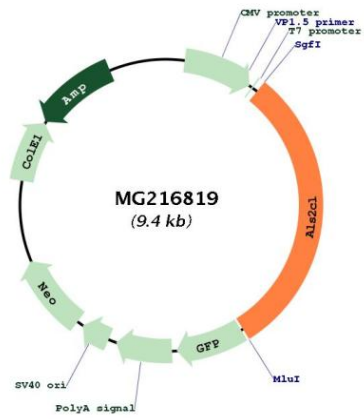
Cloning Scheme:

Cloning sites used for ORF Shuttling:



ACCN:	NM_146228
ORF Size:	2856 bp
OTI Disclaimer:	The molecular sequence of this clone aligns with the gene accession number as a point of reference only. However, individual transcript sequences of the same gene can differ through naturally occurring variations (e.g. polymorphisms), each with its own valid existence. This clone is substantially in agreement with the reference, but a complete review of all prevailing variants is recommended prior to use. More info
OTI Annotation:	This clone was engineered to express the complete ORF with an expression tag. Expression varies depending on the nature of the gene.
Components:	The ORF clone is ion-exchange column purified and shipped in a 2D barcoded Matrix tube containing 10ug of transfection-ready, dried plasmid DNA (reconstitute with 100 ul of water).
Reconstitution Method:	<ol style="list-style-type: none">1. Centrifuge at 5,000xg for 5min.2. Carefully open the tube and add 100ul of sterile water to dissolve the DNA.3. Close the tube and incubate for 10 minutes at room temperature.4. Briefly vortex the tube and then do a quick spin (less than 5000xg) to concentrate the liquid at the bottom.5. Store the suspended plasmid at -20°C. The DNA is stable for at least one year from date of shipping when stored at -20°C.
Note:	Plasmids are not sterile. For experiments where strict sterility is required, filtration with 0.22um filter is required.
RefSeq:	NM_146228.3
RefSeq Size:	5103 bp
RefSeq ORF:	2859 bp
Locus ID:	235633
UniProt ID:	Q60I26
Cytogenetics:	9 60.79 cM
Gene Summary:	Acts as a guanine nucleotide exchange factor (GEF) for Rab5 GTPase. Regulates the ALS2-mediated endosome dynamics (By similarity).[UniProtKB/Swiss-Prot Function]

Product images:



Circular map for MG216819