

## Product datasheet for **MG216799**

### Tagap1 (NM\_147155) Mouse Tagged ORF Clone

#### Product data:

<b>Product Type:</b>	Expression Plasmids
<b>Tag:</b>	TurboGFP
<b>Symbol:</b>	Tagap1
<b>Synonyms:</b>	2610315E15Rik; AA415005; FKSG15
<b>Mammalian Cell Selection:</b>	Neomycin
<b>Vector:</b>	pCMV6-AC-GFP (PS100010)
<b>E. coli Selection:</b>	Ampicillin (100 ug/mL)



[View online »](#)

**ORF Nucleotide Sequence:** >MG216799 representing NM\_147155  
 Red=Cloning site Blue=ORF Green=Tags(s)

TTTTGTAATACGACTCACTATAGGGCGCCGGGAATTCGTGACTGGATCCGGTACCGAGGAGATCTGCC  
 GCCGGATCGCC

ATGCGCGGACTACCGCCGGTGGTGCCGAGGAAGACACGGAGCTGCGCGACCTGCTGGTGCAGACGC  
 TGGAGAACAGCGCGTGTGAACCGCATCAAGGCTGAACTCAGAGCGGCTGTGTTTTAGCACTAGAAGA  
 ACAAGAAAAAGTAGAGGTTAAGATCTTGGTGAATTCCTCATCGACAACCTGCTTTGAGATATTTGGGGAG  
 AACATTCGGACGCGTCCCGCATCACTTCTGACGACTCCCTGGAACACACTGACAGTTGACAGCGTCAA  
 CTCTGCAGAATGACTCGGCTATGACAGCAATGACCCAGATGTGGAGCCACAAGTGGCGCAGCCTCTCC  
 CAACAGGCAACTGGAGGTTCCCACTCCACAATGGCTGGTCTGGATACCGGGGCCACCGGACACTGT  
 GAGTCAAGCTCAGAGTCCAGCGTTAGCATGGTAGTCAGGCTGAAAACTCCATTGTCCAACAAGACAGGC  
 GGTTCTCTGAACCAACATGTCACCCTCACGAGAGTGCCTCGTGGGCCAACATCCAAGCAAAGCTAAC  
 AAGGAGTGAGGACAGCTTCACTCTGTCCCAGGACGCTCCTGTTCTGAAGGCGATGAAGCTGAAGATCCC  
 TTTACAGAGGAAGTCTCCAGCAGTGGACAGCAAACCAAGAGACCTGTGGATTTGAAAAATAAGAAATT  
 GGACCAAGGTTTAGCATCTCCACAGGGACACATAACCAAAGCTTTCTCCAGATCCTCCCAGGCGAATC  
 TTTGGCAGCTCACCTGTGCCTTCTCCATCCTGCCCAAGAGAACTTCTTACCAGACACCAGAGTTTC  
 ACAACAAAGACAGACAAAACCAACCCAGAGAGAAATAGAAAGCACTCCATGTTGTTTTCTTTGCGT  
 CTCACAAGAAAGTGTGCCCGAACCTCCAGCATTGGGTCTGAGAAATCCAAGACTTTTCTAGAGACCA  
 ACTCCAGAAGGACTTGAGGAAAGAGAGCCAACTTTCTGGCAGAATCGTCCAGGAAAATGAGTCAGAAATC  
 CAAAGCAAACATCTTTGGCTTCAGCTTGTCTGGCACCTGGGCCCTCTCAGTCGACAACACGTTCCAGT  
 TAGTGGATATGAGGAAACCAGGAAGCCACCATTTACGAAGAGGCCATTTATACCAGACATCAGGACT  
 CACAGCCTACGGTGGCCAGACAGTTGGGAGTATGAGGTCAAGAATGTTCAAGCCAAGCACAGCGGTGCC  
 CCTGTGCCTTCTCACCATGGAGGTGACCTCAGTGAAGGGACACCTGGTGGACACAGATTGTCTTCTGTGA  
 CTGAGCACTGGACACACAGTCAGACTGTCCATGTCTCTATAGAACTCAGGGGAGATCTGAGCTACACCA  
 GTTGAGGACAGTGTCCGAGTCCATGCAGAAGGCTAAGCTGGACTGTCTTGGGCCACAACACAGCCACTTA  
 GTCTTTGAGGCTGACCAACTCTGCTGTCTAGAGAATCCTACATT

AGCGGACCGACGCGTACGCGGCGCTCGAG - GFP Tag - GTTTAA

**Protein Sequence:** >MG216799 representing NM\_147155  
 Red=Cloning site Green=Tags(s)

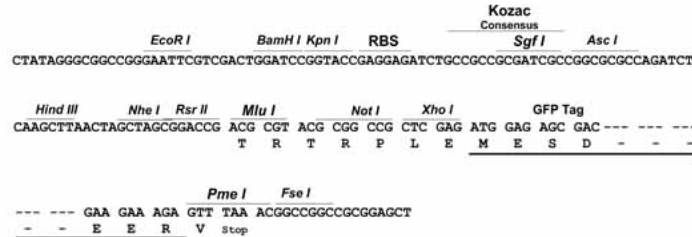
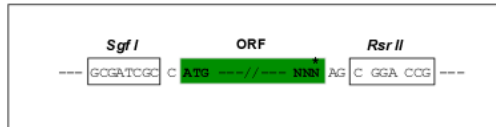
MAATTAAVVAEEDTELRLDLVQTLNSGVLNRIKAEALRAAVFLALEEQEKVEVKILVEFLIDNCFEIFGE  
 NIRTRSRTSDDSLEHTDSSDVSTLQNSAYSNDPVEPTSGAASPNRQLEGPTPTMAGLDTRGHRDTC  
 ESSSESSVSMVRLKNSIVQQDRRFSEPNMSPSRECLVGPTSKQKLTRSEDSFTLSQDASCSEGEAEDP  
 FTTEEVFPAVDSKPKRPVDLKIKNWTQGLASPQGHITKAFSRSSPGESLGSPPVSPSPCKRNFTRHQSF  
 TTKTDKTKPQREIRKHSMLFSFASHKKVLPRTSSIGSEKSKDFSRDQLQKDLRKESSLGRIVQENESEI  
 QSQTSLGFSLSGTWALSVDNTFQLVDMRKPSPSYEEAIYYQTSGLTAYGGQTVGSMRSMFKPSTAVP  
 PVPSHHGGDLSEGTGGHRLSSVTEHWTHSQTVHVSIEIQGRSELHQLRTVSESMQAKLDCLGPQHS  
 LVEADQLCCARES

SGPTRRRLE - GFP Tag - V

**Restriction Sites:** SgfI-RsrII

**Cloning Scheme:**

Cloning sites used for ORF Shuttling:


**ACCN:** NM\_147155

**ORF Size:** 1515 bp

**OTI Disclaimer:** The molecular sequence of this clone aligns with the gene accession number as a point of reference only. However, individual transcript sequences of the same gene can differ through naturally occurring variations (e.g. polymorphisms), each with its own valid existence. This clone is substantially in agreement with the reference, but a complete review of all prevailing variants is recommended prior to use. [More info](#)

**OTI Annotation:** This clone was engineered to express the complete ORF with an expression tag. Expression varies depending on the nature of the gene.

**Components:** The ORF clone is ion-exchange column purified and shipped in a 2D barcoded Matrix tube containing 10ug of transfection-ready, dried plasmid DNA (reconstitute with 100 ul of water).

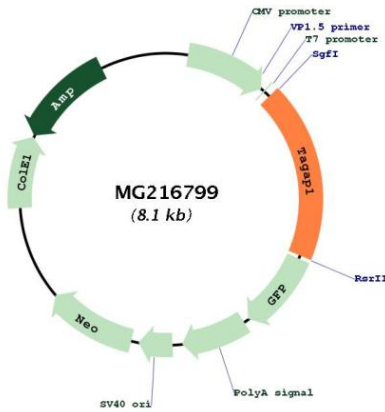
- Reconstitution Method:**
1. Centrifuge at 5,000xg for 5min.
  2. Carefully open the tube and add 100ul of sterile water to dissolve the DNA.
  3. Close the tube and incubate for 10 minutes at room temperature.
  4. Briefly vortex the tube and then do a quick spin (less than 5000xg) to concentrate the liquid at the bottom.
  5. Store the suspended plasmid at -20°C. The DNA is stable for at least one year from date of shipping when stored at -20°C.

**Note:** Plasmids are not sterile. For experiments where strict sterility is required, filtration with 0.22um filter is required.

**RefSeq:** [NM\\_147155.2](#), [NP\\_671511.2](#)
**RefSeq Size:** 2358 bp

RefSeq ORF: 1518 bp  
 Locus ID: 380608  
 UniProt ID: [P0CAX8](#)  
 Cytogenetics: 17 A1

**Product images:**



Circular map for MG216799