

Product datasheet for **MG216798**

Cd163 (NM_001170395) Mouse Tagged ORF Clone

Product data:

Product Type:	Expression Plasmids
Product Name:	Cd163 (NM_001170395) Mouse Tagged ORF Clone
Tag:	TurboGFP
Symbol:	Cd163
Synonyms:	CD163v2; CD163v3
Mammalian Cell Selection:	Neomycin
Vector:	pCMV6-AC-GFP (PS100010)
E. coli Selection:	Ampicillin (100 ug/mL)
ORF Nucleotide Sequence:	>MG216798 representing NM_001170395 Red=Cloning site Blue=ORF Green=Tags(s)

TTTTGTAATACGACTCACTATAGGGCGGCCGGAATTCGTCGACTGGATCCGGTACCGAGGAGATCTGCC
GCC**CGATCGCC**

ATGGGTGGACACAGAATGGTTCTTCTGGAGGTGCTGGATCTCCTGGTTGTAAAAGGTTTGTCCATCTAG
GTTTCTTTGTGGCTGTGAGCTCACTTCTCAGTGCCTCTGCTGTCACTAACGCTCCTGGAGAAATGAA
GAAGGAAGTGAAGTGGCGGGTGGTAAAACAAGTGTAGTGGGAGAGTGGAACTTAAGATCCATGACAAG
TGGGGCACAGTGTGCAGTAACGGCTGGAGCATGAATGAAGTGTCCGTGGTTTCCAGCAGCTGGGATGCC
CAACTTCTATTAAGCCCTTGGATGGGTAAGTCCAGCGCCGGCTCTGGATATATCTGGATGGACAAAGT
TTCTTGTACAGGGAATGAGTCACTCTTTGGGACTGCAACATGATGGGTGGGAAAGCATAAAGTACC
CATGAAAAGATGCTGGAGTGAAGTCTCAGATGGATCTAATTTGGAGATGAGACTGGTGAACAGTGCAG
GCCACCGATGCTTAGGAAGAGTAGAAAATAAGTCCAGGGAAAGTGGGGACGGTGTGTGACGACAAGT
CAGCAAAGATCACGCTTCTGTGATTTGTAACAGCTTGGATGTGGAAGTGCATTAGTTTCTCTGGCTCA
GCTAAATTGGGAGCTGGTTCTGGACCAATCTGGCTCGATGACCTGGCATGCAATGGAAATGAGTCAAGT
TCTGGGACTGCAACACCGGGGATGGGGCAAGCATAAAGTGTGACCATGCTGAGGATGTCCGTGTGATTTG
CTTAGAGGGAGCAGATCTGAGCCTGAGACTAGTGGATGGAGTGTCCAGATGTTTCCAGGAAGATTGGAAGT
AGATTTCAAGGAGATGGGGACCGTGTGTGATGATAAAGTGGATCTCCGGGATGCTTCTGTGGTGTGCA
AGCAACTGGGATGTCCAAGTCCATCAGTGCATTGGTTCGAGTTAATGCCAGTGAAGGATCTGGACAGAT
TTGGCTTGACAACATTTTCATGCGAAGGACATGAGGCAACTCTTTGGGAGTGTAAACCAAGAGTGGGGA
AAGCATTACTGTCATCATAGAGAAGACGCTGGCGTGACATGTTCTGATGGAGCAGATCTGGAAGTATAGAC
TTGTAGGTGGAGGCAGTGCCTGTGCTGGCATTGTGGAGTGGAGATTGAGAAAGTGAAGTGGGAAAGTGTG
TAGCCGAGGCTGGACACTGGCAGATGCGGATGTGGTTTGCAGACAGCTTGGATGTGGATCTGCGCTTCAA
ACCCAGGCTAAGATCTACTCTAAAAGTGGGCAACAAATACGTGGCTCTTCTGGATCTTGAATGGAA
ATGAAACTACTTTTTGGCAATGCAAAAAGTGGCAGTGGGGCGCCTTTCCTGTGATAATTTGGAAGAAGC
CAAAGTACCTGCTCAGGCCACAGGAACCCAGACTGGTTGGAGGAGAAATCCCATGCTCTGGTCTGTG



GAAGTGAACACGGAGACGTGTGGGGCTCCGTCTGTGATTTTGACTTGTCTCTGGAAGCTGCCAGTGTGG
TGTGCAGGGAATTACAATGTGGAACAGTCGTCTATCCTAGGGGGAGCACATTTTGGAGAAGGAAGTGG
ACAGATCTGGGGTGAAGAATCCAGTGTAGTGGGGATGAGTCCCATCTTTCACTATGCTCAGTGGCGCCC
CCGCTAGACAGAACTTGTACCCACAGCAGGGATGTCAGCGTAGTCTGCTCACGATACATAGATATTCGTC
TGGCAGGCGGCGAGTCTCCTGTGAGGGAAGAGTGGAGCTCAAGACACTCGGAGCCTGGGGTCCCCTCTG
CAGTTCTCATTGGGACATGGAAGATGCTCATGTCTTATGTCAGCAGCTGAAGTGTGGGGTTGCCAATCT
ATCCAGAAGGAGCACATTTTGGGAAAGGAGCTGGTCAGGTCTGGAGTCACATGTTCCACTGCACCTGGAA
CTGAGGAACATATAGGAGATTGCCTCATGACTGCTCTGGGTGCGCCGACGTGTTCCGAAGGACAGGTGGC
CTCTGTCTCTGCTCAGGAAACCAATCCAGACACTATTGCCATGTAGTTCATTGTCTCCAGTCCAAACA
ACAAGCTCTACAATCCAAAGGAGAGTGAAGTTCCTGCATAGCAAGTGGCCAGCTTCGCTTGGTAGGTG
GAGGTGGTCGCTGCGCTGGAAGAGTGGAGGTCTACCACGAGGGCTCTTGGGGCACCGTCTGTGATGACAA
TTGGGATATGACTGATGCCAATGTGGTGTGCAAGCAGCTGGACTGTGGCGTGGCAATTAACGCCACTGGC
TCTGCTTACTTCGGGGAAGGAGCAGGAGCTATCTGGCTAGACGAAGTCATCTGCACTGGGAAAGAGTCTC
ATATTTGGCAGTGCCATTCACATGGCTGGGACGCCATAACTGCAGGCACAAAGAAGATGCAGGTGTTAT
CTGCTCCGAGTTCATGTCTCTGAGGCTGACCAACGAAGCCACAAGAAAAGTGCACAGGTGCCTTGAA
GTGTTTTACAATGGTACATGGGGCAGTATTGGCAGTAGCAATATGTCTCCAACCACTGTGGGGTGGTGT
GCCGTCAGCTGGGCTGTGCAGACAACGGGACTGTGAAACCCATACCTTCAGACAAGACACCATCCAGGCC
CATGTGGGTAGATCGTGTGCAGTGTCCAAAAGGAGTTGACACTTTGTGGCAGTGGCCCTCGTCACCTTGG
AAACAGAGACAGGCCAGCCCCTCCTCCAGGAGTCTGGATCATCTGTGACAACAAAATAAGACTCCAGG
AAGGGCATAACAGACTGTTCTGGACGTGTGGAGATCTGGCACAAGGTTCTGGGGAACAGTGTGTGATGA
CTCCTGGGATCTTAATGATGCTAAGGTTGTATGTAAGCAGTTGGGCTGTGGCCAAGCTGTGAAGGCACTA
AAAGAAGCAGCATTGGTCCAGGAAGTGGGCCATATGGCTCAATGAAATTAAGTGTAGAGGGAATGAGT
CTTCCCTGTGGATTGTCTGCCAAACCGTGGAGTCACAGCGACTGTGGGCACAAAGAAGATGCTTCCAT
CCAGTGCCTCCCAAAAATGACTTCAGAATCACATCATGGCACAGGTCACCCACCCTCACGGCACTCTTG
GTTTGTGGAGCCATTCTATTGGTCTCCTCATTGTCTTCTCCTGTGGACTCTGAAGCGACGACAGATTC
AGCGACTTACAGTTTCTCAAGAGGAGAGGTCTTGATACATCAAGTTCAGTACCAAGAGATGGATTCAAA
GGCGGATGATCTGGACTTGCTGAAATCCTCGGAAAATTCCAACAATTCATATGATTTTAATGATGATGGA
CTGACATCTTTGTCTAAATATCTTCTATTTCTGGAATTAAGGGGTCATTACAGAGGCACACTGAGAA
GGAAAATGATAATTTATAATCCACTGAGGTTGGAGTTAAGAAGCCT

ACGCGTACGCGGCCGCTCGAG - GFP Tag - GTTTAA

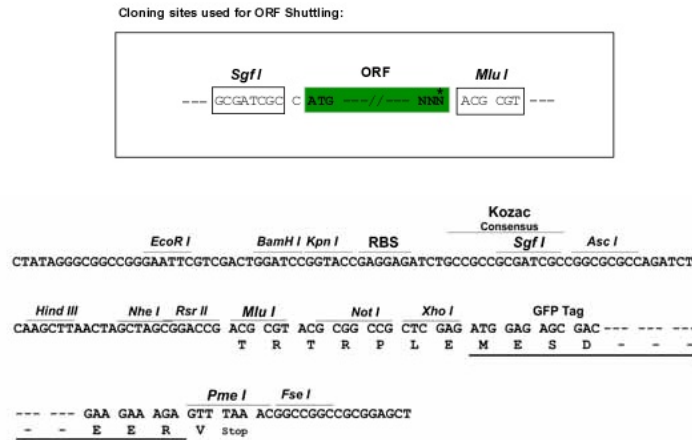
Protein Sequence: >MG216798 representing NM_001170395
 Red=Cloning site Green=Tags(s)

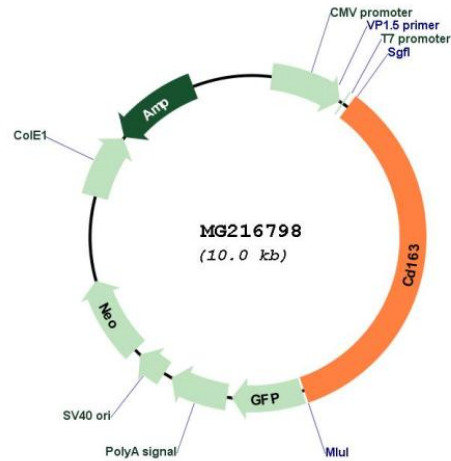
MGGHRMVLLGGAGSPGCKRFVHLGFFVAVSSLLSASAVTNAPGEMKELRLAGGENNCSGRVELKIHDK
 WGTVCNSGWSMNEVSVCQQLGCPTSICALGWANSSAGSGYIWMKVSCTGNESALWDCKHDGWGKHNC
 HEKDAGVTCSDGSNLEMRLVNSAGHRCLGRVEIKFQGWGTVCDDNF SKDHASVICKQLGCGSAISFSGS
 AKLGAGSGPIWLDDLACNGNESALWDCKHRGWGKHNCDAEDVGVICLEGADLSLRLVDGVSRCRLE
 RFQGEWGTVCDDNWDLRDASVVCCKQLGCPTAISAIGRVNASEGSGQIWL DNI SCEGHEATLWECKHQEWG
 KHYCHHREDAGVTCSDGADLELRLVGGGSRGAGIVEVEIQKLTGKMCSRGWTLADADVVC RQLGCGSALQ
 TQAKIYSKTGATNTWLPFGSCNGNETTFWQCKNWQWGLSCDNFEEAKVTCSGHREPRLVGG EIPCSGRV
 EVKHGDVWGSVCDL SLEAASVVCRELQCCTVVSILGGAHFEGSGQIWGEEFQCSGD ESHLSLCSVAP
 PLDRTCTHSRDVSVVCSRYIDIRLAGGESSCEGRVELKTLGAWGPLCSSHWMEDAHVLCQQLKCGVAQS
 IPEGAHFKGAGQVWSHMFHCTGTEEHIGDCLMTALGAPTCSEGVASVICSGNQSQTL LPCSSLSPVQT
 TSSTIPKESEVPCIASGQLRLVGGGRCAGRVEVYHEGSWGTVCDDNWDMDANVVC KQLDCGVAINATG
 SAYFGEAGAIWLDEVICTGKESHIWQCHSHGWGRHNCRHKEDAGVICSEFMSLR LRTNEAHKENCGRLE
 VFYNGTWGSISSNMSPTTVGVVCRQLGCADNGTVKPIPSDKTPSRPMWVDRVQC PKGVDLWQCPSSPW
 KQRQASPSQESWII CDNKIRLQEGHTDCSGRVEIWHKGSWGTVCDDSWDLNDAKVVCKQLGCGQAVKAL
 KEAAFPGTGP IWLNEIKCRGNESSLWDCPAKPWSHSDCGHKEDASIQLPKMTSESHHGTGHPTL TALL
 VCGAILLVLLIVFLLWTLKRRQIQRLTVSSRGEVL IHQVQYQEMDSKADDL DLLKSSSENSNNSYDFNDDG
 LTSLSKYLPISGIKKGSFRGTLRRKMIIYNPLRLEFKKP

TRTRPLE - GFP Tag - V

Restriction Sites: SgfI-MluI

Cloning Scheme:



Plasmid Map:


ACCN: NM_001170395

ORF Size: 3477 bp

OTI Disclaimer: The molecular sequence of this clone aligns with the gene accession number as a point of reference only. However, individual transcript sequences of the same gene can differ through naturally occurring variations (e.g. polymorphisms), each with its own valid existence. This clone is substantially in agreement with the reference, but a complete review of all prevailing variants is recommended prior to use. [More info](#)

OTI Annotation: This clone was engineered to express the complete ORF with an expression tag. Expression varies depending on the nature of the gene.

Components: The ORF clone is ion-exchange column purified and shipped in a 2D barcoded Matrix tube containing 10ug of transfection-ready, dried plasmid DNA (reconstitute with 100 ul of water).

Reconstitution Method:

1. Centrifuge at 5,000xg for 5min.
2. Carefully open the tube and add 100ul of sterile water to dissolve the DNA.
3. Close the tube and incubate for 10 minutes at room temperature.
4. Briefly vortex the tube and then do a quick spin (less than 5000xg) to concentrate the liquid at the bottom.
5. Store the suspended plasmid at -20°C. The DNA is stable for at least one year from date of shipping when stored at -20°C.

RefSeq: [NM_001170395.1](#), [NP_001163866.1](#)

RefSeq Size: 4492 bp

RefSeq ORF: 3480 bp

Locus ID: 93671

Cytogenetics: 6 F2

Gene Summary:

Involved in clearance and endocytosis of hemoglobin/haptoglobin complexes by macrophages and may thereby protect tissues from free hemoglobin-mediated oxidative damage. May play a role in the uptake and recycling of iron, via endocytosis of hemoglobin/haptoglobin and subsequent breakdown of heme. Binds hemoglobin/haptoglobin complexes in a calcium-dependent and pH-dependent manner. Induces a cascade of intracellular signals that involves tyrosine kinase-dependent calcium mobilization, inositol triphosphate production and secretion of IL6 and CSF1 (By similarity). [UniProtKB/Swiss-Prot Function]