

Product datasheet for **MG216797**

Slc6a18 (NM_001168645) Mouse Tagged ORF Clone

Product data:

Product Type:	Expression Plasmids
Product Name:	Slc6a18 (NM_001168645) Mouse Tagged ORF Clone
Tag:	TurboGFP
Symbol:	Slc6a18
Synonyms:	B0AT3; D630001K16Rik; Xt2; Xtrp2
Mammalian Cell Selection:	Neomycin
Vector:	pCMV6-AC-GFP (PS100010)
E. coli Selection:	Ampicillin (100 ug/mL)



[View online »](#)

ORF Nucleotide Sequence:

>MG216797 representing NM_001168645
 Red=Cloning site Blue=ORF Green=Tags(s)
 TTTTGAATACGACTCACTATAGGGCGGCCGGAATTCGTCGACTGGATCCGGTACCGAGGAGATCTGCC
 GCCGCGATCGCC

ATGGCACAGGCCTCAGGGATGGACCCGCTTGTGGACATTGAGGATGAAAGACCCAAGTGGGACAACAAC
 TCCAGTACCTCCTGAGCTGCATCGGTTTTGCTGTGGGGCTGGGGAACATATGGAGGTTCCCTACCTGTG
 CCAGACCACGGAGGAGGGCCCTTCTCATCCCTATTTTCATTGCCCTGGTCTTTGAGGGTATCCCGCTT
 TTCTACATCGAGCTTGCCATTGGCCAGCGCCTACGGAGGGGAAGCATTGGAGTGTGGAAGACCATCTCCC
 CTTACCTCGGTGGCGTAGGCCTGGGCTGCTTCTCAGTGTCTTCTGGTCACTTTGACTACAACACGGT
 TCTCTGTGGGTCTTATGGTCTTCTCAACTCCTTCCAACACCCGCTGCCCTGGAGCACATGTCCGCTG
 GATCTCAACAGAACAGGATTTGTGCAGGAATGCCAGAGCAGTGGCACCGTGAGCTACTTCTGGTACCGGC
 AGACTCTGAATATCACATCTGACATCAGCAACACAGGCACTATCCAATGGAAGCTGTTCTCTGCCTGGT
 GGCTGTGGTCAACTGTGTACCTGTGTGTGCATCAGAGGCATTGAGAGCACGGGGAAGGTGATCTACTTT
 ACAGCCTTATCCCTTACCTGGTCTAACCATCTTCTCATCAGAGGTCTTACCTGCCTGGAGCAACAG
 AGGGCCTGATCTACCTGTTTACTCCCAATATGAAGACTCTTCCAGAAATCCACGGGTGTGGTTGGATGCAGC
 CACCCAGATTTTCTTCTCCCTGTCCCTGGCCTTTGGAGGGCATATTGCTTTTGCAAGCTACAACCCACCC
 AGGAACAATTGTGAGAAGGACCGCGTATTATTGCCCTGGTCAACAGCATGACCTCCCTGTATGCATCCA
 TCGCCATCTTCTCCGTCATGGGGTTCAAGGCATCCAATGACTATGGAAGGTGCCTGGACAGAAATATCTT
 GAGCCTCATCAATGAGTTTGACCTTCCAGAGCTTAGCATCTCCAGGGATGAGTACCCATCTGTCTCATG
 TACCTGAATGCCACTCAGACTGCGAGGGTGGCCCAACTTCCCTGAAGACCTGCCATCTGGAAGATTTTC
 TGGATAAGCCACCTGGAAGCAGATCTCCGGGGCCCGTGTCTTGGAGAAGGCTGTGCCAGGCTGACTTTC
 TAGAGTCTGTGAAGCCTCAGTGTCTCCAGGGGTGATCTGCTTTGCCTGTTTCTCTCAGCCATTTGCTTC
 AACTGACGTCTGGAGGCTACTGTTGGAGATCTTTGACAGTTTTGCAGTCTCTGAATTAATCATCT
 TCGCCTTCATGGAAGTGGTGGGAGTCATTACATTTATGGGATGAAACGGAACATTTTCCCTCAAGAGAG
 GAGAAGTCTACCCAGGCTGGGTGCAGGTACCTGTGTCTCTCTCTGCCCTCACTGTGGGTCC
 CTGGAGTTGCTCTGGCTCAGTTACTGTCCAGTACAAACAGAGGTGGAAGGCTACGCATCTGAAAGTGG
 TC

ACGCGTACGCGGCCGCTCGAG - GFP Tag - GTTTAA

Protein Sequence:

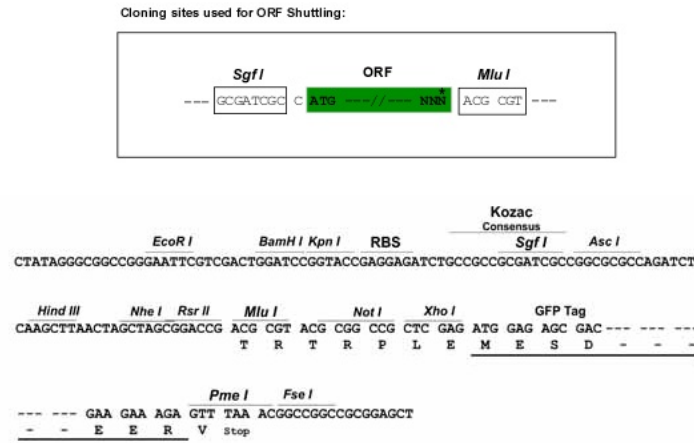
>MG216797 representing NM_001168645
 Red=Cloning site Green=Tags(s)
 MAQASGMDPLVDIEDERPKWLNKLYLLSCIGFAVGLGNIWRFPYLCQTHGGGAFLIPYFIALVFEGIPL
 FYIELAIGQRLRRSIGVWKTISPYLGGVGLGCFSVSFLVSLYNTVLLWVWFFLNSFQHPLPWSTCPL
 DLNRTGFVQEQSSGTVSYFWYRQTLNITSDISNTGTIQWKLFLCLVACWSTVYLCVIRGIESTGKVIYF
 TALFPYLVLTIFLIRGLTLPGATEGLIYLFPTNMKTLQNPVWLDAAATQIFFSLAFGGHIAFASYNPP
 RNNCEKDAVIIALVNSMTSLYASIAIFSVMGFKASNDYGRCLDRNLSLINEFDLPELSISRDEYPSVLM
 YLNATQATARVAQLPLKTHLEDFLDKPTWKQISGARVLGEGCARLTSRVCEASVLPGVICFACFLSAICF
 TLQSGGYWLEIFDSFAASLNLIIIFAFMEVVGVIIHYGMKRNIIPQERRSSTQAGCRSPVCSPPHCGS
 LELLWLSYCPSTNRGRLRIWKVV

TRTRPLE - GFP Tag - V

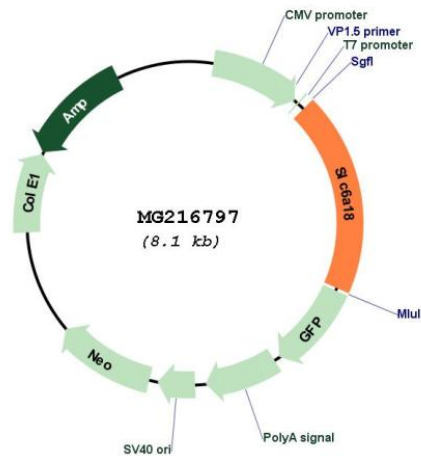
Restriction Sites:

Sgfl-MluI

Cloning Scheme:



Plasmid Map:



ACCN:	NM_001168645
ORF Size:	1542 bp
OTI Disclaimer:	The molecular sequence of this clone aligns with the gene accession number as a point of reference only. However, individual transcript sequences of the same gene can differ through naturally occurring variations (e.g. polymorphisms), each with its own valid existence. This clone is substantially in agreement with the reference, but a complete review of all prevailing variants is recommended prior to use. More info
OTI Annotation:	This clone was engineered to express the complete ORF with an expression tag. Expression varies depending on the nature of the gene.
Components:	The ORF clone is ion-exchange column purified and shipped in a 2D barcoded Matrix tube containing 10ug of transfection-ready, dried plasmid DNA (reconstitute with 100 ul of water).
Reconstitution Method:	<ol style="list-style-type: none">1. Centrifuge at 5,000xg for 5min.2. Carefully open the tube and add 100ul of sterile water to dissolve the DNA.3. Close the tube and incubate for 10 minutes at room temperature.4. Briefly vortex the tube and then do a quick spin (less than 5000xg) to concentrate the liquid at the bottom.5. Store the suspended plasmid at -20°C. The DNA is stable for at least one year from date of shipping when stored at -20°C.
RefSeq:	NM_001168645.1 , NP_001162116.1
RefSeq Size:	4037 bp
RefSeq ORF:	1545 bp
Locus ID:	22598
UniProt ID:	O88576
Cytogenetics:	13 40.13 cM
Gene Summary:	Functions as a sodium and chloride-dependent neutral amino acid transporter in kidneys (PubMed:26240152, PubMed:19478081). Required CLTRN for cell surface expression and for its amino acid transporter activity (PubMed:26240152).[UniProtKB/Swiss-Prot Function]