

Product datasheet for **MG216786**

B3galt5 (NM_001122993) Mouse Tagged ORF Clone

Product data:

Product Type: Expression Plasmids
Product Name: B3galt5 (NM_001122993) Mouse Tagged ORF Clone
Tag: TurboGFP
Symbol: B3galt5
Synonyms: 1190002B21Rik; AU045265; b3Galt-V
Mammalian Cell Selection: Neomycin
Vector: pCMV6-AC-GFP (PS100010)
E. coli Selection: Ampicillin (100 ug/mL)
ORF Nucleotide Sequence: >MG216786 representing NM_001122993
Red=Cloning site Blue=ORF Green=Tags(s)

TTTTGTAATACGACTCACTATAGGGCGGCCGGAATTCGTCGACTGGATCCGGTACCGAGGAGATCTGCC
GCC**CGATCGCC**

ATGGCTCACATGAAGACAAGGCTAGTTTACGCCTCCATTCTCATGATGGGCGCACTCTGCTTGTACTTCA
GCATGGATTCTTTCAGAGAACTCCCGTTTGTGTTTTAAGAAAAGTCACGGGAAGTTCCTTCAGATTCCGGA
TATAGACTGCAAGCAGAAGCCGCTTTCCTGGTGTGCTGGTGACGTCTCACAAGCAGCTGGCCGCT
CGCATGGCCATCCGCAAGACGTGGGTAGAGAGACATCTGTGCAGGGCCAACAGGTGAGGACCTTCTTCC
TTCTGGGGACCTCCGACAGCACCAGGAGATGGACGCCACAACCTGGAGAGCGAGCAGCACCAGCGACAT
TATCCAGAAGGACTTCAAGGATGCCTACTTCAACCTGACCTGAAGACCATGATGGGTATGGAATGGGTC
TACCACCTTTGTCTCAGACAGCTTACGTGATGAAAACGGACTCTGACATGTTTGTGAATGTTGGCTATC
TGACGGAAGTGTGCTAAAGAAAAACAAAACGACCAGGTTCTTCACAGGCTACATAAAGCCCCACGACTT
TCCCATCCGGCAGAAGTCAACAAGTGGTTTGTGAGTAAGTTCGAATATCCCTGGGACAGGTACCCACCT
TTTTGTCCGGTACTGTTATGTCTTTCCAGCGACGTGGCGATCCAAGTATAACAAGTCTCAGAGAGCG
TTCCGTTTCATCAAGCTGGAGGATGTGTTTGTGGGCTCTGCTTGCCAAGCTAAAGATCCGGCCGGAGGA
GCTGCACACCAACAGACCTTCTCCCTGGCGGTTTACGCTTTCCGTTGCGCCTTTCAGAAAATTGTG
GCATGCCATTTTATGAAGCCCCAGGACCTGCTCACTTACTGGCAAGCACTGGAGAAGCTCGAAAGAACAGG
ACTGTCCTGCTGTC

ACGCGTACGCGGCCGCTCGAG - GFP Tag - GTTTAA



[View online »](#)

Protein Sequence: >MG216786 representing NM_001122993
 Red=Cloning site Green=Tags(s)

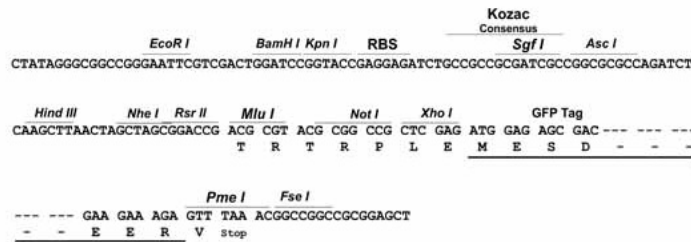
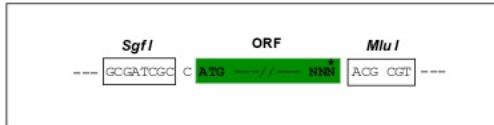
MAHMKTRLVYASILMMGALCLYFSMDSFRELPFVFKKSHGKFLQIPDIDCKQKPPFLVLLVTSSHKQLAA
 RMAIRKTWGRETSVQGGQVRTFFLLGTSDESTHEMATTLESEQHRDIIQKDFKDAYFNLTLKTMGMWV
 YHFCPQTAYVMKTDSDMFVNVGYLTELKLNKNTTRFFTYIKPHDFPIRQKFNKWFVSKFEYPWDRYPP
 FCSGTGYVFSDDVAIQVYVNVSESVPFIKLEDVFLGLCLAKLIRPEELHTKQTFPPGGLRFVSVCRFQKIV
 ACHFMPKQDLLTYWQALENSKEQDCPAV

TRTRPLE - GFP Tag - V

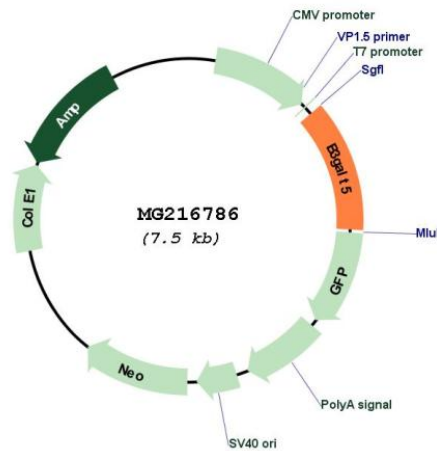
Restriction Sites: SgfI-MluI

Cloning Scheme:

Cloning sites used for ORF Shuttling:



Plasmid Map:



ACCN: NM_001122993

ORF Size: 924 bp

OTI Disclaimer:	The molecular sequence of this clone aligns with the gene accession number as a point of reference only. However, individual transcript sequences of the same gene can differ through naturally occurring variations (e.g. polymorphisms), each with its own valid existence. This clone is substantially in agreement with the reference, but a complete review of all prevailing variants is recommended prior to use. More info
OTI Annotation:	This clone was engineered to express the complete ORF with an expression tag. Expression varies depending on the nature of the gene.
Components:	The ORF clone is ion-exchange column purified and shipped in a 2D barcoded Matrix tube containing 10ug of transfection-ready, dried plasmid DNA (reconstitute with 100 ul of water).
Reconstitution Method:	<ol style="list-style-type: none">1. Centrifuge at 5,000xg for 5min.2. Carefully open the tube and add 100ul of sterile water to dissolve the DNA.3. Close the tube and incubate for 10 minutes at room temperature.4. Briefly vortex the tube and then do a quick spin (less than 5000xg) to concentrate the liquid at the bottom.5. Store the suspended plasmid at -20°C. The DNA is stable for at least one year from date of shipping when stored at -20°C.
RefSeq:	NM_001122993.1 , NP_001116465.1
RefSeq Size:	5281 bp
RefSeq ORF:	927 bp
Locus ID:	93961
UniProt ID:	Q9J167
Cytogenetics:	16 C4
Gene Summary:	Catalyzes the transfer of Gal to GlcNAc-based acceptors with a preference for the core3 O-linked glycan GlcNAc(beta1,3)GalNAc structure. Can use glycolipid LC3Cer as an efficient acceptor. Also catalyzes the transfer of Gal to the terminal GalNAc unit of the globoside GB4, thereby synthesizing the glycolipid GB5, also known as the stage-specific embryonic antigen-3 (SSEA-3).[UniProtKB/Swiss-Prot Function]