

Product datasheet for **MG216783**

Ece2 (NM_177942) Mouse Tagged ORF Clone

Product data:

| | |
|---------------------------|--|
| Product Type: | Expression Plasmids |
| Product Name: | Ece2 (NM_177942) Mouse Tagged ORF Clone |
| Tag: | TurboGFP |
| Symbol: | Ece2 |
| Synonyms: | 1810009K13Rik; 6330509A19Rik; 9630025D12Rik; BB127715; Ece-2 |
| Mammalian Cell Selection: | Neomycin |
| Vector: | pCMV6-AC-GFP (PS100010) |
| E. coli Selection: | Ampicillin (100 ug/mL) |



[View online »](#)

ORF Nucleotide Sequence:

>MG216783 representing NM_177942
 Red=Cloning site Blue=ORF Green=Tags(s)

TTTTGTAATACGACTCACTATAGGGCGGCCGGAATTCGTCGACTGGATCCGGTACCGAGGAGATCTGCC
 GCC**CGCATCGCC**

ATGAACGTCGCGCTGCACGAGTTGGGTGGCGGAGGCAGTGTGGGATTCCAGAAGAGGACAAGACAACCTGT
 TTGGTTCACACACACAGTTGGAGCTGGTCTTGGCAGGCCTCATTCTAGTGTGGCTGCCCTCTTTTGGG
 CTGCCTCGTGGCTCTGTGGGTCCACAGAGACCCAGCCCATAGCACCTGCGTCACAGAAGCCTGCATTTCGA
 GTAGCTGGAAAAATCCTGGAGTCTCTAGACCGTGGGGTGGAGCCCTGTCAGGACTTTTACCAGTTCTCCT
 GTGGAGGCTGGATTTCGAAGAAACCCTCTACCCAATGGACGTTCTCGCTGGAACACCTTCAACAGCCTCTG
 GGACCAGAACCAGGCCATACTGAAGCACCTACTTGAGAACACCCTTTCAATTCCAGCAGTGAAGCTGAG
 AGGAAGACTCGGAGTTTCTACCTGTCCTGCCTACAGTCGGAGCGCATTGAGAAGCTAGGAGCCAAGCCAC
 TTAGAGACCTCATTGACAAGATCGGTGGTTGGAACATAACGGGGCCTTGGGACGAGGACAGCTTCATGGA
 TGTGCTCAAGGCAGTCGACAGGACCTACAGAGCCACCCCTTCTTACCCTCTACGTCAGTCTGATTCT
 AAGAGTTCTAACAGCAATATCATCCAGGTGGACCAGTCTGGGCTTTTTCTGCCCTCTCGAGATTACTACC
 TAAATAGAAGTCCAATGAGAAAGTTCTCACTGCCTACCTGGACTACATGGTGGAGCTGGGAGTGTCTGT
 GGGTGGACAGCCGACCTCCACTCGGGAGCAGATGCAGCAGGTGTGGAGCTGGAGATACAGCTGGCTAAC
 ATCACTGTGCCCCAGGACCAGCGCGTGTGAGGAGAAGATCTATCACAAGATGAGCATCTCAGAGCTGC
 AGGCTCTCGCGCCCGCGTGGACTGGCTGGAGTTCTTTCTTTCTTGTATCGCCACTTGAGTTGGGTGA
 TTCTGAGCCTGTGGTGGTGTATGGGACTGAGTATTTACAGCAGGTGTGGAGCTCATCAACCGTACTGAA
 CCAAGCATCCTGAACAATTACCTAATTTGGAACCTGGTACAGAAGACGACCTCAAGCCTTGACCAGCGCT
 TTGAGACTGCACAGGAGAACTGCTGGAGACCCTACGGTACCAAGAAGTCTGCACTCCGAGGTGGCA
 GACCTGCATCTCCAATACAGATGATGCCCTTGGCTTGGCTCTGGGTTCACTCTTTGTGAAAGCCACATTT
 GACCGACAAAGCAAGGAAATCGCCGAGGGGATGATCAATGAAATCCGCTCTGCTTTTGAGGAGACCTGG
 GAGACTTGGTTTGGATGGATGAGAAGACCCGGCTGGCAGCCAAGGAGAAAGCAGATGCCATCTATGATAT
 GATTGGTTTCCCTGATTTTCATCTGGAGCCAAAGAGCTGGATGATGTTTATGATGGGTATGAAGTCTCT
 GAAGATTCTTTTTCCAAAACATGTTGAATCTGTACAACCTTCTCAGCTAAGGTGATGGCTGACCAGCTCC
 GCAAACCTCCCAGCCGAGACCAGTGGAGCATGACACCTCAGACCGTGAACGTTACTACCTTCCAACCAA
 GAATGAAATCGTCTTCCCTGCTGGCATCTTGCAGGCCCTTCTATGCTCACAACCATCCAAGGCCTTG
 AACTTTGGTGGCATCGGCGTAGTGATGGGCCATGAGTTGACACATGCCTTTGATGACCAAGGGCGTGAGT
 ATGACAAAAGAAGGAATCTGCGTCTTGGTGGCAGAATGAGTCACTGACGGCTTTCAGAACCATACAGC
 CTGCATGGAAGAACAGTACAGCCAGTACCAGGTCAATGGAGAGAGGCTCAATGGACTCCAGACCCCTGGG
 GAAAACATCGCCGATAATGGGGGCTTAAGGCTGCTTACAATGCTTACAAGCATGGCTGAGAAAGCATG
 GGGAGGAGCAGCCGCTGCCTGCTGTGGGCTCACCAATCACCAGCTTTTCTTCGTGGGATTTGCTCAGGT
 GTGGTCTCGGTCCGCACACCAGAGAGCTCTCACGAGGGGCTGGTGACCGACCCACAGCCCTGCCCGT
 TCCGAGTGTGGGCACTCTCTCAACTCCCAGACTTCTTCCGGCACTTCGGCTGCCCTGTCGGCTCCC
 CCATGAACCCAGGGCAGCTATGTGAGGTGTGG

ACGCGTACGCGGCCGCTCGAG - GFP Tag - GTTTAA

Protein Sequence: >MG216783 representing NM_177942
 Red=Cloning site Green=Tags(s)

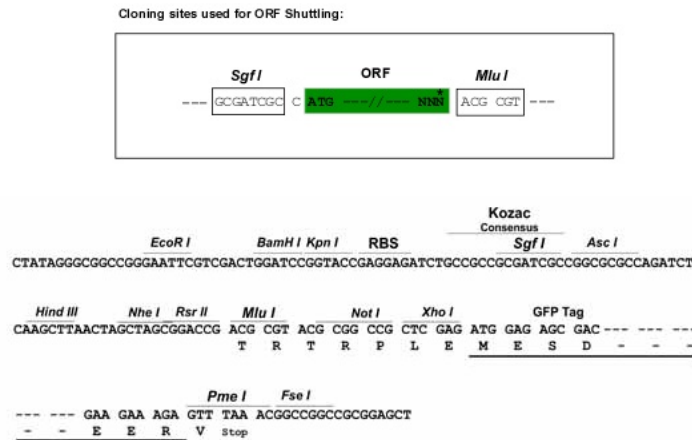
```

MNVALHELGGGSGVGFQKRTRQLFGSHTQLELVLAGLILVLAALLLGLVALVWHRDPAHSTCVTEACIR
VAGKILESIDRGVSPCQDFYQFSCGGWIRRNPLPNGRSRWNTFNSLWDQNQAILKHLLENTTFNSSSEAE
RKTRSFYL SCLQSERIEKLGAKPLRDLIDKIGGWNITGPWDEDSFMDVLKAVAGTYRATPFVTVVSADS
KSSNSNIIQVDQSGFLP SRDYLNRTANEKVL TAYLDYMVELGVLLGGQPTSTREMQQVLELEIQLAN
ITVPDQRRDEEKIYHKMSISELQALAPAVDWLEFLSFLLSPELGDSEPVVYGYTEYLQQVSELINRTE
PSILNNYL IWNLVQKTTSSLDQRFETAQEKLLETLYGTTKKSCTPRWQTCISNTDDALGFALGSLFKATF
DRQSKEIAEGMINEIRSAFEETLGDLVWMEKTRLAAKEKADAIYDMIGFPDFILEPKELDDVYDGYEVS
EDSFFQNLNLNLFSAKVMADQLRKPPSRDQWSMTPQTVNAYYLPKNEIVFPAGILQAPFYAHNHPKAL
NFGGIGVVMGHELTHAFDDQGREYDKEGNLRPWWQNESL TAFQNHACMEEQYSQYQVNGERLNLQTLG
ENIADNGGLKAAYNAYKAWLRKHGEEQPLPAVGLTNHQLFFVGFAQVWC SVRTPESSHEGLVTDPHSPAR
FRVLGTLNSRDFLRHF GCPV GSPMNP GQLCEVW
  
```

TRTRPLE - GFP Tag - V

Restriction Sites: SgfI-MluI

Cloning Scheme:



ACCN: NM_177942

ORF Size: 2202 bp

OTI Disclaimer: The molecular sequence of this clone aligns with the gene accession number as a point of reference only. However, individual transcript sequences of the same gene can differ through naturally occurring variations (e.g. polymorphisms), each with its own valid existence. This clone is substantially in agreement with the reference, but a complete review of all prevailing variants is recommended prior to use. [More info](#)

OTI Annotation: This clone was engineered to express the complete ORF with an expression tag. Expression varies depending on the nature of the gene.

Components: The ORF clone is ion-exchange column purified and shipped in a 2D barcoded Matrix tube containing 10ug of transfection-ready, dried plasmid DNA (reconstitute with 100 ul of water).

Reconstitution Method:

1. Centrifuge at 5,000xg for 5min.
2. Carefully open the tube and add 100ul of sterile water to dissolve the DNA.
3. Close the tube and incubate for 10 minutes at room temperature.
4. Briefly vortex the tube and then do a quick spin (less than 5000xg) to concentrate the liquid at the bottom.
5. Store the suspended plasmid at -20°C. The DNA is stable for at least one year from date of shipping when stored at -20°C.

RefSeq: [NM_177942.1](#), [NP_808811.1](#)

RefSeq Size: 3042 bp

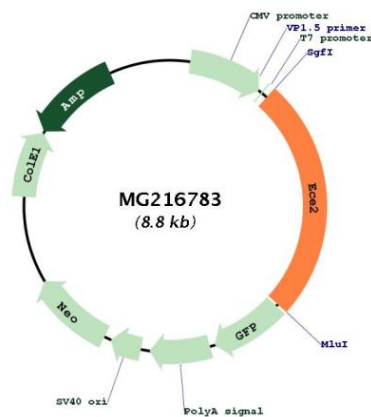
RefSeq ORF: 2205 bp

Locus ID: 107522

Cytogenetics: 16 B1

Gene Summary: Converts big endothelin-1 to endothelin-1. Also involved in the processing of various neuroendocrine peptides, including neurotensin, angiotensin I, substance P, proenkephalin-derived peptides, and prodynorphin-derived peptides (By similarity). May play a role in amyloid-beta processing (PubMed:12464614).[UniProtKB/Swiss-Prot Function]

Product images:



Circular map for MG216783