

Product datasheet for **MG216768**

Ece2 (NM_139293) Mouse Tagged ORF Clone

Product data:

Product Type:	Expression Plasmids
Product Name:	Ece2 (NM_139293) Mouse Tagged ORF Clone
Tag:	TurboGFP
Symbol:	Ece2
Synonyms:	1810009K13Rik; 6330509A19Rik; 9630025D12Rik; BB127715; Ece-2
Mammalian Cell Selection:	Neomycin
Vector:	pCMV6-AC-GFP (PS100010)
E. coli Selection:	Ampicillin (100 ug/mL)



[View online »](#)

ORF Nucleotide
Sequence:

>MG216768 representing NM_139293
Red=Cloning site Blue=ORF Green=Tags(s)

TTTTGTAATACGACTCACTATAGGGCGGCCGGAATTCGTCGACTGGATCCGGTACCGAGGAGATCTGCC
GCCGCGATCGCC

ATGAACGTCGCGCTGCACGAGTTGGGTGGCGGAGGCAGTATGGTGGAGTACAAACGTGCTAAGCTTCGGG
ATGAAGAATCACCAGAGATTACAGTTGAAGGCAGGGCCACCCGGACTCACTGGAGGTGGGATTCCAGAA
GAGGACAAGACAAGTGTGGTTTACACACACAGTTGGAGCTGGTCTTGGCAGGCCTCATTCTAGTGTG
GCTGCCCTTCTTTGGGCTGCCTCGTGGCTCTGTGGTCCACAGAGACCCAGCCATAGCACCTGCGTCA
CAGAAGCCTGCATTTCGAGTAGCTGGAATACTCTGGAGTCTCTAGACCGTGGGTGAGCCCTGTCAGGA
CTTTTACCAGTTCTCCTGTGGAGGCTGGATTCGAAGAAACCTCTACCCAATGGACGTTCTCGTGGAAC
ACCTTCAACAGCCTCTGGGACCAGAACCAGGCCATACTGAAGCACCTACTTGAGAACACCACTTTCAATT
CCAGCAGTGAAGCTGAGAGGAAGACTCGGAGTTTCTACCTGTCTGCCTACAGTCGGAGCGCATTGAGAA
GCTAGGAGCCAAGCCACTTAGAGACCTCATTGACAAGATCGGTGGTTGGAACATAACGGGGCCTTGGGAC
GAGGACAGCTTCAATGGATGTGCTCAAGGAGTCGACAGGGACCTACAGAGCCACCCCTTCTTACCGTCT
ACGTCACTGCTGATTCTAAGAGTTCTAACAGCAATATCATCCAGGTGGACCAGTCTGGGCTTTTTCTGCC
CTCTCGAGATTACTACCTAAATAGAAGTCCAATGAGAAAGTTCTCACTGCCTACCTGGACTACATGGTG
GAGCTGGGAGTGTCTGGGTGGACAGCCGACCTCCACTCGGGAGCAGATGCAGCAGGTGCTGGAGCTGG
AGATACAGCTGGTAACATCACTGTGCCCCAGGACCAGCGCGTGATGAGGAGAAGATCTATCACAAGAT
GAGCATCTCAGAGCTGCAGGCTCTCGCGCCCGCGTGGACTGGCTGGAGTTCCTTTCTTTCTTGTATCG
CCACTTGAGTTGGGTGATTCTGAGCCTGTGGTGGTGTATGGGACTGAGTATTTACAGCAGGTGTCGGAGC
TCATCAACCGTACTGAACCAAGCATCCTGAACAATTACCTAATTTGGAACCTGGTACAGAAGACGACCTC
AAGCCTTGACCAGCGCTTTGAGACTGCACAGGAGAACTGCTGGAGACCCTCTACGGTACCAAGAAGTCC
TGCACTCCGAGGTGGCAGACCTGCATCTCCAATACAGATGATGCCCTTGGCTTGTCTGGTTCCTCT
TTGTGAAAGCCACATTTGACCGACAAAGCAAGGAAATCGCCGAGGGGATGATCAATGAAATCCGCTCTGC
TTTTGAGGAGACCCTGGGAGACTTGGTTTGGATGGATGAGAAGACCCGGCTGGCAGCCAAGGAGAAAGCA
GATGCCATCTATGATATGATTGGTTTCCCTGATTTATCCTGGAGCCAAAGAGCTGGATGATGTTTATG
ATGGGTATGAAGTCTCTGAAGATTCTTTTTTCCAAAACATGTTGAATCTGTACAACCTCTCAGCTAAGGT
GATGGCTGACCAGCTCCGCAAACCTCCCAGCCGAGACCAGTGGAGCATGACACCTCAGACCGTGAACGCT
TACTACCTTCCAACCAAGAAATGAAATCGTCTTCCCTGCTGGCATCTTGCAGGCCCTTCTATGCTCACA
ACCATCCAAGGCCTTGAACCTTGGTGGCATCGGCGTAGTGATGGCCATGAGTTGACACATGCCTTTGA
TGACCAAGGGCTGAGTATGACAAGAAGGGAATCTGCGTCTTGGTGGCAGAATGAGTCACTGACGGCT
TTCCAGAACCATACAGCCTGCATGGAAGAACAGTACAGCCAGTACCAGGTCAATGGAGAGAGGCTCAATG
GACTCCAGACCCTGGGGGAAAACATCGCCGATAATGGGGCCTTAAGGCTGCTTACAATGCTTACAAAGC
ATGGCTGAGAAAGCATGGGGAGGAGCAGCCGCTGCCTGCTGTGGGGCTCACCAATCACCAGCTTTTCTTC
GTGGGATTTGCTCAGGTGTTGCTCGGTCCGCACACCAGAGAGCTCTCACGAGGGGCTGGTGACCGACC
CCCACAGCCCTGCCGTTTCCGAGTGTGGGACTCTCTCCAACCTCCGAGACTTCTTCCGGCACTTCGG
CTGCCCTGTGGCTCCCCATGAACCCAGGGCAGCTATGTGAGGTGTGG

ACGCGTACGCGGCCGCTCGAG - GFP Tag - GTTTAA

Protein Sequence: >MG216768 representing NM_139293
 Red=Cloning site Green=Tags(s)

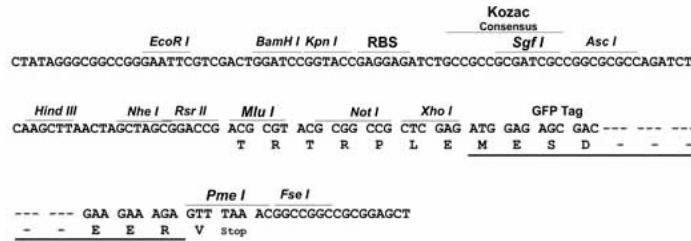
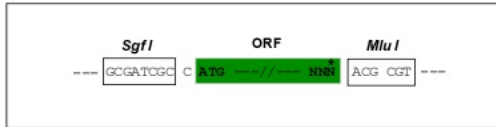
MNVALHELGGGSMVEYKRAKL RDEESPEITVEGRATRDSLEVGFQKRTRQLFGSHTQLELVLAGLILVL
 AALLLGLVALWVHRDP AHSTCVTEACIRVAGKILESLDRGVSPCQDFYQFSCGGWIRRNPLPNGRSRWN
 TFNSLWDQNQA I LKHLENTTFNS SSEAERKTRSFYL SCLQSERIEKLGAKPLRDLIDKIGGWNITGPWD
 EDSFMDVLKAVAGTYRATPF FTVVYSADSKSSNSNI IQVDQSGLFLPSRDYYLNRTANEKVL TAYLDYMV
 ELGVLLGGQPTSTREQMQVLELEIQLANITVPQDQRRDEEKIYHKMSISELQALAPAVDWLEFLSFLLS
 PLELGDSEPVVYGYTEYLQQVSELINRTEPSILNNYLIWNLVQKTTSSL DQRFETAQEKLLETLYGTTKS
 CTPRWQTCISNTDDALGFALGSLFVKATFDRQSKEIAEGMINEIRSAFEETLGDLVWMDKTRLAKEKA
 DAIDYDMIGFPDFILEPKELDDVYDGYEVSEDSFFQNMNLNLFSAKVMADQLRKPPSRDQWSMTPQT VNA
 YYLPTKNEIVFPAGILQAPFYAHNHPKALNFGGIGVVMGHELTHAFDDQGREYDKEGNLRPWQNESLTA
 FQNHTACMEEQYSQYQVNGERL NGLQTLGENIADNGGLKAAYNAYKAWLRKHGEEQPLPAVGLTNHQLFF
 VGFAQVWC SVRTPESSHEGLVTDPHSPARFVLTLSNSRDFLRHF GCPVGSMPMNPGLCEVW

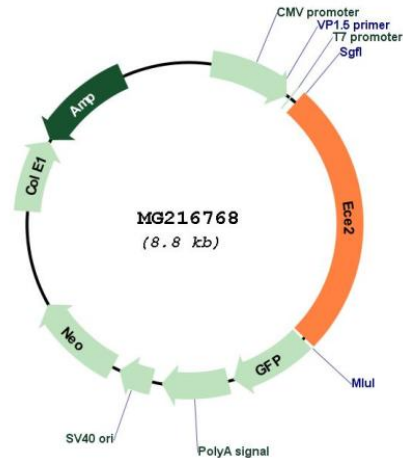
TRTRPLE - GFP Tag - V

Restriction Sites: SgfI-MluI

Cloning Scheme:

Cloning sites used for ORF Shutting:



Plasmid Map:


ACCN: NM_139293

ORF Size: 2289 bp

OTI Disclaimer: The molecular sequence of this clone aligns with the gene accession number as a point of reference only. However, individual transcript sequences of the same gene can differ through naturally occurring variations (e.g. polymorphisms), each with its own valid existence. This clone is substantially in agreement with the reference, but a complete review of all prevailing variants is recommended prior to use. [More info](#)

OTI Annotation: This clone was engineered to express the complete ORF with an expression tag. Expression varies depending on the nature of the gene.

Components: The ORF clone is ion-exchange column purified and shipped in a 2D barcoded Matrix tube containing 10ug of transfection-ready, dried plasmid DNA (reconstitute with 100 ul of water).

Reconstitution Method:

1. Centrifuge at 5,000xg for 5min.
2. Carefully open the tube and add 100ul of sterile water to dissolve the DNA.
3. Close the tube and incubate for 10 minutes at room temperature.
4. Briefly vortex the tube and then do a quick spin (less than 5000xg) to concentrate the liquid at the bottom.
5. Store the suspended plasmid at -20°C. The DNA is stable for at least one year from date of shipping when stored at -20°C.

RefSeq: [NM_139293.2](#), [NP_647454.2](#)

RefSeq Size: 3129 bp

RefSeq ORF: 2292 bp

Locus ID: 107522

UniProt ID: [B2RQR8](#)

Cytogenetics: 16 B1

Gene Summary: Converts big endothelin-1 to endothelin-1. Also involved in the processing of various neuroendocrine peptides, including neurotensin, angiotensin I, substance P, proenkephalin-derived peptides, and prodynorphin-derived peptides (By similarity). May play a role in amyloid-beta processing (PubMed:12464614).[UniProtKB/Swiss-Prot Function]