

Product datasheet for **MG216760**

Rab3gap2 (NM_001163754) Mouse Tagged ORF Clone

Product data:

Product Type:	Expression Plasmids
Tag:	TurboGFP
Symbol:	Rab3gap2
Synonyms:	1110059F07Rik; 2010002H18Rik; 5830469C09; AI851069; AW743433; mKIAA0839; RAB3-GAP150
Mammalian Cell Selection:	Neomycin
Vector:	pCMV6-AC-GFP (PS100010)
E. coli Selection:	Ampicillin (100 ug/mL)

ORF Nucleotide Sequence: >MG216760 representing NM_001163754
Red=Cloning site Blue=ORF Green=Tags(s)

TTTTGTAATACGACTACTATAGGGCGCCGGGAATTCGTGACTGGATCCGGTACCGAGGAGATCTGCC
GCCGCGATCGCC

ATGGCCTGCTCCATCGTCCAGTTCTGCTCCTTCCAGGACCTGCAGTCCGCGCGGACTTCTATTCCCTC
ACCTGCGGGAGGAGACCCCGCGCCCTGAAGAGGGACCCGAGTAAAACATCAAGCTGGGAAGATGATAG
TTGGGGAGCATGGGAAGAGACAGAGCCCGAGAACCTGAAGAAGAAGGAAATACTTCTAAAAACAAAA
AATTCCTGGCTTCAAGAATGTGTTTTATCCTTATCTCAACCAAGTACCTTATGGTTATAGCTCGGGAGC
AGAAGGCCGATTCTAGTGCCAAAATGGAAACATGGTGATAAAGGGAAGGAAGAAATGCAGTTTGCTGT
TGGTTGGAGCGGCTCCGTAAGTGCAGAGGAAGGGGAGTATGTAACCAAGTCCCTGTGCATCCCACTGGCG
AGTCAGAAGAGGAGTTCAGTGGCGCCCTGACTGGACCTGCATTGTGGTGGGCTTCACATCGGGCTATG
TGGCTTCTACACTGAGAGTGGAGTCTTTGCTTGCACTTTTGAATGAGGACAAAGTCTTACGCT
TAAATGCAGGACCTATGAAATCCCAAGACACCCTGGAGTACTGAGCAGAATGAAGAACTGAGCATCTTA
TATCCAGCCGCTTGTGACGATTGATGGATTTAGTCTCTTTCAGTCTCTTCGAGCCTGTGCAAAACCAAG
TAGCAAAAGCTGCAGCATCAGGCAATGAGAACATTCAGCCACCACCATAGCTTATAAGAAATGGGGTCT
TCAAGATATTGACACCATCATCGATCATGCTAGTATTGGTATTATGACTCTGTCAACATTTGATCAAATG
AAGACTGCTTCCAATATAGGTGGATTTAATGCAGCAATTAAGAAACAGTCCGCTGCCATGTCTCAGTACA
TCACTGTGGGCTCCAGTCCGTTCACTGGCTTCTTCTATGCTCTCGAGGGAAGCAGCAGCCTCTGTTGTC
TCACGTGCGCTCGCTGTTGCAAGTAAGCTGACCTCCGCCCTTTCAGTGCCGCGAGTGGTTGGCTTGGT
TGGAAAAGCAAGCATGAGGAAGACTGTCCAGAAGCAGAAGCCCAAGATGGAGCCGCGCCACCCACTAG
CTGTGAGATTTGGACTTCCGGATTCTAGACGCCACGGAGAAAGCATATGCCTGTCTCCTTGTAAATACCCT
GGCAGCAGTACAGATGATTTTGGCAGGGTTATCTTACTGGACGTAGCCCGAGGAATCGCAATACGGATG
TGGAAAGGGTATCGGGATGCGCAGGTCCGATGGATTCAAATGTAGAGGACCTCCATGAACGAGTGCCAG
AAAAGGGGGCTTCTCCCTTTGGAATACTCAAGGGCCAGTCCGGTTCGCTCAGTTCCTTGTGATCTA
TGCACCACGAAGGGGATTCTGGAAGTGTGGAACACACAGCAAGGACCTAGAGTGGGAGCTTCAACGTG
GGTAAACACTGCAGGCTACTCTATCTGGCTACAAAATCATGGGCTTAAACAACGTGACAAGTCAGAGTT



GGCAGCCTCAGACTTACCAGATCTGTCTTGTGGACCCTGTGTCTGCAAGCGTGAAGGCGGTGAACGTGCC
TTTCCATCTAGCGCTGAGTGATAAAGAAGAGTGAAAGAGCCAAGGACCTGCACTTAGTGAAGAAATATCA
GCCCTGCTGAGAGCCAAGTCCCCAGGCCGGATTTCATTTGAAACCGAAAATAAGGAGTTGATCTTGATA
TTAAGTACCCTGCAACCAAGAAACAAGCTCTGGAAAGCATTGGCCAGTGACCGTTTATCGTTTTCTG
CCTTAGAAATGTTACTCAGACTTTAATGGACACTTAAAAAACCAAGAGCTTGAGTCTGTTGATGAAGGA
CTGCTACAGTTTTGTGCCAGTAAATAAAACTACTACATCTTTATGAATCTGTCAGTCAGTTAAATACGC
TTGACTTTCACTCAGACACCCCGTTCTCTGATAATGATCTGGCTGTCTTGCTAAGGCTGGATGATAAGGA
ACTCCTGAAACTCCGGGCTTGTAGAGAAATATAACAAGAAAACACCAAGCCACCGTGCCTTTTCT
GAGGATGCAGACAGAGTGTACCTGTCAAGACCTTCTGGAGTATCTAGAGTATGAGAAGGATGCACTGA
GCATAAGGAAGGTGGAGAGGAGGAGTGTGTGGCTCTAGGCAGTTTCTTTTTCTGGAAGTGTTCGATGG
AGAAAGCTCCACTGAAGAGATGTGCCACAGCCTGGAGTCGGCTGGACTCAGCCCTCAGCAGTTACTGTCT
TGCTCCTAAAGTGTGGCTTTCGAAGGAAAAAGACATTTGGACAACCACAGTCTGTCTGCTGCCTTC
ATACCATGTGTCCCTGTGAGCAAGATGAAAGTGGCCATCGATGAGACGTGGGATTCTCAGTCTGTGTC
CCCCTGGTGGCAGCAGATGCGCATGGCTGCATCCAGTCAGAGAACAGCGGCGCTGCCCTGTGTCTGCA
CATGTGGGCATTCTGTGGCCGACAGATGTCCAGCGGTGCTACAGATAAGAAATTTCCAGATGGTGT
TGGATGCAGATGCCGAAGCCCTCACGGACTCCTGGGAAGCTCTCTCTGGACACGGAGTACTGGAAGCT
CCTGCTGAGACAGCTGGAGGACTGCCTCATACTCCAGACTCTGCTGCATAGCAAATGAGCCCCCAGCC
GCCAAAGCACCATCTCTGCAGTCGGAGCCACTGCCAAGGCTTTCTGTTAAAAAGCTGTTAGAAGGGGGGA
AAGGTGGTATTGCAGACAGTGTAGCCAAGTGGATTTAAACAGGACCTCAGCCCTGAATTTGTTGAAATG
TGCCAAACAAAGAGAGAGATGTAGAAAATCCAGACGAACCCAGAGAAGGTATTACACGAAGTTCCCTGAG
GTGTCAGAGGTGGAGATAGACCTAGGAGCCGTACCAGACTTGTCCACCTGGCCTACGAGCAGTTCCCTT
GTAGCCTTGAGCTTGATGTGCTGCACGCCACTGCTGCTGGGAGTATGTGGTTCAGTGAACAAAGACCC
GGAGGAAGCTCGCTTTTGGTTAGATCCATAGAACACTTGAAGCACATTCTAATCCACACGTTCAAAT
GGTATCGCGCTGATGATGTGGAATACGTTCTTGGTGAAAAGGTTTTCTGCTGCTACTTACCTAATGGATA
AGGTTGGGAAATCTCAAAGGATAGGTTGTGCCAAGGGATGTGGGGATGAGCGACACGGCGCTGACATC
CTTCTCGGCTCCTGCCTGGAACCTTCTCAGACGTCATTGGAGGCTGACATTAGCAGGGATGAAGTCCAG
GTGCCCGTCTGGACACTGAGGACGCCTGGCTGTCCGTGGAAGGCCCATCTCTATAGTGGAGCTGGCGC
TGGAGCAGAAGCCTATCCACTACCCACTGGTGGAGCACCATCCGTCCTGTGCTCCATCCTGTACGCGTC
CATGCGCTTTTCTCTGAAGAGTGTGAAGCCACTCGCCCTTTTGGACAGCAAGGGAAAGAATGCATTTTTT
AAGGATTTAACTTCAATTCAGTTATTACCTAGTGGGAAATGGATCCAAATTTTATTCAGTAAGACAAC
AGTTCTTACTGAAAGTTGTCAGTGCAGCTGCCAGGCTCAGCATTCCAAGGACAAAGATCCCTCTGCAGA
AGCAGCAAACACTCATTGAAAAGACCTCAACTGGCCAGGTTTGGCTGTGGACTTAGCCCATCACCTCAA
GTGAGCGCAGATGTCATTGAAAGCCTATGTGGGGAGCTGTACAGCCATGGAGCTGACCTCTTAGGAG
AGGAGGCCATTTTTCAAGTTCAGGACAAAGAAGTTCTGGCGTCTCAGCTGCTAGTGTGACCGGGCAAAG
GCTGGCTCACGCGCTTTCCACACCCAGACGAAGGAAGGCATGGAGCTGCTGGCCAGACTCCCAGCCACA
CTCTGCACCTGGCTGAAGGCAATGAACCCCTCAGGATCTTCAGAACTGGCGTGCCTATTGCAGCAACAG
CTAAACTCGTGCATAAAGTGTGAGCTCCTGCCAGAGAAGCACGGGCAGTACAGCCTCGCCTTACACCT
CATCGATGCCGTGGAAGCCATGGGACTTTA

AGCGGACCGACGCGTACGCGGCGCTCGAG - GFP Tag - GTTTAA

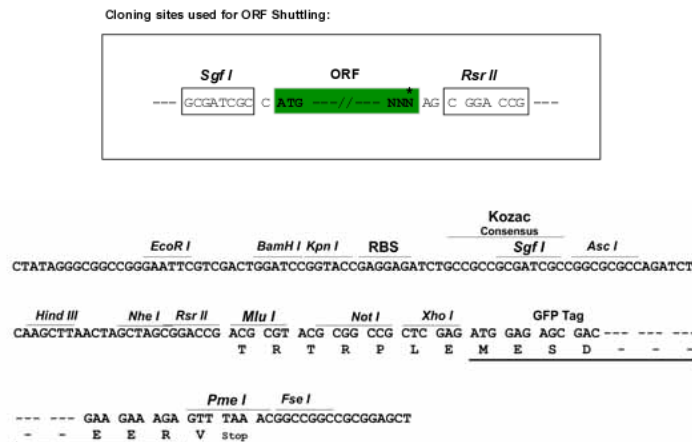
Protein Sequence: >MG216760 representing NM_001163754
 Red=Cloning site Green=Tags(s)

MACSIVQFCSFQDLQSARDFLFPHLREETPGALKRDPSTSSWEDDSWGAWEEETEPREPEEEGNTSKTQK
 NSWLQECVLSLSPSTDLMIAREQKAAFLVPKWKHGDKGKEEMQF AVGWSGSVSAEEGEYVTSALCIPLA
 SQKRSSTGRPDWTCIVVGFTSGYVRFYTESGVLLLAQLLNEDKVLQKCRTYEIPRHPGVTEQNEEL SIL
 YPAAIVTIDGFSLFQSLRACRNQVAKAAASGNENIQPPPLAYKKWGLQDIDTIIDHASIGIMTLPFDQM
 KTASNIGGFNAAIKNSPPAMSQYITVGSSPFTGFFYALEGSTQPLLSHVALAVASKLTSALFSAASGWL
 WKSKHEEDTVQKQPKMEPATPLAVRFGLPDSRRHGESICLSPCNTLAAVTDDFGRVILLDVARGIAIRM
 WKGYRDAQVGIQIVEDLHERVPEKGGFSPFGNTQGPSRVAQFLVIYAPRRGILEVWNTQQGPRVGFV
 GKHCRLLYPGYKIMGLNNVTSQSWQPQTYQICLVDPVSASVKAVNVPFHLALSDKKSERAKDLHLVKKLS
 ALLRAKSPRPDSFETIKELILDIKYPATKKQALE SILASDRLSFCLRNVTQTLMDTLKNQELSVDEG
 LLQFCASKLKLHLYESVSQLNTLDFHSDTPFSDNDLAVLLRLDDKELLKLRALLEKYQENTKATVRF
 EDADRVLVKTFLYLEYKDAL SIRKVGEEECVALGSFFFWKCLHGESSSTEEMCHSLESAGLSPQQLS
 LLLSVWLSKEKDILDKPQSVCLHTMLSLLSKMKVAIDETWDSQSVSPWQOMRMACIQSENSGAALLSA
 HVGHSVAAQMSGATDKKF SQMVLDAEAL TDSWEALSLDTEYWKLLLRQLEDCLILQTL LHSKLSPPA
 AKAPSLQSEPLPRLSVKLLLEGGKGIADSVAKWIFKQDLSPELLKCANERDVENDEPREGITRSPFE
 VSEVEIDLGAVPDLLHLAYEQFPCSELDVLAHCCWEYVQWKNDEPEARFLVRSIEHLKHLNPHVQN
 GIALMMWNTFLVKRFSAAATYLMKVKSPKDRLCRRDVGMSDTALTSFLGSCLELLQTSLEADISRDEVQ
 VPVLDTEDAWLSVEGPI SIVELALEQKPIHYPLVEHHSVLC S ILYASMRFS LKSVKPLALFDSKGNFAF
 KDLT SIQLLP SGEMDPNFISVRQQFLLKVVSAAVQAQHSKDKDPSAEAAANTHWKDLNWPGLAVDLAHLQ
 VSDDVIRRHVYV GEL YSHGADLLGEEAIFQVQDKEVLASQLLVL TGQRLAHALFHTQTKEGMELLARLPPT
 LCTWLKAMNPQDLQNTGVPIAATAKLVHKVMELLPEKHGQYSLALHLIDAVEAMATL

SGPTRRRLE - GFP Tag - V

Restriction Sites: SgfI-RsrII

Cloning Scheme:

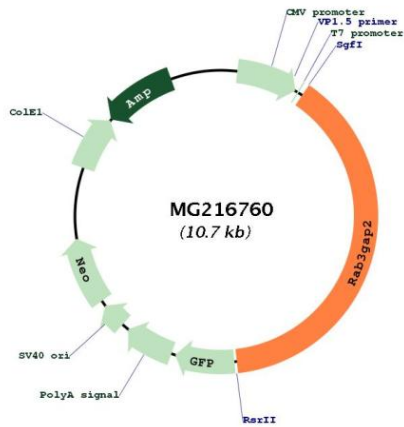


ACCN: NM_001163754

ORF Size: 4161 bp

OTI Disclaimer:	The molecular sequence of this clone aligns with the gene accession number as a point of reference only. However, individual transcript sequences of the same gene can differ through naturally occurring variations (e.g. polymorphisms), each with its own valid existence. This clone is substantially in agreement with the reference, but a complete review of all prevailing variants is recommended prior to use. More info
OTI Annotation:	This clone was engineered to express the complete ORF with an expression tag. Expression varies depending on the nature of the gene.
Components:	The ORF clone is ion-exchange column purified and shipped in a 2D barcoded Matrix tube containing 10ug of transfection-ready, dried plasmid DNA (reconstitute with 100 ul of water).
Reconstitution Method:	<ol style="list-style-type: none">1. Centrifuge at 5,000xg for 5min.2. Carefully open the tube and add 100ul of sterile water to dissolve the DNA.3. Close the tube and incubate for 10 minutes at room temperature.4. Briefly vortex the tube and then do a quick spin (less than 5000xg) to concentrate the liquid at the bottom.5. Store the suspended plasmid at -20°C. The DNA is stable for at least one year from date of shipping when stored at -20°C.
Note:	Plasmids are not sterile. For experiments where strict sterility is required, filtration with 0.22um filter is required.
RefSeq:	NM_001163754.1 , NP_001157226.1
RefSeq Size:	7003 bp
RefSeq ORF:	4164 bp
Locus ID:	98732
UniProt ID:	Q8BMG7
Cytogenetics:	1 H5
Gene Summary:	Regulatory subunit of a GTPase activating protein that has specificity for Rab3 subfamily (RAB3A, RAB3B, RAB3C and RAB3D). Rab3 proteins are involved in regulated exocytosis of neurotransmitters and hormones. Rab3 GTPase-activating complex specifically converts active Rab3-GTP to the inactive form Rab3-GDP. Required for normal eye and brain development. May participate in neurodevelopmental processes such as proliferation, migration and differentiation before synapse formation, and non-synaptic vesicular release of neurotransmitters (By similarity).[UniProtKB/Swiss-Prot Function]

Product images:



Circular map for MG216760