

## Product datasheet for **MG216745**

### **E2f8 (NM\_001013368) Mouse Tagged ORF Clone**

#### **Product data:**

Product Type:	Expression Plasmids
Product Name:	E2f8 (NM_001013368) Mouse Tagged ORF Clone
Tag:	TurboGFP
Symbol:	E2f8
Synonyms:	4432406C08Rik; AA410048
Mammalian Cell Selection:	Neomycin
Vector:	pCMV6-AC-GFP (PS100010)
E. coli Selection:	Ampicillin (100 ug/mL)



[View online »](#)

**ORF Nucleotide Sequence:**

>MG216745 representing NM\_001013368  
 Red=Cloning site Blue=ORF Green=Tags(s)

TTTTGTAATACGACTCACTATAGGGCGGCCGGAATTCGTCGACTGGATCCGGTACCGAGGAGATCTGCC  
 GCC**GCGATCGCC**

ATGGAGAACCAAAAGGAAAACCTCTTTTCTGAGCCACATAAAAGGGGACTGATGAAAAGCCCCCTGCATC  
 CGTCCTCGAAGGCCAACATGGTGTGGCTGAGATCCAGCCTGACTTGGGCCCTCTAACACACCAACCAA  
 GCCCAAGGAAGTCTCCAAGGAGAGCCATGGACCCACAGCAACCTGAAAATGCTCATCAGCGCCGTG  
 AGCCCCGAGATCCGAAGTCGAGATCAGAAAAGGGGCTGTCTGACAACCGAAGTGCATTACCTGAAGCTA  
 GAGACTGTTTGCACGAACACTTATCAGGAGACGAATTTGAGAAATCCCAGCCGAGTCGGAAGGAGAAGAG  
 CTTGGGGTTGCTATGCCACAAATTCCTAGCGCGGTACCCCAAGTACCCCAACCCTGCTGTGTATAACGAC  
 ATCTGCCTGGACGAGGTGGCCGAGGAGCTCAATGTTGAACGTGGCGGATTTATGACATTGTGAATGTCC  
 TAGAGAGCCTGCACATGGTGAGCCGCTTGCCAAAACAGGTACACTTGGCATGGCCGGCACAACCTCAC  
 CAAAACCTCGGGACGCTGAAGAGTGTGGGGAAGAGAACAAGTACGCTGAGCAGATCATGATGATCAAA  
 AGGAAAGAATATGAGCAAGAGTTTGATTTTATCAAGAGCTGTGGCATAGAGGACCACGTGATCAAGTCAC  
 ACACTGGCCAGAATGGGCATTAGACATGTGCTTCGTAGAACTCCCTGGAGTAGAATTCGGGCAGCTTC  
 TGTAAACAGCCGCAAGACAAGTCTTACGCGTGATGAGCCAGAAGTTTGTGATGCTGTTCTTGGTGTG  
 ACGCCTCAGATAGTGAGCCTGGAATGCTGCCAAGATTTAATTGGGGAAGACCACGTGGAAGATCTGG  
 ATAAAAGCAAGTATAAAACAAAATTAGGAGGCTGTATGACATTGCTAATGTCCTGAGTAGCTTGGATCT  
 TATCAAGAAAGTCCATGTTACAGAAGAAAGAGGTGCAAAACAGCTTTTAAATGGACGGGCCAGAAATC  
 AGCCCAACAACAGTGGTCCAGCCCCATCATGCCTCTTCTGCCTCCTTAGAGGCTGAGCAGTCTGCCAA  
 AAGAACTGTGCCAAAACCTTCTCTACGCGGGGAAACCCAGCTTCACTCGACCCCGTCCCTCAT  
 CAAGTTGGTAAAGAGCATAGAAAATGATCGGAGGAAGATCAGTTCGCTCCAGCAGCCCTGTCAAGAGC  
 AACAAAGCTGAGAGTTCTCAAAATTCACACCCGTCGCAAAACAAAATGGCTCAGCTCGCCGCTATTTGCA  
 AGATGCAGTTGGAAGAGCAGTCAAGTGAACCCAGGAAGAAAGTAAAAGTAAACCTAGCAAGATCTGGGCA  
 CTACAAACCACTGGCTCCCCTGGACCCTACAGTGAACACTGAGCTAGAACTGCTTACACCGTCCCTTATC  
 CAGCCCCGCGGTGGTCCCCTGATCCCTAGCCATTGTCTGACAGTGCCTGTGATCTACCTCAGG  
 CCCCTTCGGGCCATCCTATGCCATCTACTTACAACCTGCCAAGCCAAATGTTGACACCACCCCTGG  
 CCTGAGCCCAACCGTCTGCCACCCAGCCCTCTAATGCTACTGGATCCAAGACCCTACAGACGCCCT  
 GCTGAGAAGACGGCCACAGACGCCGCCACAACCGAAGCTTGCAGCCAGCACCAGAAAGCATGGTGCTA  
 AGCATCGAAGCAAGGAGACGACCGGAGATCGGGGTACAAAGAGGATGATCACCGCGGAGGACAGTGGTCC  
 CAGTTCTGTAAAGAAACCTAAAGAGGACCTGAAAGCGCTTGAGAAGTCCCCACCCACGCCCTGTTT  
 CCATCAGGATACCTAATCCCTCTTACCCAGTGTCTATCCCTAGGGCCAGACTCTGTGTTGTCTAACACTG  
 AAAACTCAGGTACACCCTCTCCAACCACCGGATCTATGGCTCCCCATTGCAGGTGTGATCCCAGTGGC  
 ATCATCGGAACACTGCTGTGAATTTCCCCATTCCATGTGACACCTCTGAAACTTATGGTCTCCCCA  
 ACATCTATGGCGCCGTACCTGTTGGGAACAGCCAGCCCTCACTCCGGCCACCCTGCTCCCGCCAGA  
 ACCCAAGCTCGGCTATCGTAACTTTACCCTGCAGCACTTGGACTCATCTCCCGGGCGTGCAGATGTC  
 TGCCAGCCCGGGCTGGAGCTGGCACAGTCCCAGTATCCCACGTGTAGAAGCAGATAACTTGAGCTCT  
 CGGCAAGGAGGGCCACCAACCATGACTCGCCAGTCTGGGCCAGAGCCAACTAAACGGACAACCGTCCG  
 CGGGGACAGGGGACAGCAGCCTGTTCTGTGACACCCAAAGGCTCCAGTTGGTGGCTGAAAATTTCTT  
 CCGTACTCCGGGTGACCAACTAAGCCTACCAGCTCACCTACACAGATTTGATGGTGCTAACAAAAC  
 TCCTTCGGAACCTCTTTGTCCACAGCGCAAACCTGGAAGTCTCAACTGAGGATATCCAC

AGCGGACCGACGCTACGCGGCCGCTCGAG – GFP Tag – GTTTAA

**Protein Sequence:** >MG216745 representing NM\_001013368  
 Red=Cloning site Green=Tags(s)

```

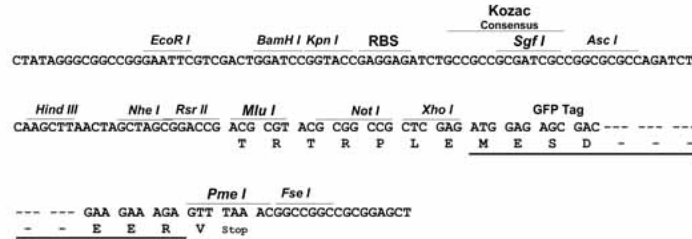
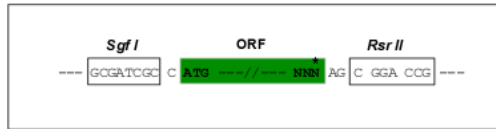
MENQKENLFSEPHKRGLMKSPLHPSSKANMVLAEIQPDLGPLTTPTKPKEVSQGEPTPTANLKMLISAV
SPEIRSRDQKRGLSNRSALPEARDCLEHLGDEFEKSPSRKEKSLGLLCHKFLARYPKYPNPVAVYND
ICLDEVAEELNVERRRIYDIVNVLESLHMVSRLAKNRYTWHGRHNLTKTLGTLKSVGEENKYAEQIMMIK
RKEYEQEFDFIKSCGIEDHVIKSHGTQNGHSDMCFVELPGVEFRAASVNSRKDKSLRVMSQKFVMLFLVS
TPQIVSLEIAAKILIGEDHVEDLTKSKYKTKIRRLYDIANVLSLDDLKIKKVHVTEERGRKPAFKWTGPEI
SPNNSGSSPIMPLPASLEAEQSAKENCANL FSTRGKPSFTRHPSLIKLVKSIENDRRKISSAPSSPVKS
NKAESSQN SPPV PNKMAQLAAICKMQLEEQSSEPRKVKVNLARSGHYKPLAPLDPTVNTLELLTPSLI
QPLGVVPLIP SPLSSAVP VILPQAPSGPSYAIYLQPAQAQMLTPPPGLSPTVCPTQPSNATGSKDPTDAP
AEKTATDAATTGSLQPAPERHGAKHRSKETTGDRTKRMITAEDSGPSSVKKPKEDLKALENVPTPTPLF
PSGYLIPLTQCSSLGPDSVLSNTENSGTSPNHR IYGSP IAGVIPVASEL TAVNFPPFHVTP LKLMVSP
TSMAAVPVGN SPALNSGHPAPAQN PSSAIVNFTLQHLGLISPGVQMSASPGGAGTVPVSPRVEADN LSS
RQRRATNH D SPVLGQSQLNGQP VAGTGAQQPVPVTPKGSQ LVAENFFRTPGGPTKPTSSPYTDFGANKT
SFGTLFVPQRKLEVSTEDIH
  
```

SGPTRRRLE - GFP Tag - V

**Restriction Sites:** Sgfl-RsrII

**Cloning Scheme:**

Cloning sites used for ORF Shuttling:


**ACCN:** NM\_001013368

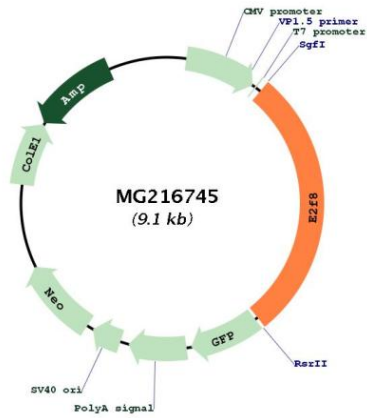
**ORF Size:** 2580 bp

**OTI Disclaimer:** Due to the inherent nature of this plasmid, standard methods to replicate additional amounts of DNA in E. coli are highly likely to result in mutations and/or rearrangements. Therefore, OriGene does not guarantee the capability to replicate this plasmid DNA. Additional amounts of DNA can be purchased from OriGene with batch-specific, full-sequence verification at a reduced cost. Please contact our customer care team at [custsupport@origene.com](mailto:custsupport@origene.com) or by calling 301.340.3188 option 3 for pricing and delivery.

The molecular sequence of this clone aligns with the gene accession number as a point of reference only. However, individual transcript sequences of the same gene can differ through naturally occurring variations (e.g. polymorphisms), each with its own valid existence. This clone is substantially in agreement with the reference, but a complete review of all prevailing variants is recommended prior to use. [More info](#)

<b>OTI Annotation:</b>	This clone was engineered to express the complete ORF with an expression tag. Expression varies depending on the nature of the gene.
<b>Components:</b>	The ORF clone is ion-exchange column purified and shipped in a 2D barcoded Matrix tube containing 10ug of transfection-ready, dried plasmid DNA (reconstitute with 100 ul of water).
<b>Reconstitution Method:</b>	<ol style="list-style-type: none"><li>1. Centrifuge at 5,000xg for 5min.</li><li>2. Carefully open the tube and add 100ul of sterile water to dissolve the DNA.</li><li>3. Close the tube and incubate for 10 minutes at room temperature.</li><li>4. Briefly vortex the tube and then do a quick spin (less than 5000xg) to concentrate the liquid at the bottom.</li><li>5. Store the suspended plasmid at -20°C. The DNA is stable for at least one year from date of shipping when stored at -20°C.</li></ol>
<b>RefSeq:</b>	<a href="#">NM_001013368.1</a>
<b>RefSeq Size:</b>	3705 bp
<b>RefSeq ORF:</b>	2583 bp
<b>Locus ID:</b>	108961
<b>UniProt ID:</b>	<a href="#">Q58FA4</a>
<b>Cytogenetics:</b>	7 B4
<b>Gene Summary:</b>	<p>Atypical E2F transcription factor that participates in various processes such as angiogenesis and polyploidization of specialized cells. Mainly acts as a transcription repressor that binds DNA independently of DP proteins and specifically recognizes the E2 recognition site 5'-TTTC[CG]CGC-3'. Directly represses transcription of classical E2F transcription factors such as E2F1: component of a feedback loop in S phase by repressing the expression of E2F1, thereby preventing p53/TP53-dependent apoptosis. Plays a key role in polyploidization of cells in placenta and liver by regulating the endocycle, probably by repressing genes promoting cytokinesis and antagonizing action of classical E2F proteins (E2F1, E2F2 and/or E2F3). Required for placental development by promoting polyploidization of trophoblast giant cells. Acts as a promoter of sprouting angiogenesis, possibly by acting as a transcription activator: associates with HIF1A, recognizes and binds the VEGFA promoter, which is different from canonical E2 recognition site, and activates expression of the VEGFA gene.[UniProtKB/Swiss-Prot Function]</p>

Product images:



Circular map for MG216745