

## Product datasheet for **MG216734**

### Steap2 (NM\_001103157) Mouse Tagged ORF Clone

#### Product data:

Product Type:	Expression Plasmids
Product Name:	Steap2 (NM_001103157) Mouse Tagged ORF Clone
Tag:	TurboGFP
Symbol:	Steap2
Synonyms:	4921538B17Rik; AI930049; AW045895; IPCA-1; IPCA1; PCANAP1; STAMP1; STMP
Mammalian Cell Selection:	Neomycin
Vector:	pCMV6-AC-GFP (PS100010)
E. coli Selection:	Ampicillin (100 ug/mL)



[View online »](#)

**ORF Nucleotide Sequence:**

>MG216734 representing NM\_001103157  
 Red=Cloning site Blue=ORF Green=Tags(s)

TTTTGTAATACGACTCACTATAGGGCGGCCGGAATTCGTCGACTGGATCCGGTACCGAGGAGATCTGCC  
 GCC**CGGATCGCC**

ATGGAATCCATCTCTATGATGGGAAGCCCTAAGAGCCTGGAGACGTTTTTGCCTAATGGCATAAATGGTA  
 TCAAAGACGCAAGGCAGGTCACCGTGGGGTGATAGGAAGTGGGATTTTGCCAAGTCTCTGACCATTCCG  
 GCTTATTAGATGTGGCTACCACGTGGTCATAGGAAGCAGAAATCCCAAGTTTGCATCAGAATTTTTCTCT  
 CACGTGGTAGACGTCACCCACCATGAAGATGCTTTAACAAAAACAAATATAATATTCGTGGCTATCCATA  
 GAGAACATTACACCTCCTTGTTGGGACCTGAGACATCTGCTTGTGGGCAAAATCCTCATTGATGTGAGCAA  
 CAACATGAGAGTAAACCAGTACCAGAATCCAATGCAGAGTACCTGGCTTCATTATCCCGGACTCCTTG  
 ATTGTCAAAGGATTTAATGTGATCTCAGCTTGGGCACTCAGTAGGTCCAAGGATGCCAGCCGCCAGG  
 TTTATATATGCAGCAACAATATCCAAGCTCGACAGCAGGTTATCGAGCTCGCCCGCCAGCTGAATTTTAT  
 TCCTGTTGACTTGGGATCTTTGCGTCAGCCAAGGAGATTGAAAACCTACCTCTGCGACTGTTTACTCTC  
 TGAGGGGGGCCAGTGGTAGTAGCCATAAGCTTGGCCACATTTTTCTTTCTTTATTCTTTGTGAGAGATG  
 TGATACATCCATATGCCAGAAACCAGCAGAGTGACTTTTACAAGATCCCAATTGAGATTGTGAACAAAAC  
 CTTGCCGATCGTCGCCATCACCTGCTGTCTCTGGTGTACCTGGCTGGCCTCCTGGCAGCTGCGTATCAG  
 CTTTATTATGGCACTAAGTACCGCCGATTTCCCGCGTGGCTGGATACTTGGCTGCAGTGCAGGAAACAGC  
 TGGGATTGCTGAGCTTCTTCTTTCAGTTGTTACAGTACGCTACAGCCTCTGCTTACCAATGAGGAGGTC  
 GGAAAGATACCTGTTCTCAACATGGCTTATCAGCAGGTTATGCCAATATTGAGAACCGGTGGAACGAG  
 GAGGAGGCTGGAGGATTGAGATGTACATTTCTTTGGCATCATGAGCCTGGGCTTGTGTCCCTGCTGG  
 CGGTCACCTCCATCCCATCAGTGAAGCAAGCTTTGAACTGGAGAGAGTTTCACTTCCAGTCCAGCTACGCT  
 TGGCTACGTCGCCCTGCTCATCAGACCTTCCAGTGTTAATTTACGGATGGAAGCGTGCCTTTGCAGAA  
 GAGTACTACCGCTTTTACACACCACAAACTTCGTTCTTGCCCTCGTTTTGCCCTCCATTGTAATTTCTGG  
 GTAAGATGATATTACTCTCCATGCATAAGCCGAAAGCTAAAACGAATTAAGGAGGCTGGGAAAAGAG  
 CCAGTTTCTAGACGAAGGCATGGGAGGAGCGGTTCTCATCTGTCCCAGAGAGGGTCACAGTGATG

AG**CGGACCG**ACGCGTACGCGGCCGCTCGAG - GFP Tag - GTTTAA

**Protein Sequence:**

>MG216734 representing NM\_001103157  
 Red=Cloning site Green=Tags(s)

MESISMMGSPKSLETFLPNGINGIKDARQVTVGVI GSGDFAKSLTIRLIRCGYHVIVIGSRNPKFASEFFP  
 HVVDVTHHEDALTKTNIIFVAIHREHYTSLWDLRHLVGKILIDVSNMRVNVQYPESNAEYLAFLPDSL  
 IVKGFNVI SAWALQLGPKDASRQVYICSNNIQARQVIELARQLNFI PVDLGSLSAKEIENLPLRFLTL  
 WRGPVVVAISLATFFFLYSFVRDVIHPYARNQQSDFYKIPVIEIVNKTLPVAVITLLSLVYLAGLLAAAYQ  
 LYYGTYRRFPWLDTWLQCRKQLGLLSFFFVAVHVAYSCLPMRRSERYLFLNMYQQVHANIANEAWNE  
 EEVWRIEMYISFGIMSLGLLSLLAVTSIPSVSNALNWFESFIQSTLGYVALLITTFHVLIIYGWKRAFAE  
 EYRYFYTPPNFVLAFLVLPISIVILGKMILLPCISRKLKRIKKGWEKSQFLDEGMGAVPHLSPERVTVM

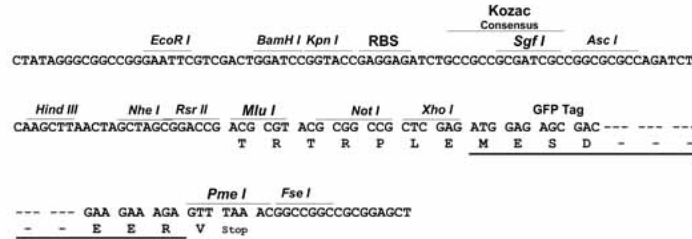
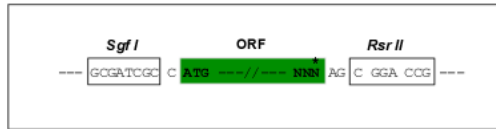
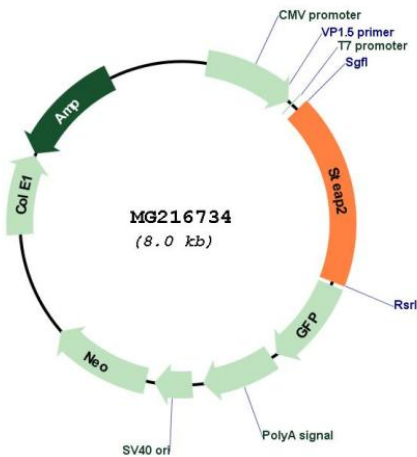
SGP**TRRRLE** - GFP Tag - V

**Restriction Sites:**

Sgfl-RsrII

**Cloning Scheme:**

Cloning sites used for ORF Shuttling:


**Plasmid Map:**

**ACCN:** NM\_001103157

**ORF Size:** 1467 bp

**OTI Disclaimer:** The molecular sequence of this clone aligns with the gene accession number as a point of reference only. However, individual transcript sequences of the same gene can differ through naturally occurring variations (e.g. polymorphisms), each with its own valid existence. This clone is substantially in agreement with the reference, but a complete review of all prevailing variants is recommended prior to use. [More info](#)
**OTI Annotation:** This clone was engineered to express the complete ORF with an expression tag. Expression varies depending on the nature of the gene.

**Components:** The ORF clone is ion-exchange column purified and shipped in a 2D barcoded Matrix tube containing 10ug of transfection-ready, dried plasmid DNA (reconstitute with 100 ul of water).

**Reconstitution Method:**

1. Centrifuge at 5,000xg for 5min.
2. Carefully open the tube and add 100ul of sterile water to dissolve the DNA.
3. Close the tube and incubate for 10 minutes at room temperature.
4. Briefly vortex the tube and then do a quick spin (less than 5000xg) to concentrate the liquid at the bottom.
5. Store the suspended plasmid at -20°C. The DNA is stable for at least one year from date of shipping when stored at -20°C.

**RefSeq:** [NM\\_001103157.2](#), [NP\\_001096627.1](#)

**RefSeq Size:** 10682 bp

**RefSeq ORF:** 1470 bp

**Locus ID:** 74051

**UniProt ID:** [Q8BWB6](#)

**Cytogenetics:** 5 A1

**Gene Summary:** Metalloreductase that has the ability to reduce both Fe(3+) to Fe(2+) and Cu(2+) to Cu(1+). Uses NAD(+) as acceptor.[UniProtKB/Swiss-Prot Function]