

Product datasheet for **MG216728**

Ces1c (NM_007954) Mouse Tagged ORF Clone

Product data:

Product Type:	Expression Plasmids
Tag:	TurboGFP
Symbol:	Ces1c
Synonyms:	Ces-N; Ee-1; Eel; Es-4; Es-N; Es1; Es4; EsN; PESN
Mammalian Cell Selection:	Neomycin
Vector:	pCMV6-AC-GFP (PS100010)
E. coli Selection:	Ampicillin (100 ug/mL)



ORF Nucleotide Sequence: >MG216728 representing NM_007954
 Red=Cloning site Blue=ORF Green=Tags(s)

TTTTGTAATACGACTCACTATAGGGCGCCGGGAATTCGTGCGACTGGATCCGGTACCGAGGAGATCTGCC
 GCCGCGATCGCC

ATGTGGCTCCATGCTCTGGTCTGGGCTTCTTTGCTGTTTGCCCAATTCTGGGACACTCACTTTACCAC
 CTGTGGTGGACACCACACAAGGCAAAGTCTGGGGAAGTATATCAGCTTAGAAGGATTTGAACAGCCTGT
 GGCCGTCTTCTGGGAGTCCCTTTGCCAAGCCCTCTTGGATCTCTGAGGTTTGCTCCACCACAGCCT
 GCAGAGCCCTGGAGCTTCGTGAAGAATGCCACCTCCTACCTCCTATGTCTCCAAGATGCAGGTTGGG
 CAAAGATACTCAGATATGTTTCAGCACCCAAAAGGAGATCCTGCCTCTCAAGATTTGGAAGACTGTCT
 CTACCTGAAATATTTACAGTCTGCCGATTTGACAAAAAGCAGCCAATTGCCTGTGATGGTGTGGATCCAT
 GGAGGTGGACTGGTATAGGCGGAGCATCACCTATAATGGACTAGCTCTCTGCCCATGAGAAGCTGG
 TGGTAGTAACCATTCAATACCGCTGGGTATTTGGGGATTATTTAGCACAGGTGATGAACACAGCCAGG
 AAAGTGGCTCACCTGGACCACTGGCTGCACTACGCTGGGTCCAAGATAACATTGCAAACCTTTGGAGGG
 AACCCGGATTCCGTGACCATCTTTGGAGAGTCACTCAGGGGGTATCAGTGTCTCTGTCCTTGTCTTATCTC
 CTCTGGGCAAGGACCTCTTCCACAGAGCCATTTCTGAGAGTGGTGTGGTATAAATACAAACGTGGGCAA
 GAAGAATATACAGGCTGTGAATGAAATAATAGCTACTTTTCCAGTGTAAATGACACCTCATCAGCTGCC
 ATGTTTCAGTGTCTGGCCAGAAGACAGAGAGTGTGCTTTGGAGATTTGAGGAACTGGTACAGTACA
 ATATCTCCCTGTCCACCATGATTGACGGAGTGGTGTGCTGCAAAGGCACCAGAAGAGATCCTGGCTGAGAA
 GAGTTTCAACACTGTCCCTACATAGTGGGCTTCAACAAGCAAGAGTTTGGCTGGATAATTTCAATGATG
 TTGCAAAATCTACTCCCTGAAGGCAAAATGAATGAGGAAACGGCCAGTCTTCTTTGAGGAGTTTCCACT
 CTGAACCTAACATCTCTGAAAGTATGATTCAGCAGTCAATTGAGCAGTACTTAAGAGGGGTAGATGACCC
 TGCCAAAAAGAGTGTGCTTATCCTGGACATGTTTGGAGATATATTTTTGGTATCCCGGCTGTGCTCTTG
 TCCCGTAGCCTCAGAGATGCTGGAGTGTCCACCTACATGTATGAGTTTCGGTATCGCCCAAGCTTCGTGT
 CTGACAAGAGACCCAGACGGTTGAGGGTGTGATGCGCATGAAATCTTCTTTGATTCGGGGCTCCACT
 ATTAAGAGGGTGCCTCAGAAGAGGAAACCACTCAGCAAGATGGTGTGAAATTTCTGGCCAACTTT
 GCTCGAAATGGGAACCTAATGGGGAGGGGCTGCCTCACTGGCCAGAATATGATGAGCAGGAAGGGTATC
 TACAGATTGGAGCCACTACCCAGCAAGCCAGAGACTGAAAGCAGAGGAAGTGGCTTTCTGGACTGAGCT
 CCTGGCTAAGAATCCACTGAGACAGACCTACTGAACACACAGAACACAAA

ACGCGTACGCGGCCGCTCGAG - GFP Tag - GTTTAA

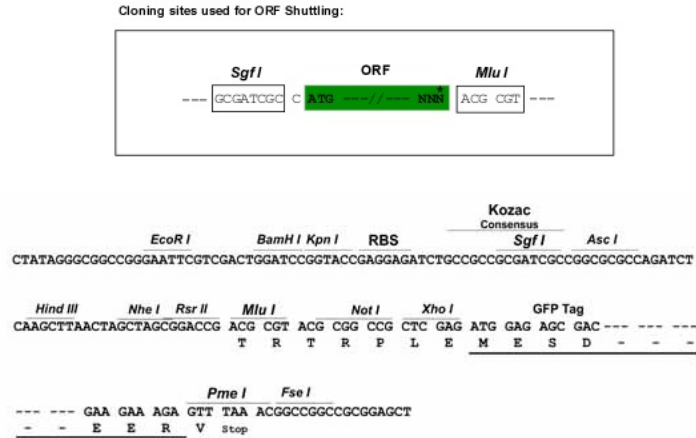
Protein Sequence: >MG216728 representing NM_007954
 Red=Cloning site Green=Tags(s)

MWLHALVWASLAVCPILGHSLLPPVDDTTQGKVLGKYISLEGFEQPVAVFLGVFPFAKPLGSLRFAPPQP
 AEPWSFVNKATSYPPMCSQDAGWAKILSDMFSTEKEILPLKISEDCLYLNIYSPADLTKSSQLPVMVWIH
 GGGLVIGGASPYNGLALSAHENVVVVTIQYRLGIWGLFSTGDEHSPGNWAHLDLAALRWVQDNIANFGG
 NPDSVTIFGESSGGISVSVLVL SPLGKDLFHRAISESGVVINTNVGKKNIQAVNEIIATLSQCNDTSSAA
 MVQCLRQKTESELLEISGKLVQYNI SLSTMIDGVVLPKAPPEILAEKSFNTVPYIVGFNKQEFGWIPMM
 LQNLLPEGKMNEETASLLLRFFHSELNISESMIPAVIEQYLRGVDDPAKKSELILDMFGDIFFGIPAVLL
 SRSLRDAGVSTYMYEFRYRPSFVSDKRPQTVEGDHGDEIFFVFGAPLLKEGASEEETNL SKMVMKFWANF
 ARNGNPNGEGLPHWPEYDEQEGYLQIGATTQQAQRLKAEVAVFWTELLAKNPPETDPTTEHTEHK

TRTRPLE - GFP Tag - V

Chromatograms: https://cdn.origene.com/chromatograms/ja2578_e06.zip

Restriction Sites: SgfI-MluI

Cloning Scheme:


ACCN: NM_007954

ORF Size: 1662 bp

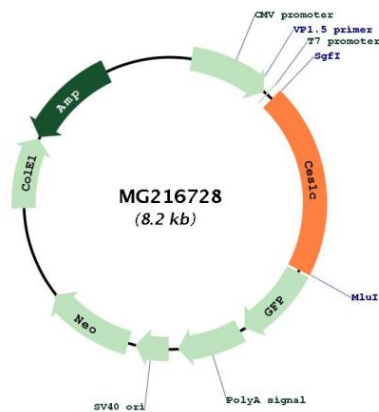
OTI Disclaimer: Due to the inherent nature of this plasmid, standard methods to replicate additional amounts of DNA in E. coli are highly likely to result in mutations and/or rearrangements. Therefore, OriGene does not guarantee the capability to replicate this plasmid DNA. Additional amounts of DNA can be purchased from OriGene with batch-specific, full-sequence verification at a reduced cost. Please contact our customer care team at custsupport@origene.com or by calling 301.340.3188 option 3 for pricing and delivery.

The molecular sequence of this clone aligns with the gene accession number as a point of reference only. However, individual transcript sequences of the same gene can differ through naturally occurring variations (e.g. polymorphisms), each with its own valid existence. This clone is substantially in agreement with the reference, but a complete review of all prevailing variants is recommended prior to use. [More info](#)

OTI Annotation: This clone was engineered to express the complete ORF with an expression tag. Expression varies depending on the nature of the gene.

Components: The ORF clone is ion-exchange column purified and shipped in a 2D barcoded Matrix tube containing 10ug of transfection-ready, dried plasmid DNA (reconstitute with 100 ul of water).

Reconstitution Method:	<ol style="list-style-type: none">1. Centrifuge at 5,000xg for 5min.2. Carefully open the tube and add 100ul of sterile water to dissolve the DNA.3. Close the tube and incubate for 10 minutes at room temperature.4. Briefly vortex the tube and then do a quick spin (less than 5000xg) to concentrate the liquid at the bottom.5. Store the suspended plasmid at -20°C. The DNA is stable for at least one year from date of shipping when stored at -20°C.
Note:	Plasmids are not sterile. For experiments where strict sterility is required, filtration with 0.22um filter is required.
RefSeq:	NM_007954.4 , NP_031980.2
RefSeq Size:	1850 bp
RefSeq ORF:	1665 bp
Locus ID:	13884
UniProt ID:	P23953
Cytogenetics:	8 44.99 cM
Gene Summary:	Involved in the detoxification of xenobiotics and in the activation of ester and amide prodrugs. Involved in the extracellular metabolism of lung surfactant.[UniProtKB/Swiss-Prot Function]

Product images:

Circular map for MG216728