

Product datasheet for **MG216719**

Prh1 (NM_011174) Mouse Tagged ORF Clone

Product data:

Product Type:	Expression Plasmids
Tag:	TurboGFP
Symbol:	Prh1
Synonyms:	A-ty; MP; MP2; Prp
Mammalian Cell Selection:	Neomycin
Vector:	pCMV6-AC-GFP (PS100010)
E. coli Selection:	Ampicillin (100 ug/mL)

ORF Nucleotide Sequence: >MG216719 representing NM_011174, **codon optimized**.
Due to the complexity of NM_011174, the ORF clone is codon optimized for mammalian Expression. The nucleotide sequence differs from the reference sequence, yet the amino acid sequence remains identical.

Red=Cloning site Blue=ORF Green=Tags(s)

TTTTGTAATACGACTCACTATAGGGCGGCCGGAATTCGTCGACTGGATCCGGTACCGAGGAGATCTGCC
GCC**CGATCGC**

ATGCTGGTCGTCCTTTCACAGTTGCCCTTCTCGCCCTGAGCAGTGCCCAAGAACCACGGGAAGAAAACC
AAAATCAGATTCAGATTCTAACCAGCGCCCTCCACCCTCTGGTTTCAGCCCCGACCACCTGTGAACGG
ATCTCAACAAGGCCCCCTCCACCTGGCGGTCCACAGCCCAGACCTCCCCAAGGCCCCCTCTCCCGC
GGACCACAACCTAGACCACCCAGGGCCACCTCCACCAGGAGTCCCACAACCACGACCCCTCAGGGAC
CTCCACCTCCAGGCGGACCACAGCAGCGCCCTCCACAAGGTCCCCCTCTGGCGGACCCAGCACCG
CCCCCTCAAGGCCCCCAACCAGGTGGACCACAGCAGCGACCAACCAGGGTCCCCACCAAGGGC
GGCCCCAGCCAGGCCCCACAGGGTCTCCACCCAGGAGGCCCTCAGCAACGACCGCCCCAGGGAC
CACCTCCACCAGGGCGCCCAACTTCGCCCCCAAGGCCCCCAACCCTGCCGACCTCAACCACG
ACCACCTCAAGGACCTCTCTCCAGCCGGACCACAGCCCAGACCCCTCAAGGACCTCTACCACCGGC
CCTCAGCCAAGACCTACCCAGGGCCCAACCAACTGGCGGACCTCAGCAACGACCACTCAAGGACCC
CACCACCTGGCGGCCCGCAGCCACGCCCTCCACAAGGCCCAACCCCGGAGGACCCCAACCATCACC
CACCAAGGCCCCCAACAGGAGGACCTCAACAAACCCCTCTGGCTGGCAACTCAAGGCCCT
CCCCAGGGACGCCACAAGGACCA

ACGCGTACGCGGCCGCTCGAG - GFP Tag - GTTTAA



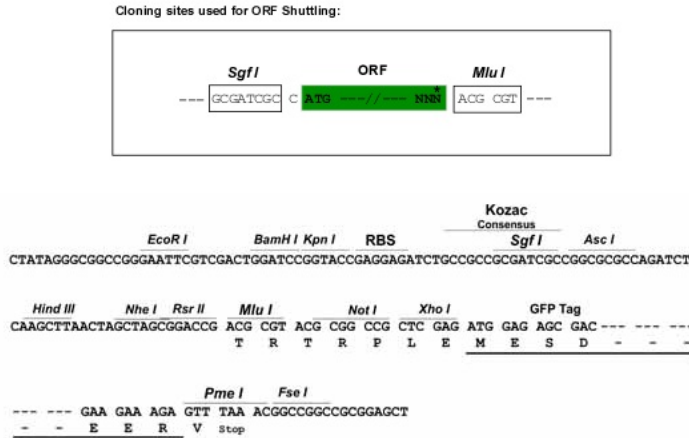
Protein Sequence: >MG216719 representing NM_011174
 Red=Cloning site Green=Tags(s)

MLVVLFTVALLALSSAQEPREENQNIQIPNQRPSPSGFQPRPPVNGSQGGPPPPGGPQPRPPQGGPPPPG
 GPQPRPPQGGPPPPGVPPRPPQGGPPPPGGPQQRPPQGGPPPPGGPQHRPPQGGPPPPGGPQRRPPQGGPPPPG
 GPQPRPPQGGPPPPGGPQQRPPQGGPPPPGGPQLRPPQGGPPPPAGPQPRPPQGGPPPPAGPQPRPPQGGPPTTG
 PQPRPTQGGPPPTGGPQQRPPQGGPPPPGGPQPRPPQGGPPPPGGPQPSTQGGPPPTGGPQQTPPLAGNTQGP
 PQGRPQGP

TRTRPLE - GFP Tag - V

Restriction Sites: SgfI-MluI

Cloning Scheme:



ACCN: NM_011174

ORF Size: 864 bp

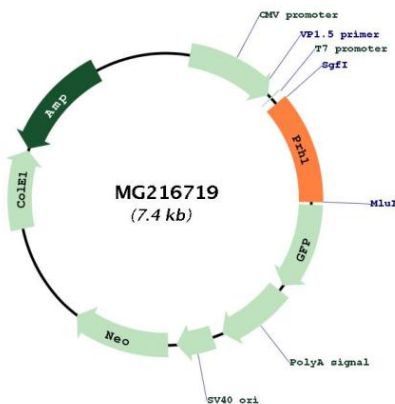
OTI Disclaimer: The molecular sequence of this clone aligns with the gene accession number as a point of reference only. However, individual transcript sequences of the same gene can differ through naturally occurring variations (e.g. polymorphisms), each with its own valid existence. This clone is substantially in agreement with the reference, but a complete review of all prevailing variants is recommended prior to use. [More info](#)

OTI Annotation: This clone was engineered to express the complete ORF with an expression tag. Expression varies depending on the nature of the gene.

Components: The ORF clone is ion-exchange column purified and shipped in a 2D barcoded Matrix tube containing 10ug of transfection-ready, dried plasmid DNA (reconstitute with 100 ul of water).

Reconstitution Method:	<ol style="list-style-type: none">1. Centrifuge at 5,000xg for 5min.2. Carefully open the tube and add 100ul of sterile water to dissolve the DNA.3. Close the tube and incubate for 10 minutes at room temperature.4. Briefly vortex the tube and then do a quick spin (less than 5000xg) to concentrate the liquid at the bottom.5. Store the suspended plasmid at -20°C. The DNA is stable for at least one year from date of shipping when stored at -20°C.
Note:	Plasmids are not sterile. For experiments where strict sterility is required, filtration with 0.22um filter is required.
RefSeq:	NM_011174.4 , NP_035304.4
RefSeq Size:	870 bp
RefSeq ORF:	870 bp
Locus ID:	19131
Cytogenetics:	6 G1
Gene Summary:	This gene encodes a member of the heterogeneous family of proline-rich salivary glycoproteins. The expression of this gene is dramatically induced in the parotid and submandibular glands of mice by beta-adrenergic stimulation. The encoded protein serves an important dental function by protecting mice against toxic dietary polyphenols such as tannins and influence the visco-elastic properties of the mucus. This gene is located in a cluster of closely related salivary proline-rich proteins on chromosome 6. [provided by RefSeq, Nov 2015]

Product images:



Circular map for MG216719