

## Product datasheet for **MG216712**

### Mtus2 (NM\_029920) Mouse Tagged ORF Clone

#### Product data:

<b>Product Type:</b>	Expression Plasmids
<b>Tag:</b>	TurboGFP
<b>Symbol:</b>	Mtus2
<b>Synonyms:</b>	5730592G18Rik; A730013O20Rik; AU067634; C130038G02Rik; Cazip; Gm763; mKIAA0774
<b>Mammalian Cell Selection:</b>	Neomycin
<b>Vector:</b>	pCMV6-AC-GFP (PS100010)
<b>E. coli Selection:</b>	Ampicillin (100 ug/mL)

**ORF Nucleotide Sequence:** >MG216712 representing NM\_029920  
Red=Cloning site Blue=ORF Green=Tags(s)

TTTTGTAATACGACTACTATAGGGCGCCGGGAATTCGTGACTGGATCCGGTACCGAGGAGATCTGCC  
GCCCGGATCGCC

ATGAGTGTCCCACTCGCTCCAAGAAATCCTGTTTGGTCAGCTGCGAGATCACCGAGAGGGGGCAAAA  
ATAATAATGAGAGTATTCTGAGGACGGGAGATACAAATGCCAATCAATCATGTTGGAGGTGAGCTCCTC  
TTGCGATGAGGCCAAGTCACGTGATCTGGATGATGAGCTCGGAAATTCGAATTAAGCAGGCCACAATAC  
CACAGCCACTTCCAAAAGGAGCCCTTACCTTCAGGGCTTCGGAAAGGGTCTCAGGCCGGCTTACCA  
GCCAGAGGGAGTCTCAGGCTTCTGACTGTCCACAGGCAGCTGAGTGAAGAACATGCAGTCAAAAAGAGG  
TGCCCTGCAGGCCCCCAAGTGTGTTTCAAGGACCAAGTCTTCCAGCTGGAGGAATGCAGTAGGTCAAGCC  
AGTCCAGAGGCTTCGCTAAAAGGATGCTGAGATTCCAGGCACATTCCTCAAGGACAAATTGGCGAAGA  
CCCTTGACAACGAAGAGCTGAAGAGAGCAAGCAGCTGCTCAGCTGCAGCTGGCAGCGTCCCTCCACGGA  
CCTGCAGCCAGTGCAGCTGGATACCTTGGGGCCGAGGACCATGTGCTCGCGTGGGGAGGGGCCACAA  
AGGACACCAGCCAGTCACTCTCCAGGAAAAGGTTTTTCTCCAGGTGAAGGTACCTCAGAGGGGAACAGT  
TGATCTTCTCTAAACCTACCTCAGAAGCAAGGGTCCAGCCATCAGACACCAAGATGGAAGGGCC  
ACATGGCCTGGATGTTACAACGAGCGCATCACTCATGAGAATTGACTCCCAGTTCAGCTTCAGCGTCCG  
AAGGAAAACCCCGCCTCCGTATCCGGAAGTGTGTTAGGTCAAGGGACAGGGAAGTCCAAAGTGGAGC  
TCAAATCTGTCCAACCCGGAATGAGGAGGGCCTAACATCAGCCCAGGCACAAGGTCCTGGCTGTACGA  
GGAAAGAAGTATGTCGCTGTAGAGAGGCAGGACTACTTGAGAAGGCATACCGAGAAGCCACAAGTCAA  
GGGAATAGCAGTACCAGCAGCTTGGAGTACGAAGAGGCAGCAGCCTAGAAGAAATGACTGGAGTCACTG  
CTGGTGTGGAGGGTCTCAGCAAGCCACCCTACACTGAGCGCCGCTCCCGCTGGAGAGGCAGGTACTAG  
ACTCACCGGTAATAATGTGAGCCGGTGTAGGTAGGATGGCAAGGGAAAACAGCATCCGGCCAAACTGCGCCT  
GATGTGCGACAAGCAGTCTCTGTCGCGTGTATCCAACCGAGAGCGTGCCCTCCGAGGTGAGTGGGGAGG  
AGCGGAGGCTGGGTAGCGGGAACCGGGCAGTACCAAATGTTGGCCTCAGGTCTTCTGCGGGAGGGAG  
CAGAACCAGACCTCTGGCTCTTGAACCTCGAGGTAGCAATTTGGAAGCCAGAAAAGGCAAGAGATG  
GTAGCTGAAAATAGGAACCTCTAGAAAATGCAGCCAAACTGACAACACTCCAGCTGGAGTAGATTCCG



CGTTCAGTACCCAGCGCCCTCCTCCACCCAGAGACAACTGTGAACTCGAGTCATCATCCGACTCCCC  
AGGTAGCAGTTCTCAGGAGCTCGGTGTGTTTCAGTGGGGACACAGGGTCACCCCTCAGTGGCCTCGCCCCC  
ACGGATGGTGGCAGGTATTGAACACATCCCCAAAAGTGCCGACAGGACCACCTGCTCCAGTGGGATCC  
CCAAGCCTCCTACACACCCCAAGGACACGCCCTCCTCCAGGAAGCTCGGGAGAACTGGAGACGGAGAA  
AATGGAAGAAAGGGCAGAGGCCAAGCCATCCTCATGCCAAAACCAAACAGTGAGGCCCAAGATCATC  
ACTTACATCCGCAGGAACCCAGGCTCTGAGTCAGGGAGATGCTTCACTGGTCCCGTGGGGCTCCAT  
ATGCCCTCCTACATGTGGCATGCCCTTCCCCAAGAAGAGAAGGCAGCGAGCCGTGACCTTCAACCGTC  
TGCAAACATGTACGAGAACTGAAGCCGACTTGACAGAGCCACGGGTCTTCCCTTCTGGACTGATGGTG  
TCTGGGATCAAGCCCCAGCGACCATTTTCAGTCAGATGAGCGAGAAGTTCTGCAGGAGGTGCGAGACC  
ACCCTGGGAAGGAAGAATTTGCTCTCCTCCCTACACCCACTATGAAGTCCCTCCCCTTTCTATCGTTC  
GGCCATGCTCCTTAAGCCTCAGTGGGATTGGGTGCAATGTCCCGTCTCCCATCAACCAAGAGCAGGAT  
CTGATCGCAAGCCAGAGTCTCAGCGAGTGCCATCCATCCGCCGGATCACTAACAAACAGCTGCCGATT  
TCTACGGTTCTGATCCTTCAGACCTCAAGAAAGCCTCCAATTCCAATGCTGCAAAGGCCAGTCTACAAA  
ATCCGGGCTTCGTCTCTGGCTATTACGACTCCCTGCAGCAAGCTGGCGGCCTTCGGCTTCGTGAGG  
AGCTCCAGCATCTCTCGGTGCCAGCAGCAATCCCTGGACAGCTGCAGCCGGAGCAGAGCAGGCCGG  
TCAACCGCTCAACCTTTGGCAATGAAGAGCAGGCTCCTCTGAAGCAGGCTCTGCCTTCTAAGGACACCC  
CAAGGGAGCCGGCCGGCGGCTCCTGCGTCTTCTCCAATGCAACAACACCACGCAGGAGTTTACTTCCA  
GCACAAAAACAATTCACGCGCAGCTGGAGCAAAGAAAGAATTGCAGAAAGATCCAGAAGCCAAAAAGC  
CCGCTGTTTCATCTCCCAAGAGGACAGCTTCTGCTGCCACCAACCTCACTCGCCAGGATACCCAAAGCA  
GAGGACCTCAGCTCCTCGAAATGAGTTCACCCCAAGCCTGACCTGCAGGCCCGGGAGCGGAGCGGCAG  
CTGGCCAGCGACTGCGGGACAGGTGTGAGTGGCAGGCCAGGCAGCTGGGTCTGGCTCGAAGGGAGCTGA  
AGAAAGCCATCCAAGGCTTCGACGCCCTGGCTGTCTCTACTAAGCATTTCTTTGAAAGAGCGAAAGAGC  
CCTTGCAGAAAGAAAGGAGCTGTCAATCGAACTTGCCAACATCAGGGATGAAGTTGCCTTCAACCCGCC  
AAGTGTGAGAAGCTGCAGAAGGAGAAGGAGACGCTGGAGCGCGGTTTGAGGAGGAGCTGAGGAGTTGG  
GCTGGCAGCAGCAGGCGGAGGTGCAGGAGTTGCAGGAGCGGCTGCAGCAGCAGTTCCAGGCCGAGAGCGC  
GCGTCTACAGGCGGAGCATCAGGACCAGCTGCTGCGCATGCGCTGCCAGCACCAGGAGCAGGTGGAAGAC  
ATCACTGCCAGCCACGAGGCTGCCCTGCTGGAGATGGAAAAAACCATACGGTCGCCATCACCATCCTTC  
AGGATGACCATGATCACAAAGTCCAAGAAGTGTGCTACTCATGAATTTGAGAAGAAGGAGTTGGAAGA  
AACTTTGAAAAGCTGCGGCTGACATTACAGGACCAGGTGGACACGCTAACTTTTCAGAGCCAATCTCTG  
CGTGACAGAGCCCGGCGCTTTGAGGAAGCTCTAAGGAAAACCCAGGAGGAGCAGCTAGAGATCGCGCTGG  
CTCCATACCAGCACCTGGAAGAAGACATGCAGAGCCTGAAGCAGGTGCTGGAGATGAAGAACCAGCAGAT  
CCACCTGCAGGAGAAGAAGATCATCGAGCTGGAAAAGCTGGTGGAGAAGAATATCATCCTGGAAAGAAAGG  
ATCCAGGTGCTGCAGCAGCAGAATGAAGACCTCAAAGCGAGGATCGACCAGAACACAGTTGTCCACGAGC  
AACTGTCCGAGGAAAATGCAAACCTCCAGGAATACGTGGAGAAAGAGACCCAGGAAAAGAAGAGACTGAG  
CCGAACCAACGAAGAATACTTTGGAAGCTCAAACGGGGGACCAACCCAGCCGATTAACCTCTCCCCT  
ACATCTCCAGTGTACAGAGGCTCCTCCTGAGACCCTCCTCTCCGCCAGAGTCAGTACCACACCTAGA

ACGCGTACGCGGCCGCTCGAG - GFP Tag - GTTTAA

**Protein Sequence:**

>MG216712 representing NM\_029920  
 Red=Cloning site Green=Tags(s)

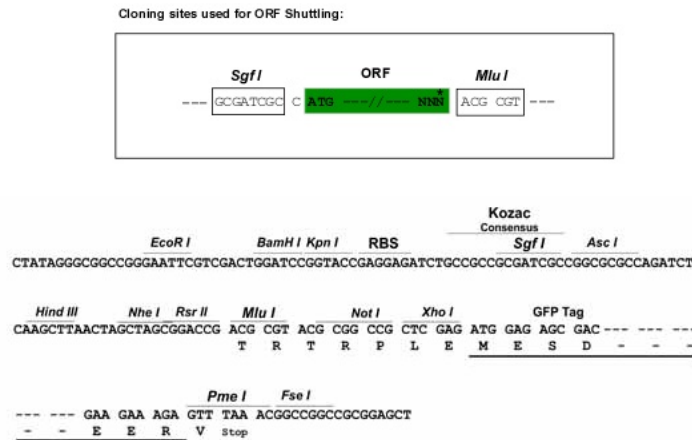
```
MSVPLAPKKSCFGQLRDHREGAKNNNESILRTGDTNANQIMLEVSSSCDEAKSRDLDELGNSNLSRPQY
HSHFQKEPLHLQGFQKGSQAGSTSQRSQASLTVHRQLSEEHAVKRGALQAPQCQVQGPSLSSWRNAVQQA
SPEASAKKDAEIPRHIPKDKLAKTLDNEELKRASSCSAAAGSVPPDLPVQLDTLGPQDHVPARGEGPQ
RTPASHSPGKGFSPGEGTSEGNSVYLPKPSTSEAKGSSPDTKMEGPHGLDVYNERITHAELTPSSASAS
KENPGLRHPEVCLGQGTGKSKVELKSVQPRNEEGLTSAQAQPGGCHEERSMSPVERQELLEKAYREATSQ
GNSSHRQLGVRGSSLEEMTGVSAVGEVGSQATPTLSAAPAGEAGTRLTGKMSAGVGRMARETASGQTAP
DVGQAAPVRRDPTEVSPSEVSGEERLGSNGSGSTKLLASGSPAGGSRDTSGLLSPRGSNLEARKGKEM
VAENRNLENAAQTDNTPAGVDSAFSTPAPLLHPETT VNSSHPTPPGSSSQELGVFSGDTGSPSVASPP
TDGGQVLNTSPKVPRDTCSSGIPKPPTHPKDTPSSQEAAREKLETEKMEERA EAKPILMPKPKHVRPKII
TYIRRNQALSQGDASLVPVGLPYAPPTCGMPLPQEEKAASRDLPANMYEKLKPDQKPRVFPVSGLMV
SGIKPPAHHSQMSEKFLQEVADHPGKEEFCSPPYTHYVPPTFYRSAMLLKPKQLGLGAMSRLPSTKSRI
LIASQRSSASAIHPPGSLTTAASFYSDPSDLKASNSNAKASLPKSGLRPPGYSRLPAAKLAAFVFR
SSSISAVPSSQSLDSVQPEQSRPVTRSTFGNEEQAPLKQALPSKDTPKGAGRAAPASSSNATTPRRSLLP
APKSTSTPAGAKKELQKDPEAKKPAVSSPKRTASAATKPHSPGYPKQRTSAPRNEFPKPDQAREAERQ
LAQRLRDRCEWQARQLGLARRELKKAIQGFDALAVSTKHFFGKSERALAKEKELSIELANIRDEVAFNTA
KCEKLQKEKETLERRFEEELRRLGWQQQAEVQELQERLQQQFQAESARLQAEHQDQLLRMRCQHQQEVED
ITASHAEALLEMNNHTVAITILQDDHDKVQELMSTHEFEKLEENFEKLRRLTLQDQVDTLTFQSQSL
RDRARRFEEALRKTTEEQLIAPYQHLEEDMQSLKQVLEMKNQIHLQEKKIIELEKLVKNIILEER
IQVLQQQNEDLKARIDQNTVVTRQLSEENANLQEYVEKETQEKRLSRTNEELLWKLQTDPTSPIKLS
TSPVYRGSSSGPSPARVSTTPR
```

TRTRPLE - GFP Tag - V

**Restriction Sites:**

SgfI-MluI

**Cloning Scheme:**



**ACCN:**

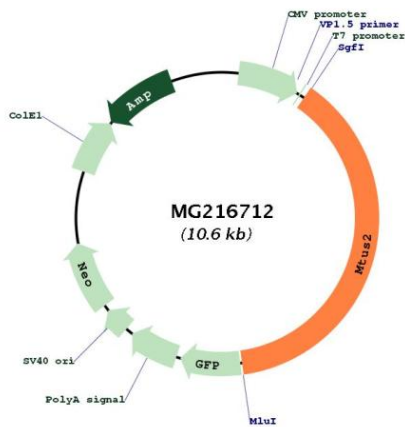
NM\_029920

**ORF Size:**

4059 bp

<b>OTI Disclaimer:</b>	The molecular sequence of this clone aligns with the gene accession number as a point of reference only. However, individual transcript sequences of the same gene can differ through naturally occurring variations (e.g. polymorphisms), each with its own valid existence. This clone is substantially in agreement with the reference, but a complete review of all prevailing variants is recommended prior to use. <a href="#">More info</a>
<b>OTI Annotation:</b>	This clone was engineered to express the complete ORF with an expression tag. Expression varies depending on the nature of the gene.
<b>Components:</b>	The ORF clone is ion-exchange column purified and shipped in a 2D barcoded Matrix tube containing 10ug of transfection-ready, dried plasmid DNA (reconstitute with 100 ul of water).
<b>Reconstitution Method:</b>	<ol style="list-style-type: none"><li>1. Centrifuge at 5,000xg for 5min.</li><li>2. Carefully open the tube and add 100ul of sterile water to dissolve the DNA.</li><li>3. Close the tube and incubate for 10 minutes at room temperature.</li><li>4. Briefly vortex the tube and then do a quick spin (less than 5000xg) to concentrate the liquid at the bottom.</li><li>5. Store the suspended plasmid at -20°C. The DNA is stable for at least one year from date of shipping when stored at -20°C.</li></ol>
<b>Note:</b>	Plasmids are not sterile. For experiments where strict sterility is required, filtration with 0.22um filter is required.
<b>RefSeq:</b>	<a href="#">NM_029920.7</a> , <a href="#">NP_084196.4</a>
<b>RefSeq Size:</b>	7543 bp
<b>RefSeq ORF:</b>	4062 bp
<b>Locus ID:</b>	77521
<b>UniProt ID:</b>	<a href="#">Q3UHD3</a>
<b>Cytogenetics:</b>	5 G3
<b>Gene Summary:</b>	Binds microtubules. Together with MAPRE1 may target the microtubule depolymerase KIF2C to the plus-end of microtubules. May regulate the dynamics of microtubules at their growing distal tip (By similarity).[UniProtKB/Swiss-Prot Function]

Product images:



Circular map for MG216712