

## Product datasheet for **MG216679**

### Arhgef10 (NM\_172751) Mouse Tagged ORF Clone

#### Product data:

Product Type:	Expression Plasmids
Tag:	TurboGFP
Symbol:	Arhgef10
Synonyms:	6430549H08Rik; mKIAA0294
Mammalian Cell Selection:	Neomycin
Vector:	pCMV6-AC-GFP (PS100010)
E. coli Selection:	Ampicillin (100 ug/mL)

**ORF Nucleotide Sequence:** >MG216679 representing NM\_172751  
Red=Cloning site Blue=ORF Green=Tags(s)

TTTTGTAATACGACTCACTATAGGGCGCCGGGAATTCGTGACTGGATCCGGTACCGAGGAGATCTGCC  
GCCGCGATCGCC

ATGGAGCAGGGAGAGGCCCTCACCTCCTGTTCTCCTGCAGAACATGAAGCGAAATGTGACACCAGCAACAACG  
AAGAGGAGGGAGAAGTCTTTGACTTCGACAGTGGAGATGAAGTTCCTGAAAGCGGATCGGCAAGTCCCGTCT  
TGCCGACGATAGGACGAGAGGTGCTGAAGCAGGAGGTGCAGACGAGAACACGTGCCCTGCAGGAAATGGA  
ACTGGAGCTGAACCTGCCCGAGGCGAGAGCCTGCGAAACTTGTGGTCCCCACAAAAGTGAACCCGTATT  
CTGTTCATCGACATCACGCCGTGCAGGAAGACCAGCCGTTCATCCAGACGCGAATACAGAGGAGGAAGG  
CGTGGGGCTGCGTGTGCCAGTGGTTACTCTGTGCTGTGCCCTGTGGCTATGCTGTCCCCTCCAACCTG  
CCATTGCTGCTGCCTACTCCAGTCTGTTCATCATCCGAGCCGAGTCTGTAGAGGAGGAAGAAGCAG  
CAGAACTGTGGGAGATGGGCAGTGAATTCCTAAGCTCCGAGGACCTTCCACACAGCAGTGAAGCAAGG  
CAGCCAAGAAGGCAGTGCCTGGCCGATGGGCAGCCGACCCTGCCAACACAGCATGGATGGAAAATCCA  
GAGGAAGCAATTTACGACGACGTTCCGAGGGAAAACCTCGGACTCTGAGCCAGATGAAATGATTTATGATG  
ATGTGGAGAACGGCAAGAAGTGGAAACAGCTCCCCAGAGTACGGGTGGAGTTCAGCGAATTCGAAAG  
AAGCAACTCTCATGACCTAACCCGCTTTAAGGCGCACTGTGAGGAAAAGATGAGAGGCTTGGTGGCCA  
GTACGGTGGGAGCCATGGAGATTCAGCAGGCAAAGCAGAGGAGGAGCGAAGATGCAGAAGCTTATGAA  
GGCAGCCAAGGAGGCAACAAAGATGGGCTGGAGAAAACAAAGCTGTGTGAAGAGAGGCGGCTCCTTC  
ATCAGGACCAGTCTTGGTCTCTCAAGATCACAGGTGTTATTTGAAGAAGAGCAGAATTTGTTTCATTG  
ACGTGGACTGCAAGCACCCGGAGGCTGTCTCACCCCAATGCCGAGGGCTTGTCTCAGCAGCAGGTTGT  
GAGAAGATACATTCTGGGCTCCATTGTTGAGAGCGAGAAGAACTATGTAGATGCTCTCCGGAGGATTTG  
GAGCAATATGAGAAGCCGCTGTCTGAGATGGAGCCCGGCTCCTGAGTGACAGGAAGCTCAGGATGGTTT  
TCTACCGCTCAAGGAGATCTGCAGTGTCACTCCATGTTCCAGATTGCGCTGGCCAGCCGCGTGTCCGA  
GTGGGATGTGCTGGAAACAATCGGCCAGTTTTGTGGCCTCGTTCTCCAAGTCCATGGTGTGGATGCT  
TACAGCGAGTACGTGAACAACCTCAGCACGGCCGTGGCTGTCTCAAGAAGACGTGTGCCACAAAGCCTG



CTTTCCTTGAGTTCTTAAAGCTGAGCCAGGATTCCAGTCCAGACCCAGTCCACTCCACAGCCTTATGAT  
GCGGCCCATCCAGAGGTTCCCACAGTTCATCCTCTACTGCAGGACATGCTGAAGAACCAGCCAAAGGA  
CATCCTGACAGGCTGCCCTTCAGATGGCGCTGACGGAGCTCGAGACCCGAGGAGAGCTAAACGAGA  
GAAAAAGAGATGCCGACCAGCGATGCGAAATCAAACAAATAGCAAAAGCCATAAACGAGAGATACCTGAA  
CAAGCTCCTCAGCAGTGGAAACCGGTACCTCGTCCGGTCCGATGACGTCATCGAGACGGTTTACAACGAC  
CGGGGAGAAATCGTCAAGACCAAAACGCGGGATCTTCATGCTGAATGACGTGCTCATGTGTGCCACCG  
CCAGCTCACGGAATCACATGAAAGCCATGCCGTGATGAGCCAGAGGTACCTGCTCAAGTGGAGTGTCC  
TCTAGGTACAGTGGATGTGATTCAATGAGGCTCTGGCGCCGGGAGCACTGTCCGACCAACGCT  
GCACACTCACCTGAGAGCCTGGCCGTGGTGGCCAAACGCGAAGCCACACAAGTTTACATGGGGCCAGGGC  
AGCTGTACCAGGATCTGCAAACTACTGCACGACCTGAACGTTGTTGGCCAGATCTCGCAGTGTATAGG  
AAACCTCCGAGGGAGCTATCAGAATTAACAGTCTGTAGCCATGATTGGACGTCCGGCTTACAGCGG  
CTGATACTGAGGAAAGAAGATGCGATCAGAGCTGCCGACCGCTGCCGGATCCAGTTACAGCTCCCGGAA  
AGCAGGACAAGTCCGGGCGGCCACGTTTCTACTGCTGTGTTCAATACGCTTACACCAGCCATCAAGGA  
GTCTGGGTGAGCAGCTGCAGATGGCCAAGTGGCCCTTGAGGAGGAGAACCATATGGGATGGTTCTGT  
GTGGATGACGATGGCAACCTAGCCAAGAAGGAGACACACCTCTCCTGGTGGGACACATGCCTGTGATGG  
TGGCCAAGCAGCCAGAGTTCAAGATTGAATGTGACGCTTATAACCTGAACCTTACCTGAGCAATGAAAG  
TCAACCAGCCTCACCTCCACAGCCGTGGCTTCTGTGGATTGGAAGCTGTAGCAACCAGATGGGTGAG  
GTCGCCATTGTCTCCTTCAAGGTTCAACCCCAAGTTCATCGAGTGTCAATGTGGAATCACGCATCC  
TGTGTATGGTATACATCCCGCAGAGGAGTCAAAGCCCAAGAAACCACCGAAACCAAGGATCCAGAAGC  
CACAGCCTCGAGAGCACCCCATGTGCCACCATCTGCCTGGGCACAGAAGAGGGAAGCATTCCATTTAC  
AAAAGCAGTCAAGGCTGCAAGAAGGTGAGGCTTCAAGCACTTCTATGCACCGGACAAGTCCACGGTATGA  
GCTTGGCCTGCTCCCAAGGCTGTATGCAGGCTGGTCAATGGGTCCGTAGCCAGCTACACCAAGGC  
TCCAGATGGATCCTGGAACCTCGAACCAGCAAGTATCAAGTTGGGTGCTCCAGTCAAGACCTT  
CTCCTGGTGGAGGGTGCATGTGGGACGCTCGGGAGGGCAGGTGTTTATGGCCAGCGTGGAGACTCACA  
CTATAGAGAATCAGCTGGAGGGCCACCAAGATGAAGGGATGGTATCTCCACATGGCTGTGGTGGCGT  
TGGCATCTGGATTGCCTCACCTCGGGGTCCACCTCCGCCTTCCACACAGAGACCTTGAAGCACCTG  
CAGGATGTCAACATTGATGCCCTGTGCATAGCATGCTGCCAGGGCACCAGCGTCTATCTGTGACCAGCC  
TGCTCGTCTGCCACGGCTTGTCTATGGTCCGTACCAGCTGGGTGTCGTGGTGGCCCTGCCAGTCCCTCG  
GCTTCAAGGTATCCCAAGTACAGGGGCGAGGATGGTCTCCTACCATGCGCATAACGGGCCCCGTTAAG  
TTCATCGTCTCAGCCACGGCTTCAAACAAGGACAGAGCCAGGGACAGCCCAGTTCCGGTTCTGAGC  
TTCAGGATGAAGACCCCAAGGACTTGTCTGCAGCGAGGAAGTCTTCTGCCGGGCCAGCCTGACAC  
CTACACATCCGTTTGGTTGGGAGACTCCCTAGGATTGCCAACTCAAAGAATGATCTGTCTTCGTCTCG  
GGGTACTGAACCTGTCCATGGCTCCAGTTCCCTAGAGCACAGATCTGTGGACAGCAGTCTGTGTGACC  
TGCTGAGGGACCCAGTGCCTCCCAAGGAGCAGACCACAGGGCTCTAGGCGAGCAAGAGCCAGTTGAGC  
GCTGGTGGTATGTGGGGCCAGGGCACCGCGGGTGCACAGGAAGGCCAGGCAGCCTTCTCAGGAGGAC  
CTGGTTCTCAGTGATGGTGTGGCAGATCCCCCTGCTGGGCATG

ACGCGTACGCGGCCGCTCGAG - GFP Tag - GTTTAA

**Protein Sequence:**

>MG216679 representing NM\_172751

Red=Cloning site Green=Tags(s)

```
MEQGEASPPVPAEHEAKCDTSNNEEEGELDFDMSGDEVPEADRQVPSADDRTRGAEAGGADENTCPAGNG
TGAEPAPEAPAKLVVPTKVPYVSVIDITPLQEDQPSSPDANTEEEGVGLRVPSGYSVVPVPCGYAVPSNL
PLLLPAYSSPVIIRAESVEEEAAETVGDGQCNSL SSEDLPHSSEQSQEGSALARWAADPANTAWMENP
EEAIYDDVPRENSDSEPDEMIYDDVNGEEGGNSPEYGWSSSEFESEYEEPSDSEGKNGIPRSLRSSHK
KQLSHDLTRFKAHCEEKMRGLVASTVGAMEIQQAKQRQERKMQLMKAKEGTDGLEKTKAAVKRGGSF
IRTRSLVSDQHRCYFEEEQNLFIDVDCKHPEAVLTPMPEGLSQQQVVRRYILGSIVESEKNYVDALRRIL
EQYEKPLSEMEPRLLSDRKLRMVYRVKEILQCHSMFQIALASRVSEWDVVETIGDVFVASFKSMVLDA
YSEYVNNFSTAVAVLKKTKATKPAFLFLKLSQDSSPDRVTLHSLMMRP IQRFPQFILLQDMLKNTAKG
HPDRLPLQMALTELETLAEKLNERKRADADQRCIEKQIAKAINERYLNKLLSSGNRYLVRSDDIETVYND
RGEIVTKQRRIFMLNDVLMCATASSRNSHESHAVMSQRYLLKWSVPLGHVDVIQYNGSGGAGEHCRHHA
AHSPELAVVANAKPHKVYMGPGQLYQDLQNLHDLNVVGGQISQLIGNLRGSYQNLNQSVAHDWTSGLQR
LILRKEDAIRAADRCRIQLQLPGKQDKSGRPTFFTAVFNTLTPAIKESWVSSLQMAKLALAEENHMWFC
VDDDGNLAKKETHPLLVGHPVMVAKQPEFKIECAAYNPEPYLSNESQPASPSTARGFLWIGSCSNQMGQ
VAIVSFQGSNPKVIECFNVESRILCMVYIPAEESKPQETTETKDPPEATASRAPHVPTICLGTTEEGSISIY
KSSQGCKKVRQLQHFYAPDKSTVMSLACSPQGLYAGLVNGSVASYTKAPDGSWNSEPQQVIKLVLPVRS
LLVEGALWAASGGQVFMASVETHTIENQLEAHQDEGMVISHMAVAGVGIWIAFTSGSTLRLFHTE TLKHL
QDVNIDAPVHSMPLPGHQRLSVTSLLVCHGLLMVGTSLGVVVALPVPRLQGI PKVTGRGMVSYHAHNGPVK
FIVSATAFQNKDRARDSPRSGSELQDEDPKDLLCSEEGSPCPGQPDYTSVWLGDSLGLPTQKNDLSSSS
GSLNLSHGSSSLEHRVSDSLCDLLRDPASPRSRPQGSRRARASSALVCGGQGHRRVHRKARQPSQED
LVSSVMVWQIPLLGM
```

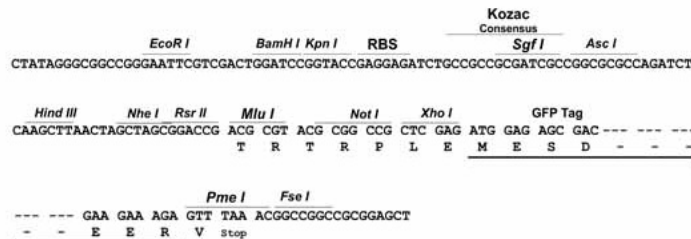
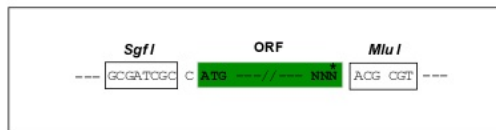
TRTRPLE - GFP Tag - V

**Restriction Sites:**

SgfI-MluI

**Cloning Scheme:**

Cloning sites used for ORF Shuttling:



**ACCN:**

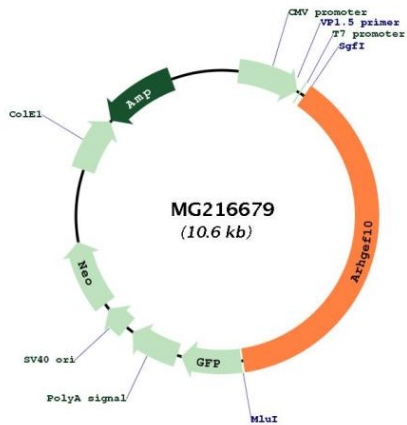
NM\_172751

**ORF Size:**

4035 bp

<b>OTI Disclaimer:</b>	<p>Due to the inherent nature of this plasmid, standard methods to replicate additional amounts of DNA in E. coli are highly likely to result in mutations and/or rearrangements. Therefore, OriGene does not guarantee the capability to replicate this plasmid DNA. Additional amounts of DNA can be purchased from OriGene with batch-specific, full-sequence verification at a reduced cost. Please contact our customer care team at <a href="mailto:custsupport@origene.com">custsupport@origene.com</a> or by calling 301.340.3188 option 3 for pricing and delivery.</p> <p>The molecular sequence of this clone aligns with the gene accession number as a point of reference only. However, individual transcript sequences of the same gene can differ through naturally occurring variations (e.g. polymorphisms), each with its own valid existence. This clone is substantially in agreement with the reference, but a complete review of all prevailing variants is recommended prior to use. <a href="#">More info</a></p>
<b>OTI Annotation:</b>	<p>This clone was engineered to express the complete ORF with an expression tag. Expression varies depending on the nature of the gene.</p>
<b>Components:</b>	<p>The ORF clone is ion-exchange column purified and shipped in a 2D barcoded Matrix tube containing 10ug of transfection-ready, dried plasmid DNA (reconstitute with 100 ul of water).</p>
<b>Reconstitution Method:</b>	<ol style="list-style-type: none"><li>1. Centrifuge at 5,000xg for 5min.</li><li>2. Carefully open the tube and add 100ul of sterile water to dissolve the DNA.</li><li>3. Close the tube and incubate for 10 minutes at room temperature.</li><li>4. Briefly vortex the tube and then do a quick spin (less than 5000xg) to concentrate the liquid at the bottom.</li><li>5. Store the suspended plasmid at -20°C. The DNA is stable for at least one year from date of shipping when stored at -20°C.</li></ol>
<b>Note:</b>	<p>Plasmids are not sterile. For experiments where strict sterility is required, filtration with 0.22um filter is required.</p>
<b>RefSeq:</b>	<p><a href="#">NM_172751.3</a>, <a href="#">NP_766339.2</a></p>
<b>RefSeq Size:</b>	<p>5484 bp</p>
<b>RefSeq ORF:</b>	<p>4038 bp</p>
<b>Locus ID:</b>	<p>234094</p>
<b>UniProt ID:</b>	<p><a href="#">Q8C033</a></p>
<b>Cytogenetics:</b>	<p>8 A1.1</p>
<b>Gene Summary:</b>	<p>May play a role in developmental myelination of peripheral nerves.[UniProtKB/Swiss-Prot Function]</p>

Product images:



Circular map for MG216679