

Product datasheet for **MG216671**

Smok3a (NM_001126045) Mouse Tagged ORF Clone

Product data:

Product Type:	Expression Plasmids
Product Name:	Smok3a (NM_001126045) Mouse Tagged ORF Clone
Tag:	TurboGFP
Symbol:	Smok3a
Synonyms:	Smok2b1
Mammalian Cell Selection:	Neomycin
Vector:	pCMV6-AC-GFP (PS100010)
E. coli Selection:	Ampicillin (100 ug/mL)



[View online »](#)

ORF Nucleotide Sequence:

>MG216671 representing NM_001126045
 Red=Cloning site Blue=ORF Green=Tags(s)

TTTTGTAATACGACTCACTATAGGGCGGCCGGGAATTCGTCGACTGGATCCGGTACCGAGGAGATCTGCC
 GCC**CGGATCGCC**

ATGGGCCCTGGGAGTCAACAGAAGTCAGAAAAGCTCAGATCCAAGTCCCCTTTGGCTGACATGGATGGTT
 TGCATGCTCAATATGTGATGCTAGAGACTATCGGCCATGGAGGCTGTGCCACAGTGAAGCTGGCCAGCA
 CCGCCTCACAGGCACTCACGTGGCTGTCAAACGATTCGAAAGAGGGAGTATTGGTGCAACCGTGTCTATT
 TCTGAGGTAGAGTTACTGATGATGGCCGATCATCCGAATATCATCTCTCTCTCTCAAGTCAATTGAGACCA
 AGAAGAAAGTATACCTCATTATGGAGTTGTGCAAGGTAATCACTTTACCAACACATCCGAAAAGCTGG
 CTACCTGCAGGAGCATGAAGCACGCGCATTATTCAAGCAGCTCTTAAGTGTATGAACTACTGCCACAAC
 CAGGGTATAGTTCACAGGGACCTGAAACCGGACAATATCATGGTTGAAAAAGATGGGAAAGTGAAGATCA
 TTGATTTTGGACTCGGCACCAAAGTGAAGCCAGGGCAAAAACCACTTATTCTGTGGGACTTACCATT
 TAGTGCTCCTGAGGTGCTCCTTAGCACACCTATGATGGGCCAAGATCGATGTATGGACTTTGGAGTT
 GTGCTGATTTTATGGTAACTGGAAAGTCCCCTTTGATGCTTGCAGCATAAAAAGCTGGTAAAGCGAA
 TTCTTGACAGAAAGTATTCTATTCCTCTAGACTGTCAGCAGAGCTCCAAGACCTGCTTAGTCTTTTAAT
 GACGGCCAAACCCAACTCAGGCCACTGTTGCTGAGGTTATGGTGCATCCCTGGGTACAGAAAGCTCA
 GGGGTGTTCCAGATCCTTGTGAAGAACAGAACCCCTCAAGCCAGACCTGCAATTGTAAGCAATGG
 GACATATCGGATCCAAGCTCAAGATATTGAAGATTGTTACGTACAGAGAAAATCAACCAAAACCATGGC
 GTCTTATTGTCTACTGAAAAACAGATTCTTAAGGAATGTGACAGGCCAACCCGGGCTAGGCCGTGAAC
 CCATCGGTGACCCATTCCCTCCCTTGTGATACTGCTACTACCCGTCTCGGACTTCGAGGAGAGAGA
 ATGAACCCACATGTCCCTGGTCAATCCGCAATAGGCAAGTGTCTGTCTGTGGCAAGAGTAAAGAA
 AAGAGACAGAAGAGTCAAGTTGGCCAGTGTCTCGGCAGGCCACGCCACACGGCACCCACAATGGACCAC
 ACACGCACCCGTAAGAGTGTACCCTGCATTTGCTCAATGTTTTGCACAGTCCAGCAAAACAGCAGCG
 AAGAGAGCACACAAGGCCACACCAGAGCCTCAGCAGCAGATAAGCCTGTCCACAGCAGGGGCTGGCCAG
 AGGCATCAAGGGCTGGACGAGGATGATAGGAAATGCGATGAGGAAGCTCTGTTGCTGATCCCATCCAAA
 GAGACATCTCACCTGGGCAGAACAGAGTCTCCCCAAAAAA

ACGCGTACGCGGCCGCTCGAG – GFP Tag – GTTTAA

Protein Sequence:

>MG216671 representing NM_001126045
 Red=Cloning site Green=Tags(s)

MGPSQKSEKLRSKSPADMDGLHAQYVMLETIGHGGCATVKLAQHRLTGTHVAVKTKIRKREYWCNRVI
 SEVELLMADHPNIIISLLQVIETKHKVYLIMELCKGKSLYQHIRKAGYLQEHEARALFKQLLSAMNYCHN
 QGIVHRDLKPDNIMVEKDGVKIIDFGLGTVKPGQKLNLFVCGTYPFSAPEVLLSTPYDGPKIDVWTLGV
 VLYFMVTGKIPFDACSIIKLVKRIILAGKYSIPRSLAELQDLLSLLMTANPKLRPTVAEVMVHPWVTEGS
 GVFPDPCQNPDKPDAIVKAMGHIGFQAQDIEDSLRQRKFNQTMASYCLLKKQILKECDRPTRARPVN
 PSVTPFSLVDTATTRLGLRRRENEPTCPWSSANRQVSVCGKSTSKKRDRRVSWPSVLGRPRHTAPTMDH
 TRTRTRSVPCICSMFCTVQPNSEESTQGHTRASAADKPVHRSRGPRIKGWTRMIGNAMRKLCCCIPSK
 ETSHLGQNRVSPKK

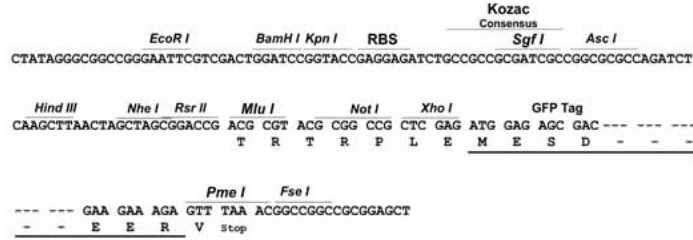
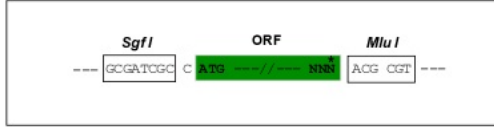
TRTRPLE – GFP Tag – V

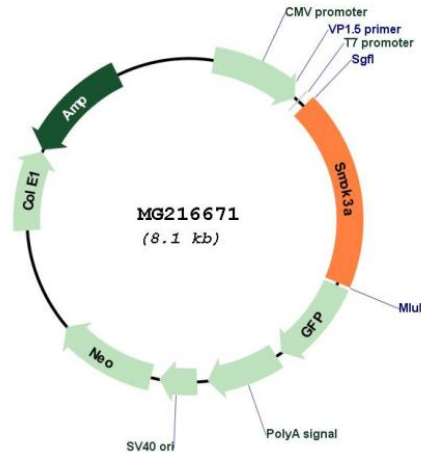
Restriction Sites:

Sgfl-MluI

Cloning Scheme:

Cloning sites used for ORF Shutting:



Plasmid Map:


ACCN: NM_001126045

ORF Size: 1512 bp

OTI Disclaimer: The molecular sequence of this clone aligns with the gene accession number as a point of reference only. However, individual transcript sequences of the same gene can differ through naturally occurring variations (e.g. polymorphisms), each with its own valid existence. This clone is substantially in agreement with the reference, but a complete review of all prevailing variants is recommended prior to use. [More info](#)

OTI Annotation: This clone was engineered to express the complete ORF with an expression tag. Expression varies depending on the nature of the gene.

Components: The ORF clone is ion-exchange column purified and shipped in a 2D barcoded Matrix tube containing 10ug of transfection-ready, dried plasmid DNA (reconstitute with 100 ul of water).

Reconstitution Method:

1. Centrifuge at 5,000xg for 5min.
2. Carefully open the tube and add 100ul of sterile water to dissolve the DNA.
3. Close the tube and incubate for 10 minutes at room temperature.
4. Briefly vortex the tube and then do a quick spin (less than 5000xg) to concentrate the liquid at the bottom.
5. Store the suspended plasmid at -20°C. The DNA is stable for at least one year from date of shipping when stored at -20°C.

RefSeq: [NM_001126045.1](#), [NP_001119517.1](#)

RefSeq Size: 2160 bp

RefSeq ORF: 1515 bp

Locus ID: 545814

UniProt ID: [C0HKC9](#)

Cytogenetics: 5 G2