

Product datasheet for **MG216660**

Il4i1 (NM_010215) Mouse Tagged ORF Clone

Product data:

Product Type:	Expression Plasmids
Product Name:	Il4i1 (NM_010215) Mouse Tagged ORF Clone
Tag:	TurboGFP
Symbol:	Il4i1
Synonyms:	Fig1; Fig1-ps; LAAO; LAO
Mammalian Cell Selection:	Neomycin
Vector:	pCMV6-AC-GFP (PS100010)
E. coli Selection:	Ampicillin (100 ug/mL)



[View online »](#)

ORF Nucleotide Sequence:

>MG216660 representing NM_010215
 Red=Cloning site Blue=ORF Green=Tags(s)

TTTTGTAATACGACTCACTATAGGGCGGCCGGAATTCGTCGACTGGATCCGGTACCGAGGAGATCTGCC
 GCC**GCGATCGCC**

ATGGCTGGGCTGGCCCTGCGTCTTGTCTGGCGGCCACCCTCCTTGGTCTGGCAGGCTCTCTGGACTGGA
 AGGCAGCCTCCAGCTTGAACCCTATTGAGAAGTGTATGGAGGACCACGATTATGAGCAGCTACTCAAGGT
 GGTGACCTTGGGCTCAATCGGACTTCGAAGCCCCAGAAGGTGGTAGTGGTTGGTGCAGGCGTGGCAGGG
 CTGGTAGCAGCCAAGATGCTCAGTGATGCAGGACACAAGGTCACCATCCTGGAGGAGATAACAGGATTG
 GGGGCCGTATCTTCACTTCCGGGATGAGAAGACAGGCTGGATAGGGGAGCTTGGGGCCATGCGAATGCC
 CAGCTCTCACAGGATCTGCACAAGCTCTGCAGGACCCTGGCCCTCAACCTGACTCAGTTCACACAGTAT
 GATGAGAACACGTGGACGGAGGTGCATAATGTGAAGCTGCGAAATATGTGGTGGAGAAGATGCCAGAAA
 AGCTGGGTACAACCTGAACAACAGGAAAGGGGCCATCCCCAGAGGACATCTACCAGATGGCACTCAA
 CAAGGCCCTCAAAGACCTCAAGGCCCTGGGCTGCAAGAAAGCCATGAATAAGTTCAACAAGCATAACGCTT
 CTGGAATACCTCCTCGAGGAGGGCAACCTGTCCCGGCCGGCTGTGCAGCTCCTGGGAGATGTGATGCCG
 AGGAGGGCTTCTTCTACCTCAGCTTTCGAGAAGCCTTACGTGCGCACGCCTGCCTGAGCGATAGACTCCG
 GTACAGCCGCATCGTAGGTGGCTGGGACCTGCTCCGCGAGCTCTGCTGAGCTACTGTCCGGGGCGCTG
 CTACTGAACGCGCCTGTGGTGTGATCACTCAGGGGAGGAACGATGTACGCGTGCACATTGCCACCTCGC
 TTCACAGCGAGAAGACGCTGACAGCCGACGTGGTGTGCTGACTGCCAGTGGACCCGCGCTGCAGCGCAT
 TACCTTCTCGCCGCCCTTGACTCGAAGAGGCAGGAGGCACTGCGCGCGCTTCACTACGTAGCAGCCAGC
 AAGGTTTTTCTGAGTTCCGTCGGCCCTTCTGGCACGAGGAGCACATCGAGGGCGGCCACTCCAACACTG
 ACCGCCATCGCGCCTCATATTTCTATCCCGCGGGGGCAGGGCTCACTGCTTCTGGCCTCTACACGCTG
 GTCGGACGCTGCAGCCCCCTTCGCTGGACTGAGCACCGACCAGACCCTGGGTTTGGTCTCCAGGACGTG
 GCGGCCCTGCACGGCCCTGTGGTTCGCGCTGTGGGACGGCAGGGGTGGTCAAGCGCTGGGCAGAGG
 ACCCGCATAGCCAGGGAGGCTTCGTGGTGCAGCCGCCATTGTACGGGCGCGAGGCTGAGGACTATGACTG
 GTCAGCCCCCTTCGGCCGCAATTTACTTCGCGGGCAGCACACAGCTCTCCCGCATGGCTGGGTAGAGACC
 GCTGTCAAGTCCGGGTTGCGGGCCGCGGTGAGAATCAATAATAACTATGGGTACGGGAGGTCGACCCCC
 AGATGATGGAGCATGCATATGCAGAGGCCAACTATCTGGACCAGTATCCTGAAGGGGAGAGGCCCGAGGA
 GCAGCAGGCGCGGAAGAAGTCAAGCCAGATGAACAGGAGCCCTCTCACAAACACTTGTGGTGGAAACG
 AGCCCCGAGGGGAGCAACACGCGTTTGTGGAGGCCATCCCCAGCTGCAGGGACACGTGTTCTGTGGAGA
 CTGTCCCCAGGAGAAGGGGACGCCACCAGAATATATATCCTTCGGAGCATGTACAGGTGCATGGGGA
 AGTCATCCCTGAGTGGCATGGTCATGGGGATCTGGCACCCCGCAATGCACCGAGTGGGGGACCACTCC

AG**GCGACCG**ACGCGTACGCGGCCGCTCGAG - GFP Tag - GTTTAA

Protein Sequence:

>MG216660 representing NM_010215
 Red=Cloning site Green=Tags(s)

MAGLALRLVLAATLLGLAGSLDWKAASSLNPIEKMEDHDYEQLLKVVTLGLNRTSKPQKVVVVAGVAG
 LVAKMLSDAGHKVTILEADNRIGGRIFTRDEKGTWIGELGAMRMPSSHRILHKL CRTLGLNL TQFTQY
 DENTWTEVHNVKLRNYVVEKMPKLGYNLNNRERGHSPEDIYQMALNKAFKDLKALGCKKAMNFKNHTL
 LEYLLEEGNLSRPAVQLLDVMSEEGFFYLSFAEALRAHA CLSDRLRYSRIVGGWDL LPRALL SSLSGAL
 LLNAPVVSITQGRNDVRVHIATSLHSEKTLTADVLLTASGPALQRITFSPL TRKRQEALRALHYVAAS
 KVFLSFRPFWHEEHIEGGHSNTDRPSRLIFYPARGEGSLLLASYTWSDAAPFAGLSTDQTLRLVLQDV
 AALHGPVVFRLWDGRGVVKRWAEDPHSQGGFVVPPLYGREAEDYDWSAPFGRIYFAGEHTALPHGWVET
 AVKSGLRAAVRINNNGYGEVDPQMMEHAYAEANYLDQYPEGERPEEQAREEVSPDEQEP SHKHL L VET
 SPEGQQHAFVEAIP ELQGHV FVETVPQEKGH AHQNIYSEHVQVHGEV IPEWHGHGSGTPQMHRVGDHS

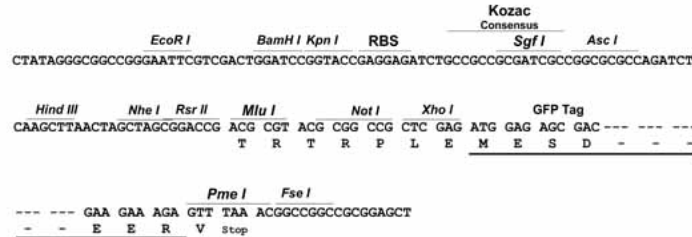
SGP**TRRRLE** - GFP Tag - V

Restriction Sites:

Sgfl-RsrII

Cloning Scheme:

Cloning sites used for ORF Shuttling:


ACCN: NM_010215

ORF Size: 1890 bp

OTI Disclaimer: The molecular sequence of this clone aligns with the gene accession number as a point of reference only. However, individual transcript sequences of the same gene can differ through naturally occurring variations (e.g. polymorphisms), each with its own valid existence. This clone is substantially in agreement with the reference, but a complete review of all prevailing variants is recommended prior to use. [More info](#)

OTI Annotation: This clone was engineered to express the complete ORF with an expression tag. Expression varies depending on the nature of the gene.

Components: The ORF clone is ion-exchange column purified and shipped in a 2D barcoded Matrix tube containing 10ug of transfection-ready, dried plasmid DNA (reconstitute with 100 ul of water).

- Reconstitution Method:**
1. Centrifuge at 5,000xg for 5min.
 2. Carefully open the tube and add 100ul of sterile water to dissolve the DNA.
 3. Close the tube and incubate for 10 minutes at room temperature.
 4. Briefly vortex the tube and then do a quick spin (less than 5000xg) to concentrate the liquid at the bottom.
 5. Store the suspended plasmid at -20°C. The DNA is stable for at least one year from date of shipping when stored at -20°C.

RefSeq: [NM_010215.2](#)
RefSeq Size: 2059 bp

RefSeq ORF: 1893 bp

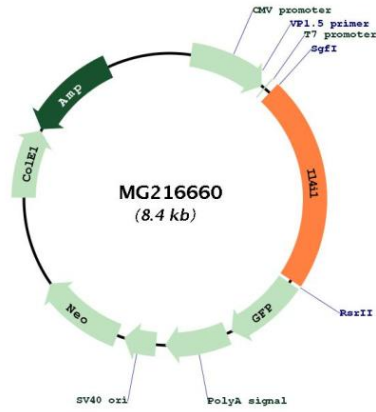
Locus ID: 14204

UniProt ID: [O09046](#)

Cytogenetics: 7 28.93 cM

Gene Summary: Lysosomal L-amino-acid oxidase with highest specific activity with phenylalanine. May play a role in lysosomal antigen processing and presentation.[UniProtKB/Swiss-Prot Function]

Product images:



Circular map for MG216660