

Product datasheet for **MG216659**

Ppie (NM_019489) Mouse Tagged ORF Clone

Product data:

Product Type:	Expression Plasmids
Product Name:	Ppie (NM_019489) Mouse Tagged ORF Clone
Tag:	TurboGFP
Symbol:	Ppie
Synonyms:	2010010D16Rik; Cyp33
Mammalian Cell Selection:	Neomycin
Vector:	pCMV6-AC-GFP (PS100010)
E. coli Selection:	Ampicillin (100 ug/mL)
ORF Nucleotide Sequence:	>MG216659 representing NM_019489 Red=Cloning site Blue=ORF Green=Tags(s)

TTTTGTAATACGACTCACTATAGGGCGGCCGGAATTCGTCGACTGGATCCGGTACCGAGGAGATCTGCC
GCC**CGATCGCC**

ATGGCCACCACCAAGCGTGTGCTGTACGTGGGCGGGCTGGCAGAAGAGGTGGACGACAAGGTTCTTCATG
CTGCATTTATCCCCTTTGGAGACATCACAGATTTCAAATTCCTCTGGACTATGAAACAGAAAAACCCG
AGGTTTGGCTTTTGTGAGTTTGTGAGTTGGCAGAGGATGCGGCAGCAGCTATCGACAACATGAATGAATCT
GAGCTCTTTGGACGGACGATTCTGTCAATTTGGCCAAGCCAATGAGAATTAAGAGGGCTCTTCCAGGC
CAGTCTGGTCAGATGATGACTGGTTGAAGAAGTTTCTGGAAGACTCTTGAGGAGAATAAGGAAGAAGA
AGGACCCGAGCCTCCCAAAGCTGAAGCCCAGGAGGGAGAGCCACTGCAAAAAAGCCCGGTCAAATCCT
CAGGTGTACATGGACATCAAGATTGGGAACAAGCCAGCAGGCCGCATTACAGATGCTCCTACGGTCTGATG
TGGTGCCCATGACCGCAGAAAATTCCGCTGCCTGTGCACCCATGAAAAGGGCTTTGGCTTCAAGGGAAG
CAGCTTCCACCGCATCATCCCCAGTTCATGTGTAGGGTGGTGATTTCAAAACCACAATGGCACAGGG
GGCAAGTCCATCTATGGGAAGAAGTTTGTGATGAAAACCTCATCCTTAAACACACAGGACCAGGCCCTCC
TCTCCATGGCCAATTCTGGCCGAACACCAACGGCTCCAGTTCCTCCTGACCTGTGATAAGACAGATTG
GCTGGACGGCAAGCATGTGGTATTTGGGAGGTCACGGAAGCCCTGGATGCTTTCGGGCAGATCGAGGCT
CAGGGCAGCAAGGATGGGAAGCCAAAGCAGAAGGTGATGATTGCCGACTGTGGAGAGTACATG

ACGCGTACGCGGCCGCTCGAG - GFP Tag - GTTTAA



[View online »](#)

Protein Sequence: >MG216659 representing NM_019489
Red=Cloning site Green=Tags(s)

MATTKRVLYVGGLAEEVDDKVLHAAFIPFGDITDIQIPLDYETEKHRGFVFEFELAEDAAAAIDNMNES
 ELFGRTIRVNLAKPMRIKEGSSRPVWSDDDWLKKFSGKLEENKEEEGPEPPKAEAEQEGEPTAKKARSNP
 QVYMDIKIGNKPAGRIQMLLRSDVVPMTAENFRCLCTHEKGFVKGSSFHRIIPQFMCQGGDFTNHNGTG
 GKSIYGKKFDDEFILKHTGPGLLSMANS GPNTNGSQFFLTCDKTDWLDGKHVVFEVTEGLDVLRLQIEA
 QGSKDGKPKQKQVMIADCGEYM

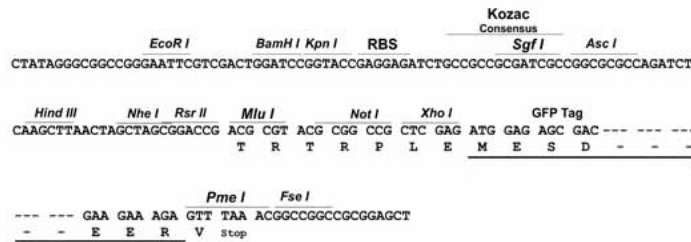
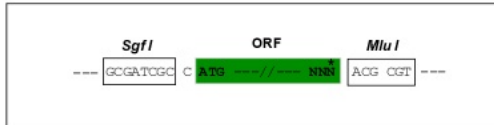
TRTRPLE - GFP Tag - V

Restriction Sites:

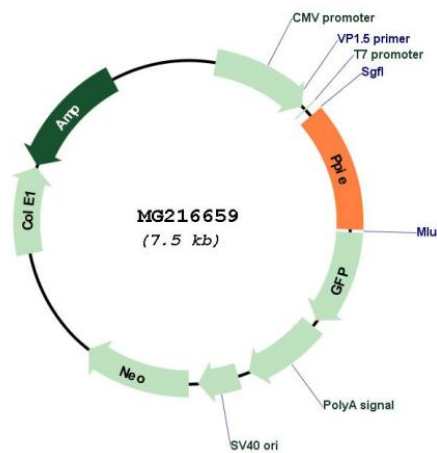
Sgfl-MluI

Cloning Scheme:

Cloning sites used for ORF Shuttling:



Plasmid Map:



ACCN: NM_019489

ORF Size: 903 bp

OTI Disclaimer:	The molecular sequence of this clone aligns with the gene accession number as a point of reference only. However, individual transcript sequences of the same gene can differ through naturally occurring variations (e.g. polymorphisms), each with its own valid existence. This clone is substantially in agreement with the reference, but a complete review of all prevailing variants is recommended prior to use. More info
OTI Annotation:	This clone was engineered to express the complete ORF with an expression tag. Expression varies depending on the nature of the gene.
Components:	The ORF clone is ion-exchange column purified and shipped in a 2D barcoded Matrix tube containing 10ug of transfection-ready, dried plasmid DNA (reconstitute with 100 ul of water).
Reconstitution Method:	<ol style="list-style-type: none">1. Centrifuge at 5,000xg for 5min.2. Carefully open the tube and add 100ul of sterile water to dissolve the DNA.3. Close the tube and incubate for 10 minutes at room temperature.4. Briefly vortex the tube and then do a quick spin (less than 5000xg) to concentrate the liquid at the bottom.5. Store the suspended plasmid at -20°C. The DNA is stable for at least one year from date of shipping when stored at -20°C.
RefSeq:	NM_019489.6
RefSeq Size:	1168 bp
RefSeq ORF:	906 bp
Locus ID:	56031
UniProt ID:	Q9QZH3
Cytogenetics:	4 D2.2
Gene Summary:	Involved in pre-mRNA splicing as component of the spliceosome. Combines RNA-binding and PPIase activities. Binds mRNA and has a preference for single-stranded RNA molecules with poly-A and poly-U stretches, suggesting it binds to the poly(A)-region in the 3' UTR of mRNA molecules. Catalyzes the cis-trans isomerization of proline imidic peptide bonds in proteins. Inhibits KMT2A activity; this requires proline isomerase activity.[UniProtKB/Swiss-Prot Function]