

Product datasheet for **MG216639**

Kat14 (NM_181417) Mouse Tagged ORF Clone

Product data:

Product Type:	Expression Plasmids
Tag:	TurboGFP
Symbol:	Kat14
Synonyms:	2510008M08Rik; ATAC2; AU023459; D2Ertd473e; D2Wsu131e; E430020F17; Kat14
Mammalian Cell Selection:	Neomycin
Vector:	pCMV6-AC-GFP (PS100010)
E. coli Selection:	Ampicillin (100 ug/mL)



ORF Nucleotide Sequence: >MG216639 representing NM_181417
 Red=Cloning site Blue=ORF Green=Tags(s)

TTTTGTAATACGACTCACTATAGGGCGCCGGGAATTCGTGCGACTGGATCCGGTACCGAGGAGATCTGCC
 GCCGCGATCGCC

ATGGATAGTAGCATCCACCTGAGTGGGCTCCTCAGTCGGCATGACGATGACGCCACGAGAACGTCCACCT
 CGGAAGGGCTGGAGGAAGGCGAGGTGGAGGGAGAGACTCTCCTAATTGTGGAATCGGAGGATCAGGCGTC
 AGTGGACTTATCTCAGCACCAGAGTGGGGATCCCTCAACAGCGATGAAGGAGATGTCTCCTGGATGGAG
 GAACAGCTGTCTTACTTCTGTGACAAGTGC AAAAGTGGATCCCAGCCAGTCAGCTGAGGGAGCAGCTCA
 GTTACTCTGAAGGGGATAACTTTTTCAGGTTTACTTGTTCGATTGCTCTGCAGACGGCAAGGAGCAGTA
 CGAGAGGCTGAAGCTGACATGGCAGCAAGTGGTCACTGCTGGCAATGTACAACCTGTCTCTGGAAAGGAAGT
 GGACGTCAAGTTTATTTCCGGTGGAAAGAAGATATCTGTGCTTTTATTGAGAAACATTGGACTTTTTTAC
 TAGGAAATAGGAAAAGACGTCGACGTGGTGGAGCACAGTAGCAGGCTGTCTCAGCGTGGGAAGCCCTGT
 TTTTTCCGGTCAGGTGCTCAGGAGTTGGAGAGCCCGGATGGTGGAACTTGTTCATAACAGACCCCA
 ACCATGAGGCCGGAGGAGAGAAGCTGGCTGCCTCCACCTTGAAAGTGAAAGCTCAAAGCCAACGCTGG
 ATCCCATCATTACTGTGAGGGACTCAGAAAACGGCAAGCCGGAATCCTGTGGAATCTGCCATGGAATT
 GAAAGAGAAGCGGTCCGGAACACAGGAAGCTAAAGACATCAGAAGAGCTCAGAAAAGAAGCGGCTGGCCTC
 CTCGACAGGAGCACCTTCCACTCCCGTCAAGTTTATAAGCCGAGGCCGGAGCCGGATCTGATTTTTGG
 AGAAAAGGAGAAGTGATTGACTTCTCGTCCCTAAGCTCCTCAGACCCGACTCCCTCACAAGCCCGTCTCC
 TTCTCCGTCTCTGGATTTCTCCGCCCGGGGACGCCAGCCTCGCACTCGGCCACACCTAGCTTGCTTTCC
 GAAGCAGACCTCATCCCAGACGTGATGCCACCCCAAGCCCTGTTTCATGATGACGATGAGCTGGAAGGAG
 ATGGAGTTATAGACCCAGGGATGGAGTACATCCACCCCCAGCTGGGTGACGCTCTGGGCTGCTTGGGAG
 CAGAAAAGAAGTCCGAGCTCCGGAACAGATAAAACAGGAAGTGGACAGCGAGGAGGAGAAGCCAGACAGG
 ATGGATGGAGATAGCGAAGACACAGATTCAAACATTTCTCTGCACACTAGAGCTCGAGAAAAGAGGAAGC
 CGCCACTGGAAAAGGACATGAAGCCCAAGGGCCCCAGGTATACACCCGTGAGCATCTATGAGGAGAAGCT
 GCTGCTCAAGAGGCTGGAGGCGTGCCCGGCCCGTGGCCATGACTCCAGAAGCCAGGAGGCTGAAACGG
 AAAGTGTGCTCCGGCAATTGAAAAGAGATCGGGGTTTACCCTGTTTACTTTGGAGCAGGTTGTGAATG
 CCGCACTTCTGTTAGTCGATGGGATTTATGGAGCCAAAGATGGAGGAGCTTCCCGGCTTGCAGCTGGACA
 AGCTACATACCGGACCCTGCCAGGACTTTCCGATCCTGGACCGGTACCAGACTGCCTTACCAGCCAGG
 AAAGGATCCGGCACAGACCAGAGATTTTTGTATCGTTTGGTGGATCAGAAGATCTGGCTGTGGACC
 AAAGTATTATCAGCCCTTATACTTCTCGGATCTTGAAACCTTATATCAGGCGTGATTATGAGACAAAGCC
 ACCCAAACACAGCTCCTGTACAGATCCGTTCCACCTGCACAGGAGTACCCTCACTGGACACCTGGA
 CCTGATGCACCCCTCGATTACTGTATGTCGACCAATACATCCCAACCATCAACTCCATGTGCCAGG
 AGTTTTCTGGCCTGGCATTGACCTGTCTGAGTGTCTGCAGTATCCAGACTTCAGTGTGTAGTCCCTTTA
 TAAAAAAGTCATTGTTGCCTTTGGCTTTCATGGTTCCCTGATGTGAAGTACAACGAAGCTTACATCTCATT
 CTGCTTGTTCATCCTGAGTGGAGGAGAGCAGGATCGCCACATTCATGATCTATCATCTGATTGAGACAT
 GCATGGCAAGGATGTGACTCTTCATGTCTCGGCAAGCAACCCCGCATGCTGCTGTACCAGAAGTTTGG
 CTTCAGACCGAGGAGTATGTTTTGATTTTATGATAAGTATTACCCGCTGGAGAGTACGGAGTGAAG
 CATGCATTCTTCTGAGGCTCCGACGC

ACGCGTACGCGGCCGCTCGAG - GFP Tag - GTTTAA

Protein Sequence: >MG216639 representing NM_181417
Red=Cloning site Green=Tags(s)

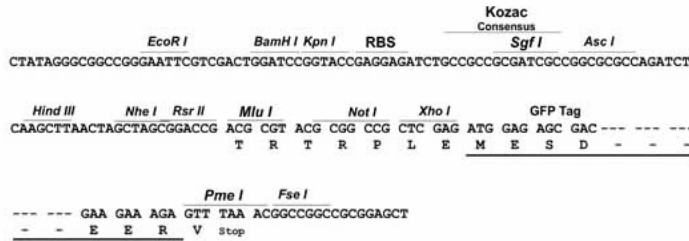
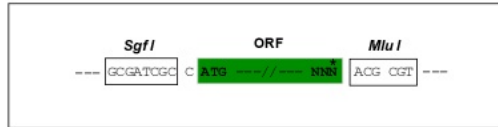
MDSSIHLGSLLSRHDDDATRTSTSEGLLEEVEGETLLIVESEDQASVDLSHDQSGDSLNSDEGDVSWME
EQLSYFCDKCQKWPASQLREQLSYLKGNFRFTCCDCSADGKEQYERLKLWQVVMMLAMYNLSLEGS
GRQVYFRWKEDICAFIEKHWTFLGNRKKSTWWSTVAGCLSVGSPVYFRSGAQEFGEPEGWVKLVHRNP
TMRPEGEKLAASLTKVKASKPTLDPITVEGLRKRASRNVPESAMELKEKRSRTOEAKDIRRAQKEAAGL
LDRSTSSTPVKFISRGRPPDLILEKGEVIDFSSLSSSDRTPLTSPSPSPSLDFAPGTPASHSATPSLLS
EADLIPDVMPPQALFHDDDELEGDGVIDPGMEYIPPPAGSAGLLGSRKKVRAPEQIKQEVDSSEEKPD
MDGDSEDTDSNISLHTRAREKRKPPLEKDMKPKGPRYPVSIYEEKLLLKRLEACP GAVAMTPEARRLKR
KLIVRQLKRDRLPLFDLDEVNAAALLVDGIYGA KDGGASRLAAGQATYRTTCQDFRILDYRQTALPAR
KGFRRHTTRFLYRLVGSEDLAVDQSIISPYTSRILKPYIRRDYETKPKLQLLSQIRSHLHRSDPHWTPG
PDAPLDYCYVRPNHIPTINSMCQEFFWPGIDLSECLQYPDFSVVVLYKKVIVAFGFMVDPVKYNEAYISF
LLVHPEWRRAGIATFMIYHLIQTCMGKDVTLHVSANPAMLLYQKFGFKTEEYVLDYDKYYPLESTECK
HAFFLRRLRR

TRTRPLE - GFP Tag - V

Restriction Sites: SgfI-MluI

Cloning Scheme:

Cloning sites used for ORF Shutting:



ACCN: NM_181417

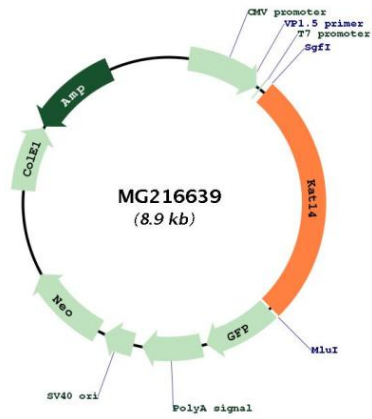
ORF Size: 2337 bp

OTI Disclaimer: The molecular sequence of this clone aligns with the gene accession number as a point of reference only. However, individual transcript sequences of the same gene can differ through naturally occurring variations (e.g. polymorphisms), each with its own valid existence. This clone is substantially in agreement with the reference, but a complete review of all prevailing variants is recommended prior to use. [More info](#)

OTI Annotation: This clone was engineered to express the complete ORF with an expression tag. Expression varies depending on the nature of the gene.

Components:	The ORF clone is ion-exchange column purified and shipped in a 2D barcoded Matrix tube containing 10ug of transfection-ready, dried plasmid DNA (reconstitute with 100 ul of water).
Reconstitution Method:	<ol style="list-style-type: none">1. Centrifuge at 5,000xg for 5min.2. Carefully open the tube and add 100ul of sterile water to dissolve the DNA.3. Close the tube and incubate for 10 minutes at room temperature.4. Briefly vortex the tube and then do a quick spin (less than 5000xg) to concentrate the liquid at the bottom.5. Store the suspended plasmid at -20°C. The DNA is stable for at least one year from date of shipping when stored at -20°C.
Note:	Plasmids are not sterile. For experiments where strict sterility is required, filtration with 0.22um filter is required.
RefSeq:	NM_181417.2
RefSeq Size:	3748 bp
RefSeq ORF:	2340 bp
Locus ID:	228714
UniProt ID:	Q8CID0
Cytogenetics:	2 71.01 cM
Gene Summary:	Component of the ATAC complex, a complex with histone acetyltransferase activity on histones H3 and H4. May function as a scaffold for the ATAC complex to promote ATAC complex stability. Has also weak histone acetyltransferase activity toward histone H4. Required for the normal progression through G1 and G2/M phases of the cell cycle (By similarity).[UniProtKB/Swiss-Prot Function]

Product images:



Circular map for MG216639