

Product datasheet for **MG216611**

Arhgap25 (NM_001037727) Mouse Tagged ORF Clone

Product data:

Product Type:	Expression Plasmids
Product Name:	Arhgap25 (NM_001037727) Mouse Tagged ORF Clone
Tag:	TurboGFP
Symbol:	Arhgap25
Synonyms:	A130039I20Rik
Mammalian Cell Selection:	Neomycin
Vector:	pCMV6-AC-GFP (PS100010)
E. coli Selection:	Ampicillin (100 ug/mL)



[View online »](#)

ORF Nucleotide Sequence:

>MG216611 representing NM_001037727
 Red=Cloning site Blue=ORF Green=Tags(s)

TTTTGTAATACGACTCACTATAGGGCGGCCGGAATTCGTCGACTGGATCCGGTACCGAGGAGATCTGCC
 GCC**CGCATCGCC**

ATGTCTCTCAAGCTGCCAAGGAAGTGGGATTTCAATTTGAAAGCGGAGGCTTCAAAAATAGCTCGGTGCGA
 GGAGTGTGATGACCGGGAGCAGATGGCGGCCTTTCACCCACCCACCACTCCCAACCCCTGGAAAAGGCC
 AATTAAGGTGGGCTGGCTGAAGAAGCAGAGGTCCATCGTAAAAACTGGCAGCAGCGGTACTTTGTGTTG
 AGAGCTCAGCAACTCTACTACTACAAGGACGAAGAGGACTCAAAGCCACAGGGTGCATGTATCTGCCAG
 GCAGTACAGTCAAAGAAATTGCCACAAACCCGAAGAAGCTGGGAAATTTGTCTTTGAAGTTATTCCAGC
 CTCAAGTGACCAGAACCATTGGACAAGACTCCTACGTCCTCATGGCCAGCTCCAGGTAGAGATGGAG
 GAGTGGGTTAAGTTCCTCAGGAGAGTTGCTGGCACGCCCTCTGGAGCGGTGTTTGGCCAGCGTCTGGATG
 AGACTGTGGCCTATGAGCAGAAGTTTGGCCCTCACCTGGTGCCCATCTTGGTGGAGAAGTGCCTGAGTT
 CATCCTGGAACATGGTGTGAGTGAAGAGGGCATCTTCCGCTGCCGGGAGGACAACTTGTGAAGCAG
 CTGAGAGATGCTTTCGATGCGGGGAGCGGCCCTCTTTGACAGGGACACAGATGTGCACACGGTGGCAT
 CTCTACTAAAGCTCTACCTCCGAGACCTGCCAGAGCCTGTGGTTCCTTGGAGTCAGTATGAAGGGTCTCT
 GCTCTGTGGGAGCTCATGAACGCAGATGAGGCAAAGGCTCAGCAGGAGTTGGTGAAGCAGCTTTCTACC
 CTTCCCGAGACAACATAACCTCTGAGCTACATCTGCAGATTTCTGCATGAAATCCAGCTGAAGTGTG
 CCGTCAACAAGATGAGCGTGGACAACCTGGCCACTGTGATCGGGGTGAACCTCATCAGGTGGAAGTTGA
 AGACCCAGCTGTGATTATGAGAGGGACTCCTCAGATCAAAGAGTGTGACCATGATGATCAGAGACCAC
 GAAGTCTCTTCCCAAGTCTAAGGATGCACCGATCTCACCCCTGCCAGAAAAACGATGCCAAGAAGG
 CTCAGTGCAGCAAGTCTGTGGGTGGGATGCCACGGAAGACCCACCCCTTTCTAGGACAGCAGCTT
 CAGTAACACAGCAAGTAGTCTGATGCCACAGTCCCACTGGACCACTGCCAGTACCAGCATCAGGAA
 GACAGCGGAAAAGCCCAAGGAAAACCCAGGAGACTGGAAGATGCAATCCCGTAAAAGGACTCAAACGC
 TTCCCAACCGGAAGTGTTCCTGACGTCGCCATTCCAAGGCACCACCAGCAGTAAACTGGAAATCTTTAA
 AAATGAGTTCTGGTCTCCATCTCAGAGGCTAAGGCAGGAGAAGGGCACAGGCGAACTATGTCCCAAGAC
 TTGCGCCACCTTCCAATGACCAGCGGACTTCTACCTACGATAATGTCCCACTCACCAGTCCCAAG
 GGAACCCAGCAGGTGCACTCTCTCCCTGCCAGTGACTCCAAGAGAGATGCTCTTGTAGCACAGACTC
 TGAATGGAGGCTGGAAGCAAGAACTCTGGCGAGGATGACCTTGATTCTCTGCAGAGGACAGTCCAGAGC
 CTACAGAAGGAAATAGAAACCCAGAAGCAGGTCTATGAGGAACAGATTAACCTGGAGAGGAAATTT
 ACGATGTCTGGGTAAGGTGGTGAAGGCTCAATGAAGAAGTGCAGAGGGAGAGGAAGAAATTCGCGGCCCT
 GGAATACGCTTCGAAATGTGGAGCGCTCCCGGAGGACGTTGAGAAGGGAACAGAGTCTTGGAGAA
 GAAGTCAAGGAGTTTGTGAAGTCGATGGAGAAGCCCAAGACAAAGACGGATCT

ACGCGTACGCGGCCGCTCGAG - GFP Tag - GTTTAA

Protein Sequence:

>MG216611 representing NM_001037727
 Red=Cloning site Green=Tags(s)

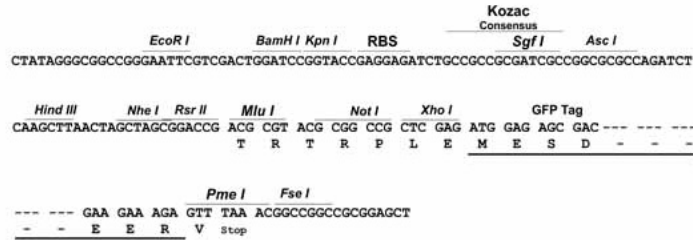
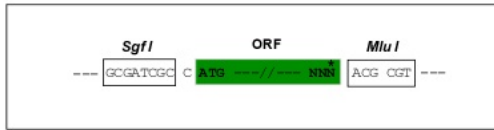
MSLKLPRNWFNLKAEASKIARSRVMTGEQMAAFHPPTTPNPLERPIKVGWLKKQRSIVKNWQQRVFL
 RAQQLYYYKDEEDSKPQGCMYLPGSTVKEIATNPEEAGKFVFEVIPASSDQNRIGQDSYVLMASQVEME
 EWWKFLRRVAGTPSGAVFGQRLDETVAVEQKFGPHLVPILVEKCAEFILEHGVSEEGIFRLPGQDNLVKQ
 LRDAFDAGERPSFDRDTHVHTVASLLKLYLRDLPEPVVWPSQYEGFLLCGQLMNADEAKAQQLVKQLST
 LPRDNYNLLSYICRFLHEIQLNCAVNMKMSVDNLATVIGVNLIRSKVEDPAVIMRGTPQIQRVMTMMIRDH
 EVLFPKSKDAPISPPAQKNDAKKAPVPRSSVGDATEDPPLSRTDSFSNTASSPDATSPGTPLPSDQHQE
 DSGKAPRENPGDWKMQSRKRTQTLPNRKCFLSAFQGTSSKLEIFKNEFWSPSSEAKAGEGHRRTMSQD
 LRHLSNDQRTSTYDNVPTSPQSQGNPAGALSPPASDSKRDALVSTDSEMEAGSKNSGEDDLDSLQRTVQS
 LQKEIETQKQVYEEQIKNLEKENYDVWAKVVRLLNEELERERKKFAALEISLRNVERSREDVEKRNVRLEE
 EVKEFVKSMKPKTKTDP

TRTRPLE - GFP Tag - V

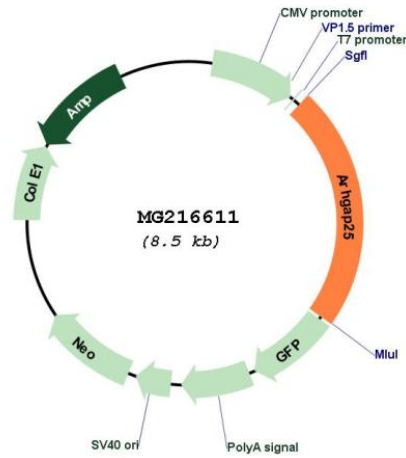
Restriction Sites: SgfI-MluI

Cloning Scheme:

Cloning sites used for ORF Shutting:



Plasmid Map:



ACCN: NM_001037727

ORF Size: 1944 bp

OTI Disclaimer:	The molecular sequence of this clone aligns with the gene accession number as a point of reference only. However, individual transcript sequences of the same gene can differ through naturally occurring variations (e.g. polymorphisms), each with its own valid existence. This clone is substantially in agreement with the reference, but a complete review of all prevailing variants is recommended prior to use. More info
OTI Annotation:	This clone was engineered to express the complete ORF with an expression tag. Expression varies depending on the nature of the gene.
Components:	The ORF clone is ion-exchange column purified and shipped in a 2D barcoded Matrix tube containing 10ug of transfection-ready, dried plasmid DNA (reconstitute with 100 ul of water).
Reconstitution Method:	<ol style="list-style-type: none">1. Centrifuge at 5,000xg for 5min.2. Carefully open the tube and add 100ul of sterile water to dissolve the DNA.3. Close the tube and incubate for 10 minutes at room temperature.4. Briefly vortex the tube and then do a quick spin (less than 5000xg) to concentrate the liquid at the bottom.5. Store the suspended plasmid at -20°C. The DNA is stable for at least one year from date of shipping when stored at -20°C.
RefSeq:	NM_001037727.2 , NP_001032816.1
RefSeq Size:	2831 bp
RefSeq ORF:	1947 bp
Locus ID:	232201
UniProt ID:	Q8BYW1
Cytogenetics:	6 D1
Gene Summary:	GTPase activator for the Rho-type GTPases by converting them to an inactive GDP-bound state.[UniProtKB/Swiss-Prot Function]