

## Product datasheet for **MG216610**

### F2rI2 (NM\_010170) Mouse Tagged ORF Clone

#### Product data:

Product Type:	Expression Plasmids
Tag:	TurboGFP
Symbol:	F2rI2
Synonyms:	F730031A08; PAR3
Mammalian Cell Selection:	Neomycin
Vector:	pCMV6-AC-GFP (PS100010)
E. coli Selection:	Ampicillin (100 ug/mL)

**ORF Nucleotide Sequence:** >MG216610 representing NM\_010170  
Red=Cloning site Blue=ORF Green=Tags(s)

TTTTGTAATACGACTCACTATAGGGCGCCGGGAATTCGTCGACTGGATCCGGTACCGAGGAGATCTGCC  
GCC**CGGATCGCC**

ATGAAAATCCTTATCTTGGTTGCAGCTGGGCTGCTGTTTCTGCCAGTCACTGTTTGCCAAAGTGGCATAA  
ATGTTTCAGACAACTCAGCAAAGCCAACTTAACATTAAGAGTTTTAATGGGGTCCCCAAAATACCTT  
TGAAGAATCCCACTTTCTGACATAGAGGGCTGGACAGGAGCCACCACAATAAAAAGCGGAGTGTCCC  
GAGGACAGTATTTCAACTCTCCACGTGAATAATGCTACCATAGGATACCTGAGAAGTTCCTTAAGTACCC  
AAGTGATACCTGCCATCTACATCCTGCTGTTTGTGGTTGGTGTACCAGCCAACATCGTGACCCTGTGGAA  
ACTCTCCTTAAGGACCAAATCCATCAGTCTGGTCATCTTTCACACCAACCTGGCCATCGCAGATCTCCTT  
TTCTGTGTCACTGCCATTTAAGATCGCCTACCATCTCAATGGCAACAACCTGGGTATTTGGCGAGGTCA  
CGTGCCGGATCACCACGGTGTCTTCTACGGCAACATGTACTGCGCTATCCTGATCCTCACCTGCATGGG  
CATCAACCGCTACCTGGCCACGGCTCACCTTTTACATACCAGAAGCTGCCAAACGAGCTTCTCCATG  
CTCATGTGTGGCATGGTGTGGGTATGTTTTCTTATACATGCTGCCCTTTGTCTATCCTGAAGCAGGAGT  
ACCACCTCGTCCACTCCGAGATCACCACCTGCCACGATGTCGTTGACGCGTGGCAGTCCCCATATCCTT  
CCGATTCTACTACTTCGTCTCCTTAGCATCTTTGGGTTCCATCCGTTTGTGATCATCATCTTCTGT  
TACACGACTCTCATCCAAAACCTAAATCAAAGGATCGGATATGGCTGGGCTACATCAAGGCCGTCCCTC  
TCATCCTTGTGATTTTACAATTTGCTTTGCCCCACCAACATCATACTCGTAATCCACCATGCCAACTA  
CTACTACCACAATACCGACAGCTTGTACTTTATGTATCTTATTGCTCTGTGCCTGGGGAGCCTGAATAGC  
TGCTAGATCCATTCCTTACTTTGTCATGTCGAAAGTTGTAGATCAGCTTAATCCT

AG**CGGACCG**ACGCGTACGCGCCGCTCGAG - GFP Tag - GTTTAA



**Protein Sequence:** >MG216610 representing NM\_010170  
 Red=Cloning site Green=Tags(s)

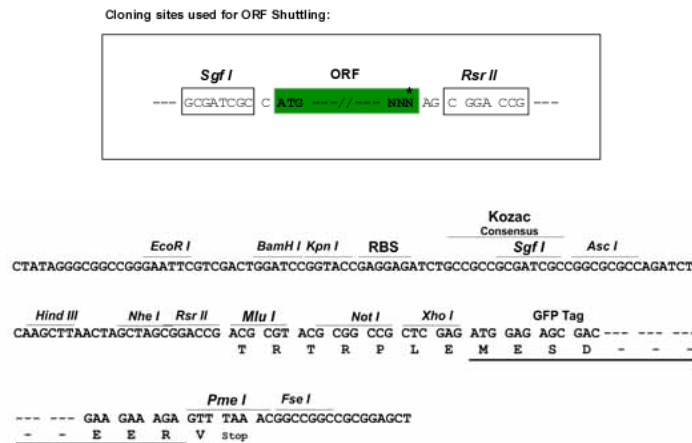
MKILILVAAGLLFLPVTVCQSGINVS DNSAKPTLTIKSFNGGPQNTFEEFPLSDIEGWTGATTTIKAACP  
 EDSISTLHVNNATIGYLRSSLSTQVIPAIYILLFVVGVPANIVTLWKLRLTKSISLVIFHTNLAIADLL  
 FCVTLPFKIAIYHLNGNNWVFEVTCRITTVVFGNMYCAILILTCMGINRYLATAHPFTYQKLPKRSFSM  
 LCMGMVWMVFLYMLPFVILKQYHLVHSEITTCHDVVDACESSFRFYFVSLAFFGFLIPFVIIIFC  
 YTTLIHKLKS KDRIWLGYIKAVLLILVIFTICFAPTNIILVIHANYYYHNTDSL YFMYLIALCLGSLNS  
 CLDPFLYFVMSKVVDQLNP

SGPTRRRLE - GFP Tag - V

**Chromatograms:** [https://cdn.origene.com/chromatograms/ja1206\\_c07.zip](https://cdn.origene.com/chromatograms/ja1206_c07.zip)

**Restriction Sites:** SgfI-RsrII

**Cloning Scheme:**



**ACCN:** NM\_010170

**ORF Size:** 1107 bp

**OTI Disclaimer:** The molecular sequence of this clone aligns with the gene accession number as a point of reference only. However, individual transcript sequences of the same gene can differ through naturally occurring variations (e.g. polymorphisms), each with its own valid existence. This clone is substantially in agreement with the reference, but a complete review of all prevailing variants is recommended prior to use. [More info](#)

**OTI Annotation:** This clone was engineered to express the complete ORF with an expression tag. Expression varies depending on the nature of the gene.

**Components:** The ORF clone is ion-exchange column purified and shipped in a 2D barcoded Matrix tube containing 10ug of transfection-ready, dried plasmid DNA (reconstitute with 100 ul of water).

**Reconstitution Method:**

1. Centrifuge at 5,000xg for 5min.
2. Carefully open the tube and add 100ul of sterile water to dissolve the DNA.
3. Close the tube and incubate for 10 minutes at room temperature.
4. Briefly vortex the tube and then do a quick spin (less than 5000xg) to concentrate the liquid at the bottom.
5. Store the suspended plasmid at -20°C. The DNA is stable for at least one year from date of shipping when stored at -20°C.

**Note:** Plasmids are not sterile. For experiments where strict sterility is required, filtration with 0.22um filter is required.

**RefSeq:** [NM\\_010170.4](#), [NP\\_034300.3](#)

**RefSeq Size:** 2464 bp

**RefSeq ORF:** 1110 bp

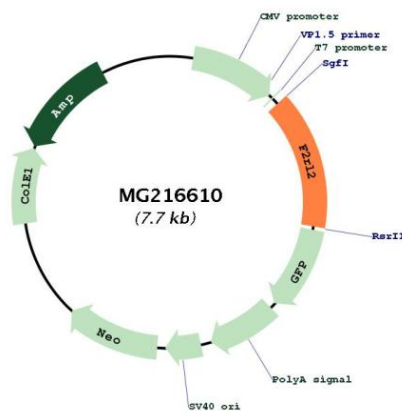
**Locus ID:** 14064

**UniProt ID:** [O08675](#)

**Cytogenetics:** 13 50.38 cM

**Gene Summary:** High affinity receptor for activated thrombin coupled to G proteins that stimulate phosphoinositide hydrolysis. May play a role in platelets activation.[UniProtKB/Swiss-Prot Function]

### Product images:



Circular map for MG216610