

Product datasheet for **MG216607**

Pde4a (NM_183408) Mouse Tagged ORF Clone

Product data:

| | |
|---------------------------|--|
| Product Type: | Expression Plasmids |
| Product Name: | Pde4a (NM_183408) Mouse Tagged ORF Clone |
| Tag: | TurboGFP |
| Symbol: | Pde4a |
| Synonyms: | D9Ertd60e; Dpde2 |
| Mammalian Cell Selection: | Neomycin |
| Vector: | pCMV6-AC-GFP (PS100010) |
| E. coli Selection: | Ampicillin (100 ug/mL) |



[View online »](#)

ORF Nucleotide Sequence:

>MG216607 representing NM_183408
 Red=Cloning site Blue=ORF Green=Tags(s)

TTTTGTAATACGACTCACTATAGGGCGGCCGGGAATTCGTCGACTGGATCCGGTACCGAGGAGATCTGCC
 GCC**CGGATCGCC**

ATGGAGCCTCCGGCCGCCCTCGGAGAGGAGCCTGTCTCTCTCTTCCCGGGCCCGAGAGGGCCAGG
 CCACCCTGAAGCCGCCCCCCAGCACCTGTGGCGGCAGCCGAGGACCCGATCCGCATCCAGCAGCGCGG
 CTA^{Red}CTCGGACAGT^{Blue}GCCGAGCGCTCAGAGCCAGAGCGCTCGCCGCACCGGCCCATAGAGCGCGCCGACGCC
 GTGGACTGCGGACCGGCCAGGCCTGCGGACTACCCGCATGTCTGGCCCTCGTCTTCCACGGCACCG
 GTACCGGCGGAGGCAGCAGTAGGCGCTTGGAGGCAGAAAATGGGCCAACACCGTCCCCTGGCCGAGCCC
 CCTGGACTCGCAGGCGAGCCGGGGCTTATGCTGCATGCCGGGGCAGCCACCAGCCAGCGCCGAGAATCC
 TTCCTCTATCGCTCAGACAGCGACTATGACATGTACCGAAGACTATGTCCAGGAACTCATCCGTCGCCA
 GCGAAGCGCATGGTGAAGACCTATTGTGACCCCGTTTGCCAGGTGCTGGCCAGTCTCCGCAACGTTTCG
 AAGCAACTTCTACTCCTAACCAATGTGCCATCCCCAGCAACAAGAGGTCCCCGCTGGGCGGGCCACCC
 TCTGTCTGCAAGGCCACACTGTCAGAGGAGACATGCCAGCAGCTGGCCCGGAGACCTGGAAGAGCTGG
 ATTGGTGCCTGGAGCAGCTGGAGACCATGCAGACCTACCGCTCTGTGACGGAGATGGCCTCACACAAGTT
 TAAAAGGATGCTGAACCGGGA^{Green}ACTCACACACCTGTGCGAAATGAGCAGGTGAGGAAACCAGGTCTCAGAG
 TACATTTCCAACAGTTCCTAGACAAGCAGCAGCAAGTGGAGATCCCATCGCCCACGCCGACAGAGAC
 CCTTCCAGCAGCCCCACCAGCAGCAGTGCAGCAGGCCAGCCCATGTCTCAGATCACAGGGCTGAAAAA
 GCTGGTACACACCGGAAGCTTGAACATCAATGTCCCACGATTTGGAGTCAAGACAGATCAGGAGGACCTC
 TTAGCACAAAGAACTGGAGA^{Green}ACTTGAGCAAAATGGGGCCTGAACATCTTTTGTGTGTCGGAGTACGCTGGAG
 CGCGTTCACTCAGCTGTATCATGTATCATGATATCCAGGAGCGGGACTTACTGAAGAAATTCACATCCC
 CGTGGACACCATGATGACATACATGCTGACGCTGGAGGACCACTACCACGCTGACGTGGCCTACCACAAC
 AGCCTGCACGCAGCCGATGTGCTACAGTCCACACATGTGCTGCTGGCCACGCCTGCACTGGATGCCGTGT
 TCACAGACCTGGAGATTCTTGTGCTCTCTTCGCTGCTGCCATCCATGACGTGGACCACCCTGGCGTCTC
 CAACCAGTTCCTAATCAACACCAATTGGAGCTGGCATTGATGTACAACGATGAGTCTGTGCTTGAAGAC
 CACCACCTGGCTGTGGGATTCAAGCTGCTGCAAGAAGAGA^{Green}ACTGCGACATCTTCCAGAACCTCAGCAAGC
 GCCAGCGGCAGAGCCTGCGCAAGATGGTCATCGACATGGTGTGGCCACAGACATGTCCAAGCACATGAC
 CCTTCTGGCTGACCTGAAGACTATGGTAGAGACGAAGAAAGTACCAGCTCTGGAGTCTCTTGTGCTGGAC
 AACTACTCTGACCGTATCCAGGTCTCAGGAACATGGTGCATGTGCAGACCTCAGCAATCCCACCAAGC
 CCCTGGAGCTGTACCGACAATGGACTGATCGCATCATGGCTGAGTTCTTCCAGCAGGGTGACCGAGAACG
 GGAACGCGGAATGGAGATTAGCCCCATGTGTGACAAGCACACAGCCTCTGTGGAGAAGTCTCAGGTGGGC
 TTCATCGACTATATTGTTCA^{Green}CCACTGTGGGAGACGTGGGCCGATCTCGTCCACCCCGATGCCAAAGACA
 TCCTGGACACGCTGGAAGACAACCGGATTGGTATCACAGTGCCATCCGCCAGAGTCCCTCCCAACCCCT
 GGAAGAGGAGCCAGGAGTGTCTCAGCGATCCGGCCCTGCCTGACAAGTTCCAATTTGAGCTCACCTTGGAG
 GAAGAGGATGAAGAGGATTCATTGGAGGTTCCAGGATTGCCTTGCCTGAGGAACTCTCCTGGCTCCAC
 ATGATACCAGAGCTCAAGCCATGGAACAGTCAAAGGTCAAAGGCCAGAGCCCTGCTGTTGTGGAGGTAGC
 AGAGAGTTTGAAGCAGGAGACAGCCTCAGCACATGGCGCTCCTGAGGAGTCCGCGGAGGCTGTGGGCCAT
 TCCTTCAGCCTTGAAACCTCTATTCTGCCTGACTTGAGGACCCTGTCCCCTCAGAGGAGGCCAGGGCC
 TCCTGGGCTCCCTCCATGGCGGCAGAGGTGGAGGCCCAAGAGACCATCTGGTGCCATGAGGGCTTG
 TTCTGCCTGCTCGGGGACATCAGGAGACAATTCTGCCGTCATCTGCTCCAGGCAGGTGGGGTCAAGT
 GGAGACCCTGCC

ACGCGTACGCGGCCGCTCGAG - GFP Tag - GTTTAA

Protein Sequence: >MG216607 representing NM_183408
Red=Cloning site Green=Tags(s)

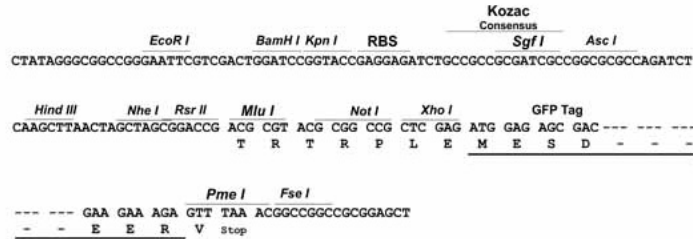
MEPPAAPSERLSLSLPGPREGQATLKPPPQHLWRQPRTPIRIQQRGYSDSAERSEPERSPHRPIERADA
VDTGDRPGLRTRMSWPSSFHGTGTGGSSRRLEAENGPTSPGRSPLDSQASPLMLHAGAATSQRRES
FLYRSDSDYDMSPKTMSRNSSVASEAHGEDLIVTFPAQVLASLRNVRSNFSLLTNVPIPSNKRSPGPP
SVCKATLSEETCQQLARETLEELDWCLEQLETMQTYRSVSEMASHKFKRMLNRELTHLEMSRSGNQVSE
YISNTFLDKQHEVEIPSPTRQRPFQPPPAAVQQAQPMQITGLKLVHTGSLNINVPFRGKTDQEDL
LAQELENLSKWGLNIFCVSEYAGGRSLSCIMYTIQERDILLKFFHIPVDMMTYMLTLEDHYHADVAYHN
SLHAADVLSQSTHVLLATPALDAVFTDLEILAALFAAAIHDVDHPGVSQFLINTNSELALMYNDESLEN
HHLAVGFKLLQEENCDFQNLKRQRQSLRKMVIDMVLATDMSKHMTLLADLKTMVETKKVTSQVLLLD
NYSRIQVLRNMVHCADLSNPTKPLELYRQWTDRIAEFFQGDREERGMIEISPMCDKHTASVEKSQVG
FIDYIVHPLWETWADLVHPDAQILDLEDRDNYHSAIRQSPSPTLEEEPGVSDPALPDKFQFELTLE
EEDEEDSLEVPGLPCTEETLLAPHDTRAQAMEQSKVKGQSPAVVEVAESLKQETASAHGAPEESAEAVGH
SFSLETSILPDLRRLSPSEEAQGLLGLPSMAAEVEAPRDHLAAMRACSACSGTSGDNSAVISAPGRWGS
GDPA

TRTRPLE - GFP Tag - V

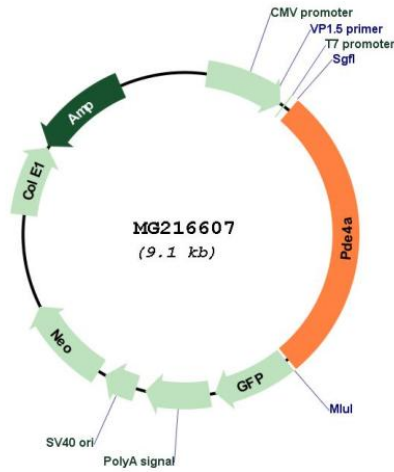
Restriction Sites: Sgfl-MluI

Cloning Scheme:

Cloning sites used for ORF Shutting:



Plasmid Map:



| | |
|-------------------------------|---|
| ACCN: | NM_183408 |
| ORF Size: | 2532 bp |
| OTI Disclaimer: | The molecular sequence of this clone aligns with the gene accession number as a point of reference only. However, individual transcript sequences of the same gene can differ through naturally occurring variations (e.g. polymorphisms), each with its own valid existence. This clone is substantially in agreement with the reference, but a complete review of all prevailing variants is recommended prior to use. More info |
| OTI Annotation: | This clone was engineered to express the complete ORF with an expression tag. Expression varies depending on the nature of the gene. |
| Components: | The ORF clone is ion-exchange column purified and shipped in a 2D barcoded Matrix tube containing 10ug of transfection-ready, dried plasmid DNA (reconstitute with 100 ul of water). |
| Reconstitution Method: | <ol style="list-style-type: none">1. Centrifuge at 5,000xg for 5min.2. Carefully open the tube and add 100ul of sterile water to dissolve the DNA.3. Close the tube and incubate for 10 minutes at room temperature.4. Briefly vortex the tube and then do a quick spin (less than 5000xg) to concentrate the liquid at the bottom.5. Store the suspended plasmid at -20°C. The DNA is stable for at least one year from date of shipping when stored at -20°C. |
| RefSeq: | NM_183408.3 , NP_899668.1 |
| RefSeq Size: | 4658 bp |
| RefSeq ORF: | 2535 bp |
| Locus ID: | 18577 |
| UniProt ID: | O89084 |
| Cytogenetics: | 9 7.73 cM |
| Gene Summary: | Hydrolyzes the second messenger cAMP, which is a key regulator of many important physiological processes.[UniProtKB/Swiss-Prot Function] |