

Product datasheet for **MG216569**

Nav3 (NM_001081035) Mouse Tagged ORF Clone

Product data:

Product Type:	Expression Plasmids
Product Name:	Nav3 (NM_001081035) Mouse Tagged ORF Clone
Tag:	TurboGFP
Symbol:	Nav3
Synonyms:	4732483H20Rik; 9630020C08Rik; mKIAA0938; POMFIL1; Pomfil1p; unc53H3
Mammalian Cell Selection:	Neomycin
Vector:	pCMV6-AC-GFP (PS100010)
E. coli Selection:	Ampicillin (100 ug/mL)
ORF Nucleotide Sequence:	>MG216569 representing NM_001081035 Red=Cloning site Blue=ORF Green=Tags(s)

GACGTTGTATACGACTCCTATAGGGCGGCCGGAATTCGTCGACTGGATCCGGTACCGAGGAGATCTGCC
GCCGGCGGCC

ATGCTGTCTTGGGGTTCCTCAAACACTGAGACAGCCAGCTGTTGGGCCAAAGCCTGTTACGCTGCTC
TTCCGATACCGAATCTTGGCATCAGTGTGTACGGCGCTTTCCTCGAGACCTCTGGAATTTGCTACACC
GGAGCGCTCAATGCTTTCGTGCCAGCTCACATTAACCTGTGAGTTGGAGAGAAGAAAGCCCTG
CAGGGAACAGCCAAGGAGATCGAAGACAGCAAGATTTACTGACTGGGCCAACCTACCTGGCAAAT
CCGGCCACAAGCGGCTGATCAAGGACTTGCAGCAGGACATTGCGGACGGGTCTTCTGGCAGACATCAT
CCAGATCATTGCAAATGAGAAAGTGAAGATATCAATGGATGTCCGAGAAGTCAGTCTCAGATGATTGAA
AATGTCGATGTCTGCCTTAGCTTCTGGCAGCCCGAGGAGTAAACGTTCAAGGCCTATCTGCTGAAGAGA
TAAGAAATGGAACCTAAAAGCCATCCTAGGGCTCTTTTTAGCTTGTCTCGCTACAAGCAACAGCAGCA
TCATCAACAGCAGTATTACAGTCCTTGGTGGAGCTTTCAGCAGCGAGTGACTCATACCGCCCTCAGTCC
GAAGCCAGCCAGGCCAAAACCCAGCAAGATATGCAGTCCAGTCTGACAGCCAGATATGCAGCTCAGTCTA
AACACAGTGGAATTGCAACCAGTCAGAAAAGCCTACTAGGCTTCCAGGGCCCTCAGGGTGCCAGCTGC
GAGCAGCAGCAACAAGGCTCAGGGAGCCTCCAATCTCAATAGGAGAAGTCAGAGCTTTAACAGCATTGAC
AAAAACAAGCCTCAAATATGCAAATGGAATGAAAAGATCCCCAAAGGACCTCAACCATCTCAG
GTATAAATGGAACACACAGCCTCCAGCACTTCTGGGCAACCCCAAGCCTCAGCCATCCCTTCCCGAG
TGCCAGCAAGCCCTGGCGCAGCAAGTCCATGAATGTCAAGCACAGTGCCACCTCTACCATGCTGACAGTG
AAGCAGCAAGCCAGCCACTTCTCCCACACCATCTTCAGACAGACTGAAGCCCTGTACAGAAGGGG
TCAAAGCGCTCCTTCGGGACAGAAATCTATGCTTGAATAATCAAGCTGGTAAATGCCCGACAGCACT
ACGCCCTCAGGCTCCAGTCTTGGACCTAACGATGGTGAAGAGAAGATGATGCCTTTTCTGAATCA
GGGAAATGGAAGTTTTAACAGTGGTCTGAATAGTGGCGCTCGACAAACAGCAGCCCCAAAGTGTAC
CTAAATTAACCCCTCCGAAAGCGGGAAGCAAAAATTTAGCAATAAAAAGTCTTTGCTGCAGCCAAAAGA
AAAAGAGAAAAGACCAGGGACAAGAATAAAGCCTGCGCTGAGAAGTCGGGAAAAGAAGAGAAGGACCAG



[View online >](#)

GTGACGACGGAGGCAGCTCCGAAAAAGACTTCTAAAATTGCAAGCTTGATCCCAAAGGGCAGCAAGACTG
 CAGCGGCCAAGAAAGAAAGCTTAATTCCATCGTCCAGTGGAAATCCAAAGCCAGGCTCAAAGGTGCCAC
 GCCAAAGCAAACCTATTTACCTGGCAGCGCAGCAAGTAAAGAGTCTGAGAAATTCAGGACTAGCAAGGGA
 AGCTCTTCTCAGGCCTTCCCAAAGGCCATCACAGCGGAGAAAGCAAGCACGCCAGCCTCTTACCCCTC
 TGGATGGGCGGGAAGCTGGGCAAGCGTCTCCCTCCAGCTCCTGTGTTATGCAGGTACACACAGCAGTGG
 ACAGAGCCCTGGCAATGGAGCTGTCCAGCTTCTCAGCAGCAGCAGCATAGCCATCCCAACACAGCCAGC
 GTGGCTCCGTTTCAATTTATAGGGCACATTCAGAAAATGAAGGCACCTCTTTACCACCTGTGACTCCTGTA
 CCAGTCCCAAAAAGATGGATTCTTCTACAGTAAGACGGCTAAGCAATGCCTAGAAGAGATATCTGGGGA
 GGACCCTGAAGCTCGGAGAATGCGCACAGTCAAGAACATAGCAGATCTGAGGCAGAACTTGAAGAGACA
 ATGTCCAGTCTTCGAGGGACCCAGATAAGCCACAGCACCTGGAGACAACCTTTGATACGACTGTGACAA
 CTGAAGTGAATGGAAGGGCCATCCCAACCTGACAAGCCGACCTTCCCCATGACCTGGAGACTGGGTCA
 AGCGTGCCTCGTCTACAGGCTGGAGATGCCCCCTCCATGGGCGCTGGATATTCTCGAAGCGGTACCAGC
 CGATTCATCCACACGGATCCCTCCAGGTTTATGTATACCAGCCTCTCCGCCGAGCTGCTGTCTCGCGTC
 TGGGAAACATGTCACAAATAGATATGAGCGAGAAAGCAAGCAGTGACCTGGATGTGTCTTGAAGTGA
 GTTTGGTGGATACATGAGCGATGGTGTATCCTTGGGAAGAGTCTGAGAGCGGATGATATCAACAGTGGG
 TACATGACAGATGGTGGGCTCAACCTATATACCAGAAGTCTTAACCGAGTCCCGGACACAGCAACTTCCA
 GAGATGTACATACAGAGAGGCGTTCACGATGTGACAGTGGACGCAGACAGCTGGGATGACAGCAGTTCTGT
 GAGCAGTGGCCTCAGTGACACACTTGATAACATTAGCACAGATGACCTCAACACCACGTCTCCATCAGT
 TCTTACTCCAACATCACTGTCCCCTCCAGGAAGAACACTCAGCTGAAAACAGATGCGGAGAAAACGTTTCA
 CAACAGATGAGACCTGGGATAGTCTGAGGAGCTGAAGAAAGCCGAGGGAGATTGTGACAGCCATGGTGA
 CGGAGCCGCCAAGTGAAGGGTGTACTTCTGGACTTGTGAAAGACTCGGAGAAGACAGGGCAGAAAAGCC
 AGCCTGTCTGTCTCAGACAGGCTCCTGGAGGAGAGGCATGTCTGCCAGGGAGGAACTCCAGCTACAG
 CTAGGCAGAAAACCCAGCACAAAGTGCATCAAGACCCCTGGGAAGACAGATGATGCCAAAGCTTCCGAGAA
 AGGGAAAACTCCTCTCAAAGGATCATCTTGAAGGTCTCCTTTCAGATGCAGGGAAAAGCAGCGGGGAT
 GAAGGGAAAAAGCCACCGTCCAGGATTGGAAGATCGACAGCCAGCAGTTCTTTTGGATACAGAAGCCAA
 GTGGTGTAGGGGCTTCCACTATGATTACCAGCAGCGGTGCCACCATCACAAGCGGTTTCCAGTACTGAGG
 GAAAAATCCCAAATCCGCTGCCATTGGTGGGAAGTCCAATGCAGGAAGGAAAACAGCCTGGACGGGTCC
 CAGAATCAAGATGATGTTGCTGCACGTGAGCTCGAAGACCACCTCCAGTACCGTAGTTTGCCTCCGCT
 CTTCTAAGTCCAGCACCAGCGGAATCCCTGGGAGAGGTGGCCACAGGTCGAGCACCAGCAGCATTGATTC
 CAATGTCAGCAGCAAGTCACTGTCAACCAACAGACAAAGAGAAGGAGAAAGTAGCAGTGTGATTCAGAGA
 GGGTTTCCCTGTGAGGTTCCCAAAATCCAGCCACCTCTGCCAGTGCCTGTGGGACTCAAGGGCTCAG
 ACAGCCAGGGTCCAAATATCCAGATATTGCCTCGCCACATTTCAAGGTTGTTCCGGTGCCAAGGCAGGC
 GGCAAAATCTGCCTCCGCACCTAATACTGAGGGGGCGAAGTCTCCTCAGTAGTGCTCAGCCCTAGTACCT
 CTTTAGCCCGACAAGGCAGTCTGGAGTCAACCGTCCGCTACGGGAAGCATGGGCGAGTGTGGTGGGCT
 GAGTGGCAGCAGCAGCCCTCTTCAATAAACCCTCAGACCTAATACAGATGTTATAAGCTTAAGTCAC
 TCCTTGGCTTCCAGCCAGCGTCCGTTCACTCTTTCACATCCGGTGGGCTTGTGTGGGCTGCCAATCTGA
 GCAGTTCTCTGCCGGCAGCAAGGACACTCCAAGTTACCAGTCCATGACTAGTCTCCATACGAGCTCTGA
 TGCCATTGACCTGCCCTCAGCCATCATGGCTCCCTGTCTGGACTGACCACAGGCACTCAGAGGTGCAG
 AGCCTGTCTCATGAGAACGGGTAGTGTGAGATCTACTCTCTCAGAAAGCATGCAGCTTGACAGAAATACAC
 TACCCAAAAAGGGACTAAGATACACCCATCATCTCGGCAGGCCAACCAAGAAGAAGGCAAAAGAGTGGCT
 GCGATCGATTCCACTGGCGGGTGCAGGATACTGGCAACCAGTCTCCCTTGGTCTCCCCTTCTGCCATG
 TCATCGTCAGCCACCGAAAAATACACTTTTCAAACCTGGTGTGAGTCCCACCAACCTCTCCAGTTTAAAC
 TGCCTGCACCCAGTATGATGCGCTCCAGCAGTATCCCCGCCAGGACTCCTCCTTCGACCTATGATGA
 TGCCAGCTTTGGGTAGTGCAACTTCCCTGGAGGAAAGGCCACGGGCCGTTAGCCACTCCGGCTCATT
 AGAGACAGCATGGAGGAAGTTCATGGCTTCTCACTGTCTTGGTCTCCAGCACATCATCCCTTTACTCTA
 CGGCTGAAGAGAAGGCTCATTGAGCAAAATCCATAAGCTACGGAGAGAAGTGGTGGCTCCAGGAGAA
 AGTCGCTACCCTCACGTCTCAGCTGTGAGCAAAATGCTCACCTTGTAGCAGCTTTTGAAGAGTTTAGGG
 AATATGACTGGCCGTTTGCAAAGTCAACCATGACAGCGGAACAAAAGGAATCTGAGCTTATCGAACTGC
 GGGAAACCATGAAATGTTGAAGGCCGAGAAGTCTGCTGCCAAAGCAGCCATTGAGGGAGCACTGAATGG
 CCCAGACCACCTCCCAAAGATCTCCGCATCAGAAGACAGCACTCCTCTGAAAGTGTCTAGTATCAAC
 AGCGCAACGAGCCATTCCAGCATTGGCAGTGGTAAATGATGCTGACTCCAAGAAAAAGAAGAAGAAAAACT

GGGTGAAGCTCTAGAGGAAGTGAGCTGAGAAGTTCTTTCAAGCAAGCCTTTGGCAAGAAAAAGTCCACCAA
GCCGCCTTCTCGCATTTCGGACATTGAAGAGCTGACAGACTCATCCCTGCCAGCCTCCCCAAGCTACCC
CACAATGCTGGCGAGAGTGGCTTTCATCCATGAAGCCCTCGCAGTCAGCCTCAGCGATCTGCGAGTGCA
CTGAGGCTGAGGCCGAGATCATTCTGCAGCTGAAGAGCGAGCTCAGAGAGAAGGAATTAATAACAGA
TATAAGGCTGGAGGCCCTCAGCTCTGCTCACCATCTCGATCAGATCCGGGAAGCCATGAACCGGATGCAG
AACGAAATTGAAATATTGAAGGCTGAAAATGATCGGCTGAAGGCAGAGACTGAAAACACAGCTAAACCTG
CCAGGCCCTTCTGATTCTCTCAAGCACAGCCTTCTTCTTCTTTCAGCCAGTCCTTAGGGCTTTCACT
CAACAACCTGAACATCACAGAGTCTGTTACCTCAGATATTTTGGCTAGATGACACTGGTGATGCAACAGGA
CATAAGGATGGCCGAGTGTGAAAATTATAGTGTCCATCAGCAAGGGCTACGGTCGAGCCAAGGACCAGA
AGTCTCAGGCATATTTGATAGGATCCATTGGTGTAGTGGAAAACTAAATGGGATGTCTTAGATGGTGT
CATTAGGCGTCTCTTAAGGAATATGTGTTCCGAATTGATACATCCTCTAGTCTTGGTCTGAGCTCTGAC
TGCATTGTAGCTACTGTATAGGAGATTAATTAGATCTCATAACCTGGAAGTGCCTGAACTGCTACCTT
GTGGATACCTGGTGGAGATAATAATATCATCACTGTGAACCTGAAAGGGGTAGAAGAAAATAGTTTGA
CAGTTTTGTTTTGATACACTGATTCTAAGCCAATTACCCAAAGGTAATTTAATTGTTGATGGAGCAC
CACAGAATTATCCTCTCAGGACCAAGCGGGACGGGAAAGACCTATTTAGCAAACAACTTGCTGAATATG
TCATAACAAAATCTGGAAGGAAAAAGACAGAAGATGCCATTGCTACCTTTAATGTGGACCACAAGTCAAG
TAAGGAACTGCAGCAGTATCTTGCCAACCTGGCTGAACAATGCAGTGCAGACAATAATGGGGTAGAGCTC
CCTGTTGTATAATTCTGGACAATCTTACCATGTGGGCTCTTTGAGTGACATCTTCAATGGTTTTCTCA
ATTGTAATAACAACAAATGCCCTTATATTATTGGAACCATGAATCAGGGAGTCTCCTCATCACCAAAATTT
AGAACTACATACAATTTAGGTGGGTATTATGTGCAACCCACACGGAACCCGTGAAAGGCTTTTTAGGC
AGGTATCTTCGCAGGAACTGATAGAGATGGAATTTAGAGGAATATACGTAATAACGACCTGGTCAAAA
TTATCGACTGGATTCTAAGACATGGCATCATCTCAATAGTTTTCTGGAACTCACAGTTCTTCTGATGT
CACCATTGGTCTCGGCTCTTCTTCTTCCCTTGGCCATGGATGTGGAAGTTCTAGGGTGTGGTTCATGGAT
CTTTGGAATTATTCCTTGGTACCTTATGTTCTGGAGGCAGTGAGGGAAGGCCTACAGATGTATGGGAAAC
GTGCACCGTGGGAAGATCCCTCCAAGTGGTCTTGTACACGTACCCATGGAGTTCTGCATCCTTGCCTCA
GGAAGGCCAGCTTTACTGCAGTTGCGGCCAGAAGATGTTGGCTACGAAGCCTGCACATCTACAAAGGAA
GCCACAACGTCAAAGCACATTCCCAGACTGATACAGAAGGGGACCCCTTGATGAATATGCTAATGAAGC
TCCAAGAAGCCGCAATTACCCAGCACTCAAAGCTGTGACGGCGATAGTGTGAGCCACCGTGAAGACAT
TTTGGATACATCTATTGAATCCACCTC

ACGCGTACGCGGCCGCTCGAG - GFP Tag - GTTTAA

Protein Sequence: >MG216569 representing NM_001081035
 Red=Cloning site Green=Tags(s)

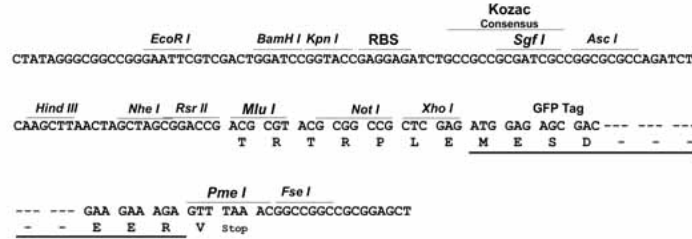
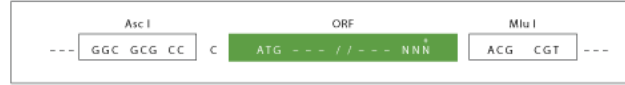
MPVLGVASKLRQPAVGPKPVHAALPIPNLGISVSRRCSSRPLEFATPERSMLSCQLTLKSTCFEGEKKAL
 QGTAKEIEDSKIYTDWANHYLAKSGHKRLIKDLQQDIADGVLLADIIQIIANEKVEDINGCPRSQSQMIE
 NVDVCLSF LAARGVNVQGLSAEEIRNGNLKAILGLFFSL SRYKQQHHQQYYQSLVELQQRVTHTAPQS
 EASQAKTQQDMQSSL TARYAAQSKHSGIATSQKKPTLPGPSRVPAASSSNKAQGASNLNRRSQSFNSID
 KNKPPNYANGNEKDSPKGPQPSSGINGNTQPPSTSGPPASAIIPSPSASKPWRKSMNVKHSATSTMLTV
 KQPSPATSPTPSSDRPKPPVTEGVKSAPSGQKSMLEKFKLVNARTALRPPQAPSSGPNDDGGREDDAFSES
 GEMEGFNLSGGSTNSSPKVSPKLTTPKAGSKNF SNKSLLPKEKEEKTRDNKACAESGKEEKDQ
 VTTEAAPKKTSKIASLIPKGSKTAACKESLIPSSSGIPKPGSKVPTPKQTI SPGSAASESEKFRSTSG
 SSSQAFPKAITAEKASTPSLSTPLDGREAGQASPPSSSCVMQVTHSSGQSPGNQAVQLPQQQHHSHPNAT
 VAPFIYRAHSENEGTSPPADCSPTKMDSSYSKTAKQCLEEISGEDPEARRMRTVKNIADLRQNLLET
 MSSLRGTQISHSTLETTFTTTEVNGRAIPNLTSRPSMTWRLGQACPRQLAGDAPSMGAGYSRSGTS
 RFIHTDPSRFMYTTPLRRAAVSRLGNMSQIDMSEKASSDLVSSSEVDVGGYMSDGDILGKSLRADDINS
 YMTDGGNLNLYTRSLNRVPTATSRDVIQRGVHDVTVDADSWDDSSVSSGLSDTLDNISTDDLNTSSIS
 SYSNITVPSRKNLQKTDKAEKRSTTDETWDSPEELKKAEGDCDSHGDGAAKWKGATSGLAEDSEKGTQKA
 SLSVSTQTSWRRGMSAQGGTPATARQKTST SALKTPGKTDDAKASEKGTPLKGSLSLQSPSDAGKSSGD
 EGKKPPSGIGRSTASSSFGYKPKSGVGASTMITSSGATITSGSATLGKIPKSAIIGGKSNAGRKTSLDGS
 QNQDDVVLHVSSKTTLQYRSLRPPSKSSTSGIPGRGGHRSSTSSIDSNVSSKSAGATTSKLRPTKIGSG
 RSSPVTVNQTDKEKEKVAVSDSESVLSGSPKSPTASACGTQGLRQPGSKYPDIASPTFRRLFGAKAG
 GKSASAPNTEGAKSSSVLSPSTSLARQGSLESPSSGTGSMGSAGGLSGSSSPLFNKPSDLTTDVISL
 SHLASSPVSFSTSGGLVWAANLSSSSAGSKDTPSYQSMSTLHTSSEIDLPLSHHGSLSGLTTGTHEV
 SLLMRTGVSRLSESMQLDRNTLPKKGRLRYTPSSRQANQEKGWLRSHSTGGLQDTGNQSPVSPSAM
 SSSATGKYHFSNLVSPNTLSQFNLPAPSMRSSSIPAQDSSFDLYDDAQLCGSATSLERPRAVSHSGSF
 RDSMEEVHGSSLSVSSSTSLYSTAEKKAHQSEIHKLRRELVASQEKVATLTSQLSANAHVAAFEKSLG
 NMTGRLQSLTMTAEQKESLIELRETIEMKQAQNSAAQAAIQGALNGPDHPPKDLRIRRHSSSESVSSIN
 SATSHSSIGSGNDADSKKKKKNNVNSRGSSELRSFKQAFGKKKSTKPPSSHSIEELTDSSLPASPPLP
 HNAGESGSSMKPSQASAIICECTEAEAEIILQLKSELREKELKLTDIRLEALSSAHLHDQIREAMNRMQ
 NEIEILKAENDRLKAETGNTAKPARPPSDSSSTASSSSRQSLGLSLNNLNITESVTSDILLDDTGDATG
 HKDGRSVKIIIVISKGYGRAKDQKQAYLIGSIGVSGKTKWDVLDGVIRRLFKEYVFRIDTSSSLGLSSD
 CIAASYCIGDLIRSHNLEVPPELLPCGYLVGDNNIITVNLKGEENSLDSFVFDLIPKIPITQRYFNLLMEH
 HRIILSGPSGTGKTYLANKLAEYVITKSGRKKTEDAIATFNVDHKSSKELQQYLANLAEQCSADNNGVEL
 PVVILDLNHHVGSLSDFINGFLNCKYKCPYIIGTMNQGVSSPNLELHHNFRVWLCANHTEPVKGFGLG
 RYLRRKLIEMEIERNIRNNDLVKIIDWIPKTWHHLNSFLETHSSSDVTIGPRLFLPCPMDVEGSRVWFM
 LWNYSLVVYVLEAVREGLQMYGKRAPWEDPSKWLDTYPWSSASLPQEGPALLQLRPEDVGYEACTSKE
 ATTSKHIPQDTEGDPLMMLMKLQEAANYPSTQSCDGDVSHREDILDTSIESTL

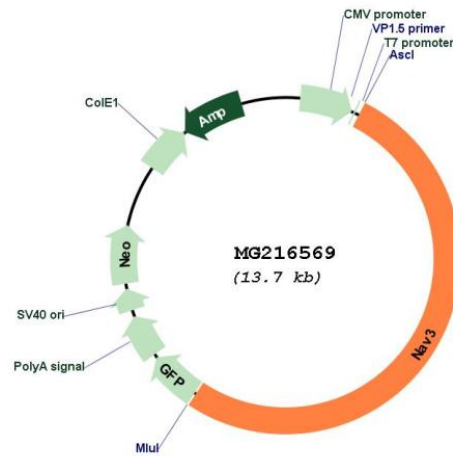
TRTRPLE - GFP Tag - V

Restriction Sites: AscI-MluI

Cloning Scheme:

Cloning sites used for ORF Shuttling:



Plasmid Map:


ACCN: NM_001081035

ORF Size: 7098 bp

OTI Disclaimer: The molecular sequence of this clone aligns with the gene accession number as a point of reference only. However, individual transcript sequences of the same gene can differ through naturally occurring variations (e.g. polymorphisms), each with its own valid existence. This clone is substantially in agreement with the reference, but a complete review of all prevailing variants is recommended prior to use. [More info](#)

OTI Annotation: This clone was engineered to express the complete ORF with an expression tag. Expression varies depending on the nature of the gene.

Components: The ORF clone is ion-exchange column purified and shipped in a 2D barcoded Matrix tube containing 10ug of transfection-ready, dried plasmid DNA (reconstitute with 100 ul of water).

Reconstitution Method:

1. Centrifuge at 5,000xg for 5min.
2. Carefully open the tube and add 100ul of sterile water to dissolve the DNA.
3. Close the tube and incubate for 10 minutes at room temperature.
4. Briefly vortex the tube and then do a quick spin (less than 5000xg) to concentrate the liquid at the bottom.
5. Store the suspended plasmid at -20°C. The DNA is stable for at least one year from date of shipping when stored at -20°C.

RefSeq: [NM_001081035.2](#)

RefSeq Size: 7782 bp

RefSeq ORF: 7101 bp

Locus ID: 260315

Cytogenetics: 10 D1

Gene Summary: May regulate IL2 production by T-cells. May be involved in neuron regeneration.
[UniProtKB/Swiss-Prot Function]