

Product datasheet for **MG216567**

Nkrf (NM_029891) Mouse Tagged ORF Clone

Product data:

Product Type:	Expression Plasmids
Product Name:	Nkrf (NM_029891) Mouse Tagged ORF Clone
Tag:	TurboGFP
Symbol:	Nkrf
Synonyms:	9430034D17Rik; AW124770; C80287
Mammalian Cell Selection:	Neomycin
Vector:	pCMV6-AC-GFP (PS100010)
E. coli Selection:	Ampicillin (100 ug/mL)



[View online »](#)

ORF Nucleotide
Sequence:

>MG216567 representing NM_029891
 Red=Cloning site Blue=ORF Green=Tags(s)

TTTTGTAATACGACTCACTATAGGGCGGCCGGAATTCGTGACTGGATCCGGTACCGAGGAGATCTGCC
 GCC**CGGATCGCC**

ATGGAAAAATTCTTCACATGGCTGAAGGTATTGATATTGGGAGATGCCGTCATATGATCTAATGCTGC
 CCAAACCTTCCAAGGCCAAAAACGCTACCTTTCAACCTACGATGGTCAGAATCCTCCTAAAAAGCAAGC
 CGGTTCCAAATCCATGTGAGAGCTCGTTTTGAGCCTGTACATTTGTAGCTAGTAGTTCAAAGCTGAA
 AGACAGGAAGATCCGATGGCCCTCAAACAAAAGACGTAATGGACGAACACATTTTCCAGCATGCCAA
 GAAACTTCTACCAAGATTATACTCAAGACTCTTTCAGTATCCAGGATGGAAATCTCAATATTGTAATTC
 ATCAGGATTTATTTTACAAAAGACCAGCCTGTAGCAACCAACATGATTTTGTACAGTGGGAACCTGCC
 CCAAGCAGCACATCCCAGCAGGCAAACGTCCAGCCAGCTCCGAGCCTCCTCCTTACAGATGTACCCTG
 AGTCTTGGTTGCCGAGAAGCAGTATTTTATTGAAAAGTTAACAGCAACTATCTGGAAGAACCTTTCTAA
 TCCAGAGATGACTTCTGGATCTGATAAGATTAATTATACCTATATGCTAACTCGTTGTATTCCAGGCATGT
 AAGACAAATCCTGAGTATATATATGCTCCTTTAAAAGAAATTCCTCCTGCTGACATCCCCAAAAATAAAA
 AACTTCTCACGGATGGTTATGCTTGTGAAGTTAGATGCCAAAATATCTACCTAACACAGGTTATGCAGG
 TAGCAAGAATGGGTCCAGAGATCGAGCTACTGAGCTAGCTGTAAAACCTTGCAGAAAGAGGATTGAGGTT
 AGAGTTGTCCGACGGAAATCAAGCACATAATCGGAGAGGACCTTGTGGTGTGTCAGATTGGTATGCTTT
 CATATGAATTTCCCCAGCTCTGAAACCACCAGAAGACCTGGTAGTACTGGGAAAGGATGCTTCTGGGCA
 GCCTATTTTTAATAGTTCTGCCAAACACTGGACCAATTTTGTATTACAGAAAATGCAAAATGATGCAATT
 GGCATCCTTAACAATCCGCCTCATTCAACAAAATGTCAATTGAGTACAAATACGAGATGATGCCAAACC
 GCACATGGCGGTGTCGAGTATTCCTGCAAGATCACTGCTTAGCTGAAGGTTATGGAACCAAGAAAACAAG
 CAAACATGCAGCTGCTGATGAGGCTTTGAAAGTTCTTCAAAAAACACAACCCACTTATCCATCTGTCAAA
 AGTTCCAGTGTCACTCAGGCTTTCACCCAAAGGATCCGAAAAGAAAGATATCAAAGATCTTGTAG
 TTTATGAGAATCTTCCAATCCTGTGTGCACATTTGAATGATACGGCTCAGTTTAAACCGAATGACGGTTGA
 ATATGTCTATGAAAGGATGACAGGTCTCCGCTGGAAATGCAAGGTGATTCTAGAGAGCGAAGTCATTGCA
 GAAGCAGTTGGTGTGAAGAAAAGTGTCAAATACGAAGCTGCTGGAGAAGCTGTAAGACCCTCAAAAAGA
 CCCAGCCGACTGTCATTAACAACCTGAAGAAAGGGACTGTTGAAGATGTGATTTCAAGAAATGAAATCCA
 GGGCCGCTCAGCAGAAGAAGCTTACAAACAGCAAATCAAAGAAGACAACATAGGGAAATCAACTGCTGAGA
 AAGATGGGCTGGACGGTGGTGGTTTAGGGAAATCTGGTGAAGGCATACGGGAGCCTATCTCAGTTAAAG
 AGCAGCATAAGCGAGAAGGCCTTGGTCTAGATGTAGAGAGGGTCAATAAAATGCTAAGAGGGATATAGA
 ACAAATATCAGAAACTATGCCCGCTCTGAAAGCCACTCAGATTTGACCTTCTCCACGGAGCTGACCAAT
 GATGAACGGAAGCAAATCCATCAGATTGCTCAGAAGTATGGCCTGAAGAGTAAGTCTCATGGGGTGGGCC
 ATGATAGGTACCTGGTGGTAGGTCGAAAACGGCGGAAGGAAGACCTACTAGATCAACTCAAACAGGAGGG
 CCAAGTGGGACATTATGAGCTTGTATGCCCAAGCAAAC

ACGCGTACGCGGCCGCTCGAG - GFP Tag - GTTTAA

Protein Sequence: >MG216567 representing NM_029891
 Red=Cloning site Green=Tags(s)

MEKILHMAEGIDIGEMPSYDLMLPKPSKGQKRYLSTYDGGNPPKKQAGSKFHVRARFEPVHFVASSSKAE
 RQEDPYGPQTKDVGNGRTHFASMPRNFYQDYTDQSF SIQDGN SQYCNSSGFIFTKDQPVATNMYFDSGNPA
 PSSTSQQANCQPAPEPPPSQMYPESLVAEKQYFIEKLTATIWKNL SNPEMTSGSDKINITYMLTRCIQAC
 KTNPEYIYAPLKEIPPADIPKKNKLLTDGYACEVRCQNIYLTTGYAGSKNGSRDRATELAVKLLQKRIEV
 RVVRRKFKHIIGEDLVVCQIGMLSYEFPPALKPPEDLVVLGKDASGQPIFNSSAKHWTNFVITENANDAI
 GILNNSASFNKMSIEYKYEMMPNRTWRCRVFLQDHCLAEGYGTKKT SKHAAADEALKVLQKTQPTYPSVK
 SSQCHSGSSPKGSGKKKDIKDLVYENSSNPVCTLNDTAQFNRMTEYVYERMTGLRWKCKVILESEVIA
 EAVGVKKS VKYEAAGEAVKTLKKTQPTVINLKKGTVEDVISRNEIQGRSAEEAYKQKIKEDNIGNQLLR
 KMGWTGGGLGKSGEGIREPISVKEQHKREGLDVERVNKIAKRDI EQIRNYARSESHSDLTFSTELTN
 DERKQIHQIAQKYGLKSKSHGVGHDRYL VVGRKRRKEDLLDQLKQEGQVGHYELVMPQAN

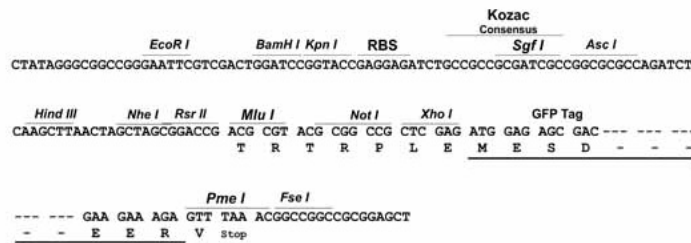
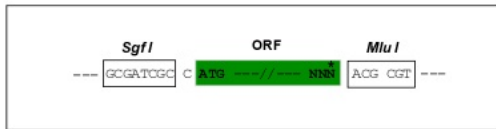
TRTRPLE - GFP Tag - V

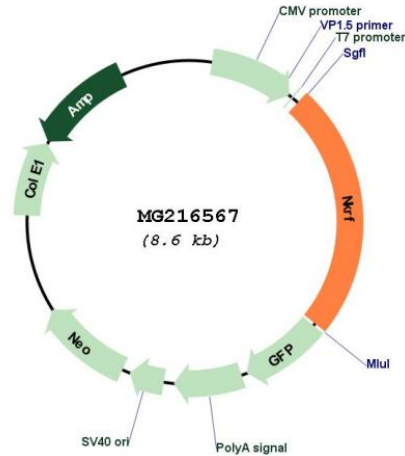
Restriction Sites:

SgfI-MluI

Cloning Scheme:

Cloning sites used for ORF Shuttling:



Plasmid Map:


ACCN: NM_029891

ORF Size: 2070 bp

OTI Disclaimer: The molecular sequence of this clone aligns with the gene accession number as a point of reference only. However, individual transcript sequences of the same gene can differ through naturally occurring variations (e.g. polymorphisms), each with its own valid existence. This clone is substantially in agreement with the reference, but a complete review of all prevailing variants is recommended prior to use. [More info](#)

OTI Annotation: This clone was engineered to express the complete ORF with an expression tag. Expression varies depending on the nature of the gene.

Components: The ORF clone is ion-exchange column purified and shipped in a 2D barcoded Matrix tube containing 10ug of transfection-ready, dried plasmid DNA (reconstitute with 100 ul of water).

Reconstitution Method:

1. Centrifuge at 5,000xg for 5min.
2. Carefully open the tube and add 100ul of sterile water to dissolve the DNA.
3. Close the tube and incubate for 10 minutes at room temperature.
4. Briefly vortex the tube and then do a quick spin (less than 5000xg) to concentrate the liquid at the bottom.
5. Store the suspended plasmid at -20°C. The DNA is stable for at least one year from date of shipping when stored at -20°C.

RefSeq: [NM_029891.2](#), [NP_084167.2](#)

RefSeq Size: 3279 bp

RefSeq ORF: 2073 bp

Locus ID: 77286

UniProt ID: [Q8BY02](#)

Cytogenetics: X A3.3

Gene Summary: Interacts with a specific negative regulatory element (NRE) 5'-AATTCCTCTGA-3' to mediate transcriptional repression of certain NK-kappa-B responsive genes. Involved in the constitutive silencing of the interferon beta promoter, independently of the virus-induced signals, and in the inhibition of the basal and cytokine-induced iNOS promoter activity. Also involved in the regulation of IL-8 transcription (By similarity).[UniProtKB/Swiss-Prot Function]