

Product datasheet for **MG216557**

Adra2c (NM_007418) Mouse Tagged ORF Clone

Product data:

Product Type:	Expression Plasmids
Product Name:	Adra2c (NM_007418) Mouse Tagged ORF Clone
Tag:	TurboGFP
Symbol:	Adra2c
Synonyms:	Adra-2c; alpha2-C4; alpha2C; [a]2C
Mammalian Cell Selection:	Neomycin
Vector:	pCMV6-AC-GFP (PS100010)
E. coli Selection:	Ampicillin (100 ug/mL)



[View online »](#)

ORF Nucleotide Sequence:

>MG216557 representing NM_007418
 Red=Cloning site Blue=ORF Green=Tags(s)

TTTTGTAATACGACTCACTATAGGGCGGCCGGGAATTCGTCGACTGGATCCGGTACCGAGGAGATCTGCC
 GCC**GCGATCGCC**

ATGGCGTCCCCAGCGCTGGCCGCGCGCTGGCGCGCGCGCGCTGAGGGCCCCAACGGGAGCGACGCGG
 GCGAATGGGGTAGCGGCGGGGGTCCCAACGCCTCGGGGACCGACTGGGTGCCACCGCCGGGCCAGTACTC
 CGCAGGTGCTGTGGCGGGTTGGCAGCTGTGGTGGTTTTCTCATCGTTTTACCGTGGTAGGCAATGTG
 CTCGTGGTGATCGCTGTGTTGACCAGCCGAGCACTGCGCGCCCCGAGAACCTTCTCTGGTGTCTCTGG
 CCTCAGCTGACATCTGGTGGCCACTGGTATGCCCTTTTCTCTGGCCAATGAGCTCATGGCCTACTG
 GTACTTCGGGCAAGTGTGGTGTGGTGTATACCTGGCACTGGACGTGCTTCTGCACCTCGTCCATCGT
 CACCTGTGTGCCATTAGTCTGGACCGCTACTGGTCGGTGACGCAAGCGGTAGAGTACAACCTGAAGCGCA
 CGCCGCGCGGTGTCAAGGCCACCATCGTGGCCGTGTGGCTCATCTCCGCTGTATCTCTCCCGCTCT
 CGTCTCGTTCTACCGCCGCGCCGACGGCGCCGCTATCCGCACTGCGGCCTCAACGATGAGACCTGGTAC
 ATCTTGTCTCTGCATAGGCTCCTTCTCGCGCCCTGCCTCATCATGGGCTGGTCTATGCGCGCATCT
 ACCGCGTGGCCAAGCTGCGCACGCGTACGCTCAGCGAGAAACGCGGCCCGCCGGCCCCGACGGCGCGT
 CCCGACCACAGAGAAATGGGCTGGCAAGGCAGCGGGGAGAACGGGCATTGCGCGCCCCGCGCACTGAA
 GTGGAGCCGGATGAGAGCAGTGGCGCCGAGAGGCGGAGGCGCCGGGGCGCGCTGCGCAGAGGAGGACGGC
 GCGAGAGGGTGTGAGGGGACACGGGAGTGGCGACGACCGGGACCGGGACTGGCAGCCGAGCAGGG
 TGCTCGGACGGCTCTCGGTCCCAGGCCCGGAGGGCGCCTGTGCGGGCCAGCTCGCGCTCCGTGAG
 TTCTTCTGTGCGTGTGGCGCCGGGCGCGCAGCAGTGTGTGCCCGCAAGGTGGCCAGGCACGCGAGA
 AGCGCTCACCTTCGTGTTGGCGTGGTATGGCGTGTTCGTAAGTGTGCTGGTCCCTTCTTCTCAG
 CTACAGCCTGTATGGCATCTGCCGTGAGGCTGCCAGTTGCCAGAACCGCTCTTTAAGTTTTTCTCTGG
 ATCGGCTACTGCAACAGTTCGCTCAACCCGGTCTACTACTGTCTTCAATCAGGACTTCAGGCGCTCT
 TCAAGCATATCTCTTTGAAAGGAGGAGAAGGGCTTCAGGCAA

AC**GCGCCGCTCGAG** - GFP Tag - GTTAA

Protein Sequence:

>MG216557 representing NM_007418
 Red=Cloning site Green=Tags(s)

MASPALAAALAAAAAEGPNGSDAGEWGSGGGANASGTDWVPPPGQYSAGAVAGLAAVVGFLLIVFTVVGNV
 LVVIAVLTSRALRAPQNLFLVSLASADILVATLVMPFSLANELMAYWYFGQVWCVYALDVLFTSSIV
 HLCALISLDRYWSVTQAVEYNLKRTPRRVKATIVAVWLISAVISFPPLVSFYRRPDGAAYPQGLNDET
 WYILSSCIGSFFAPCLIMGLVYARIYRVAKLRTLSEKRGPAAGPDGASPTTENGLGKAAGENGHCAPP
 RTEVEPDESSAAERRRRRREGALRRGGRRREGAEGDTGSADGPGPLAAEQGARTASRSPGPGRLSRASS
 RSVFFLSRRRRARSSVCRKVAQAREKRFTFVLAVVMGVFVLCWFPFFFYSLSYLGICREACQLEPLFK
 FFFWIGYCNSLNPVIYTVFNQDFRRSFKHILFRRRRRGRFQ

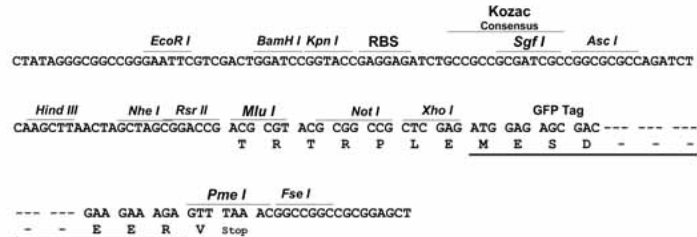
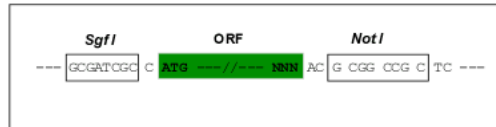
TRPLE - GFP Tag - V

Restriction Sites:

Sgfl-NotI

Cloning Scheme:

Cloning sites used for ORF Shutting:


ACCN: NM_007418

ORF Size: 1374 bp

OTI Disclaimer: The molecular sequence of this clone aligns with the gene accession number as a point of reference only. However, individual transcript sequences of the same gene can differ through naturally occurring variations (e.g. polymorphisms), each with its own valid existence. This clone is substantially in agreement with the reference, but a complete review of all prevailing variants is recommended prior to use. [More info](#)
OTI Annotation: This clone was engineered to express the complete ORF with an expression tag. Expression varies depending on the nature of the gene.

Components: The ORF clone is ion-exchange column purified and shipped in a 2D barcoded Matrix tube containing 10ug of transfection-ready, dried plasmid DNA (reconstitute with 100 ul of water).

Reconstitution Method:

1. Centrifuge at 5,000xg for 5min.
2. Carefully open the tube and add 100ul of sterile water to dissolve the DNA.
3. Close the tube and incubate for 10 minutes at room temperature.
4. Briefly vortex the tube and then do a quick spin (less than 5000xg) to concentrate the liquid at the bottom.
5. Store the suspended plasmid at -20°C. The DNA is stable for at least one year from date of shipping when stored at -20°C.

RefSeq: [NM_007418.3](#), [NP_031444.2](#)
RefSeq Size: 3214 bp

RefSeq ORF: 1377 bp

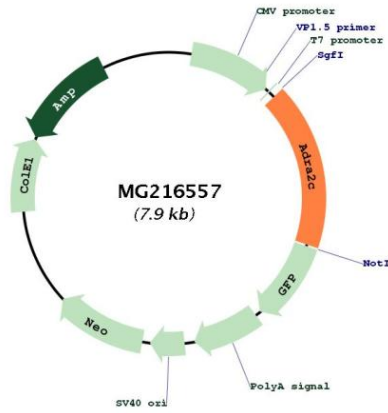
Locus ID: 11553

UniProt ID: [Q01337](#)
Cytogenetics: 5 18.09 cM

Gene Summary:

Alpha-2 adrenergic receptors mediate the catecholamine-induced inhibition of adenylate cyclase through the action of G proteins.[UniProtKB/Swiss-Prot Function]

Product images:



Circular map for MG216557