

Product datasheet for **MG216526**

Arap1 (NM_198096) Mouse Tagged ORF Clone

Product data:

Product Type:	Expression Plasmids
Product Name:	Arap1 (NM_198096) Mouse Tagged ORF Clone
Tag:	TurboGFP
Symbol:	Arap1
Synonyms:	2410002L19Rik; Centd2; mKIAA0782
Mammalian Cell Selection:	Neomycin
Vector:	pCMV6-AC-GFP (PS100010)
E. coli Selection:	Ampicillin (100 ug/mL)
ORF Nucleotide Sequence:	>MG216526 representing NM_198096 Red=Cloning site Blue=ORF Green=Tags(s)

TTTTGTAATACGACTCACTATAGGGCGGCCGGAATTCGTCGACTGGATCCGGTACCGAGGAGATCTGCC
GCC**CGATCGCC**

ATGGCAGAGGGTTACGATGCCGCACTGTCTGTAGCTGAGTGGCTGCGGGCACTTCACCTGGAGCAGTACA
CGGCACCTTTGAGCAGCACGGACTGGTGTGGCCACCGAGTGCCAAGGCCTCAGCGATGCTGGCCTGCT
GGACATGGGCATGCACCTCCCCGGCCACCGCCCGCATCCTGGTGGTCTTCACCGCGCCATGCACCC
CCGGTCCCTCGCTCGCCCCGCCACGGCCCGTCCGATGAAGCGACACATCTCCGTTCCACCACCTG
TGCCCGTCACTCCACCAGAGCCGCCCCACAGCTGGAGAGGATGAGGGTCTGCCTGCCGCTCCACCTAT
CCCACCCCGAGGAGCTGCCTCCACCTGCCTGCTTCACTCCGACATCCACAGCCGCCCCAGATCCTGTG
CTGCCCCACTGCCTGCCAAGAGACACTTGGTAGAATCCAGCGTTCTCCTGTCCCTCCTCGAACCCGGAC
CCCCCTACCCACAGGCCAGCCTTCTTGCTAAGGAGGAGTTACTGTGCCATCAGTGTACCCCGGTCCCA
ACCAGAGCCTGCAGAGACTCCGTCCACCCTCCTGCCTGCCTTTCCCAGGGGCCCTGCAGCCTCCGTCT
CCTCCTCCCTGTCTCCTGTGATCCCTCCCAAGCCTCCTGCCTGCTCCCTGAGTTTGACGACTCTGACT
ATGATGATGTCCCGGAGGAGGGCCAGGGGCCACGCCAGTGTGATGACCAAGGAGGAGCCCTGCCGAG
CCGAGTCCCACGGGCTGTGCGTGTGGCTAGTCTGCTGAGCGAGGGGGAGGAGCTGTCTGGGGATGATGCG
GAAGATGACGATGACCATGCCTATGAGGGTATCCCCAATGGTGGTGCCCAACGAGTGGCCTGAATCCAC
CCTTACGCAGCCTGATCCCTGATCTCCCACTGCACCCATGGATGAGTTGCCTGGGGTCCCACCCCAT
CACACCTGTCATCAAGGCTGGCTGGCTGGACAAGAACCACACAGGGTCTTATATCTATCAGAAGCGA
TGGGTGAGACTGGACGCTGATTACCTGCGATACTTTGACAGTAACAAGGACGCCTACTCTAAGCGTTTTG
TTCCTGTGGCCTGCATCTGCCGAGTAGCTCCTATTGGAGACCAGAAGTTTGAAGTATCACAATAATCG
GACCTTCGCTTCCGGCCAGAGAGTGTGTTGGAGCGAACGAGTGGATGCAGGCCCTGCAGCAGGCAGTA
GTTGAGCATCGAGCCGTTTTCCGCTTTCTAGTCTTCTGTGTTGGGAGTCCGAGGCTCCGAGCAGCCTG
ACCGTGTGGCAGCCTGGAGCTACGAGGCTTCAAGAATAAGCTTTACGTGGCTGTGACTGGGACAAAGT
ACAGCTCTATAAGAATCTGGAGGAATTCATCTGGGCATTGGTATCACCTTTATCGACATGAATGTGGC



[View online >](#)

AATGTCAAGGAAGTGGATCGGCGCAGCTTTGACCTCACTACCCCTACCGCATCTTCAGCTTCTCGGCTG
 ATTCAGAGTTAGAGAAGGAACAGTGGCTGGAGGCCATGCAGGGAGCCATCGCAGAGGCCCTATCTACCTC
 AGAGGTGGCTGAGCGCATCTGGGCCGACGCCCCAACAGGTTCTGTGCCGACTGTGGGGCCGCCAGCCT
 GACTGGGCCTCCATCAACCTCTGCGTTGTATCTGCAAGCGTGTGCAGGGGAGCACCGCGGCTGGGTG
 CAGGAGTGTCCAAGGTGCGGAGTTTGAAGATGGACAGGAAGGTGTGGACAGAAGCACTATCCAGCTCTT
 CTTACATCTGGGCAATGGCCCCGGGAACCACTTCTGGGCTGCTAATGTGCCTCCTAGTGAGGCCCTGGAG
 CCCAGCAGCAGCCCTGGTGCCCGCGGTATCACCTGGAGGCCAAGTACAGAGAGGGCAAGTACCCGCGCT
 ACCATCCGCTCTTTGGCAACCAAGAGGAACTGGACAAGGCCCTGTGTGCTGCAGTTACTACCACTGACCT
 GGCTGAGACCCAGGCACTCCTGGGCTGTGGGGCTGGGGTCAGCTGCTTCTCAGGGGACCCAGCAGCTCCC
 ACACCCCTGGCTCTTGCTGAGCAGGCCGGACAGACTCTGCAGATGGAGTTTCTACGGAATAATCAGAGTA
 CAGAGGTCCTCGTTGGACTCAGTGAAGCCCTTGGAAAAGCACTACTCCGTTACCCTGCCAACTGTGAG
 CCACAGCGGCTTCTGTACAAAAGTCTTCTGCCGGCAAACCTCTGCAGGACCGCCGTGCCCGGGAAGAG
 TTCAGCCGGCGTGGTGTCTGAGTGTGGGGTCTGAGCTACTATGAAAACGAACGGGCAGTGACAC
 CCAATGGGGAGATTCCGGCCAGCGAGATAGTATGCCTAGCAGTTTCCCCTCTGGACACCCATGGCTTTGA
 GCACACCTTTGAGGTGTACACAGAGGGAGAACGGCTGTACCTGTTTGGGCTGGAGAATGCAGAGCTGGCT
 CATGAGTGGGTCAAGTGCATTGCCAAGGCGTTCGTGCCTCCCCTGGCTGAGGACCTGCTAGCCCGGACT
 TTGAACGTCTTGGGCGCCTACCCTGTAAGCTGGCCTGAGCCTTACGACAGCTCAGGAAGGCTGGTTTGC
 CTTGACTGGCTCTGAGCTCCGGGCTGTCTTCCCAGAGGGGCCCTGGGAAGAGCCGCTGCAGCTCCGAAA
 CTGCAAGAGCTTTCTATCCAAGGAGACAGCGAGAACCAAGTGTGGTGTGGTGGAGCGGAGGAGGACAC
 TGTACATCCAGGGTGAGCGGCGGCTGGACTTTCATGGCTTGGCTAGGGGTTCATCCAGAAAGCAGCAGCCAG
 CTTGGGAGACACACTATCAGAACAACAGCTTGGGGACTCGGACATCCCAGTGATTGTGTACCGCTGTGTG
 GACTACATCACGCAGTGTGGCTTACCTCAGAGGGTATCTATCGAAAGTGTGGTTCAGACCTCCAAGACTC
 AGACTGTAGACAGCCTCCGGCAGGACGCAGCTCTGTGCACCTAAAGGAGGGAGAACAGCAGCTGGA
 CGACGTCTCCTCTGCACTCAAACGCTTCCCTCAGGGACCTGCCCGATGGGCTCTTACGCGTGCGCAGCGC
 CTGGCCTGGCTGGAGGCCTCTGAGATCGAGGATGAGGAAGAAAAGATCTCCAGGTATCGAGAGCTTTGG
 TGCATCTGCCCTGTCAACCGGCCACTGTGAAGGCCCTTATCAGCCATCTGTACTGTGTACAGTGCTT
 CTCAGACACAAACCAATGAACACACACAACCTGGCTATCGTGTTTGGGCTTACTCTTCCAGACAGAC
 GGGCAGGACTACAAGGCCGGCAAGGTGGTGAAGACCTCATCAACCACTACGTGGTGGTGTTCAGTGTGG
 ACGAGGAGGAGCTGAGGAAGCAGAGGGAGGAAGTACGGCCATCGTGAAGATGCGAGTGGCTGGCACTGC
 CAGTGGGACCCAGCATGCTGGCGACTTCATCTGCACAGTCTACCTGGAGGAGAAGAAGGTGGAGACTGAA
 CAGCATGTTAAGATCCCAGCATCCATGACTGCAGAGGAGCTTACTCTGGAGATTCTGGACCGCCGAATG
 TGAGCATCAGGGAGAAGGACTACTGGACTTGCTTTGAGGTCAACGAGAAGGAGGAGGCAGAGCGCCGCT
 GCACTTTGCAGAGAAGGTGCTGCCATTGTCCATGGGCTGGGCATAGACAGCCATCTGGTGGTGAAGAAG
 TACCAGTCCATGGAGGCCATGCTGTTGACTTGGCCAGCCGTGTGGGTGACACCAAGCATGGTATGATGA
 AGTTCCGTGAAGACCGCAGCCTCCTGGGCTTGGGGCTACCTTCGGGTGGCTTCCACGATCGCTACTTCAT
 TCTCAACAGCAGCTGCCTACGGCTCTACAAGGAGGTCCGGAGTACCAGCCCTGAGAAGGAGTGGCCTGTC
 AAGAGCCTCAAAGTCTACCTGGGTGTAAGAAGAAACTGCGGCCACTACTTGTGGGGCTTACCGGTGG
 TGCACGAGACAGAAAAGCAGAGAAGCAGCAGTGGTACCTCTGCTGTGACACGCAGATGGAACCTCGAGA
 GTGGTTTGGCACCTTCTCTCTGTGCAGCACGATGGCCTGGTGTGGCCCTCCGAGCCATCTCGAGTGTCC
 CGGGCAGTGCCTGAGGTCCGGATGGGCAGTGTATCGCTGATCCCTCTACGAGGCAGTGAAAATGAAATGC
 GCCGGAGTGTGGCAGCCTTCACTGCTGACCCCTTCCCTTCTCCGCCATGTC

AGCGGACCGACGCGTACGCGGCCGCTCGAG - GFP Tag - GTTTAA

Protein Sequence: >MG216526 representing NM_198096
 Red=Cloning site Green=Tags(s)

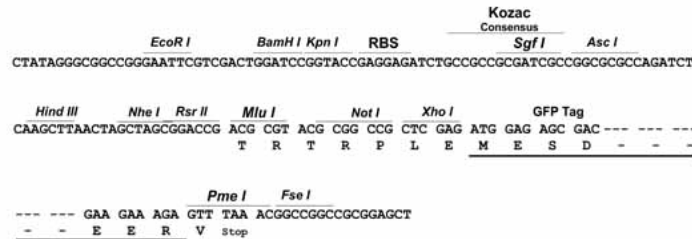
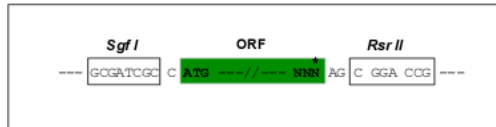
MAEGYDAALSVAEWLRALHLEQYALFEQHGLVWATECQGLSDAGLLDMGMHLPGHRRRILAGLHRAHAP
 PVPLPRPAPRPVPMKRHIFRSPVPVTPPEPPPTAGEDEGLPAAPPIPRRSCLPPACFTPTSTAAPDPV
 LPPLPAKRHLVSSVPPVPRTGPPYPQASLLAKEELLPSVSPRSQPEPAETPSTLLPAFPQGPLQPPS
 PPPCPPVIPPCKPRLLEPFDDSDYDDVPEEGGAPASVMTKEEPLSRVPRAVRVASLLSEGEELSGDDA
 EDDDDHAYEGIPNGGWPTSGLNPPLRSLIPDLPLHPMDELPGGTPITPVIKAGWLDKNPPQGSYIYQKR
 WVRLDADYLRYFDSNKDAYSKRFVPVACICRVAPIGDQKFEVITNNRTFAFRAESDVERNEWMQALQQAV
 VEHRARFRLSSASVLGVRGSEQPDRAGSLELRGFKNKLYVAVTGDKVQLYKNLEEFHLGIGITFIDMNVG
 NYKEVDRRSFDLTPYRIFSFADSELEKEQWLEAMQGAIAEALSTSEVAERIWAAPNRFACDCGAAQP
 DWASINLCVVICKRCAGEHRGLGAGVSKVRSKMDRQVWTEALIQFLHLGNGPGNHFWAANVPPSEALE
 PSSSPGARRYHLEAKYREGKYRRYHPLFGNQEELDKALCAAVTTDLAETQALLGCGAGVSCFSGDPAAP
 TPLALAEQAGQTLQMEFLRNNQSTEVPRLDSVKPLEKHYSVTLPTVSHSGFLYKTASAGKPLQDRRAREE
 FSRRWCVLSDGVLSSYENERAVTPNGEIRASEIVCLAVSPLDTHGFEHTFEVYTEGERLYLFGLENAELA
 HEWVKCIAKAFVPLAEDLLARDFERLGRLPCKAGLSLQQAQEGWFALTGSELRAVFPPEGWEEPLQLRK
 LQELSIQGDSENQVLVVERRRRLTIQGERLDFMAWLGVIQKAAASLGDTLSEQQLGSDIPVIYRVCY
 DYITQCGLTSEGIYRKCQTSKTRQLLDSLQDARSVHLKEGEQHVDDVSSALKRFLRDLDPGLFTRAQR
 LAWLEAIEDEEEKISRYRELLVHLPPVNRAIVKALISHLYCVQCFSDTNQMNTNHLAIVFGPTLFQTD
 GQDYKAGKVVEDLINHYVVVSVDEEELRKQREEVTAIVKMRVAGTASGTQHAGDFICTVYLEEKKVETE
 QHVKIPASMTAEELTLEILDRRNVSIREKDYWTCFEVNEKEEAERPLHFAEKVLPVHGLGIDSHLVVKK
 YQSMEAMLLYLASRVGDTKHGMMKFREDRSLGLGLPSGGFHDRYFILNSSCLRLYKEVRSRHEKEWPV
 KSLKVYLVGKKLRPPTCWGFTVVHETEKHEKQWYLCDDTQMELEWFAFLLSVQHDGLVWPSEPSRVS
 RAVPEVRMGVSVSLIPLRGENEMRRSVAaftADPLSLLRHV

SGPTRRRLE - GFP Tag - V

Restriction Sites: SgfI-RsrII

Cloning Scheme:

Cloning sites used for ORF Shutting:

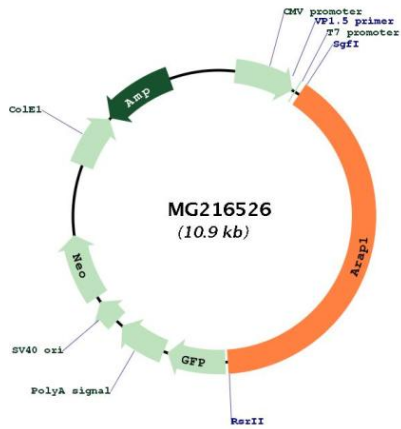


ACCN: NM_198096

ORF Size: 2181 bp

OTI Disclaimer:	The molecular sequence of this clone aligns with the gene accession number as a point of reference only. However, individual transcript sequences of the same gene can differ through naturally occurring variations (e.g. polymorphisms), each with its own valid existence. This clone is substantially in agreement with the reference, but a complete review of all prevailing variants is recommended prior to use. More info
OTI Annotation:	This clone was engineered to express the complete ORF with an expression tag. Expression varies depending on the nature of the gene.
Components:	The ORF clone is ion-exchange column purified and shipped in a 2D barcoded Matrix tube containing 10ug of transfection-ready, dried plasmid DNA (reconstitute with 100 ul of water).
Reconstitution Method:	<ol style="list-style-type: none"> 1. Centrifuge at 5,000xg for 5min. 2. Carefully open the tube and add 100ul of sterile water to dissolve the DNA. 3. Close the tube and incubate for 10 minutes at room temperature. 4. Briefly vortex the tube and then do a quick spin (less than 5000xg) to concentrate the liquid at the bottom. 5. Store the suspended plasmid at -20°C. The DNA is stable for at least one year from date of shipping when stored at -20°C.
RefSeq:	NM_198096.1 , NP_932764.1
RefSeq Size:	3673 bp
RefSeq ORF:	2184 bp
Locus ID:	69710
UniProt ID:	Q4LDD4
Cytogenetics:	7 E2
Gene Summary:	Phosphatidylinositol 3,4,5-trisphosphate-dependent GTPase-activating protein that modulates actin cytoskeleton remodeling by regulating ARF and RHO family members. Is activated by phosphatidylinositol 3,4,5-trisphosphate (PtdIns(3,4,5)P3) binding. Can be activated by phosphatidylinositol 3,4-bisphosphate (PtdIns(3,4,5)P2) binding, albeit with lower efficiency. Has a preference for ARF1 and ARF5 (By similarity).[UniProtKB/Swiss-Prot Function]

Product images:



Circular map for MG216526