

Product datasheet for **MG216524**

Cadm2 (NM_001145977) Mouse Tagged ORF Clone

Product data:

Product Type:	Expression Plasmids
Tag:	TurboGFP
Symbol:	Cadm2
Synonyms:	2900078E1IRik; 9330131D06; A830029E02Rik; Igdf4d; Igsf4d; NECL3; SyncAM 2; SyncAM2
Mammalian Cell Selection:	Neomycin
Vector:	pCMV6-AC-GFP (PS100010)
E. coli Selection:	Ampicillin (100 ug/mL)

ORF Nucleotide Sequence: >MG216524 representing NM_001145977
Red=Cloning site Blue=ORF Green=Tags(s)

TTTTGTAATACGACTACTATAGGGCGCCGGGAATTCGTCGACTGGATCCGGTACCGAGGAGATCTGCC
GCCGCGATCGCC

ATGATTTGAAACGCAGCGCGGTTCTCCGCTTCTACAGTGTCTGCGGGCTCCTGTTACAAGGCAGCCAAG
GGCAGTTTCCACTAACTCAGAATGTCACGGTTGTTGAAGGTGGAAGTGCATTTTGACCTGCAGAGTTGA
TCAAAATGATAACACCTCCCTCCAGTGGTCAAATCCAGCTCAACAGACTCTGTACTTCGATGACAAGAAA
GCTTTAAGGGACAATCGGATCGAGCTGGTTCGCGCTTCTTGGCATGAGTTGAGCATCAGTGTGAGTGTG
TGTCTCTCTCGGATGAAGGACAGTACACCTGCTCCTATTTACAATGCCTGTCAAACCTCCAAGGCCTA
TCTCACTGTCTGGGTGTTCCGGAGAAGCCTCAGATTAGTGGATTTTCGTCACCCGTGATGGAGGGAGAC
CTGATGCAGCTGACGTGTAAGACGTCGGCAGTAAGCCTGCGGCTGATATAAGATGGTTCAAAAATGACA
AAGAAATCAAAGATGTGAAGTACTTGAAGAGGAGGATGCTAACCGAAAAGACCTTACCCTTAGCAGCAC
GCTGGATTTCCGAGTGGACCGTAGCGATGATGGAGTGGCGGTGATCTGCAGAGTAGACCATGAGTCCCTC
AATGCCACCCCTCAGGTAGCCATGCAGGTGCTAGAAAATTCACTATACACCATCATGTTAAGATTATACCAT
CGACTCCTTTCCACAAGAAGGGCAGGCTTTAACGTTGACCTGTGAATCTAAAGGAAAACCACTGCCAGA
ACCTGTTTTGTGGACGAAAGATGGTGCCGAATTACCAGATCCTGATCGAATGGTTGTGAGTGGTAGGGAA
CTCAACATTCCTTCTGAACAAAACGGACAATGGCACTTACCGATGTGAAGCCACTAACACCAATTGGCC
AAAGCAGTGCAGATATGCTCCTCATTGTTACGATCCCAATTCCTGGCTGGCCAGAATGGCCCTGACCA
TGCTCTCATCGGAGGAATAGTGGCTGTTGTTGATTTGTTACTGTGCTCCATATTCTGCTTGGCCGA
TATCTGGCAAGACATAAAGAACATATCTAACAAATGAAGCTAAAGGAGCCGAAGATGCACCAGATGCC
ACACAGCCATTATCAATGCTGAAGGCAGCCAAGTCAATGCCGAAGAGAAAAAGAGTATTTTCATT

ACGCGTACGCGGCCGCTCGAG - GFP Tag - GTTTAA



Protein Sequence: >MG216524 representing NM_001145977
 Red=Cloning site Green=Tags(s)

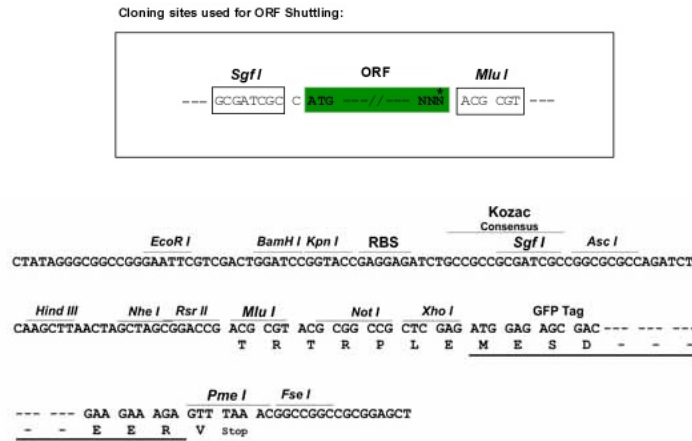
MIWKRSVAVLRFYSVCGLLQLQGSQGFPLTQNVTVVEGGTAILTCRVDQNDNTSLQWSNPAQQTLFYDDKK
 ALRDNRIELVRASWHELISVSDVSLSDEGQYTCSLFTMPVKTSKAYLTVLGVPEKPKQISGFSSPYMEGD
 LMQLTCKTSGSKPAADIRWFKNDKEIKDKVYLKEEDANRKTFTVSSSTLDFRVDSDGVAVICRVDHESL
 NATPQVAMQVLEIHYTPSVKIIPSTPFQEGQALTLTCEKSKPLPEPVLWTKDGAELPDPDRMVVSGRE
 LNILFLNKTDNGTYRCEATNTIGQSSAEYVLIVHDPNSLAGQNGPDHALIGGIVAVVVFVTLCSIFLLGR
 YLARHKGYLTNEAKGAEDAPDADTAIINAEGSQVNAEEKKEYFI

TRTRPLE - GFP Tag - V

Chromatograms: https://cdn.origene.com/chromatograms/ja1823_a09.zip

Restriction Sites: SgfI-MluI

Cloning Scheme:



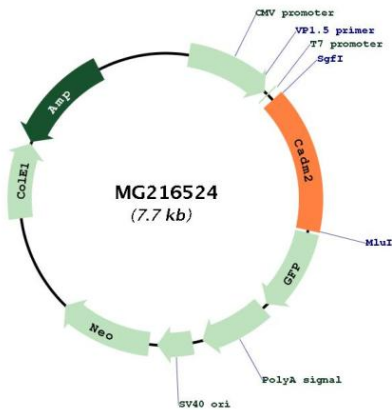
ACCN: NM_001145977

ORF Size: 1185 bp

OTI Disclaimer:	<p>Due to the inherent nature of this plasmid, standard methods to replicate additional amounts of DNA in E. coli are highly likely to result in mutations and/or rearrangements. Therefore, OriGene does not guarantee the capability to replicate this plasmid DNA. Additional amounts of DNA can be purchased from OriGene with batch-specific, full-sequence verification at a reduced cost. Please contact our customer care team at custsupport@origene.com or by calling 301.340.3188 option 3 for pricing and delivery.</p> <p>The molecular sequence of this clone aligns with the gene accession number as a point of reference only. However, individual transcript sequences of the same gene can differ through naturally occurring variations (e.g. polymorphisms), each with its own valid existence. This clone is substantially in agreement with the reference, but a complete review of all prevailing variants is recommended prior to use. More info</p>
OTI Annotation:	<p>This clone was engineered to express the complete ORF with an expression tag. Expression varies depending on the nature of the gene.</p>
Components:	<p>The ORF clone is ion-exchange column purified and shipped in a 2D barcoded Matrix tube containing 10ug of transfection-ready, dried plasmid DNA (reconstitute with 100 ul of water).</p>
Reconstitution Method:	<ol style="list-style-type: none">1. Centrifuge at 5,000xg for 5min.2. Carefully open the tube and add 100ul of sterile water to dissolve the DNA.3. Close the tube and incubate for 10 minutes at room temperature.4. Briefly vortex the tube and then do a quick spin (less than 5000xg) to concentrate the liquid at the bottom.5. Store the suspended plasmid at -20°C. The DNA is stable for at least one year from date of shipping when stored at -20°C.
Note:	<p>Plasmids are not sterile. For experiments where strict sterility is required, filtration with 0.22um filter is required.</p>
RefSeq:	<p>NM_001145977.1, NP_001139449.1</p>
RefSeq Size:	<p>9553 bp</p>
RefSeq ORF:	<p>1188 bp</p>
Locus ID:	<p>239857</p>
UniProt ID:	<p>Q8BLQ9</p>
Cytogenetics:	<p>16 C1.3- C2</p>

Gene Summary:

Adhesion molecule that engages in homo- and heterophilic interactions with the other nectin-like family members, leading to cell aggregation. Important for synapse organization, providing regulated trans-synaptic adhesion. Preferentially binds to oligodendrocytes (By similarity).[UniProtKB/Swiss-Prot Function]

Product images:

Circular map for MG216524