

Product datasheet for **MG216523**

Zfp827 (NM_178267) Mouse Tagged ORF Clone

Product data:

| | |
|----------------------------------|--------------------------------------|
| Product Type: | Expression Plasmids |
| Tag: | TurboGFP |
| Symbol: | Zfp827 |
| Synonyms: | 2810449M09Rik; D630040G17Rik; Znf827 |
| Mammalian Cell Selection: | Neomycin |
| Vector: | pCMV6-AC-GFP (PS100010) |
| E. coli Selection: | Ampicillin (100 ug/mL) |



ORF Nucleotide Sequence: >MG216523 representing NM_178267
Red=Cloning site Blue=ORF Green=Tags(s)

TTTTGTAATACGACTACTATAGGGCGCCGGGAATTCGTGACTGGATCCGGTACCGAGGAGATCTGCC
GCCGCGATCGCC

ATGCCAGGAGGAAGCAGGAGCAGCCCAAGCGCCTCCCTCACATGTTAGTAGGCAGGACGAGCGGAGG
GAGATTTACAGCAAGGAGAGCAGTGGTACGGAACTCCTCTGAGACTCCGTGAGAAGCGTCCATGGGGA
AGTCCAAGAGAACTATAAGCTGTCCCTGGAGGACCGGATCCAAGAGCAGTCCACATCCCCGACACCTCC
CTGGGCAGTGCCACACCAGCAGCCACACGCTGGAGTTGGTGGCACTTATGATGGTGGAGTTCTCCGAGACT
CGCTGCAGTGTCAAGGTCACTTTACCCGGAGTGTCTCTGTGTGCGATGATGACCCACCTAGTTCCAA
TAAACCTCTGAGCAGCAATTTGAGGCGGCTGCTGGAGGCCGGTCCCTCAAACCTCGATGGCAGGCAAT
GGCAGGGTGGAGTCTCCCGTGAATGTTGGCCCCAGTCTGTCAATTTCCCTCCGTCCACCATGCCAGC
AACTCAGTGTCTGGCCAGGAAGCTGGCGGAGAAGCAGGACCAGAGTGACCAATTCACCCCAAGTAACCG
TTTCATATGGAATCAAGGTAAGTGGTGGCCAACTCAACCACCTGTGGCTGTCCCTGACTCCGCC
ATCCTCAAACCTGAAAGCCGACGCAATGCTGTTCTGCAGGACAAATCTCTGTCCCGACTGAGGAGAGCC
TGAGGTTTGTAGTCTTTTCTCCCGTTCAGCTCGCAGTCTGCCAGCTCCACCTTGGCGGCCTTGTCTAA
GAAAGTGAGCGAGAGAAGTCTGACTCCGGTCCAGGAGCACCAGCTCCTGCCAGCTCTTCTGTGATTG
GCCTCCATGACCTCCTCCGACGCTGTGAAAGAAGTGGTGGCAGGGCCGGGTAGCCTTCTGGCTG
AGAAGTCATCTTTATTGCCTGATGACCTCTACCACTGCCGTCTTCTGAGAAGAAGCCAGAAAAAGTCA
CCCGCCCCCTCCCCACCTCCTCCGACAGCGCAGCCGCTCAGTCTTGAATTTATTGCTACTTCCAGTT
TCCAAGGGAAGAGCCTCCAAGCCCTCAATTCAGCCCCAGAAGAAGAAAGCGGGAAGCCATTCCAATGTC
CAATATGTGGTTTGGTTATAAAAAGGAAGAGTTACTGGAAGCGGCACATGGTATTACACGGGCTTAA
GAGTCATCAGTGTCCACTCTGTCCATTCCGGTGTGCTCGCAAGGACAATCTCAAATCCACATGAAGTT
CATCAGCATCAGGACCCGGGAGAGACTTTTCAGTGCCAGCTGTGCCCTTTCACATCCTCACGCCACTTCA
GCCTGAAACTGCACATGCGTTGCCATCAGCACTCCTGAGGACAGAGGCCAAGGTGAAGGAGGAGATCCC
AGACCCAGATGTCAAGGATCTCCCCACCTCAGTGACAGTGGCTGCCTGGGCGAGCAGAGGGAAGGAGGA
GGGACAGAGCTAGTGGGGACCGTGTGACGTCTAACACGCCAGAGAGGACTGGCCAGGGTGGGGCTGGCG
TTGCACCTTTGCTGGTGAAGGAGGAGCCCAAGGAAGATAACGCCTGCCACCTCCTTTACCTTGAATGC
TGCCGACAGGCCGCCAACACACAAAGCTGAAAGACCCCTCCGAGTATGTGTCCAACAGTGCAGCAGTA
TTGTTACGCCAGGACATCTCGTTAAGATGGCTCCGATTTTCTCATGAAGCTGCAGCTGCAAACCCAGA
AGGAGCCTATGAATCTTAATTTAAAGTGAAGGAGGAGCCCAAGGAAGGAGTCCCTGAGCATGCCTTT
GCCTCGCTCCAGCTACGTGTTTCAGCCCGGAACCGAAGTGTCTACCCCAAGCGTCTCCGAGGACCCACT
ACACCCAGGAAGGCAAGGGGAGTGTGTTAAGCGGGACATGTCCGCCAAGGCTGCCTCAGAACTTCTCA
TGAAACTCTCAGCGAAAGCTACAAGGAGACCGAGCGGTGACGGTTAAGAAGAACCATGGAGGTGGA
CATCCAGGACTCCCAGCTCCATATCACCCAGCCGGAACATTGGCTACAGCACTTTAATGGGGCGAGAG
AAAAGTGAACCTTACAGAAGCTGCCAGAAGTTCGAGTTCCCCAGAGAGAAATCTCTTACGCCAGGACA
TCTCTGTGAAGATGGTCTGAGTGTCTTTTCAGCTCTCGAAAAAGTGAAGCAAGAACACAATCACAC
GAAAGAAAACGCAATGCGGACAACCACAGCCCTTTCTTTTCAGAAGACACATTTAGACAATCACCATT
ACCTCCAATTCAAAAGATCTGCTGCCTGGTGAATCTGTGCTGCACGGAAGAGTGTCTGCTCCAGAGACC
AGAAGATTGCTTTCAGGACAGGAAACGGACTGCCATCCTGGAATTCATGACCAGCTCTTCCCTTGCGA
TGTGTGTGGAAAGTGTTCGGACGACAGCAGACATGTCTGCACACCTCTCATTGCACACAGAGGAAAGA
AAATACAAATGCCACTTGTGCCCTATGCTGCTAAGTCCGTGCGAACCTGAACCAGCATCTGACCGTGC
ACTCTGTGAAGCTCGTGAGTACCGACACCGAGGACATAGTCAAGTGTCACTTCTGAGGGCAGTATGG
GAAGAAACACCCGTATTACTACAGTTGCCAGTGTGTGATTTGAGACGGAGCTCAATGTTCAAGTTGTA
AGCCACATGTCTCTCCATGTGGACAAGGAACAGTGGATGTTTTCCATCTGCTGCACGGCCTGCGACTTTG
TCACCATGGAGGAAGCAGAGATAAAGACTCACATTGGCACCAAGCACACAGGGGATGATAGGAAGACCC
CAGTGAATCGAACAGCCCTCTTATCCTCCCTGCAACTCTGAGTGATTGAGCCAATGGCAAGATGAC
TCAGACAGCTCCCAGAAAAACAAGGGCGGGAACAATTGCTGGTCACTCTGTGGTGGCCGGGAGCCAGC
CCTCACTGAACAACGAGGAAAAAGCCAGAGAAAGGGTTCGAATGCGTTTTTTGCAACTTTGTCTGCAAGAC
GAAGAATATGTTTGAAGCCATCTGCAAAATCCACCTCATCACCCGATGTTTGAAGTGTGATGTGCCAC
AAGTTTCAAGAACTCCCGAACAGTGTGGAGCACAAGAAATGCCACACTGTCCCCACCGTGGGCTCA
ACTCAGGACAGTGG

ACGCGTACGCGGCCGCTCGAG - GFP Tag - GTTTAA

Protein Sequence:

>MG216523 representing NM_178267
 Red=Cloning site Green=Tags(s)

MPRRKQE QPKRLPSHVS RQDEAE GDFSEGEQWYGNSS ETPSEASYGEVQENYKLSLEDRIQE QSTSPDTS
 LGSATPSSHTLEL VALDGEVLRDSLQCQGHLS PGVSSVCDDPPSSNKPLSSNLRRLL EAGSLKLDGTAN
 GRVESPVNVGPSL SFSPSSHAAQQLSVLARKLA EKQDQSDQF TPSNRFIWNQ GKWLPNSTTT CGLSPDSA
 ILKLAANA VLDKSLSRTEESLRFESFSSPFSSQSASSTLAALSKKVSERSLTPGQEHPPASSFLSL
 ASMTSSAALLKEVAARAAGSLLAEKSSLLPDDPLPLPSEKKPEKVT P P P P P P P P T A Q P P Q S L E L L L L P V
 SKGRASKPSNSAPEEESGKPFQCPICGLVIKRKSYWKRHMVIHTGLKSHQCPLCPFRCAKDNLKS HMKV
 HQHQDRGETFQCQLCPFTSSRHFSLKLHMRCHQHFLRTEAKVKEEIPDPDVKGS PHLSDSGCLGQQREGG
 GTELVGTVMTSNTPERTGQGGAGVAPLLVKEEPEDNGLPTSF TLNAADRPANHTKLKDPSEYVSNAAV
 LFSQDISVKMASDFLMKLSAANQKEPMNLFKVKKEEPKEEESL SMPLPRSSYVFSPEPEVSTPSVSDPL
 TPQEGKGSVLRDMSAKAASELLMKLSAESYKETQAVTVKEEPMEVDIQDSPASISPSRNIGYSTLMGRE
 KTEPLQKLEGRVPPERNLFSQDISVKMASELLFQLSEKVSKEHNHTKENAMRTTSPFFSEDTFRQSPF
 TNSKDLLPGESVLHGRVSAPETEKIVLEAGNGLPSWKFNQDLFPCDVCGKVFGRQQTLSRHLSLHTEER
 KYKCHLCPYAAKCRANLNQHLTVHSVKLVSTDTEDIVSAVTSEGS DGKHPYYSCHVCGFETELNVQFV
 SHMSLHVDKEQWMFSICCTACDFVTMEEAEIKTHIGTKHTGDDRKTPSESNSSPSSSLSTLSDSANGKDD
 SDSSQKNKGGNLLVIVVPGSQPSLNNEEKPEKGFECVFCNFVCKTKNMFERHLQIHLITRMFECVDVCH
 KFMKTPEQLLEHKKCHTVPTGGLNSGQW

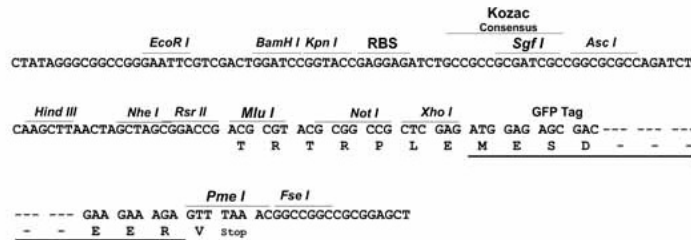
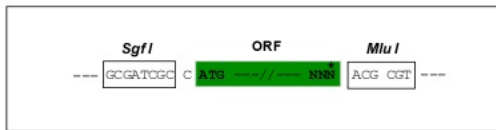
TRTRPLE - GFP Tag - V

Restriction Sites:

SgfI-MluI

Cloning Scheme:

Cloning sites used for ORF Shutting:



ACCN:

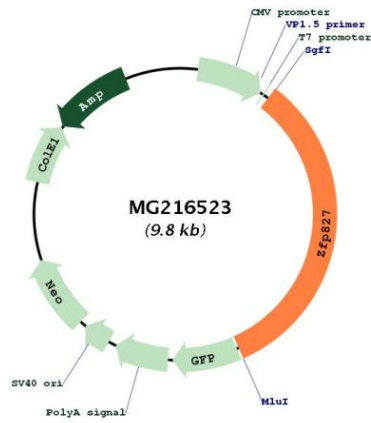
NM_178267

ORF Size:

3234 bp

| | |
|-------------------------------|---|
| OTI Disclaimer: | The molecular sequence of this clone aligns with the gene accession number as a point of reference only. However, individual transcript sequences of the same gene can differ through naturally occurring variations (e.g. polymorphisms), each with its own valid existence. This clone is substantially in agreement with the reference, but a complete review of all prevailing variants is recommended prior to use. More info |
| OTI Annotation: | This clone was engineered to express the complete ORF with an expression tag. Expression varies depending on the nature of the gene. |
| Components: | The ORF clone is ion-exchange column purified and shipped in a 2D barcoded Matrix tube containing 10ug of transfection-ready, dried plasmid DNA (reconstitute with 100 ul of water). |
| Reconstitution Method: | <ol style="list-style-type: none">1. Centrifuge at 5,000xg for 5min.2. Carefully open the tube and add 100ul of sterile water to dissolve the DNA.3. Close the tube and incubate for 10 minutes at room temperature.4. Briefly vortex the tube and then do a quick spin (less than 5000xg) to concentrate the liquid at the bottom.5. Store the suspended plasmid at -20°C. The DNA is stable for at least one year from date of shipping when stored at -20°C. |
| Note: | Plasmids are not sterile. For experiments where strict sterility is required, filtration with 0.22um filter is required. |
| RefSeq: | NM_178267.3 , NP_839998.2 |
| RefSeq Size: | 7625 bp |
| RefSeq ORF: | 3237 bp |
| Locus ID: | 622675 |
| UniProt ID: | Q505G8 |
| Cytogenetics: | 8 C1 |
| Gene Summary: | May be involved in transcriptional regulation.[UniProtKB/Swiss-Prot Function] |

Product images:



Circular map for MG216523