

Product datasheet for **MG216509**

Shroom2 (NM_172441) Mouse Tagged ORF Clone

Product data:

Product Type:	Expression Plasmids
Product Name:	Shroom2 (NM_172441) Mouse Tagged ORF Clone
Tag:	TurboGFP
Symbol:	Shroom2
Synonyms:	4832440C16; Apxl; C630003H05Rik; Shrm2
Mammalian Cell Selection:	Neomycin
Vector:	pCMV6-AC-GFP (PS100010)
E. coli Selection:	Ampicillin (100 ug/mL)
ORF Nucleotide Sequence:	>MG216509 representing NM_172441 Red=Cloning site Blue=ORF Green=Tags(s)

TTTTGTAATACGACTCACTATAGGGCGGCCGGAATTCGTCGACTGGATCCGGTACCGAGGAGATCTGCC
GCC**CGATCGCC**

ATGGAGGGCGCCGAGCCCGTGCACGGCCGAGCGCCTGGCCGAAGCTGAGGCGCCGGCGACCGACGGCG
TCCGCCTGGTGGAGGTGCAGCTGAGCGGGCGGCCCTTGGGGCTTACCTTGAAGGGCGCCGCGAGCA
TGGCGAGCCTCTGGTCATACCAAGATTGAAGAAGGAAGCAAAGCTGCAGCAGTGGACAAGCTACTTGT
GGAGATGAGATAGTGGCCATTAATGATGTGAGTCTCTCAGGGTTCAGACAAGAAGCAATTTGCCTGGTGA
AAGGCTCCACAAGACCCTGAAGCTTGTGGTCAAAGGAAAAGTATCCAAGTTGGAGGCCCACTCCTG
GCACGCTACCAAGTACTTTGATGTCACCCCTGAGCCAGCAGCCTCACTGTTTCTGAACACCAGCGGTTC
CCTTCTGGAAGAGCCAGCACCAGGCTAGTTCTTCTCTCATGATTTATCTGGCTCATGGGAGCATACAA
GCCTACAGCGCACTTCTGACCACTTCAGCTCCATGGGCAGCATAGACAGCCTCGACCACAGCTCCCAACT
CTACCCATCTGGACACCTCTCATCTGCCAAGTCCAATAGCAGCATTGACCACCTGGGAGGCCACAGCAAG
CGAGACTCAGCTTACGGCTCCTTTCCACATGCTCCAGCACCCCTGACCACCTTGCCAAAGGCTGATG
CCTTCTCACTGAGAATTTCTATAAAGTTGGCCTTTGGGAGGCCCTCAGACCAGGCAGCAGCCGACA
AAGCCAGTCTACAGGTGATCCTCAGGACTGCAGGACAGGCCATCATGTTTCATACTAGGGTTCCTGGT
AACAGTAGTAAAAGTCCAAGGCCGAGGATAATGTTGAACCCAAAATAGCCACTCATGGGAGATCCCAAT
TTGGGCCTGTGGTATGTTCTTGACAAGAAAAAGCCCTTCTCCCCACCTCTTGACTTCTTTGCG
CAGTGATAGCTTTTCTGTGGCAGCCAGGGCCATGAAAAAGCCCGGGCCCTCCATTCTCAGACTTGGCC
AGTATGCAGCACTTTATCACCCCTGCCCCATGTGCAACCCCGGGGGACCATAGAATGAAACTACAGATC
GTCAGTGGAAAGCTCACACACCTAAGCAGTGGAAAAGAAATAGGAAATGTGGGTTACCAGTCAGAAGGCCA
CCTGGATTGCCGTTGGCTATGCTCTGATGATAGAGCAGGTAGGCCCTCAGGGCCTCCGGCAGGCTCCAG
TTCTCCGATGTGCACTTTCTGAAGTCTTACCACGGGAGCCAGCACCAACAGCAGTGCAGTGACGAGAGCC
CAAGGGCCCCCTCATACCAAGGGAAGTCTTCAATAACTCCTGGTGGCGGTCTGCAAGAGCCTCTGA
ACCATCTCAGGATGACAACCTACTCAGGTGAGGTGGCCTGGTCTGCTCACCAGAAGCTAGATGACAGA



[View online >](#)

Protein Sequence: >MG216509 representing NM_172441
 Red=Cloning site Green=Tags(s)

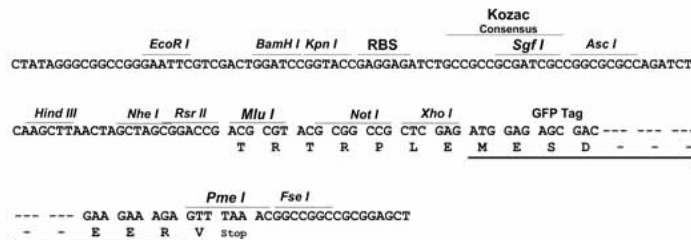
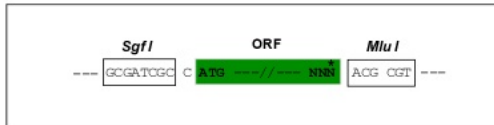
```
MEGAEPRARPERLAEAEAPATDGVRLVEVQLSGGAPWGF TLKGGREHGEPLVITKIEEGSKAAAVDKLLA
GDEIIVAINDVSLSGFRQEAIKLVKGSHTLKL VVKRKS DPSWRPHSWHATKYFDVHPEPAASLFLNTSGS
PSWKSQHQASSSSHDLSGSWEHTSLQRTSDHFSMGSIDSLDHSSQLYPSGHLSSAKSNSSIDHLGGHKS
RDSAYGSFSTCSSTPDHTLPKADASSTENILYK VGLWEASRPGSSRQSQTGDPQGLQDRPSCFIPRVPG
NSSKSPRPEDNVEPKIATHGRSNFGPVVYVPDKK KAPSPPLGLPLRSDSF SVAARGHEKARGPPFSDLA
SMQHFITLPHVQPRGDHRMETTD RQWKLTHLSSGKEIGNVGYQSEGHLDCRWLCSDDRAGRPSGPPGRLQ
FSDVHFLKSYHGSQHQQCSDSPRAPSSPRELLHITPGGGLQEPPEPSQDDNPTQVRWPGSAHQKLDLDR
GRSHYFPGSLRQPVQGSQVVI PRGDYWHSDTTPVDLEYP LRLPVGQRTYLQQHEETPASHEKEGYHQLN
AGIEGCCSGIQEPPRASRTVRTGLQCPSNDFKLV DGESGRISRQRTPMLHSLTQDGTWRPGNSKDCGNDK
PPLFDAQV GKPTRRSDFATTLRNEIQMRRAKLQKSKSTV TLAGDSEAE DCAGDWRADVGAVPEGSFPST
YKEHLKEAQTRVLKATSFQRRDLPTPADQYSGPSEHRTFDHSASSLS SFPGEPSAPRF CETGLAKAP
SSGVGVPHVLRIGGRKRFTA EQKLKSYSEPEKINEVGLSGDHRPHPTVRTPEDTVGTFADRWKFF EETS
SKLLQKAGHRQVHCGLPREKAERPQTGHHECESTEPWFQKRSLATSCGEILSDRKVEKASEKLNPPRRLGT
FAEYQASWKEQKPLEARSSGRYHSADDILDAGLDQQQRPQYIHERSRSSPSTDHYSQEVPEPNRQAE
SGDHKEAILCTLQAEEGCSAPSSSVLSSAQPD SQHVNEDTTFPQPETQLSSKCQHLQTSAMETSRSPSP
QFAPQKLTDKPPLL IHEDNSARIERVMDNNTTKMVP I KIVHSESQPEKESRQSLACPAELPPLPSGLER
DQIKTLTSTSEQCYSRFCVYTRQVEVEAPHRARPEPRPPSTPAPPVRDSCSSP SLYNGKAKEKTMDDLKS
EELAREIVGKDKSLADILDPSVKIKTTMDLMEGIFPKDEYLL EEAQRRKLLPKVPLPRVTEDEKQDPGM
PGVVSLATNSTYYSTSAPKAELLIKMKDLQEPEEYSAGDL DHDLSVKKQELIDSI SRKLQVLRAREASLL
EDIQANNALGDEVEAIVKDVCKPNEFDKFRMFI GDLDKVNNLLLSL SGRLARVENALNLDNPNSPGDRQ
SLLLEKQRYLTQQHEDAKELKENLDRRERIVFDILATY LSEENLADYEHFVKMSALIEEQRELEDKIHLG
EEQLKCLFDSLQPERSK
```

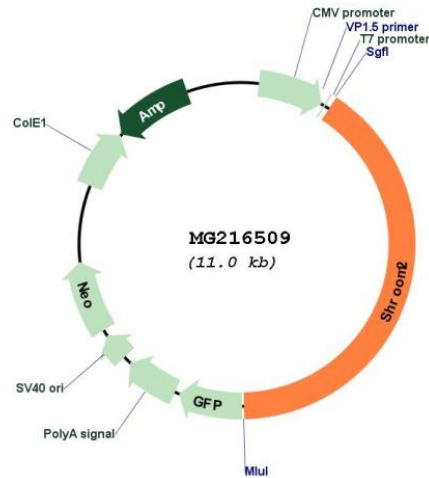
TRTRPLE - GFP Tag - V

Restriction Sites: SgfI-MluI

Cloning Scheme:

Cloning sites used for ORF Shutting:



Plasmid Map:


ACCN: NM_172441

ORF Size: 4461 bp

OTI Disclaimer: The molecular sequence of this clone aligns with the gene accession number as a point of reference only. However, individual transcript sequences of the same gene can differ through naturally occurring variations (e.g. polymorphisms), each with its own valid existence. This clone is substantially in agreement with the reference, but a complete review of all prevailing variants is recommended prior to use. [More info](#)

OTI Annotation: This clone was engineered to express the complete ORF with an expression tag. Expression varies depending on the nature of the gene.

Components: The ORF clone is ion-exchange column purified and shipped in a 2D barcoded Matrix tube containing 10ug of transfection-ready, dried plasmid DNA (reconstitute with 100 ul of water).

Reconstitution Method:

1. Centrifuge at 5,000xg for 5min.
2. Carefully open the tube and add 100ul of sterile water to dissolve the DNA.
3. Close the tube and incubate for 10 minutes at room temperature.
4. Briefly vortex the tube and then do a quick spin (less than 5000xg) to concentrate the liquid at the bottom.
5. Store the suspended plasmid at -20°C. The DNA is stable for at least one year from date of shipping when stored at -20°C.

RefSeq: [NM_172441.3](#), [NP_766029.2](#)

RefSeq Size: 7494 bp

RefSeq ORF: 4464 bp

Locus ID: 110380

UniProt ID: [A2ALU4](#)

Cytogenetics: X 68.46 cM

Gene Summary: May be involved in endothelial cell morphology changes during cell spreading. In the retinal pigment epithelium, may regulate the biogenesis of melanosomes and promote their association with the apical cell surface by inducing gamma-tubulin redistribution.
[UniProtKB/Swiss-Prot Function]